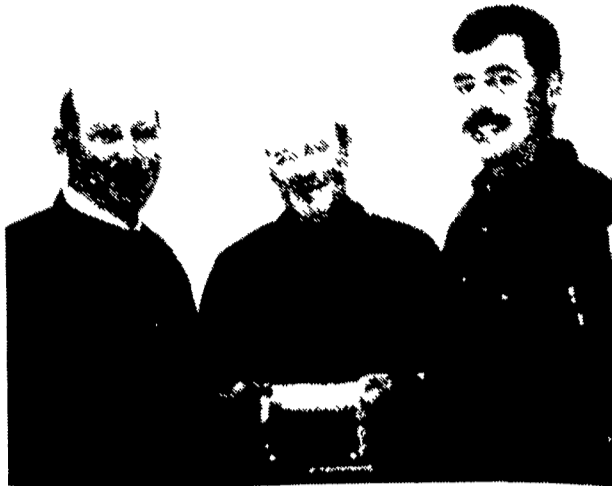


# Cumberland County DHIA Presents Production Awards

HUNTSDALE (Cumberland Co.) — The Cumberland County Dairy Herd Improvement Association recently held its 80th Annual Meeting at the Penn Township Fire-hall. The following were award recipients at the meeting.



Nealand Farm's cow #189 in Newville was awarded the high milk production award, producing 36,266 lbs. during her last lactation. Oscar and Thomas Nealy of Nealand Farm received the award.



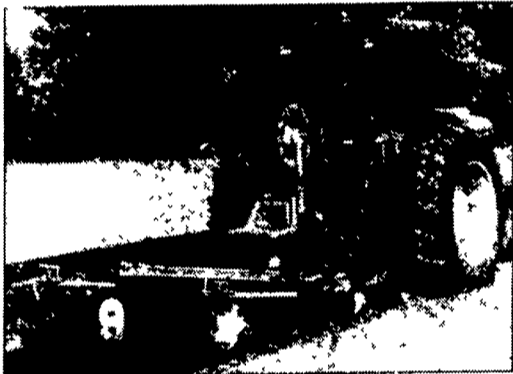
David Walton of Carlisle was awarded first place in the Cumberland County Herd Management Awards, scoring 101 points. The award was given to herds that excel in several herd management areas. Shane Henry, DHI technician (RIGHT) presented the award to Walton.



Brymesser Farm represented by Michael and Sheldon Brymesser received three awards from David Walton, county president. Their Bry-Nell Joy Bell, was awarded for high protein production with 1081 lbs. Bry-Nell Joe Charo was the high 2-yr-old in protein production with 938 lbs., while Bry-Nell Peti Bara was honored as the high 2-yr-old in milk production with 30,712 lbs.

## 10% Year End Sale

*Irrigation And Plastic Mulch Equipment*



Manufacturers of Bed Shapers  
Raised Bed Mulch Layers • Mulch Lifters  
Water Wheel Transplanters  
Also full line of drip irrigation systems  
from garden to large acreage.  
Pumps, Overhead Irrigation and much more.  
Free Catalogue



**Rain-Flo Irrigation**  
884 Center Church Road  
East Earl, PA 17519  
**(717) 445-6976**



**We are starting a weekly mail market report.**

Topics covered will be grains, feed ingredients, fertilizer, weather, export markets, livestock and more.

We will concentrate on local markets.

E-mail us at [marketinfo@pacmainc.com](mailto:marketinfo@pacmainc.com) or call 1-800-722-6246.

We will be sending back a short questionnaire.



Jean & Ray Thursh, owners of Jet-Rae Farm in Shippenburg, received the lowest Somatic Cell Count award from Walton (FAR LEFT). Dave and Doug Lehman in Carlisle received 2nd place, while Mark Naugle of Carlisle, Al-Hart Holsteins of Shippenburg, and Gordon Holl of Newville round out the top five.

# HOLIDAY COORINOS



May the magic of Christmas fill your souls with wonderful things! Our thanks to one and all!

**RYDER SUPPLY CO.**

539 Falling Spring Road  
P.O. Box 219  
Chambersburg, PA 17201-0219  
Phone 717-263-9111

Process Silage With Your Harvester

**SAVE 10%** **GET MORE MILK FROM LESS FEED!**

Our kernel processors effectively increase milk production by making more nutrients available to your cows.

**Limited Number of Units Available For**

- John Deere 3950 & 3970 pull type
- John Deere 5000 series self propelled



**Replacement Crimper Rolls for SP JD Series.**  
Special 'til 1/31/00 - \$1,000 ea. In Stock. Will Ship

**Silage Roller Mill**  
Process chopped silage from your silo to a feed cart



**Now Available: Processing Unit for Kelly Ryan Centerline Silage Bagger.** Process your corn silage and run the bagger with one tractor. See it on display at the **KEYSTONE FARM SHOW.**

**After Season Discount**

**Lancaster Silage Crimper**  
2008 Harvester Rd • East Earl, PA 17601  
• 717-291-3721