

Estimated Daily Livestock Slaughter

Under Federal Inspection

	Dec. 21	CATTLE	CALVES	HOGS	SHEEP
WEDNESDAY 12/21/99 (EST)	127,000	4,000	392,000	18,000	
WEEK AGO (EST)	130,000	5,000	389,000	17,000	
YEAR AGO (ACT)	124,000	7,000	381,000	16,000	
WEEK TO DATE (EST)	251,000	9,000	789,000	33,000	
SAME PD LT WK (EST)	243,000	10,000	780,000	34,000	
SAME PD LT YR (EST)	249,000	12,000	768,000	33,000	

Middleburg Livestock

Graded Feeder Cattle Sale

Middleburg, Pa.

December 21, 1999

Report Supplied by PDA

CATTLE: 457...(PDA)...COMPARED WITH LAST WEEK'S SALE...SL. STEERS .75-1.00 LOWER, SL. COWS MOSTLY STEADY.

SLAUGHTER STEERS: FEW HIGH CHOICE AND PRIME 2-4 1210-1365 LBS. 72.25-73.25, CHOICE 1100-1440 LBS. 64.75-71.25, SELECT 1-3 59.25-66.75, STANDARD 1-2 48.00-58.50.

HOLSTEINS: FEW HIGH CHOICE AND PRIME 2-3 1355-1505 LBS. 64.25-65.50, CHOICE 2-3 1100-1575 LBS. 56.25-59.75, SELECT 1-2 49.25-55.25, FEW STANDARD 1-2 47.00-48.50.

HEIFERS: CHOICE 2-4 1000-1320 LBS. 64.50-70.25, SELECT 1-3 58.50-65.50, STANDARD 1-2 45.50-57.00.

COWS: BREAKERS 75-80% LEAN 38.75-43.75, FEW LOW DRESSING DOWN TO 36.50, BONERS 80-85% LEAN 35.75-40.75, LOW DRESSING 33.00-35.00, LEAN 85-90% LEAN 25.50-36.00. SHELLS DOWN TO 20.00.

BULLOCKS: SELECT 1-3 44.00-56.75. BULLS: FEW YG#1 1220-1750 LBS. 42.25-44.00, FEW YG#2 1100-1580 LBS. 35.50-41.25.

FEEDER CATTLE: STEERS MED. AND LARGE 1 300-375 LBS. 72.00-81.00, 450-595 LBS. 62.00-77.00, 650-750 LBS. 66.00-76.00, MED. AND LARGE 2 400-500 LBS. 52.00-54.00, 700-965 LBS. 47.00-56.00; HEIFERS LARGE 2 380-555 LB. HOLSTEINS 82.00-100.00, MED. AND LARGE 1 340-550 LBS. 60.00-69.00, 420-500 LBS. 54.00-57.00, 650-700 LBS. 43.50-52.00, 725-850 LBS. 40.00-43.50; BULLS MED.

AND LARGE 1 500-600 LBS. 58.50-65.00, 695-800 LBS. 52.00-55.00, MEDIUM AND LARGE 2 270-485 LBS. 49.00-66.00.

CALVES: 237...VEALERS STANDARD AND GOOD 75-95 LBS. 20.00-30.00, UTILITY 55-80 LBS. 10.00-20.00.

FARM CALVES: HOLSTEIN BULLS STEADY...#1 HOLSTEIN BULLS 90-130 LBS. 117.00-162.00, 80-90 LBS. 90.00-105.00, #2 80-125 LBS. 65.00-127.00 WITH A FEW DOWN TO 40.00; #1 HOLSTEIN HEIFERS 85-105 LBS. 265.00-335.00, #2 70-125 LBS. 110.00-230.00.

HOGS: 164...12/20 AND 21. BULK OF SUPPLY SOLD ON MON. AND REPORTED BY THE AUCTION.

BARROWS AND GILTS: 49-54% LEAN 230-275 LBS. 38.50-40.00, FEW TO 41.00, 45-50% LEAN 34.50-37.50, 40-45% LEAN 290-325 LBS. 23.00-35.50.

SOWS: US#1-3 310-495 LBS. 23.00-35.50, 500-630 LBS. 27.00-32.50.

BOARS: 460-780 LBS. 5.00-7.50.

FEEDER PIGS: 49...US#1-3 35-50 LBS. 29.00-33.00 PER HEAD.

SHEEP: 9...SLAUGHTER LAMBS FEW CHOICE 80-95 LBS. 84.00-91.00, 120-125 LBS. 67.00-76.00.

NEW CROP LAMBS ONE CHOICE 40 LBS. 130.00. SLAUGHTER SHEEP: ONE 29.00. GOATS: 9...FEW LARGE BILLIES 90.00-107.00, ONE LARGE NANNY 62.50, LARGE KIDS 48.00-62.00 PER HEAD.

Carlisle Livestock

Carlisle, Pa.

December 21, 1999

Report Supplied by Auction

SLAUGHTER CATTLE: STEERS CHOICE 66.00-70.00; SELECT AND LOW CHOICE 61.00-65.75.

HEIFERS: CHOICE 65.50-69.50; SELECT AND LOW CHOICE 61.50-65.00.

COWS: STRONG DEMAND! BREAKERS 39.25-43.75; BONERS 36.00-41.00; LEAN 33.00-38.75; COUPLE LOW DRESSING LIGHTS DOWN TO 26.00; SHELLY 28.00 AND DOWN.

FEEDER CATTLE: STEERS, HOLSTEINS/DAIRY TYPES 400-850 LBS. 50.00-69.00; HEIFERS, HOLSTEINS/DAIRY TYPES 400-750 LBS. 59.00-73.00; BULLS, DAIRY TYPES 600-850 LBS. 40.50-43.00; CALVES RETURNING TO THE FARM, STRONG DEMAND! HOLSTEIN BULLS #1 95-130 LBS. 140.00-160.00; HOLSTEIN BULLS #2 90-130 LBS. 112.50-127.50; HOLSTEIN HEIFERS #1 90-100 LBS. 250.00-280.00.

SWINE: HOGS US#1-3 220-270 LBS. 36.00-37.00, 300-360 LBS. 27.75-32.00; BOARS OVER 400 LBS. 4.00-6.00; SOWS US#1-3 350-785 LBS. 27.00-32.00; FEEDER PIGS BY THE HEAD, ACTIVE! 16-25 LBS. 25.00-35.00, 27-32 LBS. 29.00-36.00.

GOATS: BY THE HEAD, MEDIUM AND LARGE NANNIES AND BILLIES 63.00-86.00; FANCY KIDS 50.00-65.00; FLESHY KIDS 35.00-49.00; SMALL/THIN KIDS 7.00-34.00.

LAMBS: GOOD AND CHOICE 55-80 LBS. 87.50-125.00; GOOD AND CHOICE 80-140 LBS. 78.00-90.00.

SHEEP: ALL WEIGHTS 29.00-72.00.

SALE EVERY TUES. 5 P.M. FOR RABBITS, POULTRY AND EGGS; 6:30 P.M. FOR LIVESTOCK, STARTING WITH CALVES; SPECIAL FED CATTLE SALE TUES., DEC. 28; STATE GRADED FEEDER PIG SALES FRI, JAN. 14; SPECIAL FEEDER CATTLE SALE TUES., DEC. 28. PEN LOTS OF CATTLE SOLD IN ORDER RECEIVED. EARLYBIRD PENS CLOSE TUES. 2 P.M.

Mercer Livestock

Mercer, Pa.

Tuesday, December 21, 1999

Report Supplied by PDA

CATTLE: 364 HEAD...(PDA)...COMPARED WITH LAST WEEK'S SALE...SL. STEERS STEADY TO STRONG, SL. COWS STEADY TO 1.00 HIGHER.

SLAUGHTER STEERS: FEW HIGH CHOICE AND PRIME 2-4 1275-1350 LBS. 71.50-72.50, CHOICE 2-3 1125-1475 LBS. 65.00-70.50, FEW

1500-1680 LBS. 58.00-63.75, SELECT 1-3 55.00-64.50.

HOLSTEINS: FEW CHOICE AND SELECT 1210-1580 LBS. 55.00-58.00, FEW STANDARD 1-2 49.00.

HEIFERS: CHOICE 2-4 1100-1400 LBS. 65.00-71.50, SELECT 1-2 55.75-64.75, STANDARD 1-2 45.50-54.00.

COWS: BREAKERS 75-80% LEAN 38.00-42.75, ONE 43.75, BONERS 80-85% LEAN 36.75-40.50, LEAN 85-90% LEAN 33.00-39.00. SHELLS DOWN TO 26.75.

BULLS: YG#1 1075-1950 LBS. 46.00 50.00, YG#2 1070-2050 LBS. 40.00-46.00.

FELDFR CATTLE: STEERS LARGE 2 800-1150 LBS. 45.00-47.00, MEDIUM 1 425 650 LBS. 81.00-86.00, MEDIUM 2 350 500 LBS. 45.00-57.00; HEIFERS MED. AND LARGE 1 250-600 LBS. 71.00-80.00, MEDIUM AND LARGE 2 350 600 LBS. 56.00-65.00; BULLS MED. 1 400-750 LBS. 69.00-83.00, MEDIUM 2 300-700 LBS. 55.00-68.00.

CALVES: 93...VEALERS FEW GOOD 140 215 LBS. 50.00-60.00, STANDARD AND GOOD 75-105 LBS. 20.00-26.00, UTILITY 55-70 LBS. 10.00-15.00.

FARM CALVES: #1 HOLSTEINS BULLS 95-120 LBS. 120.00-147.50, #2 85-120 LBS. 30.00-100.00; #2 HOLSTEIN HEIFERS 85-105 LBS. 90.00-205.00. BEEF TYPE BULLS AND HEIFERS 80-110 LBS. 65.00-132.50.

HOGS: 93...BARROWS AND GILTS 49-54% LEAN 230-280 LBS. 38.00-39.50, 45-50% LEAN 230-280 LBS. 37.00-38.00, 45% LEAN 230-290 LBS. 36.00-36.50.

SOWS: US#1-3 430-670 LBS. 26.00-32.00, FEW MEDIUM 230-290 LBS. 23.00-24.00.

BOARS: ONE 385 LBS. 7.50. FEEDER PIGS: 4 US#1-3 125-145 LBS. 15.00-22.00 PER CWT.

SHEEP: 0...NO MARKET TEST. GOATS: 1...NO MARKET TEST.

Grantsville Livestock

Grantsville, Maryland

Report Supplied by Auction

Saturday, December 18, 1999

STOCK BULLS AND STEERS 200-500 LBS. 50.00-100.00. STOCK HEIFERS 45.00-90.00. SLAUGHTER STEERS GOOD TO CHOICE, UP TO 65.00; MEDIUM TO

GOOD 45.00-58.00. HOLSTEIN STEERS GOOD 36.00-52.75, LIGHT 35.00-55.00. SLAUGHTER HEIFERS GOOD TO CHOICE 56.00-60.00, MEDIUM TO GOOD 50.00-55.50. BULLS: HEAVY 35.00-50.00, LIGHT 35.00-54.00. COWS: UTILITY HOLSTEINS 32.00-40.00, CANNERS 25.00-33.00, CULLS 22.00 AND DOWN. BOB CALVES 30.00 AND DOWN. HOLSTEIN BULL CALVES RETURN TO FARM: 90-120 LBS. UP TO 98.00. HOLSTEIN HEIFER CALVES RETURN TO FARM UP TO 161.00. BEEF X CALVES RETURN TO FARM, UP TO 100.00. HOGS: TOP QUALITY UP TO 40.00, HEAVY UP TO 40.00, LIGHT 20.00-32.00, FEEDER PIGS BY THE HEAD UP TO 25.00. SOWS: 15.00-30.00. MALE HOGS: 5.00-20.00. LAMBS: 70-85 LBS. UP TO 115.00, 85-125 LBS. UP TO 95.00, 30-60 LBS. UP TO 130.00, CULLS UP TO 65.00. SHEEP: UP TO 40.00. GOATS: ALL BY THE HEAD, LARGE 60.00-150.00; MEDIUM 40.00-75.00; SMALL 20.00-50.00. NO SALES SAT., DEC. 25 AND SAT., JAN. 1.

Lancaster Farming Classified Ads

Now searchable on the Internet



Check Out Our Web Site

www.lancasterfarming.com

Commitment to Agricultural Industry

Our name alone tells you where our interest lies.

We're locally-owned and operated. We know Lancaster County and can respond with timely answers to your loan requests.

Whether you need financing for buildings, land, livestock or machinery, working capital or a loan tailored to specific needs, look to the bank that is committed to your industry and has been for more than 136 years. **Bank of Lancaster County.**

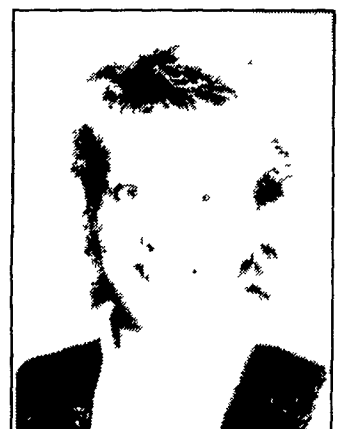
At Bank of Lancaster County, we take pride in providing our customers with exceptional service targeted toward their specific financial needs. We understand your business.

And, we're committed to developing long-term relationships. Our Agricultural Lenders are available to meet with you at a time that fits your schedule... on your farm.

Why not give Stan Michonski or Mary Henry a call? We're looking forward to talking with you about banking on your terms... on your farm.



Stan Michonski
Assistant Vice President
Agricultural Lending
Call (717) 581-6020



Mary Henry
Assistant Vice President
Agricultural Lending
Call (717) 464-4520



Bank of Lancaster County, N.A.
The Better Bank.



Member FDIC