

1 FARM EQUIPMENT

WANTED: Old motorcy cles, minibikes, scooters, ATV's, etc. Private collector. 610-692-6079.

JD 620 w/fully hyd. Dual loader, WF, PTO, no 3 pt, very clean & nice, \$4,250. 410-833 9091

1975 IH 966, rebuilt engine, dual PTO, new clutch, price \$9,000 (856)769-4025.

MX 135 MFD Cab, 1842 Rrs, Case Warranty 250 hrs., Like New. 717-464-2874 LEHMAN TRACTOR.

JD 2950 F.W.D. SHARP Tractor, excellent runner, radial tires. Be fussy & this will suit you. Reduced from \$24,500 to \$23,500. Zeisloff Eq 800-919-3322.

JD 925 Moco discbine 1999 model used only 150 acres. 717-664-1004

JD 4455 Tractor, Cab, Power Shift, Nice \$35,500. 301-733-2195

JD 1520 Rebuilt Eng New Rear Tires, \$4200; Brillion Roller Harrow 24' \$3500.; Great Plains 20' Folding Drill \$7,000; 717-362-3773 Evenings.

320 Oswalt 3 auger TMR trailer mixer w/J-Star scales, SS bottom, new bottom fighting, good working order, \$3900. 12' Unloader trailer w/cattle racks, \$500. 570 672-2213.

Just purchased (2) JD4430's coming soon. Sorry last 2 sold off of truck Call Zeisloff Eq. 800-919 3322.

17KW Genset, 3 phase, 120/230, 3 cyl, Lister diesel, good working cond, \$4200. 717-687-0186

Manure spreaders, New Idea ground drive. Buy, Sell, Trade, Repair. Lancaster Co. 717-786-3387

MAKE OFFER on combine Trade ins, We're serious to move before end of year! Zeisloff Eq. 800-919-3322.

JD 4640, 4480 hrs AG & turf tires, cab, AC 3pt PTO power shift, 90% mowing hrs. Also, JD 830. JD 2840, 3340 hrs, loader. MF 20 w/973 hrs since rebuilt. Int. 424 gas, turf tires Toro, gas, w/7 gang Kubota 3750 loader, 4x4. 1625 hrs. 301-384-7146

IH 1468, cab, duals, 3 pt., PTO, 2 hyd., \$7,500. 410-833-9091

Ford NH 1630 Deluxe, 1997 4WD Hydro Loader, 100 Hrs, \$14,900. 717-545-9120.

Int. 5500 10-tooth chisel pull-type, \$1500; Int. 7-tooth 55 chisel plow 3pt, \$1150, NH 461 haybine w/cylinder, \$375; JD 13' disc, \$875. 610/562-4464.

500,000 BTU Jackson & Church hot air furnace, city or LP gas, like new, \$1500. 717/776-7725.

52 Vac Case \$2000; Tricycle 3 Point Hitch, Overhauled. new Tires. 301-724-5126.

1066 Int. hydro FWD, dual PTO, start good, run good, as is, good rubber, \$5250 610/593-6481 leave message.

M.F 1100, 95/hp diesel, m.p., good cond. \$6,500. 814-467-8839

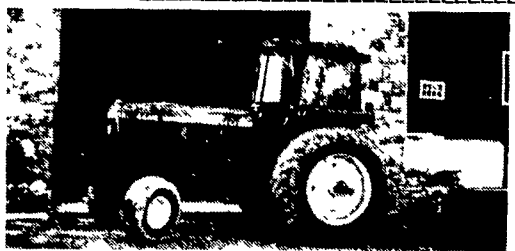
Lincoln welder, 2 cyl. Wisconsin engine on trailer w/ball hitch. Eli K Ebersol, 426 Beechdale RD, Bird-In-Hand, 17505 717-299-6193

DMC grain cleaner, 10" lift auger. Purchased new 11/96. \$5,250. Call 215-453-2901 (9am-4pm).

Gehl 980 wagon, 3-beater, tandem w/roof, excellent condition, \$7900; Avco Ezee flow fertilizer seeder spreader, 2-ton cap., \$300. 717/733-9723.

IH 1466 cab, runs good, weak TA, good rubber, cheap h.p., only \$6,900. Looks good. Zeisloff Eq. 800-919-3322.

JD 2510 diesel w/JD front blade, v.g. \$7250. JD 40 gas, 3pt, WF, \$3650. 410-374-6493



J.D. 4440
AM/FM, AC/Heat, Front & Rim Weights, 540/1000, PTO., 4,700 Hrs., Very Nice

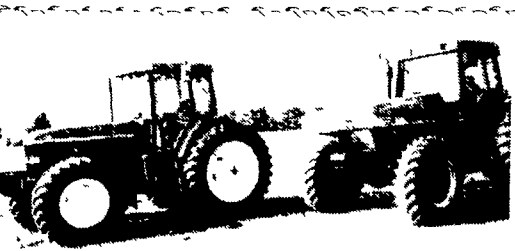
\$22,500

Phone 610-746-1824



Case 1594 Tractor
960 Actual Hrs., 2 Outlets, Power Wheels, AC, Heater, Snow Plow

717/665-3816

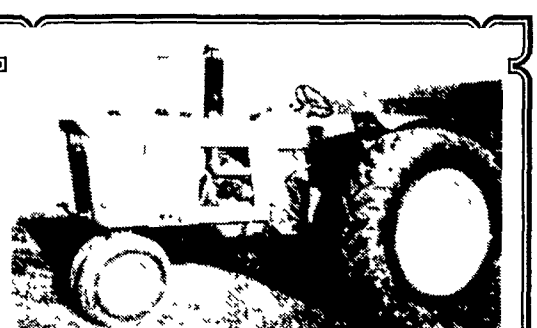


JD 7410
1200 Hrs., 3 Remotes, Power Quad

717-273-6105

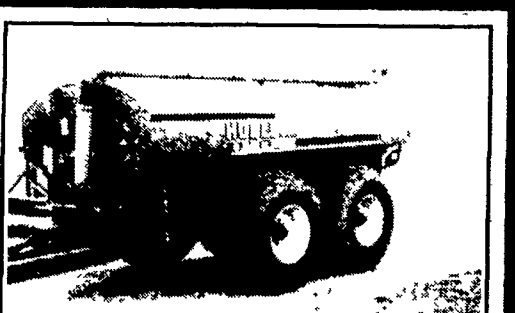
Case IH 7220
1400 Hrs., 20.8x42 Radials

\$49,800



John Deere 3020
Good Condition, New Paint, New Starter, New Battery, 90% Tires, 1 Hose Outlet

717/665-3816



1996 HOULE
3,850 Gal., Nice Condition - \$9,500

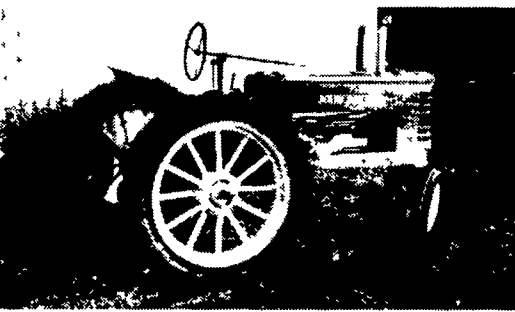
717-369-4115

XXXXXXXXXXXXXXXXXXXXXXXXXXXX
IH 1086, Cab & Air, New Rubber & Paint, Showroom Condition.....\$20,000
IH 1486, Cab & Air, New TA & Clutch, New Rubber & Paint, Showroom Cond.....\$20,000

Doing All Types of Repairs and Reconditioning IH Tractors

Financing Available
717-776-5515
JEFF SHOWAKER

Clean off-the-farm, field test tractors Most Reconditioned And Sold With Warranty Positively no out-of-state Personal checks



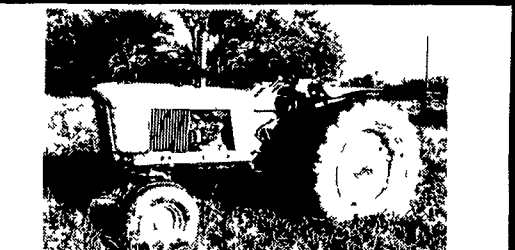
1939 John Deere "B"
5th and 6th gear box, new radiator, valves, etc., fresh paint, runs great \$2900 OBO

610-593-2836



CASE 1840
1995 Aux. Hyd., Weights, Lights, Bolt On Cutting Edge, Good Cond.

\$11,200 (717) 336-4024



JD 2510 Diesel, Wide Front, Syncro Range, Excellent Condition, New Rubber \$7,495

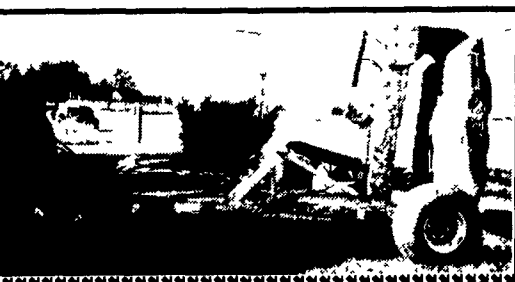
Also Available
JD 2350 4x4 w/Loader \$12,500

TANEYTOWN FARM EQUIPMENT
410/751-1500

Email: taneytownfarmequipment@juno.com



IH 1086, Cab, TA, 20x38 Rubber \$8,900



DEGELMAN LARGE ROCK DIGGER
for your big tractor - \$5,400

Craftsman 5' tool box, like new, loaded w/tools.

717/272-0041 Leb. Co.



Oliver 1850 HFWD, Diesel, PTO, 3 PTH, Engine Stuck Best Offer
Long 560 MFWD, Diesel, PTO, 3 PTH \$4,900

610/345-0644

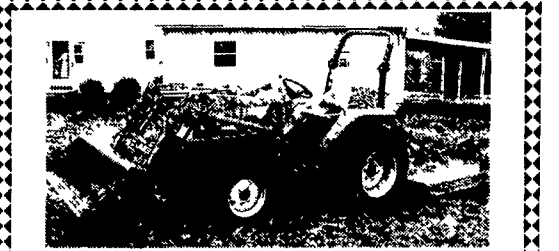
Leave Message



J.D. 4440
AM/FM, AC/Heat, Front & Rim Weights, 540/1000, P.T.O., 4,700 Hrs., Very Nice.

\$22,500

Phone 610-746-1824



New MF1250 4WD
16 Sp Shuttle w/Loader \$16,700

Add \$800 for brush cutter
0% Financing to qualified buyers
(717) 445-4541

QUALITY USED EQUIPMENT

- 73 Ford 4000, gas PS 8x2 Trans 3pt Ind PTO Dual Remotes 16 9x30 \$7,900
- Ford 1720 27hp Diesel FWD, Shuttle PS 3pt Live PTO Ag Tires w/Ford QT Loader 420 Hrs Coming In
- Ford 1920 33 hp, Diesel FWD, PS 3pt Live PTO Ag Tires w/Ford QT Loader, 900 Hrs Coming In
- 58 Ford 851, Gas PS 3pt Live PTO w/Ford HD Loader & Backhoe \$7,900
- NH LX885 Deluxe Skid Loader, 2-spd Hydro 72 Bucket, 750 Hrs Coming In
- 70 Ford 3400 Gas, PS 3pt Live PTO, Industrial Loader Side Mount Sickle Bar \$5,900
- AC D14 Gas, WF PS, Live PTO 3pt w/Loader Very, Very Nice \$5,400
- Farmall H w/Power Steering \$1,475

215/536-3321 888/393-3208

"Cash buyer - good used equipment"



1998 MF 8150 DYNA SHIFT,
4 Hrs., 18-42 - \$58,000

- MF 3525, 4x4, Cab & Air..... \$21,000
- MF 298 w/Loader..... \$11,000
- MF 135, Diesel w/Loader..... \$6,200
- JD 7600, 4x4, Cab & Air, PS..... \$37,000
- JD 4050, 4x4, Cab & Air, PS... \$28,000
- JD 2750, 4x4, Cab & Air..... \$18,000
- JD 2150, 4x4, Needs Work..... \$8,000
- Deutz Allis 6250, 4x4, Loader . \$11,500
- Case 1845C Skid Loader..... \$8,800

LLOYD M. BURKHOLDER

170 Cocalico Creek Rd, Ephrata, PA 17522

717-859-6616

• **JD 115 Disc,**
Not a Rock Flex..... \$1,500

• **AC 6080 C/A/H,**
3,450 Hrs., Nice Cond..... \$13,900

• **AC 6060**
Rebuilt Eng, New Park..... \$8,900

BARNDT TRACTOR

215-795-2281