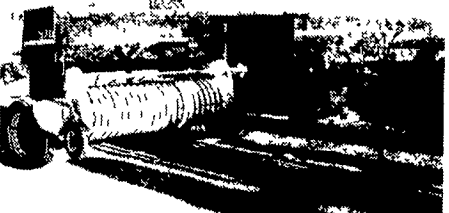


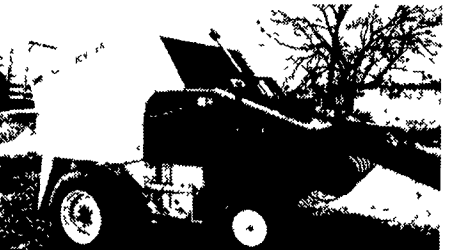
NEW HOLLAND 3930 4x4 w/LOADER (LOW HOURS)



NEW HOLLAND TN75D 4x4



NEW HOLLAND 570



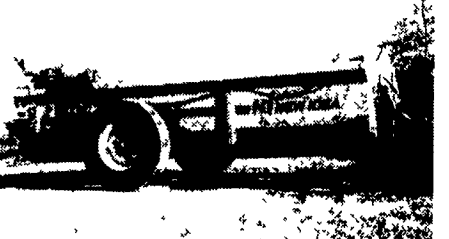
(1 OF 2) NEW IDEA 484's



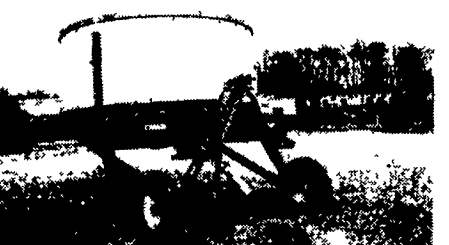
GEHL 2360



CASE INTERNATIONAL 8360



NEW IDEA 3626



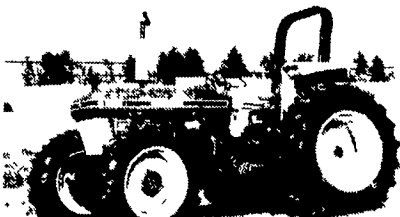
KIDD 6-10



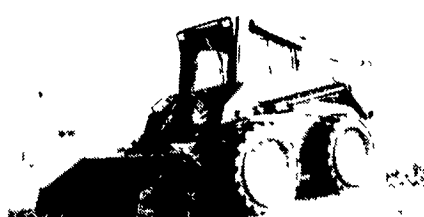
(2 OF 3) FORD PICKUPS



NEW HOLLAND 688 (IN NEW CONDITION)



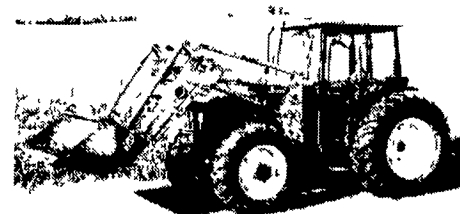
FORD/NEW HOLLAND 4610 II 4x4



NEW HOLLAND LX985 (160 HOURS)



MASSEY-FERGUSON 4253 (16 HOURS)



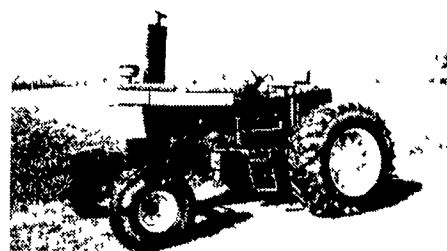
JOHN DEERE 5500 4x4, w/LOADER



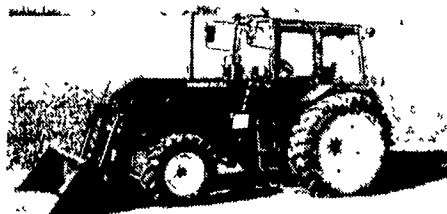
INTERNATIONAL 3288



FORD 6710



FORD TW5



BELARUS 925, w/LOADER



FORD 545C



KUBOTA B7100



(1 OF 2) NEW HOLLAND LX885's



NEW HOLLAND D1000

NOTICE OF A VERY LARGE  
**AUCTION**  
FOR  
**ANTIETAM**

Ford Tractor, Inc.

TO BE HELD ON-SITE NEAR

HAGERSTOWN • MARYLAND

WEDNESDAY • DECEMBER 29 • 1999

10:00 A.M.

NOTICE: Due to an excess in used inventory, Antietam Ford Tractor, Inc., will sell the following at auction

**(26) FARM/COMPACT TRACTORS (26)**

Case/IH 7220 Magnum 4x4 w/cab (only 1800 hrs), (7) Tractors With Loaders, including NEW HOLLAND TN75D, MFWD, w/cab and New Holland 32LA loader, low hrs, sharp, NEW HOLLAND 3930, MFWD, w/cab and New Holland 7310 loader, sharp, JOHN DEERE 5500, MFWD, w/cab and John Deere 540 loader, sharp, FORD 545C, MFWD, ROPS, BELARUS 925, MFWD, w/cab and loader, 450 hrs, KUBOTA B7100, w/loader, 633 hrs, Woods RM48 rear mount finishing mower; KUBOTA 1245DT, w/loader and hoe attachment, 915 hrs, FORD TW5; FORD 6710, w/cab, MASSEY-FERGUSON 4253, w/cab, 16 hrs., new; INTERNATIONAL 684; INTERNATIONAL 3288; INTERNATIONAL 5088; INTERNATIONAL 1566; INTERNATIONAL 674; FORD 5000; FORD 4610, MFWD, SHARP; FORD 3000; FORD 1110, 790 HRS.; FORD 8N; JOHN DEERE 2510, GAS; JOHN DEERE 2510, GAS W/WFE; JOHN DEERE 60; MASSEY-FERGUSON 40B; SATOH S650G; FORD 231, w/turf tires, CUB CADET 2185, w/48" deck; and Others as Trade-Ins Become Available.

**(13) SKID LOADERS (13)**

NEW HOLLAND LX985, 160 hrs, excellent condition; NEW HOLLAND LX885, excellent condition; NEW HOLLAND L785; NEW HOLLAND L781; NEW HOLLAND L553; (2) NEW HOLLAND L455's; NEW HOLLAND L445; CASE 1835C; BOBCAT 743; HYSTER S50C; and Others.

**(3) FORD PICKUPS (3)**

**(43) HAY EQUIPMENT (43)**

(19) Balers, including: NEW HOLLAND D1000 Big Square Baler, 2' x 3' x 8'; (11) Round Balers, including: NEW HOLLAND 688 Net Wrap, like new; NEW HOLLAND 644 Net Wrap, like new; NEW HOLLAND 640 Auto Wrap; NEW HOLLAND 855 Auto Wrap; (2) NEW HOLLAND 853's; NEW HOLLAND 849; (2) NEW IDEA 484's; CASE/INTERNATIONAL 3650; HESSTON 540; (7) Square Balers, including: NEW HOLLAND 570, excellent condition; NEW HOLLAND 565, excellent condition; NEW HOLLAND 326; NEW HOLLAND 316; NEW HOLLAND 311; NEW HOLLAND 273; IHC 440; JOHN DEERE 24T; (10) Hay Bines, including: NEW HOLLAND 499, 12', NEW HOLLAND 495, 12'; NEW HOLLAND 492, 9'; NEW HOLLAND 489; NEW HOLLAND 411 Discbine; NEW IDEA 5212 Discbine; CASE/INTERNATIONAL 8360, 12'; GEHL 2360 Discbine, 10'4", nice, NEW IDEA 5107; NEW IDEA 272 Cut/Ditioner; (10) Rakes and Tedders, including: NEW

HOLLAND 254 Tedder Rake; NEW HOLLAND 258 Rake; NEW IDEA 402 Bar Rake; TONUTTI GT250 Tedder; GEHL 3-Pt. V-Rake; (2) MASSEY-FERGUSON 23 Rakes; Other Hay Equipment, including NEW HOLLAND Inverter, NEW HOLLAND 451 and 450 Sicklebar Mowers; Hay Wagons and Other Hay Equipment

**(16) FORAGE EQUIPMENT (16)**

(3) NEW HOLLAND 900 Harvesters, NEW HOLLAND 900 3-Row Head, NEW HOLLAND 900 Hay Head, NEW HOLLAND 790 Harvester, GEHL 600 Harvester, JOHN DEERE 3940 Harvester, NEW HOLLAND 824 Head, NEW HOLLAND 770 Hay Head, NEW HOLLAND 8 Self Unloading Wagon, (2) NEW HOLLAND 40 Blowers, NEW HOLLAND 27 Blower, Gehl FB99 Blower, JOHN DEERE 65 Blower and Other Forage Equipment

**(11) TILLAGE EQUIPMENT (11)**

UNVERFERTH STP 22' S'Tine; UNVERFERTH STP 13 13' S'Tine; UNVERFERTH Zone Builder 5-Shank, ATHENS 131 Disc; JOHN DEERE 110 Disc, KASCO 9-Shank Chisel Plow, IH 720 4-Bottom, CASE 308 3-Bottom Semi-Mounted Plow; BRILLION 4-Row Cultivators and Other Tillage Equipment

**(7) MANURE HANDLING EQUIPMENT (7)**

NEW HOLLAND 308, 2,300-Gal Spreader, NEW HOLLAND 304 1,200-Gal Side Discharge; NEW IDEA 3615 150 Bu Spreader, NEW IDEA 3626 Spreader, excellent condition; NEW HOLLAND 520 217 Bu. Spreader, NEW HOLLAND 155 220 Bu. Spreader and Others

**ROTARY MOWERS**

WOODS M84 7' Rotary Mower, WOODS RM48 Finishing Mower; WOODS 5218 Mid Mount Deck; WOODS 80 Rotary Mower, (2) FORD 914 60" Mid Mount Mowers; FORD 909 Rotary Mowers; MASSEY-FERGUSON 68 Rotary Mower; PITTSBURGH 220 Finishing Mower and Others Mowers

**MISCELLANEOUS EQUIPMENT**

SCHULER BF175 Feed Cart, Gravity Bin Wagon; GREAT BEND GB660 Loader, KIDD 610 Bale Chopper, 18' Grain Auger, GEHMAN Rubber Tire Manure Scraper; Bale Spears; 8-1/2' Hydraulic Snow Blade; WOODS RB700 Blade; FORD 903 Post Hole Digger; NEW IDEA 705 Unisystem, w/grain and corn head; Various Skid Loader Buckets; Pallet Forks, HUSQVARNA LTH140 14 Hp. Lawn Tractor, Tires, Parts and Other Related Equipment.

AUCTION COMPANY NOTE: Jim Reed, President of Antietam Ford Tractor, Inc has made the decision to liquidate all used and trade-in tractors and farm equipment. All items will sell absolute to the highest bidder, regardless of price with the exception of a few pieces. Most items are field ready. Don't miss this auction!

FINANCING BY  
NEW HOLLAND  
Credit Company  
and  
FIRST NATIONAL BANK  
OF MERCERSBURG

FINANCING AVAILABLE  
by contacting Judy at (301) 791-1200  
at least 3 days prior to the auction.

DIRECTIONS: The auction will be held on-site at the facilities of Antietam Ford Tractor, Inc., conveniently located between Hagerstown, Maryland and Waynesboro, Pennsylvania along Maryland Route 60 at 20927 Leitersburg Pike From Interstate 81 Take Exit 9 (Maugans Ave) East continuing 3 miles to dead end at Route 60 Turn left and continue to auction site (Watch for auction signage)

AUCTION SITE PHONE: (301) 791-1200

TERMS: Cash or approved check on day of auction with positive identification required for registration. Subject to additions & deletions

• Food to be served by Saint Paul's Lutheran Church

NO BUYER'S PREMIUM

JAMES G. COCHRAN • CEO/AUCTIONEER - THOMAS E. BIKLE • DIRECTOR OF MARKETING

J.G.  
**Cochran**

Professional Construction & Industrial Equipment Auctioneers

7704 Mapleville Rd., P.O. Box 222, Boonsboro, MD 21713-0222

301-739-0538 • TOLL FREE (MD) 1-800-310-2844 • FAX 301-432-2844

NATIONALLY RECOGNIZED - AWARD WINNING AUCTIONEERS SINCE 1972

PLEASE CLIP THIS AD FOR IT WILL APPEAR ONLY ONCE

