

Kids Korner

SEEK AND FIND

FIND THESE WORDS IN THE PUZZLE BELOW

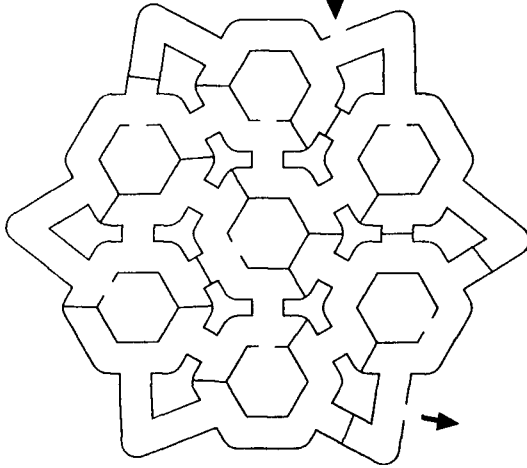
- ARCHERY
- JUDO
- SHOOTING
- BASEBALL
- KAYAKING
- TENNIS
- FENCING
- ROWING
- WRESTLING

THE WORDS READ UP, DOWN AND ACROSS

A R O W I N G R C H
 T E N N I D N X Y B
 G R T E N N I S R A
 J Y G S H O K H O S
 U R N H E R A O W E
 D E I O T Y Y O I B
 D H C O U I A T M A
 O C N P I O K I G L
 W R E S T L I N G L
 S A F J U D O G S H

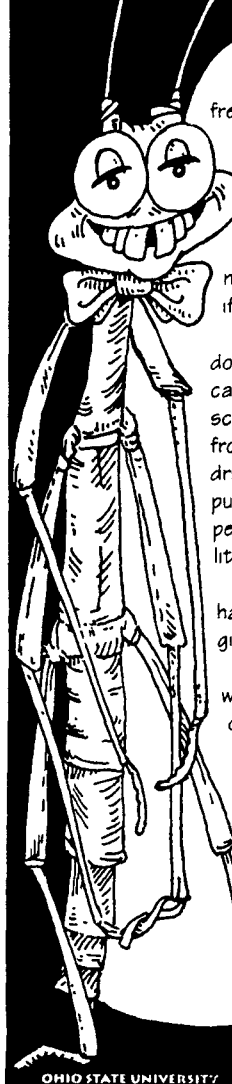
MAZE

Start Here ↓



Smart Stuff

WITH TWIG WALKINGSTICK



Why are Christmas trees so fragrant?
 Resins are the reason for the rich, sweet smell of a freshly cut pine tree

All conifer trees — conifers are trees that don't lose their leaves, such as Douglas firs and Scotch pines — have a gooey sap that moves throughout the trees' needles, bark and roots. It's this sap, called resin, that sticks to your fingers when you crush a pine needle, and it coats the base of a cut pine tree, especially if the tree isn't put in water right away.

Forestry researchers aren't sure exactly what resins do. They do know, however, that resins are a mixture of carbon, hydrogen and oxygen chemicals. And, the scientists know that the resins help protect the tree from insects and diseases. For example, when an insect drills a hole in the tree's bark to get inside, the oozing resin pushes the insect away and seals the hole. It's not perfect protection, but the resin does offer the tree a little bit of defense.

But back to the smell. Each different kind of conifer has a slightly different chemical mix in its resins that gives each kind of tree its own unique, pine-tree scent.

When a cut conifer has plenty of water and is in a warm, dry area — like your living room — the chemicals that make up the resins evaporate.

That means they dry up and float into the air, where your nose can appreciate the aroma!

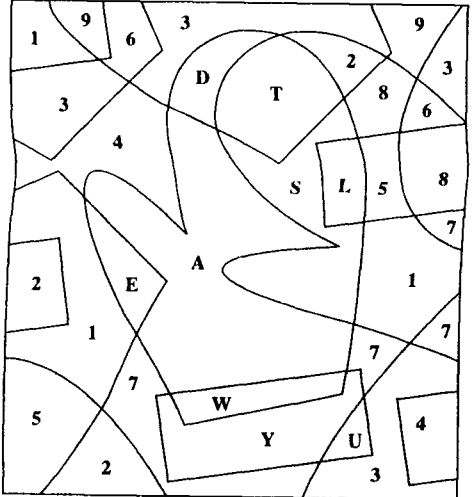
Scientifically yours,

Twig



OHIO STATE UNIVERSITY COLLEGE OF FOOD, AGRICULTURAL, AND ENVIRONMENTAL SCIENCES

HIDDEN PICTURE



Color in each space that contains a letter.

What Do You Know About Christmas Trees?

See how many questions you can answer about Christmas trees. Some of the answers may be in the above article. All the answers are at the bottom, but don't look until you've tried!

- 1 Where was the first Christmas tree lot in the United States?
- 2 How many states grow Christmas trees?
- 3 How many Christmas tree growers are there in the United States?
- 4 Can you name three types of Christmas trees?
- 5 How were the first Christmas trees decorated?

True or False?

- 6 When a tree is cut, one seedling is planted in its place.
- 7 It takes three years for a new Christmas tree to grow.
- 8 The United States was the first country to have Christmas trees.
- 9 Alaska and Texas are the top Christmas tree-growing states.
- 10 President Harry S. Truman put up the first White House tree.

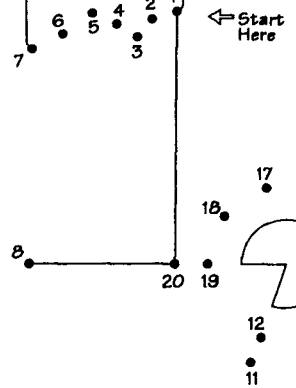
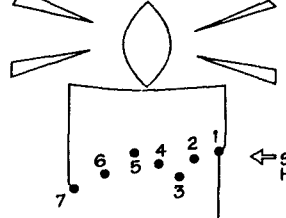
Answers:

- 1 New York
- 2 All 50
- 3 About 15,000
- 4 The most popular Christmas trees are balsam fir, Douglas fir, Fraser fir, noble fir, Scotch pine, Virginia pine, and white pine.
- 5 Fruit, sweets, and colored paper.
- 6 False. Two to three seedlings are planted to replace a cut Christmas tree.
- 7 False. The average growing time is seven years, and some take as long as 15 years.
- 8 False. German families first decorated trees and brought the tradition to the United States.
- 9 False. Oregon, Michigan, Wisconsin, Pennsylvania, California, and North Carolina are the top Christmas tree producers.
- 10 False. Franklin Pierce brought the tradition to the White House.

To Tree or Not to Tree

- Will your family have a real Christmas tree this year? If so, you will be one of more than 30 million families in the United States with a real tree.
- The tradition of using trees goes back many centuries. Way before the first Christmas, Egyptians used green palm branches as a symbol of life on the shortest day of the year, which is in December. During the winter festival of Saturnalia, ancient Romans decorated their homes with evergreens.
- Back in the 16th century, German families decorated fir trees with fruits, sweets, and colored paper. That tradition spread throughout Europe, and German settlers and soldiers brought the tradition to the United States.
- The Christmas tree's popularity grew fast in the United States. In 1851, the first Christmas tree lot opened in New York.
- The White House Christmas tree traditions started with President Franklin Pierce. Then President Calvin Coolidge started the National Christmas Tree Lighting Ceremony.

connect the dots



ANSWERS

H	S	O	O	D	L	S	E	V	S
T	G	N	I	L	S	E	M	W	R
G	I	R	O	I	O	I	N	O	C
V	W	I	V	I	O	O	I	C	H
I	O	I	O	I	O	I	O	D	E
B	E	I	O	I	O	I	O	U	R
O	W	E	R	V	O	H	R	S	O
S	H	O	H	S	H	R	S	O	A
R	A	S	I	N	N	E	R	G	R
S	R	A	S	I	N	N	E	R	G
B	E	I	O	I	O	I	O	T	E
N	X	B	E	I	O	I	O	N	N
C	H	R	O	I	O	I	O	A	R

Holiday Greetings

