

# Obeco "IT'S THE BEST PLATFORM MONEY CAN BUY... AND IT'S PART OF EVERY OBECO TRUCK BODY BUILT"

### OBECO STAKELESS



Maximum grain capacity. Rugged construction. 14-gauge 60" seamless steel. Die-formed vertical ribs on 12" centers. 3-way rear-gate system. Truck lengths: 18', 20', 22', 24'. Height: 60".

### STEEL CITY STAKES



Adapts perfectly to several hauling needs. 16-gauge corrugated steel slats welded to 14-inch gauge steel stakes. Lengths: 8-24 feet. Height: 40". Also available with hardwood slats riveted to hardwood stakes.

### OBECO STEEL SIDES



Big load muscle. 16-gauge cold-rolled die-formed corrugated steel. Optional fold-down tip-tops. Available lengths: 8-24'. Available heights: 40", 48", 54".

### OBECO HOISTS



Matched to your hauling needs! Twin Cylinder models designed for bodies up to 24' and capacities of 32 tons. Single cylinder hoists up to 16' capacities up to 21 tons.



**ANNVILLE EQUIPMENT CO.**  
 470 Palmyra-Bellgrove Road, Anville, PA 17003  
 717-867-4631 1-800-233-0520  
 We provide parts & service for new leader spreaders. Building the best since 1939.

**35 TRUCKS AND TRAILERS**

1996 GMC 4x4 K1500, 48K, V8, very nice \$14,900 304-728-0204

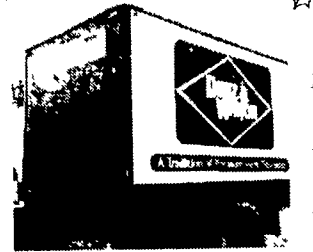
**TRUCKERS**  
 27' HD RATCHETS.....\$13.95  
 WINCH STRAPS.....\$12.95  
 RUBBER T. STRAPS.....54¢  
 REFLEXITE RED/WHITE TAPE.....82¢/Ft  
**TIRONIE TARPS**  
 (800) 874-2928 • FAX: (570) 584-3127



**New Flatbeds Available**  
 Sizes currently available are 12', 14', 20', 22' and 24'. Racks are also available



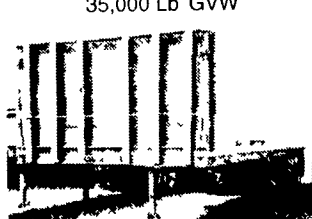
**80 Ford LN900 Water Truck**  
 477 V-8, 5 Spd, 2 Spd Rear, 2400 Gal Heil Stainless Water Tank, PS, AB, 10 00x20 Tires, 35,000 Lb GVW



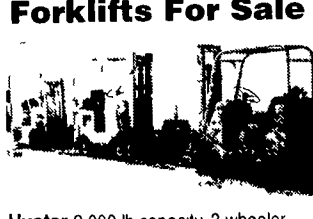
**12' Reefer Body**, under body refrigeration unit, Uses 220 electric. Has damage



**94 IH Model 4900**  
 DT466 engine, 5 spd, single rear, air brakes, A/C, 32,900 GVW, double frame, 11x22 5 Budds.

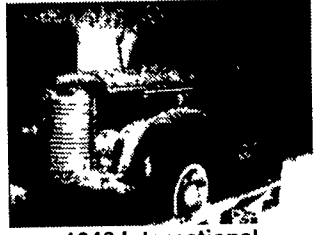


**9 40' -45' 1970's & Newer Steel Flatbed Trailers**  
 some have sliding tandems, all in good condition \$2,500/Ea. and Up



**Forklifts For Sale**  
 Hyster 2,000 lb capacity, 3 wheeler, propane gas, solid tires 92" Fork height, 48" forks  
 Towmotor 4,000 lb capacity, 2 stage mast, 108" Fork height, 42" forks, solid tires  
 Towmotor 2,000 lb capacity 106" Fork height 42" forks solid tires

254" WB 19' NEW Lumber Body w/Ratchet Tie-Downs w/Dumping Hoist

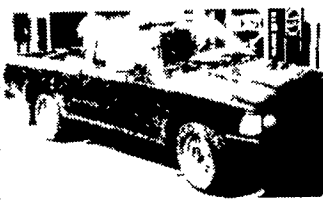


**1948 International**  
 KB7 Cab & Chassis, 50,000 miles, 269 gas engine, 4 spd trans, hydraulic brakes, excellent condition, been in storage over 30 years



1500 gallon Sludge Tank

4 I-Beams, 49 Long, 28" High w/12-1/2" Web



**1993 Toyota Pickup**  
 4 Cyl, 5 Spd Trans, AM-FM Radio, A/C, Excellent Condition, High Mileage



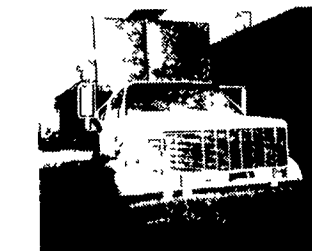
**1994 Isuzu Model NRR**  
 6 Cylinder, Auto, 1400 Aluminum Tank with Pump, 13,250 GVW, 17,438 Miles



**Clark Crane, 14 Ton Capacity**  
 4-53 Detroit, 60' boom, 14 00x24 tires, runs good serial #720



**Michigan Loader Model L30**  
 Quick Coupler, Comes With 1 Yard Bucket and 60" Forks, Runs Excellent



**1982 GMC Topkick**  
 3208 Cat, 5 Spd, 2 Spd Rear, Hydraulic Brakes, PS, 27,500 GVW, 10 00x20 Tires, 16' Long High-Lift Flat Body



Aluminum Tanker/Trailers 7500 gal and up



**W7 Case Loader**, 15 5x25 tires, runs good serial #9900486



**83 Eagle Wagon Ltd.** 4 WD - 115,000 Miles



**89 GMC Sierra SLE**  
 Chattanooga Choo Choo Custom, 4WD, 16" Aluminum Wheels, Running Board, 132,007 Miles



**1959 American LaFrance Pumper**, Continental Gas Engine, 5spd, Looks & Runs Good



**1994 DanCo Aluminum Rollback**, 18 Long, Dual Controls, Towbar, Excellent Condition

**11.1 60 series Detroit engines**  
**12.7 60 series Detroit engines**  
**8.2 non-turbo Detroit engines**

## ALL STAR

### New & Used Trucks

**(1) 2000 MACK MS250P**  
 Chassis, E3-190, 4106A-6 Spd, 12 Front, 21 Rear Axle, 217 WB

**1999 MACK CL713**  
 E7-460, 13 Spd, SS440, Spring Suspension, 17.5' Steel Dump Body

Other Trucks Available - Call For Details

- Used Trucks -

**1995 MACK CH613**  
 EM7-300, T2060-6 Spd., 38,000 lb - Camelback, 187 inch WB, 288,505 miles

**Includes 200,000 Mile Engine Warranty,**  
 All Trucks Have Been Run on Dyno. 20 -1995 E7-350 RTLO14610B 10 Spds, DS404 - 3 9OR on Air, Steel Disc Hub Pilot, 295/75R 22 5 192 WB, 42" Highrise, 440,000 Miles


**1984 MACK RWS713**  
 E9-500, 10 Speed, Air-Ride, 3 78 Ratio, 242 in WB, 11R24 5, Alum Disc, No Power Steering

**1988 MACK R-MODEL**  
 E6-350, T-2090, 9- Spd, Camelback Suspension, 4 42 Ratio, 11R22 5 Tires, Steel Disc Wheels

## Wm. Cohen & Sons, Thorndale, PA

(610) 269-1298 Call between 7 am - 4:30 pm

<p><b>Hundreds of Used Truck Tires For Sale</b>                  Sizes from 16" to 24"  <b>1979 Crane Carrie Cement Mixer</b>, 10 Yd Rex Mixer, 230 Cummins, 8 Spd Trans., 44,000 Lb. Rears Asking \$8,500</p>	<p><b>Used Overhead Door For Sale</b>                  16'H x 14'W Asking \$550  <b>Aluminum Loading Ramps</b> 9'x10', also some other sizes available  <b>Yale Electric Hoists</b> 1/2 ton cap, 440 volt, single and three phase. Asking \$350/ea.</p>	<p><b>Pedestal Grinder</b> Baldor 2 Hp, 3 phase, 220 amps  <b>Toledo Scale</b> 1,000 lb. Capacity  <b>Oil Heaters</b> 250,000 BTU  <b>New Onan Generator</b> 2500 Watt Gas Powered</p>
<p><b>Used Van Trailers - For Sale or Rent</b></p>		

**LESHER  SALES & SERVICE**  
 2700 Cumberland Sts. Lebanon, Pa. 17042 (Route 422 West) **717-273-4535**