

3 SILOS AND UNLOADERS

Patz 100' belt feeder; Starline 24' Power track silo unloader; Goliath 20 unloader 717/626-4072

JD 450D Loader w/Root Rake & Bucket 12G CAT Grader. 814 652 5604

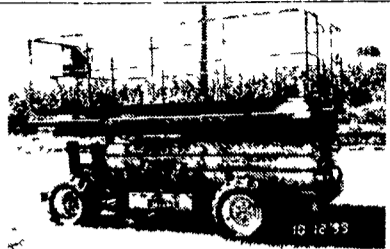
sanborn portable wide band sawmill, 60hp eng, 26" throat, \$15,000. Pettibone super 8 4WD fork-lift Jake, 302-654 1436

AC TL12 4WD, straight frame loader w/cab. 1 1/4 yd bucket, good condition, \$4,200. 717 677-6703.

28 Foot Portable Hydraulic Drive, Conveyor, V4 Wisconsin Powered New 21" Belt & Tail Pulley, Runs Excellent \$2,500. (570)868 5467 After 7PM.



BOBCAT 7753 SKID LOADER, 2700 Hrs Good Condition Good Rubber \$9,800



MARKLIFT 4X4 25 \$4,500

1996 1845C SKID LOADER, 98 Hrs Like New \$18,700

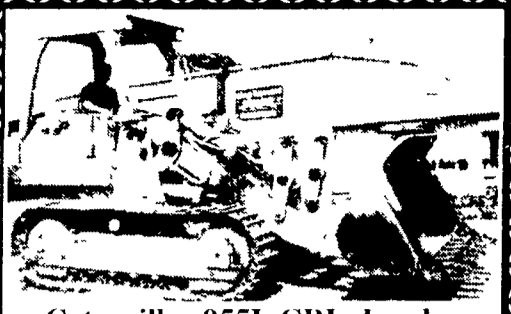
717/529-2641 • 717/529-6359

No Sunday Calls



JCB 1400 Wheel Loader Backhoe 4x4 - \$16,500

Heavy Equipment Loader Parts, Inc. 10070 Allentown Blvd., Grantville, PA 17028 (717) 469-0039 (800) 446-0505



Caterpillar 955L CRL Loader Big BTM V Good Condition \$25,000

Heavy Equipment Loader Parts, Inc. 10070 Allentown Blvd., Grantville, PA 17028 (717) 469-0039 (800) 446-0505

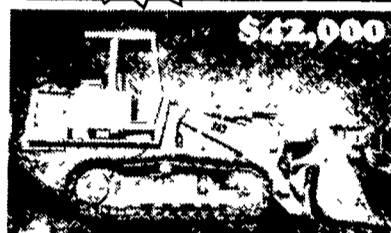
JERRE MARTIN REPAIR

391 N. Farmersville Rd., Ephrata, PA 17522 (Just minutes off RT 222)

(717) 859-3283

Sales Service

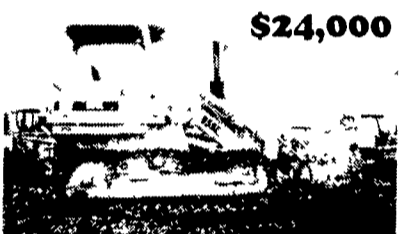
Rentals Repairs



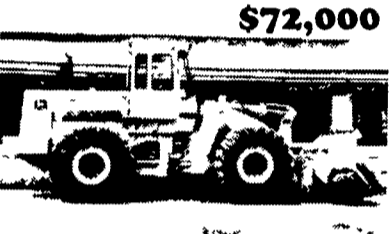
'87 Cat 963, 50% U/C



86 Cat 963. New U/C



Cat 955L, Like New U.C., Rebrushed Loader



JD 744E Excellent, Like New Rock Tires

Financing Available

Road Service Available Now Custom Repairs On All Makes Construction Equipment

WE ARE BUYERS FOR LATE MODEL CONSTRUCTION EQUIPMENT NEEDING REPAIRS

Case 580E EROPS, 2 WD 2x4.....	\$12,000	'83 JD 555A crawler loader, good cond..	\$17,000
Case 850B w/6-way, excel.....	\$16,500	'87 JD 555B crawler loader, 4N1 bucket, good cond ..	\$22,000
'95 Case 1840.....	\$10,200	'96 JD 455G, series 4, 1,400 hrs., 4 in 1	\$42,000
'88 Cat D4H crawler, 6-way.....	\$38,000	JD 644A wheel loader, excel cond.....	\$19,000
Cat 953 crawler loader, new paint 50% U/C cab, OROPS.....	\$43,000	JD 644 B Excellent.....	\$24,000
Cat 951C crawler loader, new pins & bushings.....	\$16,500	JD 644C wheel loader, good cond ..	\$33,000
Cat 955K crawler loader, excellent.....	\$16,000	'85 JD 750 long track.....	\$32,000
'79 Cat 955L crawler loader 13X series, excel.....	\$30,000	'83 JD 750 dozer, straight w/tilt.....	\$22,000
JD 450C crawler w/6-way blade.....	\$15,000	Mark Lift 80' man lift w/Deutz diesel	\$20,000
JD 450C crawler loader.....	\$14,000	IR SP 54 vibratory roller	\$17,000

PowerPro EQUIPMENT



Own a 1998 JCB \$1,375 60 Month 6.9%

3 AVAILABLE 508C Diesel, Low Hours 8000# Capacity 4' 6" Lift

Own a 1998 JCB \$1,175 60 Month 6.9%

2 AVAILABLE 506C Diesel, Low Hours 6000# Capacity 36' Lift

Own a 1999 JCB \$1,449 60 Month 6.9%

1 AVAILABLE 532 Diesel, Low Hours 7000# Capacity 39' 4" Lift

Own a 1998 JCB \$854 60 Month 6.9%

1 AVAILABLE 520 Diesel, Low Hours 4400# Capacity 16' Lift

E-mail: powerpro@epix.net Toll-Free: (800)832-2228 New Holland ■ Paoli ■ Allentown

831 S. College St. (P.O. Box 409) Myerstown, PA, 17067
HOURS: Mon-Fri • 7:30-5:00
Saturday • 7:30-Noon
http://www.wengers.com
wengers@ptd.net



WENGERS OF MYERSTOWN
Construction Equipment & Parts

717-866-2130

Salesman: Ken Baum
Nights: (717) 272-9583
Fax (717) 866-4300
RENTALS AVAILABLE

CRAWLER DOZERS

Komatsu D31A-17, 1986 R.O.P.S., 6 Way.....	\$19,500
Case 850 B 6-Way.....	\$21,500
Komatsu D31E-20 6-Way.....	\$37,500
Cat D4H 1988 6 Way.....	\$39,500
Cat D5C LGP, Cab 1993.....	\$46,500

CRAWLER LOADERS

JD 555A 1985, ROPS.....	\$19,500
Cat 953 1981 Cab.....	\$37,500

BACKHOES

Case 580E, 1984, ROPS.....	\$12,900
Ford 555A ROPS.....	\$13,750
Ford 555B, ROPS standard.....	\$16,500
Ford 555C 4x4 Cab.....	\$23,500
Case 580SK 1993, 4x4, Cab, Ext. Hoe.....	\$26,500
1995 JCBs 210 Ext. Hoe.....	\$27,500
1994 JCB 214 Cab, 4x4.....	\$29,500
JD 710C, 1989, cab, standard.....	\$32,500
JD 710D 1995, cab, std.....	\$37,500
Cat 426 B 4x4 Cab, Ext. Hoe.....	\$37,500
1995 JD 710D Std. Cab.....	\$37,500

RUBBER TIRED LOADERS

JCB 409 1995 cab, 1,600 hrs.....	\$34,500
JCB 409B 1997 cab.....	\$37,500
Volvo L-50B, 1993, cab, QT.....	\$45,000
Cat IT18, 1985, cab.....	\$46,500
Cat IT 14B, 1993, cab, low hrs.....	\$53,500
Cat 966D 1983 cab.....	\$55,000

CURRENT INVENTORY

GRADERS

Dresser A450E, 1988, Cab & Ripper.....	\$34,500
Cat 12G Cab.....	\$39,500

FORKLIFTS

(2) Hyster S100XL-2 1995 5-Ton, LP Gas.....	\$13,000 ea.
(2) Hyster S50XL-2 1995, LP Gas, 5,000 Lb.....	\$11,000 ea.
JLG 60H Manlift, 1985, diesel.....	\$21,500
JCB 505-19 1991.....	\$29,500
JCB 510-40 1995.....	\$56,500

SKID LOADERS

N.H. L553.....	\$7,900
JD 675B, 1988, diesel.....	\$8,500
New Holland 781 1986.....	\$8,900
New Holland LX665, 1994.....	\$14,500
New Holland 783, 1989 w/Backhoe.....	\$15,900

EXCAVATORS

Kubota KX101 w/Blade.....	\$19,500
Cat E70B, 1989, 3500 hours.....	\$26,500
Hitachi EX100, 1990, 3400 hours.....	\$29,500
Cat 307, 1994, 2600 hours.....	\$32,500
Hitachi EX120-2 1991.....	\$34,500
1996 Komatsu PC-120-6E.....	\$57,500
1996 Komatsu PC-120-6E.....	\$59,500
Cat 320L, 1993, 3800 Hrs.....	\$69,500
Cat 320L, 1994, 2200 Hrs.....	\$79,500
Cat 320BL, 1996, 3600 Hrs.....	\$95,000

ROLLERS

(2) Sheepsfoot Roller.....	ea. \$4,500
Essick VR42RDT Tow Package.....	\$4,500
Dynapac CC12, 1986.....	\$12,500
I.R. ST60, 1993, 50" Smooth.....	\$19,500
Dynapac CA 15D, 1973, 66" Smooth, DD.....	\$19,500
Dynapac CA 15D, 1976, 66" pad foot.....	\$19,500
Rex SP600, 66" Smooth, 1980-82.....	\$20,000
Dynapac CA 15D, '84, 66" smooth, DD.....	\$24,500
Bomag BW 142D D.D.....	\$24,500
Bomag BW 142PD D.D.....	\$24,500
Dynapac CA25 II, 1984, 84" Drum Drive.....	\$26,500
I.R. SD100D 84" Smooth 1988.....	\$34,500

TRAILERS

1999 4 Ton Tag-a-long, 6.5x14.....	\$1,700
1999 4 Ton Tag-a-long, 6.5x16.....	\$2,300
1999 4 Ton Tag-a-long, 6.5x18.....	\$2,400
1999 4 1/2 Ton Tag-a-long, 8x19.....	\$3,750
1984 Eager Beaver 12 Ton, Electric.....	\$4,500
1994 Towmaster 10 Ton.....	\$4,900

MISCELLANEOUS

Clark American 2000 Sweeper, lpg.....	\$4,000
Puckett Bros T650B, 1988, paver.....	\$10,500
Gravely 1210B Pro Chipper DSL, 200 hrs.....	\$18,500
Euclid R-22 End Dump, 1967.....	\$21,500
Ford Tandem Rollback 1987 26' Winch.....	\$29,500