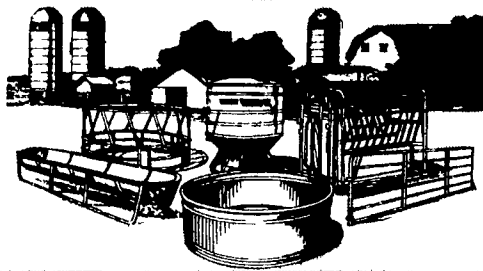


**Largest Farm
And Home Store
In The Area!**

**END OF THE
CENTURY
SALE**



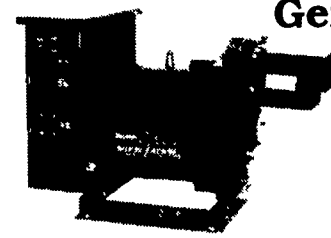
Generators

Power Take-Off Generators

Reliable standby electrical power for farm and poultry applications

Greater surge power in a compact design. New gear box ratio design operates at 1800 RPM for longer life and smoother, quieter operation.

- ±1% voltage regulation for optimized fast response to changing load conditions
- Quick disconnect plugs and easy access control panel
- Nos. 3W954 and 3W955 single phase operation. No. 3W956 single or three phase
- 5 yr. warranty on 25 KW and 40 KW
- 1 yr. warranty on 60 KW



25 KW **\$2,380**
40 KW **\$3,395**
60 KW **\$4,995**

Optional accessories PTO shaft trailer

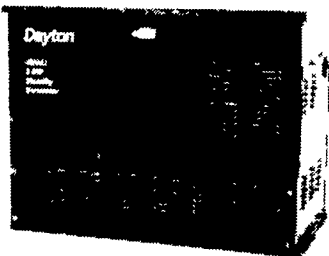
Dayton

Stand-by Generators

Keep heating/cooling systems, pumps, lighting and office equipment operating during power failures.

Engine starts and stops automatically in the event of complete power loss or brown out conditions.

- Generators include muffler, battery, rack cables and trickle charger, weather resistant, sound dampening, all metal housing
- Designed for outdoor use only as a permanently installed stand by power source
- Available 5 KW, 8 KW, 10 KW, 20 KW, 40 KW
- LP or natural gas
- Options - 100 AMP or 200 AMP automatic transfer switch



Starting at **\$4,600**

10 KW DIESEL GENERATOR SET

This is an industrial quality four pole, direct drive, diesel-powered, electric generator, designed for reliable continuous use for household or business. The unit provides both 120V and 240V 60 cycle simultaneous outputs, either direct wired or connected through the furnished outlets. 12V electric key start with battery recharge and automatic shut-down protection for low oil pressure and high temperature.

\$4,995

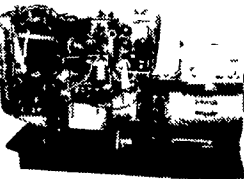
SPECIFICATIONS

Engine: 26 HP 2 Cylinder Diesel 1800 RPM

Outlets: One 240V 40 Amp Twistlock Two 120V 20 Amp Duplex

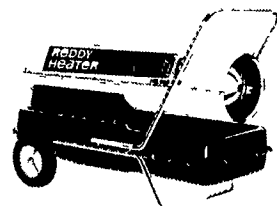
Fuel Consumption: Approximately 0.5 Gallons Per Hour @ 50% Load

In Stock. Call For More Information



REDDY HEATERS

- 200,000 BTU \$429
- 165,000 BTU w/thermostat.....\$379
- 110,000 BTU \$299
- 70,000 BTU w/thermostat. . . \$249
- 60,000 BTU. \$199
- 40,000 BTU. . . . \$139



End-of-Year Savings on Safemark Baler Twine



- Rot, rodent and insect resistant
- Knotless • Brazilian
- 7' 200' 9' 300' 16,000' in stock
- Also available poly twine 9' 900' & 20' 000'
- Call for quantity prices

Farmmaster 2 Ton Feed Bin

w/ladder and slide. Ideal for Small Application.

#790113 **\$499⁰⁰**



Storage WINTER SALE

- 425 Gal. 400220 \$199.00
- 550 Gal. 400240 \$269.00
- 1000 Gal. 400040 \$349.00
- 1500 Gal. 400410 \$429.00
- 2100 Gal. 401780 \$799.00



Mini Bulk Tanks Horizontal Leg Tanks Pickup Truck Tanks Applicator Tanks

Many other sizes in stock **NORWESCO**

Also Stocking A Full Line Of Hoses, Fittings & Quick Couplers

★Full Line Parts Dept.★
★Sell, Service & Install★

Approx. 5 mi. South of Lancaster on Rt. 272
14 Herrville Road
Willow Street, PA 17584
Ph. 717-464-3321 or
Toll Free 800-732-0053
Mon.-Fri. 6:30 am to 8 pm
Sat. 7:30 am to 6 pm
Sun. Closed



ACE Hardware

UPS Shipping Point

Not responsible for typographical errors

12/11

Officials Say DFA Small In Country, Big In City

will be determined by the product, cheese or butter, that is selling at the highest price. The use of the higher of Class III or Class IV as the price mover will net dairy farmers across the nation and additional \$410 million according to the economic impact figures of recent legislation released at the meeting. Price supports will add \$2.7 billion, market loss payments, \$125 million, and using option 1-A rather than USDA's proposed 1-B price mover will add \$147 million to farmers milk checks.

"We had an outstanding year at the national legislative level," Hanman said. "With only 90,000 dairymen left in the nation, there is no justification for being able to get what we were able to get at the national level. With claims to having representation in the inner decision making circle, Hanman listed these recent legislative activities and benefiting dairy farmers:

- Extension of dairy price supports
- Establishment of market loss payments
- Authorized use of the highest of the Class III or Class IV price as the milk price mover

- Approval of Option 1-A instead of the national secretary's proposed Option 1-B

- Extension of New England Compact

- Forward pricing contracts for producers and cooperatives

Modifications of Federal Orders will consolidate the current 31 orders into 11 orders. Four classes of milk will be designated with class IV as butter and dried milk product. Producers will be paid on the basis of butterfat, protein and other solids with a producer price differential.

DFA project average milk price for 1999 to be \$12.43 per hundred lbs with January at 16.27 and November and December at \$9.79. The average is down \$1.77 from the 1998 average of \$14.20. In the year 2,000 the average price is forecast at \$11.78 with a low of \$10.53 in June to a high of \$13.34 in December.

DFA has members in 45 states, owns and operates 34 dairy manufacturing plants in 15 states, and is involved in 13 joint ventures that operate 61 fluid milk, cultured, and ice cream plants throughout the continental US and Hawaii. DFA now

markets more than 36.4 billion pounds of milk annually that is produced by 24,718 farm family members. They live on 18,038 farms. Sales are projected to reach \$7.9 billion in 1999.

DFA officials were to be in Sayre Tuesday night, Kent Miller's Farm at Arcade, NY at noon on Tuesday, and in Saratoga Springs, NY Tuesday night. More than 800 dairy farmers attended the four meetings.

Shocking Drop In BFP

In a related story this week, USDA announced a shocking drip in BFP. See Ken Bailey's report from Penn State on the Futures Market Page A16.



WB95PZ Zimmerman Water Bowl

The Unlimited Water Supply For Your Cows!



Now you can give your cows the water they need to produce more milk. With the Zimmerman Water Bowl, you can do that no extra cost.

The bowls are designed to conform to known federal and local codes. They are installed properly.

They are not designed to be used when the cow has a drink. This is a continuous supply nature intended for the cap fast recovery and the Zimmerman Valve. It is the way you water your cows.

All bottom fill bowls are designed to be installed in new or remodeled facilities or in most existing barns on main stall side!

Low maintenance noncorrosive Delrin valve is self cleaning & simple to operate.

- 12" in diameter & 8" deep.
- 3 gallon capacity- 6 times that of other bowls!
- Fast recovery- 3 gallons per minute at 40 psi.
- PVC construction- guaranteed unbreakable, inhibits bacterial growth.
- With nonrestrictive splash guard.
- Cleaner- water fill located at bottom.
- Bottom drain- for easy cleaning.
- Adjustable water level.

MORE WATER MEANS MORE MILK...NATURALLY!



Heavy duty steel clamp & mounting bracket totally supports bowl.



Added Value With Our 2 Coat Process!

- 1 Five step metal preparation, including iron phosphate conversion coating, to enhance adhesion & prevent undercoat corrosion
- 2 Zinc rich epoxy powder undercoat
- 3 TGIC polyester powder top coat, baked at 400° to fuse costs forming a cross link molecular bond



Paul B. Zimmerman, Inc.

295 Woodcorner Rd. • Lititz, PA 17543 • 717/738-7365

1 mile West of Ephrata

Call or write for additional information & the name of your nearest dealer

Hours Mon-Fri 7-5
Sat 7-11