

**Lebanon Valley**

**Livestock**

Fredericksburg, PA

December 7, 1999

Report Supplied by Auction

STEERS: CHOICE 2-3 1065-1265 LBS. 108.00-70.25; SELECT 1-3 67.75, STANDARD 1-2 62.00.

HOLSTEIN STEERS: CHOICE 2-3 1440-1640 LBS. 60.00-60.75; SELECT 1-2 57.00-59.25; STANDARD 1-2 50.00-54.00.

HEIFERS: CHOICE 2-4 1220-1245 LBS. 67.00-69.00.

COWS: BREAKERS 75-80% LEAN 41.00-42.50; BONERS 80-85% LEAN 39.00-40.75; LEAN 85-90% LEAN 37.50-38.75; SHELLS DOWN TO 27.50-36.00.

BULLS: YG#1 2530 LBS. 50.75; YG#2 1760 LBS. 43.00.

FEEDER CATTLE: STEERS 240-370 LB. HOL. 57.00-60.50; HEIFERS 490-505 LB. BEEF 57.00-62.50; BULLS 950 LBS. 44.50, 450 LBS. 50.00-60.00.

CALVES: STANDARD AND GOOD 75-90 LBS. 55.00-80.00, UTILITY 70-85 LBS. 30.00-40.00.

FARM CALVES: HOLSTEIN BULLS #1 95-115 LBS. 150.00-162.50, #2 95-15 LBS. 98.00-145.00; HOLSTEIN HEIFERS #1 95 LBS. 265.00, #2 75 LBS. 142.00;

BEEF TYPE BULLS AND HEIFERS 80 LBS. 78.00.

HOGS: 45-50% 280 LBS. 35.75, 40-45% 260 LBS. 33.00.

SOWS: US#1-3 500-600 LBS. 24.00-25.75; MED. 535 LBS. 17.00-23.00.

SHEEP: CHOICE 77 LBS. 91.00; 105-110 LBS. 69.00; SLAUGHTER SHEEP 170-220 LBS. 34.00-47.00.

GOATS: MED. 70.00; SMALL 23.00-30.00.

**Grantsville**

**Livestock**

Grantsville, Maryland

Report Supplied by Auction

Saturday, December 4, 1999

STOCK BULLS AND STEERS 200-500 LBS. 50.00-100.00.

STOCK HEIFERS 45.00-90.00. SLAUGHTER STEERS GOOD TO CHOICE, UP TO 65.00; MEDIUM TO GOOD 45.00-58.00.

HOLSTEIN STEERS GOOD 36.00-52.75, LIGHT 35.00-55.00.

SLAUGHTER HEIFERS GOOD TO CHOICE 56.00-60.00, MEDIUM TO GOOD 50.00-55.50.

BULLS: HEAVY 35.00-50.00, LIGHT 35.00-54.00.

COWS: UTILITY HOLSTEINS 32.00-40.00, CANNERS 25.00-33.00, CULLS 22.00 AND DOWN.

BOB CALVES 30.00 AND DOWN.

HOLSTEIN BULL CALVES RETURN

TO FARM: 90-120 LBS. UP TO 109.00.

HOLSTEIN HEIFER CALVES

RETURN TO FARM UP TO 155.00. BEEF X CALVES RETURN TO FARM, UP TO 110.00.

HOGS: TOP QUALITY UP TO 40.00, HEAVY UP TO 40.00, LIGHT 20.00-32.00, FEEDER PIGS BY THE HEAD UP TO 25.00.

SOWS: 15.00-30.00.

MALE HOGS: 5.00-20.00.

LAMBS: 70-85 LBS. UP TO 115.00, 85-125 LBS. UP TO 95.00, 30-60 LBS. UP TO 130.00, CULLS UP TO 65.00.

SHEEP: UP TO 40.00.

GOATS: ALL BY THE HEAD, LARGE 60.00-135.00; MEDIUM 40.00-75.00; SMALL 20.00-50.00.

NO SALES SAT., DEC. 25 AND SAT., JAN. 1.

**New Holland**

**Dairy**

New Holland Sales Stables

New Holland, Pa.

Wednesday, Dec. 8, 1999

Report Supplied By Auction

138 DAIRY COWS, 172 HEIFERS, 15 BULLS. MARKET STEADY.

LOCAL FRESH COWS 375.00-1300.00.

LOCAL SPRINGERS 635.00-1325.00.

BETTER FRESH COWS: 1500.00-1600.00.

SPRINGERS LARGE

1200.00-1360.00, SMALL 485.00-1075.00.

**Morrison Cove**

**Livestock**

Martinsburg, Pa.

December 6, 1999

Report Supplied by Auction

CATTLE: 149.

STEERS CHOICE 66.00-72.25; GOOD 62.00-65.50.

HEIFERS: CHOICE 65.00-71.50; GOOD 60.00-64.75.

COWS: UTILITY & COMMERCIAL 35.50-43.00, CANNER AND LOW CUTTER 15.00-34.50.

BULLOCKS: GOOD & CHOICE 43.00-49.00.

BULLS: YIELD GRADE NO. 1

38.00-49.00.

FEEDER CATTLE: STEERS 59.00-84.00; BULLS 53.00-79.00; HEIFERS 49.00-71.00.

CALVES: 126. PRIME, NO MKT. TEST; CHOICE 69.00-81.00; GOOD 61.00-68.00, STANDARD 20.00-38.00; HOLSTEIN BULLS 90-130 LBS. 45.00-110.00; HOLSTEIN HEIFERS 90-130 LBS. 125.00-250.00.

HOGS: 268. US NO. 1-2 36.50-37.50; US NO. 1-3 34.00-36.00.

SOWS: US NO. 1-3 18.00-32.00.

BOARS: 6.50-18.00.

FEEDER PIGS: 46 HEAD. US#1&3 20-50 LBS. 14.00-23.00.

SHEEP: 54. CHOICE LAMBS 100.00-110.00, GOOD LAMBS 90.00-100.00, SLAUGHTER EWES 31.00-39.00.

GOATS: 44.00-155.00.

**Greencastle**

**Livestock Auction**

Special Feeder Cattle Sale

Friday, December 3, 1999

Greencastle, PA

769 HEAD.

STEERS: 200-300 LBS. 80.00-110.00; 300-500 LBS. 80.00-106.00; 500-700 LBS. 78.00-95.50; 700-900 LBS. 68.00-80.00; 900-1000 LBS. 60.00-69.50.

HOLSTEIN STEERS: 200-400 LBS. 61.00-69.50; 400-500 LBS. 57.00-64.00; 500-600 LBS. 55.00-63.00; 600-800 LBS. 53.00-57.00; 800-900 LBS. 50.00-57.00; 900-1000 LBS. 47.00-54.00.

HEIFERS: 200-300 LBS. 69.00-86.50; 300-500 LBS. 71.00-86.50; 500-700 LBS. 69.00-85.00; 700-900 LBS. 65.00-76.00; 900-1000 LBS. 55.00-65.00.

BULLS: 200-300 LBS. 77.00-104.00; 300-500 LBS. 75.00-102.00; 500-700 LBS. 68.00-80.50; 700-900 LBS. 59.00-69.00; 900-1000 LBS. 45.00-52.50.

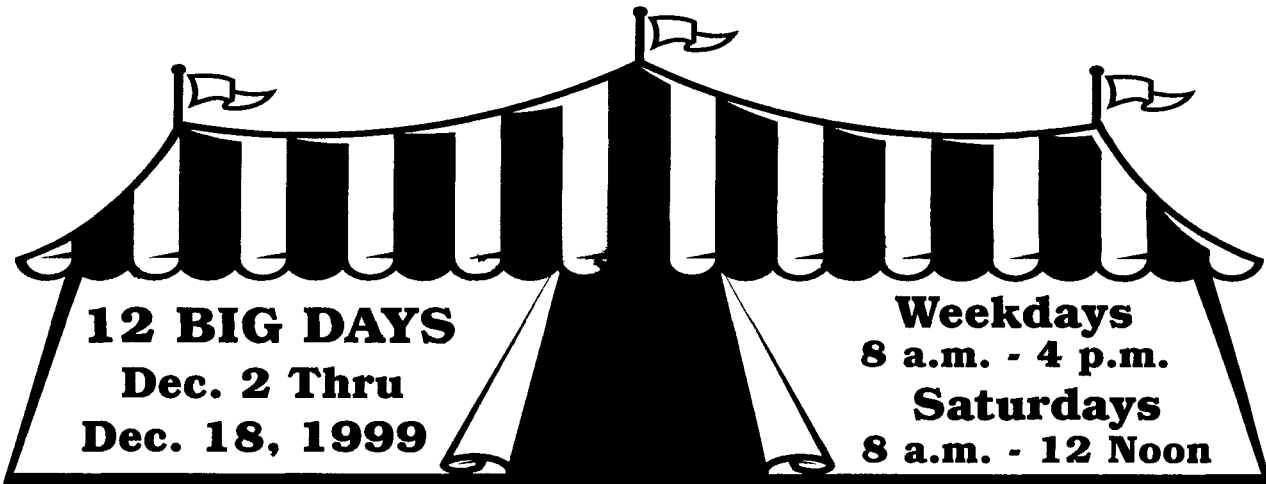
HOLSTEIN BULLS: 500-900 LBS. 48.00-55.00.



**Welcome To Fisher & Thompson's**  
**Fourteenth Annual**



**OPEN HOUSE**



**See the all-new Analyzer**

It measures milk weights, SCC, Butterfat & Protein, and Temperature

10% Discount  
On Most  
Equipment &  
Supplies

For every \$350 of purchases  
(or put on account toward future  
purchases), receive one ticket  
for the Grand prize Drawing

Vacuum  
Pump & Claw  
Specials

Spectacular Prize Drawings

Refreshments Available

**Grand Prize**

(Choose 1)

- 4-Day Vacation Package for 2
- 3 Bucket Milkers or 1 Sputnik
- 4 Analyzers (Milk Meters)
- Holstein Cow

**2nd Prize**

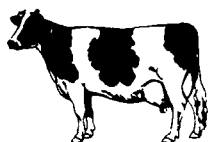
\$750.00  
Fisher &  
Thompson  
Gift  
Certificate

**3rd Prize**

Dewalt  
Tool Kit  
(18v Drill,  
Saw &  
Flashlight)

**4th Prize**

Stewart  
Cow Clipper  
-OR-  
Udder  
Singe



**WESTFALIA**



**FISHER & THOMPSON, INC.**

DAIRY & MILKING EQUIPMENT SALES & SERVICE

15 NEWPORT RD., LEOLA, PA 17540

717-656-3307

**AG-BAG**  
**INTERNATIONAL LTD**

**Year-End Specials**

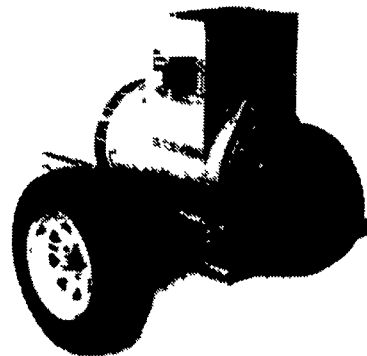
Call us for year end specials  
on NEW and RENTAL  
Ag-Baggers.

Place your order now and  
save big \$\$\$.



AGRI-SERVICE LLC/  
Interstate Dairy Equipment  
800-332-6559 301-271-7344

**Katolight Generators**  
**5 Year Warranty**



25 - 135 KW PTO Units.  
Call us for **Lowest** prices on Top  
of the line Katolight generators.

All sizes in stock.

**J. Swantak Inc.**  
**Oneonta, NY**  
**(800) 842-9228**