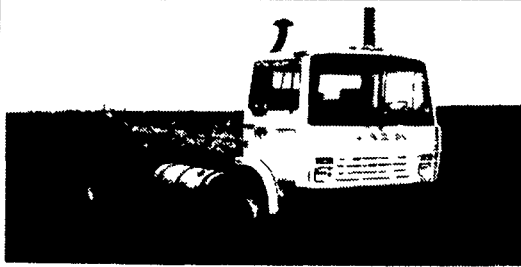


(2) 1989 T 800 Kenworth Tractors, Mint Cond. Very Low Mileage. 350HP CAT Eng. Call Chuck at Dietrich's Milk Products for More Information. 610-921-5686.



MS 250 Mack 93
Air Brake, 33,000 GVW, AC
814-629-9233

1997 Ford F-250 Ext. Cab
Fully Loaded, Dsl, 4WD, 20,000 Mi., Clean, Call Anytime Serious Inq. Only
717-684-5906



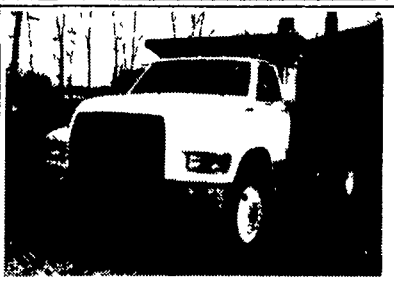
1988 INTERNATIONAL S-1700
DT-466 5x2 Transmission, Air Brakes, Double Frame, 29,000 GVW, P. Steering
CALL 717-848-4155 - Price \$9,500

- Paint Booth 14'x24'x8' \$1,600
- Large Quantity Pallet Racks & Heavy Duty Utility Shelving
- 1986 IH Truck Tractor \$7,000
- 1983 GMC Tandem Truck Tractor \$3,500
- 48' Fruehauf Dry Van..... \$4,000
- (10) 28' Fruehauf Dry Vans. \$1,500
- (5) Todco Single Axle Converter Dollies ... \$700
- Cummins N14 Engine (20,000 miles on overhaul)..... \$4,000
- (5) 45' Storage Trailers..... \$1,500

443/838-5539 or 410/764-6935
Page 410/995-7729

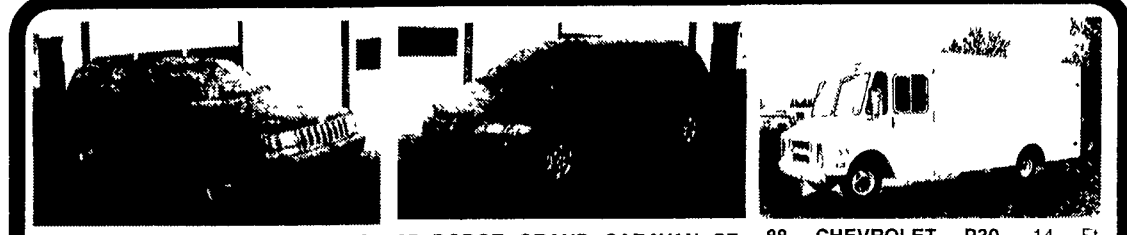


'82 VOLVO ROLL OFF
270 Diesel, 8 Spd., 40,000 Rears



'95 FORD DUMP
8.3 Diesel, 5 Spd., 2 Sp. 33,000 GVW, 57,000 Miles

410-272-6807



93 JEEP GRAND CHEROKEE LAREDO, 4 Dr 4x4, 4.0L FI 6 Cyl AT/OD, AC Airbag, PW PDL Tilt, Cruise, AM-FM Cass Alloy Wheels Green 104 000 Miles Was \$8 995 Now **\$7,995**

97 DODGE GRAND CARAVAN SE, Twin Doors 3.3L FI V6 AT/OD AC PW PDL Tilt Cruise AM-FM Cass 7 Pass Privacy Glass Blue 87 000 Miles 5 Available **\$10,900**

88 CHEVROLET P30, 14 Ft Aluminum Step Van 5.7L FI V8 AT Twin Doors Dual Seats PS PB Dually Rear Roll Door White 112 000 Miles White **\$6 800**



95 CHEV G20 MARK III HI TOP CONVERSION VAN, 5.7L FI V8 AT/OD AC Airbag PW PDL Tilt Cruise AM/FM Cass TV/VCR 4 Captain Chairs & Rear Sofa Bed Black w/Mauve Interior 81 000 Miles **\$10,900**



88 FORD F350 BUCKET TRUCK 5.8L FI V8 AT PS PB Utility Body High Reach Bucket Onan Generator 11 000 GVWR Silver 46 000 Miles Ready To Work 4 To Choose From **\$7,900**



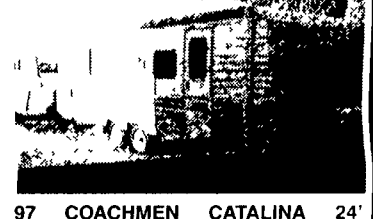
96 CHEVROLET LUMINA, 4 Dr 3.1L FI V6 AT/OD AC PW PDL Tilt Cruise Dual Airbags AM/FM Cass Black 67 000 Miles 3 Lumina's To Choose From **\$7,995**



98 LAYTON 25' TRAVEL TRAILER, Sleeps 6, Front Master Bedroom, Sofa, Dinette, Rear Bath, Stove, Microwave, Refer, Frez, AC Heat, Awning, Easy To Tow **\$8,900**



96 CITATION 35' TRAVEL TRAILER, W/SLIDE OUT, Rear Master Bedroom Large Bath, Front Kitchen w/Hardwood Stove, Microwave Refer Frez Sofa Bed, Free Standing Dinette, Twin Doors Central AC & Heat, Awning Would Make A Great Vacation Home **\$13,900**



97 COACHMEN CATALINA 24' TRAVEL TRAILER, Sleeps 4 Rear Master Bedroom Sofa Dinette Stove Microwave Refer Frez AC Heat Awning, Twin Doors Easy To Tow **\$8,900**

FINANCING AVAILABLE

CARS

- 97 HONDA CIVIC LX \$11,500
- 97 DODGE INTREPID \$9,995
- 97 CHEVROLET LUMINA \$8,900
- 96 CHEVROLET LUMINA \$7,995
- 96 MITSUBISHI GALANT S, 4DR \$7,995
- 95 DODGE AVENGER, 2DR, RED \$8,995
- 95 DODGE INTREPID ES, 42K MILES \$8,500
- 95 CHRYSLER NEW YORKER \$7,995
- 95 CHRYSLER CIRRUS LX \$8,500
- 95 OLDS CIERA SL, 4DR \$6,995
- 95 DODGE STRATUS, 4DR \$5,695
- 95 CHEVROLET LUMINA, 4DR \$5,995
- 95 SATURN SL1, 4DR, AT/OD, AC \$6,500
- 95 DODGE INTREPID, 4DR, 50K MILES \$7,895
- 95 VW JETTA CELEBRATION ED, 4DR, AT \$8,500
- 94 VW JETTA GL, 4DR, 5SPD, AC \$8,995
- 94 TOYOTA COROLLA DX, 4DR \$6,995
- 94 OLDS CUTLASS SUPREME, 2DR \$6,500
- 94 PONTIAC GRAND AM SE, 4DR, V6 \$5,800
- 93 BUICK LESABRE \$6,995
- 93 SATURN SL2 TOURING, 4DR, 5SPD, AC \$5,900
- 91 EAGLE TALON, 2DR, AT \$4,995
- 90 HONDA ACCORD DX, 4DR, 5SPD \$4,800
- 90 CHEV CAVALIER, 2DR, AT, AC \$1,995
- 87 BUICK CENTURY, 2DR, V6 \$1,895

SPORT UTILITIES

- 96 CHEV SUBURBAN LS, 4X4, LOADED \$23,500
- 96 CHEV BLAZER LT, 4DR, 4X4, LOADED \$16,900
- 96 FORD EXPLORER XLT, 4DR, 4X4, LOADED \$15,900
- 96 JEEP GRAND CHEROKEE LAREDO, 4X4 \$15,900
- 94 CHEVROLET S10 BLAZER LT, 4DR, 4X4 \$10,900
- 94 FORD EXPLORER XLT, 4DR, 4X4, LOADED \$9,995
- 93 JEEP GRAND CHEROKEE LAREDO, 4DR, 4X4 \$8,995
- 88 FORD BRONCO II, 2DR, 4X4, V6, AT \$2,800

VANS

- 97 FORD E250 CARGO VAN, V8, AT, AC WHITE \$16,500
- 97 DODGE GRD CARAVAN SE, TWIN DOORS, LOADED \$10,900
- 96 DODGE GRD CARAVAN SE, TWIN DOORS, LOADED \$14,900
- 96 DODGE GRD CARAVAN SE, TWIN DOORS, LOADED \$14,500
- 96 DODGE GRD CARAVAN LE, TWIN DOORS, LOADED \$13,995
- 96 PLY GRD VOYAGER SE, TWIN DOORS, LOADED \$12,500
- 96 FORD E350 CARGO VAN \$11,800

TRUCKS

- 95 CHEV G20 MARK III HI TOP CONVERSION VAN \$10,900
- 95 FORD E250 CARGO VAN, SHELVES, WHITE \$9800
- 93 FORD E250 CARGO VAN, 47K \$11,500
- 93 CHEV G20 CARGO VAN, V6, AT, AC WHITE \$6 500
- 92 DODGE B350 15 PASS VAN, DUAL AC & HEAT \$7,995
- 92 FORD E150 CHATEAU, 7 PASS, LOADED \$7 900
- 91 CHEV ASTRO CL EXT AWD, LOADED BLACK \$6,500
- 91 PLYMOUTH VOYAGER, V6, AT, AC, 7 PASS, GRAY \$4,500
- 90 PLYMOUTH VOYAGER SE, V6, AT, 7 PASS \$2,995
- 88 CHEV P30 16 FT STEP VAN \$6 800
- 87 FORD E350 CLUB WAGON XL 12 PASS VAN 67K MILES \$4 800

CAMPERS

- 98 CHEV S10 ZR2, 4X4, EXT CAB, LOADED, BLACK \$18,900
- 98 FORD F150 XL PU TK, V8, AT, AC, TOPPER \$14,500
- 95 DODGE RAM 1500 PU TK, V8, AT, AC \$7,995
- 94 CHEV C2500 CHEYENNE EXT CAB, 2WD V8, AT, AC \$7,995
- 94 FORD RANGER SPLASH, 5SPD, AC \$6,500
- 93 CHEV C1500 SILVERADO, SHORT BED, 5 SPD, V6, LOADED \$7,900
- 92 CHEV C1500 SILVERADO PU TK, 2WD V6, 5SPD, AC, MAROON \$6 500
- 90 CHEV C3500 12 FT TRK W/ATTIC, V8, AT, WHITE \$6,500
- 89 FORD F350 UTILITY BODY W/HIGH REACH BUCKET \$8 900
- 88 FORD F350 UTILITY BODY W/HIGH REACH BUCKET \$7,900
- 88 DODGE RAM 350 STAKE BED \$4,995
- 86 FORD F350 UTILITY BODY W/HIGH REACH BUCKET \$6 950
- 86 FORD F350 UTILITY BODY W/HIGH REACH BUCKET \$6,950
- 98 LAYTON 26' CAMPER, SLEEPS 6 \$8,900
- 97 COACHMEN 24' CAMPER, SLEEPS 4 \$8,900
- 96 CITATION 35 CAMPER W/ SLIDE OUT, SLEEPS 4 \$14,800
- 93 PALOMINO POP UP TK CAMPER \$2,800
- 92 INSBROOK 35 CAMPER W/SLIDE OUT, SLEEPS 6 \$9 500
- 90 CHEV SHASTA 23' CLASS C MOTOR HOME \$12 800

BARKUS & SONS

TRUCK CENTER, INC.

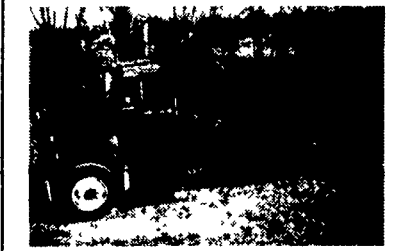
321 Maple Avenue, Horsham, PA 19044
215-674-2016 Fax: 215-674-2059



1994 GMC W-4, 14 250 GVW Diesel Automatic 114 000 Miles Brand New 14 Ft Rugby Electric Dump Stake **\$18,990**



1988 FORD F700, 20 200 GVW V8 Gas 5 Speed 102,000 Miles 20 Ft Stake w/Liftgate **\$6,990**



1994 FORD L9000, 31 700 GVW, Cummins L10-270 HP, 9 Speed 297 000 Miles, 24 Ft Flatbed **\$24,900**



1996 GMC TANDEM DUMP, 14 Ft, 16,000 lb Front, 40,000 lb Rear Cat 3116 - 275 HP, 68,000 Miles **\$49,900**

LEFEVER BROS. CHEVROLET CHEVY TRUCKS GEO

YOUR DIRECT LINE TO GENUINE GM PARTS

(800) 533-3837

When you call the number listed above, you'll reach our wholesale parts specialists, who can help you keep your GM repair work moving quickly

- Specializing in GM Medium Duty Trucks, Current and Obsolete.
- \$500,000 Parts Inventory.
- Parts Locator for Those Hard to Find Items.
- We Ship Anywhere, Local Delivery Available.
- Experienced, Knowledgeable Personnel.

Mon, Tues, Thurs, Fri
7 30 a.m - 4 30 p.m
Weds 7 30 a.m - 8 30 p.m
Major Credit Cards Accepted

(717) 432-9697
Quality Dealer Since 1921

406 U.S. Rt 15, Dillsburg, PA 17019



We want your business.



Rt. 322 & Clearview Road, Clay, Lancaster Co., PA **717-738-2242**