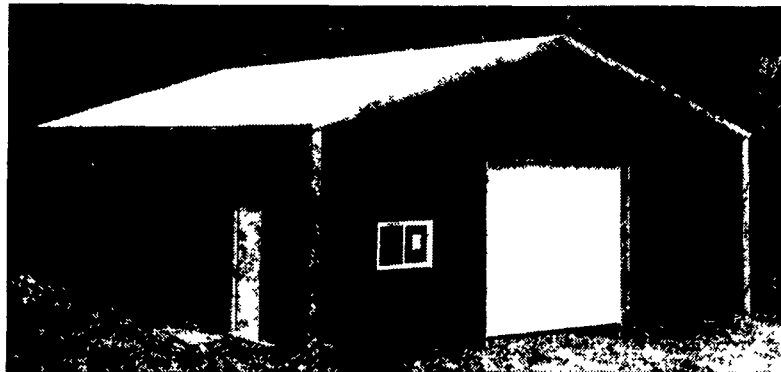


Pioneer Pole Buildings, Inc.

Pottsville, PA

Toll Free 1-888-448-2505



30X32X10

\$6,900

INSTALLED!!

1-10W x 10H Sliding Door or

1-9W x 8H Overhead Door

(Your Choice)

30x64x10

\$12,499

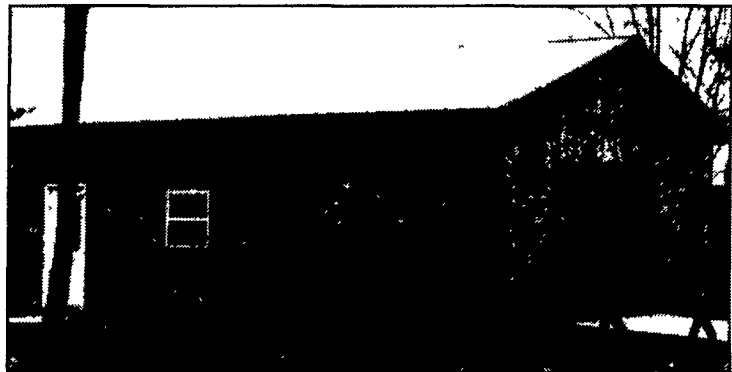
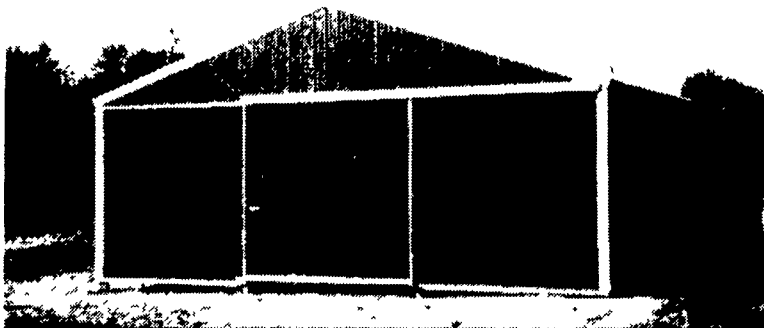
INSTALLED!!

1-10W x 10H Sliding Door

or

1-9W x 8H Overhead Door

(Your Choice)



24X24X8

\$4,900

INSTALLED!!

1-16Wx7H Overhead Door

3'x6'8" 6-Panel Steel Entry Door.

25 year warranty Everlast painted steel (your choice of color on roof, sides, trim).

Steel is G-100 painted and heat roll-formed by Everlast Inc. the best known roofing made.

40# per sq. foot snow load on trusses. 2x6 top and bottom chord.

All materials and labor to construct the building.

All 3
Include:

Member PA Builders Association
Member National Frame Builders Assoc.
Company Owned Crews

Top Quality Workmanship
Top Quality Materials
Quick Construction Date



Financing Available

Other Sizes Available



Call For Free Literature or See us at www.pionpole.com

Koser Building Materials

FOR YOUR HOME IMPROVEMENT NEEDS

LOCATED NORTH OF ELIZABETHTOWN
OPEN MON-FRI 8:10-6 SAT 8:10-3

- Kitchen Cabinets
- Plywood & Waterboard
- Asphalt Roofing Shingles
- 1-1-11 Siding
- GP Insulation
- Railroad Ties
- Shutters
- Replacement Windows
- Vinyl Siding

**Exterior
Pre-hung
6 Panel Doors
\$99**

717-367-0283

GLENWOOD METALS LLC

CUSTOM CUT METAL ROOFING & SIDING

29 gauge - 15 colors
Painted, Galvanize &
Galvalume

26 gauge commercial -
12 colors Painted
& Galvalume

See Us At
The Keystone
Farm Show
Jan. 4, 5, 6
York, PA
Booth #165

26 Ga. & 24 Ga.
Standing Seam Panels

.018 Mill Finish & White
Aluminum

Trims - Screws - Nails
to match colors

265 E. Meadow Valley Rd.,
Lititz, PA 17543
717-626-9674
800-582-9956
717-627-6892 - Fax

Compare the Savings...

Winter Specials on Custom Pole Buildings!



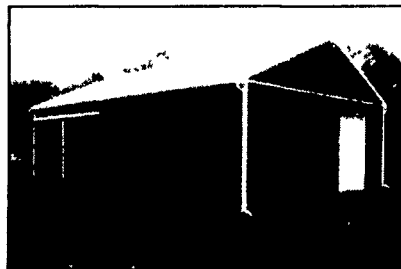
24x24x8 \$5,500

- (1) 3'x6'8" six panel entry door
- (1) 16'x7' insulated raised panel overhead door



28x32x10 \$7,650

- (1) 3'x6'8" six panel entry door
- (2) 9'x8' insulated raised panel overhead doors



40x60x12 \$16,000

- (1) 3'x6'8" six panel entry door
- (1) 12'x10' overhead door
- (1) 12'x11' sliding door



50x96x14 \$27,200

- (1) 3'x6'8" six panel entry door
- (1) 20'x14' split sliding door

COMPARE OUR SAVINGS - OUR PRICES INCLUDE MATERIALS, LABOR, DELIVERY,
APPLICABLE TAXES AND DESIGN PLANS. CALL TODAY - FREE ESTIMATES
AND BROCHURES, WITH FINANCING AVAILABLE!

- Custom pole buildings - residential, agricultural, commercial, & equine
- Company-owned construction crews
- Maintenance-free painted steel with 25 year warranty - your choice of color on roof sides, and trim!

Visit our
web-site today!

www.conestogabuildings.com

10 Years of Building Excellence!
CONESTOGA Buildings
202 Orlan Road, New Holland, PA 17557
1-800-544-9464