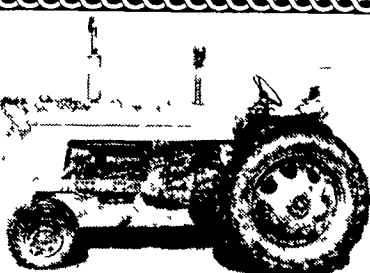




1996 JD 8400 MFWD, Duals,  
Front Weights, 2800 Hrs., Real Clean  
2 Year Warranty \$72,900  
717/529-2512 (No Sunday Calls)



Farmall 560 dsl 1960 Fast Hitch, Good T A  
needs paint \$3,500  
Farmall MD dsl 1950 factory WF \$3,000  
Farmall W9 Gas 1949 Exc Needs Paint \$3,500  
Farmall Super M-TA Gas Need Work \$2,850  
**CALL SCOTT 908-782-7658**

Looking for Farm Equipment?  
[www.TractorSmart.com](http://www.TractorSmart.com)

**THE LUCKNOW MIXER WAGON**



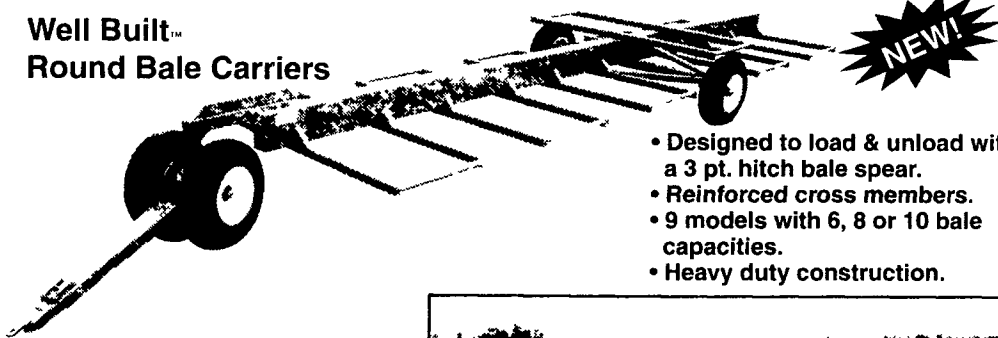
Simply the best value and the best in  
quality on the market today.

**Call M.M. Weaver & Son**  
Leola, PA • (717) 656-2321

**Well Built™ to Handle Your Hay**

Trust Your Most Important Forage Crop to Stoltzfus Mfg.

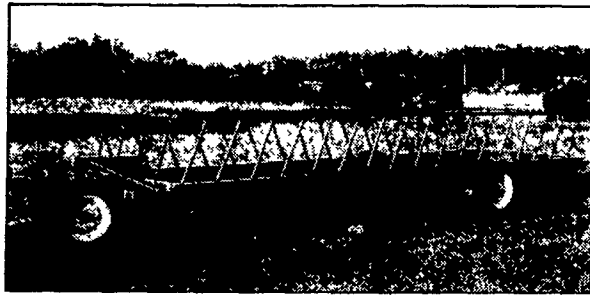
**Well Built™  
Round Bale Carriers**



- Designed to load & unload with a 3 pt. hitch bale spear.
- Reinforced cross members.
- 9 models with 6, 8 or 10 bale capacities.
- Heavy duty construction.

**Well Built™ Feeders:**

- Built tough for long life!
- Available in a variety of lengths.
- Adjustable slant bar or self-locking head locks.
- Ideal for cattle in either feedlots or meadows.



Shown Well Built™ Slant Bar Feeder

Gates • Slant bar Sections • Head locks • Gutter grates



For a free brochure or more information call 610/273 3603

540 White School Rd  
Honey Brook, PA 19344  
610/273-3603

156 Pompey Hill Rd  
Stoystown, PA 15563  
814/893-5086

**DEALER INQUIRIES INVITED • CUSTOM WAGONS A SPECIALTY**

**LEHIGH AG EQUIPMENT, INC**



**PRE-OWNED EQUIPMENT**

**TRACTORS**

JD 6200 OPEN STATION, 2WD, 66 PTO HP	\$20,000
JD 9100, 1382 HRS, 260 HP, 4 SCV, 20.8x38 RADIAL TIRES	\$78,000

**CORN COMBINES/HEADS**

(2) JD 9500 CORN COMBINES, 1994, W/CHOPPER, 1310 SEPARATOR HRS., 1335 SEPARATOR HRS.	Choice \$86,000
JD 9500 CONTOUR MASTER, GREEN STAR	\$91,000
JD 6620 TITAN II SIDEHILL DIAL-O-MATIC	\$39,500
JD 216 FLEX HEAD, DIAL-A-MATIC	\$5,495
JD 643 CORN HEAD, OIL BATH, LOW TIN	\$8,500
JD 643 CORN HEAD, OIL BATH, LOW TIN	\$10,900
JD 643 CORN HEAD, OIL BATH, LOW TIN	\$7,900
JD 918 FLEX HEAD, CONTOUR MASTER, HYD FORE & AFT, POLY	\$10,500
JD 915 FLEX HEAD, COMPLETELY REDONE	CALL

**PLANTERS/DRILLS**

JD 450 12 FT., 7 1/2" SPACING, PRESS WHEELS	\$5,500
JD 450 32' FOLDING DRILL, 54 X 7 5/8	\$14,995
JD 7000, 6 ROW, CONS., DRY FERT. UNIT COULTERS	\$7,000

**HAY/FORAGE EQUIPMENT**

JD 1219 MOCO, EXCELLENT ROLLS	\$4,200
JD 2 ROW WIDE CORNHEAD	\$500
TRIUMPH 6 FT. SICKLE BAR MOWER, HYD. DRIVE PTO PUMP W/RESERVOIR	\$995

**TILLAGE**

JD 635 DISC 20 1/2" FOLDING REAR HITCH/HOSES, 22" BLADES	CALL
UNVERFERTH ROLLING HARROW, 12' MAIN FRAME 20 FT WING FOLD, PULL TYPE, DOUBLE BASKET, 46" WINGS, DUAL WHEELS EACH SIDE, LIKE NEW	\$4,000
BEAR CAT 12 ROLLER HARROW, EXCELLENT ROLLS	\$2,300

**LAWN & GARDEN TRACTORS**

JD 318 50" DECK, 646 HRS, 5 HP, COLLECTION SYSTEM	\$3,199
JD GX70, RIDER W/MULCH KIT	\$895
JD 111 GEAR 38" DECK W/BAGGER	\$599
JD LX178, 38" DECK, BAGGER 1997	\$3,199
JD 160 38" DECK	\$849
JD 130 30" DECK, BAGGER	\$995
JD STX38, 5-SPEED, 1994	\$1,299
JD STX46 HYDRO 1997	\$1,999
JD LX172, 14 HP 38" MOWER	\$1,795
JD GT 242, 38" DECK	\$2,199
KUBOTA T1400H 40" DECK, HYDRO, BAGGER & MULCH KIT	\$1,895
CUB CADET 1105, 11 HP, 36" DECK	\$895
JD 165 HYDRO, 38" DECK	\$995
JD 185 16" DECK, HYDRO	\$1,499
SIMPLICITY BROADMOOR HYDRO, 38" DECK, MULCH KIT	\$1,295
TROY-BILT MULCHER 13 5 HP, HYDRO	\$1,449
MIDDLEWORTH ZERO TURN MOWER, 46" DECK	\$1,499
54 HYD ANGLE FRONT BLADE, FITS JD 420, 430	\$695

**WALK-BEHIND MOWERS**

HONDA 215 5HP, 21", HYDRO, REAR BAGGER OR MULCH (LIKE NEW)	\$495
JD 14SZ 21" W-BAGGER	\$449

**COMMERCIAL MOWERS**

JD F1145, 72", 4WD, DIESEL	\$12,995
----------------------------	----------

**SNOWBLOWERS**

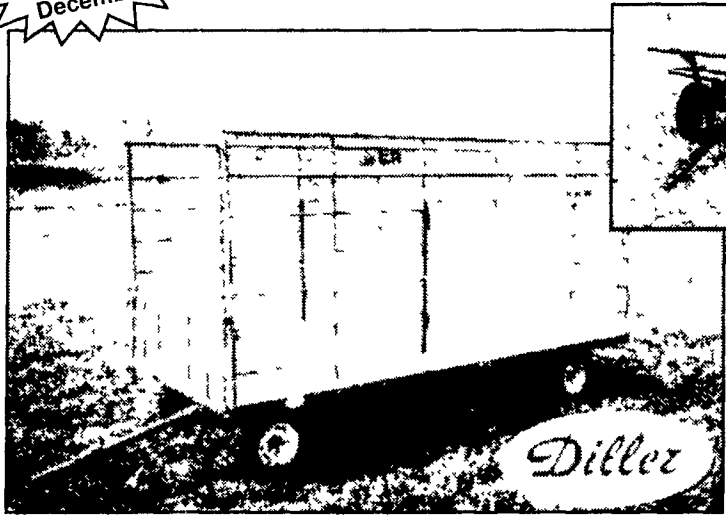
SIMPLICITY 820 SNOW BLOWER, 2-STAGE, ELECT START, ALMOST NEW	\$995
--	-------

Ruppville Road (Off Old 22 near Kuhnsville and Fogelsville), Allentown  
HOURS: Mon.-Fri. 7:30 AM to 5:30 PM; Sat. 7:30 AM to 3:00 PM

**(610) 398-2553**  
**(800) 779-3616**  
**fax (610) 398-0650**



**Wagon Built To Last**  
Ask Our Customers  
Buy Now for Spring Delivery  
10% Discount on All Cash Sales in December



- Round Bale Carrier**
- Rugged All Steel Construction
  - Adjustable 2 1/2" Pipe Cross Member
  - Cross Members Tilted Inward
  - Lengths 16'-30'

**DESIGNED TO MEET YOUR NEEDS FEATURING:**

- All steel bed frame - schedule #40 pipe side racks
- Sides easily removed - Side gates open under pressure
- Treated lumber flooring - screwed down
- Call For Free Literature
- Formed steel side rails - steel bumper
- Rear gate swings 270° either way
- Standard sizes: 8x16, 8x18, 8x20, 9x18, 9x20
- Also just side racks available



**EDENVILLE EQUIPMENT**

Chambersburg, PA 17201 • (717) 369-2691 or 1-800-523-8002

**Or Call The Dealer Nearest You**

Landis Bros.  
Manheim, PA  
1-800-524-3276

Ceresville New Holland  
Frederick, MD  
1-800-331-9122

Baker Farm Equip.  
Commodore, PA  
724-254-6400

Carlyle & Martin  
Hagerstown, MD  
301-733-1873

Barndt Tractor  
Ottsville, PA  
215-795-2281

Lehigh Ag Equipment  
Allentown, PA  
1-800-779-3616

Umbergers of Fontana  
Annville, PA  
717-867-5161

D.J. Implement  
Dayton, VA  
703-879-9926

Charles S. Snyder  
Tamaqua, PA  
717-386-5945

Harry Calabine  
Beavertown, PA  
717-658-8007

Deer Creek Equipment  
Whiteford, MD  
1-800-551-6567

John Brown Equipment  
Perryopolis, PA  
724-326-8812