

Salesmen:
Alvin Martin
Bill Ryland



WENGLERS OF MYERSTOWN FARM MACHINERY (717) 866-2135



814 S. COLLEGE ST. (ROUTE 501)

wenglers@ptd.net • http://www.wenglers.com

MYERSTOWN, PA 17067



White 271 18' rock flex disc, very nice



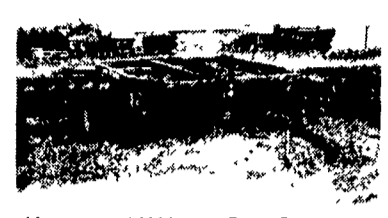
Massey Ferguson #820 18' Rock Flex Wing Fold, Good Condition, Fair Paint



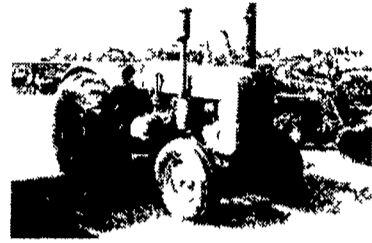
IH 8' Wheel Disk, Good Cond, New Paint



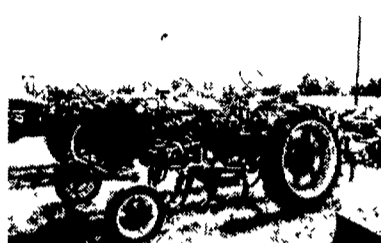
John Deere 8' Offset Disk



Kewanee 12' Heavy Duty Rockflex, Good Condition, Fair Paint



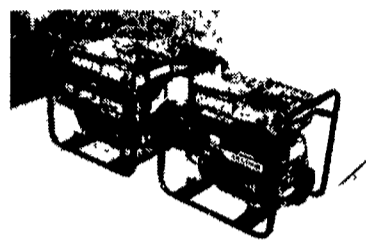
John Deere 'D' Runs Good, 1946 Model, Poor Paint



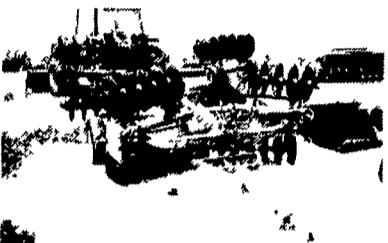
Farmall Super C w/Wide Front, Fast Hitch, w/Cultivator



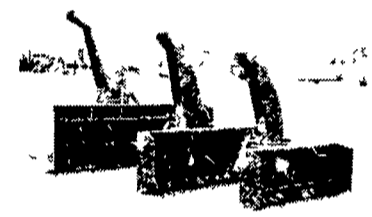
A-C 7080 Fr Weights, 3 Remotes, 4528 Hrs, 180 HP



Kubota 3800 and 4000 Gas Engine Generators, Both Are Like New Condition With Low Hours



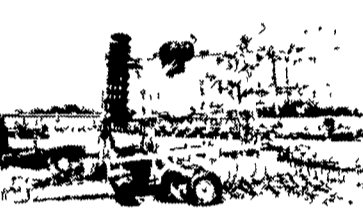
Kewanee 14 flat fold, manual fold very good disc



3 pt Hitch Snowblowers 4', 5', 6' & 7' in stock (1) 5' for skid steer in stock



Long 1199 3 Pt Backhoe Attachment w/PTO Pump, 16" Bucket



Krause 21' Landsman Field Finisher, Very Good



Good Selection of Loader Buckets



Woodsman 3 Pt PTO Woodsaws 30" Blade

TRACTORS

- JD 6030, Open Station
- JD 4630, Cab, Quad
- JD 4430, Cab, Quad
- JD 4240, Cab, Quad
- JD 4050, Cab, Powershift
- JD 4030, Open Station, Quad
- JD 4020, Cab, Syncro, 70 Model
- JD 4020 D, Syncro, 69 Model
- JD 4020 D, Syncro
- JD 4020 D, Powershift
- JD 3020 D, Syncro, Low Hours, 69 Model
- 3) JD 900 Offset w/Cultivator
- JD D, Styled, Good
- JD G, Unstyled, Redone, (inside)
- JD AR, Redone, (inside)
- JD LA, Redone, (inside)
- IH 1468, V-8, 2 Post Canopy
- IH 1086 w/ROPS
- IH 886, Cab
- IH 826 D, Fast Hitch
- IH 574 Gas w/Cab
- IH 454 Gas w/QT Loader (Poor)
- IH 154, Cub Lo-Boy w/5' Mower
- Case IH 265 Offset
- AC 7080, Cab, Nice
- AC 200 Open Station
- AC G, Good
- AC CA, Wide Front
- Ford 861, Good Cond.
- Ford 860
- Ford Golden Jubilee
- Ford 8N, Nice
- 2) Farmall 140 w/cultivator (sharp)
- Farmall 300, FH, Power Steering
- Farmall 230, FH
- Farmall 200, FH
- Farmall M w/loader (will separate)
- Farmall C
- Farmall Super C, WF, FH, Cultivator
- 2) Farmall Super H
- MM 670, Gas, WF, 3 pt
- Oliver 66, WF, 3 pt.

PLOWS

- IH 720 7x16, Auto Reset, On land
- IH 720 5x16, Auto Reset
- IH 720 5x16, Toggle Trip, Nice
- IH 720 4x18, Auto Reset
- IH 710 5x16, Auto Reset
- IH 710 4x16, Auto Reset, Nice
- IH 450 3x16 Auto Reset
- White 549, 5x18 Auto Reset, Nice
- JD 3600 5x18, Auto Reset, Pull Type
- JD 3825 2x 3 pt Switch Plow
- 2) JD F145 3x 3 pt. Plow
- 4) JD 4x Pull Type Plow
- JD 2x14 3 pt. Trip
- JD 2x16 3 pt. Trip Plow
- 2) Oliver 2x Pull Type Plow
- 3) Dearborn 2x14, 3 pt.,
- Several IH 1, 2, 3 & 4 X FH Plows
- Many More Small Plows Not Listed

SICKLE BAR MOWERS

- 2) NH 451 7' 3 pt. sickle
- NH 455 7' Pull Type
- 2) JD 350 7' 3 pt Sickle
- JD 450 9' Pull Sickle
- Ford 515 7' 3 pt. Sickle
- Ford 501 7' 3 pt. Sickle
- IH 1300 7' Semi-Mount
- IH 7' Fast Hitch Sickle
- AC 7' Rear Mount Sickle Mower

DRILLS

- EZ flow 4', 8' and 10' lime drills
- JD 8200 21x10 DD soybean drill
- JD 8200 14x7 DD grain drill
- IH 5100 21x7 DD w/Grass & Press Whls.
- IH 510 16x7 DD w/Grass & Fertilizer
- MF 33 15x7 SD w/grass & fertilizer

MANURE SPREADERS

- JD 350 Spreader, very nice
- JD 350 w/tailgate and pan, sharp
- IH 530 Spreader
- Schultz 150 Bushel PTO Spreader
- New Idea 14A Spreader
- NI 3615 Sharp
- NI Tandem Axle & Tailgate
- NH 328 (nice)

DISC HARROWS

- 2) White 271 18' Rockflex, Nice
- Kewanee 14' Flat Fold
- 2) Kewanee 12' Rockflex, 1 is Heavy Duty
- Kewanee 14' Rockflex, Flat Fold
- Hutchmaster HD 12' offset
- Sunflower 18' Rockflex
- JD 10' TWA Cutting Disk
- IH 10' transport disk
- 3) IH 8' Transport Disc
- 2) Miller 11' Offset
- IH Cub 4' Disk
- IH 8' FH Disk
- IH 8' 3 pt Disk
- Ford 6' 3 pt Disc
- MF 18' Rockflex wingfold
- MF 10' Rockflex
- MF 11' Disc
- AC 9' Transport Disc
- Oliver 8' Transport Disk

SNOW EQUIPMENT

- Agro Trend 4' 3 pt snowblower
- Walco 5' 3 pt. snowblower
- Agro Trend 6' 3 pt. snowblower
- Agro Trend 7' 3 pt. snowblower
- Agro Trend 7-1/2' 3 pt. snowblower
- Inland 5' skid steer snowblower
- Farmall Cub snow blade
- Farmall Super A snow blade
- Farmall Super C snow blade
- 154 Cub lo boy snow blade
- JD 10' front blade (fit 4020, 4430, etc.)
- JD 8' front blade (fit 4020, 4430, etc.)
- (2) 7' snow blade off farm loader
- JD 54" blade (fit JD 655)
- JD 54" blade (fit JD 318)
- AC 6' Snap Coupler Blade
- Sauder 7' Front Blade

CHISEL PLOWS

- Bush Hog 10T 3 pt
- Bush Hog 12T 3 pt
- Chatanooga 11T 3 pt
- Glenco 10T 3 pt
- Glenco 9T soil saver
- IH 10T pull type
- (2) IH 11T 3 pt
- (2) IH 13T 3 pt
- JD 10T 3 pt. #1600
- JD 12T 3 pt #1600

MISCELLANEOUS

- '79 Tri-Star 16' Gooseneck Dump Trailer
- Worthington 16' Alum Trailer
- 2) 3 Pt Log Splitter
- 3) Belt 16' Alum Elevator
- 6) Gravity Bin Wagons
- Howard 11' 3 pt. HD rotovator
- 18 4x38 Open Center Duals
- 20 8x38 Open Center Duals
- Bear Cat 1101 Grinder/Mixer
- JD 400 Grain Cart
- Gehl 3310 Skid Steer Loader
- Gehl 7285 TMR Mixer w/Scales
- Tyler ? Tandem Fert Spreader
- JD 27 14' Stalk Chopper
- IH 40 12 1/2' Stalk chopper
- Danuser FH Post Hole Digger
- Buffalo Valley 32' elevator (new)
- Little Giant 30' elevator
- Ag Wrap 5x5 round bale wrapper (demo)
- 3 pt. bale movers
- Farmco 18' Steel Hay Wagon
- Iron Age Ground Drive Potato Digger
- 8' Land Roller
- Woods 3180 15' Batwing
- Woods 2126 10 1/2' Mower
- Bush Hog 7' 3 Pt. Mower
- Rhino 10' 3 Pt Blade w/Hyd
- Woods 7' 3 Pt Blade w/Hyd

STRIVING TO PROVIDE TOP QUALITY USED EQUIPMENT