



NOVEMBER 8-14, 1999

VETERANS DAY, NOVEMBER 11.

**HERBS GALORE**

Have you harvested your winter's store of fresh herbs to dry? Consider some kitchen window boxes to coax those last hardy herbs into a longer life. Sage, rosemary, oregano, mint, and thyme all transplant well, if done with care. Parsley takes a very deep pot to preserve the taproot that gives the plant its lifeline. Basil is finicky inside, unless you've got "grow" lights to help it along. A kitchen garden can be a thing of beauty, however, and a lingering touch of fragrant foliage can bring summer memories back into the darkest days.

*O! mickle is the powerful grace that lies in herbs...*

- William Shakespeare

**TIP OF THE WEEK**

Chop fresh herbs and freeze in ice cube trays, with a little water, for later use.

**HERB-STUFFED PASTA**

- 8 ounces jumbo pasta shells
- 8 ounces cream cheese
- 4 ounces ricotta or cottage cheese
- 2 eggs, beaten
- 1 clove garlic, minced
- 2 tablespoons chopped fresh chives
- 2 tablespoons chopped fresh parsley
- 2 tablespoons chopped fresh sage, basil, tarragon, OR thyme
- salt and pepper, to taste
- 1/2 cup bread crumbs

Look pasta as directed, do not overcook. Drain and set aside. While pasta is cooking, combine cheeses, then mix in eggs and seasonings. Stir in bread crumbs last. Stuff each pasta shell with a bit of the cheese-herb mixture. Arrange stuffed shells in a greased, covered casserole and bake at 400° F for 10 minutes, until filling is hot.

Makes 6 servings.

www.almanac.com

**United Feature Syndicate**

(Printed in the U.S.A.)

200 Madison Ave  
N.Y., NY 10016  
(212-293-8500)

**The Old Farmer's Weather Proverbs**



*If the geese at Martin's Day (Nov. 11) stand on ice, they will walk in mud at Christmas.*

*If it is at St. Martin fair, dry, and cold, the cold in winter will not last long.*

*Look for a cold winter if the muskrats make long, high dens.*

**Four States Livestock**

Hagerstown, Md.  
Nov. 3, 1999

Report Supplied By Auction  
SLAUGHTER COWS: 171 HEAD, 1.00 HIGHER. UTILITY 36.00-40.50; HIGH DRESSING 41.00-43.50; CANNERS 31.00-36.00; SHELLY 31.00 DOWN.  
BULLS: 7 HEAD. YG#1 1400-1700 LBS. 44.00-46.50; YG#2 1100-2200 LBS. 38.00-42.75.  
FED STEERS: 22 HEAD, HIGHER. HIGH CHOICE TO PRIME 1200-1450 LBS. 70.50-72.00; CHOICE #2-3 64.00-69.50; CHOICE #3-4 1400-1500 LBS. 61.50-63.00; LOW CHOICE 1000-1200 LBS. 60.00-61.00.  
FED HEIFERS: 14 HEAD. HIGH CHOICE 1050-1200 LBS. TO 68.25; CHOICE TO PRIME 1200-1300 LBS. TO 70.25; SELECT HOLSTEINS 1000-1200 LBS. 44.00-47.00.  
VEAL CALVES: 168 HEAD. HIGH CHOICE 264 LBS. AT 85.00; CULLS 85-110 LBS. 25.00-33.00, 110-130 LBS. 36.00-39.00, 60-85 LBS. 17.00-27.00.  
FARM CALVES: HOLSTEIN BULLS 5.00 HIGHER. #1 95-120 LBS. 100.00-128.00; #2 70.00-95.00; #1 84-94 LBS. 50.00-77.00; HOLSTEIN HEIFERS #1 90-120 LBS. 235.00-305.00, 80-90 LBS. 150.00-230.00; BEEF X BULLS 95-120 LBS. TO 115.00; HEIFERS TO 105.00.  
BUTCHER HOGS: #1&3 300-350 LBS. 30.00-32.00; 350-450 LBS. 26.00-32.00.  
SOWS: 16 HEAD. 300-450 LBS. 20.00-32.00; 450-650 LBS. 23.00-27.00.  
BOARS: 400-450 LBS. TO 7.00.  
STOCK CATTLE: 226 HEAD, 2.00-6.00 LOWER. STEERS MED. AND LARGE FRAME 200-400 LBS. 70.00-80.00; 400-600 LBS. 65.00-79.50; 600-700 LBS. 63.00-73.00; 700-900 LBS. 57.00-64.00; 900-1050 LBS. 55.00-63.00.  
HEIFERS: MED. AND LARGE FRAME 300-500 LBS. 62.00-69.00;

SMALL AND MED. 53.00-60.00; 500-700 LBS. 60.00-66.00; SMALL AND MED. 54.00-60.00; 700-900 LBS. 55.00-63.00.  
BULLS: MED. AND LARGE FRAME 200-400 LBS. 69.00-74.00; 400-500 LBS. 67.00-76.00; 600-800 LBS. 57.00-63.00.  
DAIRY REPLACEMENTS: 35 HEAD.  
1 LARGE REG. SPRING COWS 1400.00; LARGE GRADES 860.00-1075.00; 1 MED. SPRINGING HEIFER AT 1085.00; FRESH COWS 700.00-1050.00; OPEN HOLSTEIN HEIFERS 5.00. 140.00-280.00, MEDIUM 290.00-430.00.  
SHEEP: 28.00-31.00.  
LAMBS: 22 HEAD. CHOICE 60-80 LBS. 85.00-93.00.  
GOATS: 5 HEAD SMALL 10.00-25.00.  
PIGS AND SHOATS: 57 HEAD, MAINLY CULLS. BY THE HEAD 16 HEAD 30-40 LBS. TO 15.00.  
NEXT WED., NOV. 10: SPECIAL FEEDER CATTLE SALE. PROMISED: 14 HEREFORD HEIFERS (PUREBRED) BRED TO HEREFORD BULL, DUE IN APRIL.

LBS. 47.00-64.00; HEIFERS MED. AND LARGE #1 400-700 LBS. 58.00-67.00. LARGE #2 750-850 LBS. 52.00-57.50; BULLS MEDIUM AND LARGE #1 400-600 LBS. 60.00-68.00, MEDIUM AND LARGE #2 400-850 LBS. 41.00-47.00; CALVES RETURNING TO FARM HOLSTEIN BULLS #1 95-120 LBS. 100.00-107.00, 80-90 LBS. 50.00-85.00; HOLSTEIN HEIFERS #1 90-120 LBS. 200.00-240.00, 70-85 LBS. 105.00-195.00.  
SWINE: HOGS US#1-3 220-270 LBS. 34.50-35.50 COUPLE TO 36.50, 290-450 LBS. 24.00-30.75; BOARS OVER 500 LBS. 5.50; SOWS US#1-3 300-500 LBS. 20.00-28.00, WET/THIN/WEAK/ROUGH TO 19.50; FEEDER PIGS BY THE HEAD 25-30 LBS. 9.00-11.00, 35-60 LBS. 13.00-25.00.  
GOATS: BY THE HEAD, FANCY KIDS 54.00-69.00, FLESHY KIDS 37.50-52.50, MEDIUM/LARGE NANNIES 48.00-65.00, SMALL/THIN KIDS 17.50-32.50.  
LAMBS: GOOD AND CHOICE 20-40 LBS. 107.50-112.50, 40-60 LBS. 85.00-95.00, 65-100 LBS. 76.00-81.00.  
SHEEP: ALL WEIGHTS 32.00-35.00. SALE EVERY TUES. 5 P.M. FOR RABBITS, POULTRY AND EGGS; 6:30 P.M. FOR LIVESTOCK, STARTING WITH CALVES; SPECIAL FED CATTLE SALE TUES., NOV. 16; STATE GRADED FEEDER PIG SALES FRI., NOV. 12 AND 26; SPECIAL FEEDER CATTLE SALE TUES., NOV. 16. ALREADY EARLYBIRD PENS CLOSE TUES. 2 P.M.

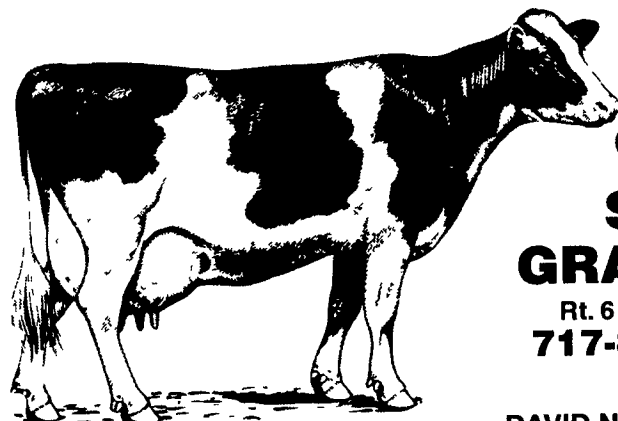
**Carlisle Livestock**

Carlisle, Pa.  
November 2, 1999

Report Supplied By Auction  
SLAUGHTER CATTLE: STEERS, GOOD RUN, ACTIVE! CHOICE 1000-1490 LBS. 67.00-71.75, 1500-1800 LBS. 60.00-68.50; SELECT AND LOW CHOICE 60.00-67.00.  
HOLSTEINS: SELECT 54.50-56.50. HEIFERS: CHOICE 900-1450 LBS. 65.75-69.75, SELECT AND LOW CHOICE 61.50-65.50.  
COWS: ACTIVE! BREAKERS 38.00-45.00, BONERS 32.00-38.50, LEAN 29.00-35.00, SHELLY 27.00 AND DOWN.  
BULLS: 1250-2000 LBS. 40.00-47.00.  
FEEDER CATTLE: STEERS, HOLSTEINS/DAIRY TYPES 300-850



**Feed those grains for big savings. We will roast on your farm.**



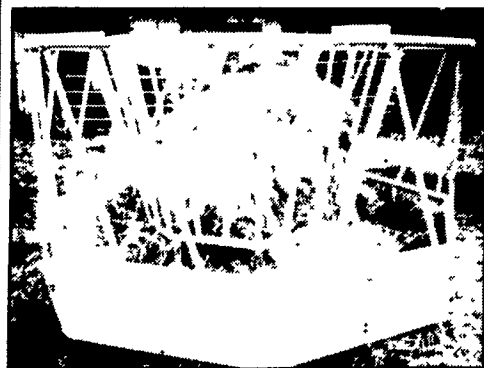
Those roasted grains are really tasty

**SCHNUPP'S GRAIN ROASTING**

Rt. 6 - Box 840, Lebanon, PA 17046  
717-865-6611 Fax #865-7334  
800-452-4004  
DAVID N. GROFF, RD #3 Lewisburg, PA  
717-568-1420

**LEBANON VALLEY ENTERPRISES, INC.**  
Manufacturing • Powder Coating • Precast

- X Saves feed by keeping feed off the ground
- X High yield steel tube construction
- X Baked on high gloss, high impact and acid resistant TGIC polyester powder coating
- X Feeder comes disassembled for ease of hauling
- X High Quality
- X Parts easily replaced with bolt together design
- X Affordable Prices
- X Pulling lugs to move feeder from one area to another



**BALE FEEDER**

P.O. Box 187, Myerstown, PA 17067 • (717) 866-2030

**BINKLEY-HURST BROS. INC.**

133 Rothsville Station Rd. • Lititz, Pa 17543  
717-626-4705

**WE SHIP PARTS DAILY**

• UPS • FedEx • TRUCK FREIGHT

• AIR FREIGHT • B&H DELIVERY SERVICE

Logos for Case IH, Eger Beaver Trailers, Degelman, Scott, Flusky, Monosem, Sunflower, Kinze, Redline, Athens, and Knight.

**CASE IH QUALITY OIL**  
Case IH Oil Meets All The Specified Requirement For Maximum Performance In Your Equipment  
99¢/qt. #1 Diesel ENGINE OIL 15W/40 or 30W  
30 Gallon Drums Part #253782A1 Part #407360R4

**KNIGHT**  
No Matter Where You Are - You're Never Too Far!

**BUSY AS A BEE?**  
Your Parts Are Just A Phone Call Away!

This Is Our Fax No. 717-626-0996

If You Have A Fax No., Let Us Know, We Can Communicate With You By Fax.