

Woodcrest Motors

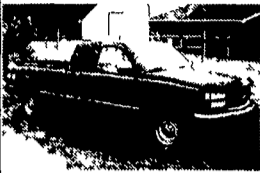
SPECIALIZING IN TRUCKS & VANS
1200 North Reading Rd., (Rt. 272) Stevens, (Lancaster Co.) PA 17578
717-336-3130



96 FORD F250
EXT. CAB XL
351 V8 5 Spd
A/C 4x4
Long Bed
Dual Tanks,
34,000 Miles
\$16,900



95 DODGE
RAM 2500
SLT 4X4
360 V8 AT A/C
58,000 Miles
\$15,900



94 GMC 2500
SIERRA SLE
EXT. CAB 4X4
454 V8 5 Spd
Most Options,
92,000 Miles
\$14,995



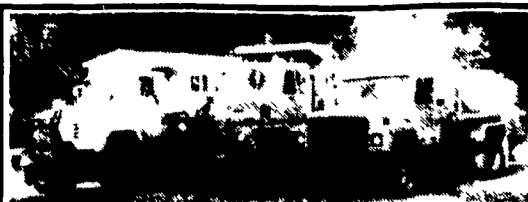
93
INTERNATIONAL
4900 DT 466
Turbo Diesel 24 Ft
Box Elec Lift Gate
7 Spd A/C Air
Brakes 33,000 GVW
170,000 Miles Nice
Condition \$18,995



89 FORD F700
DUMP TRUCK
14 Ft Box 6 Cyl
Turbo Diesel
5 Spd A/C Air
Brakes 24,500
GVW New
Inspection, Red
\$12,995



95 FORD F150
XLT, 4x4
V8, 5 Sp., Most
Options Black
Shortbed
79,000 Mi
\$11,995



TRUCK SALE

- 1979 INTERNATIONAL PAYSTAR, alum Cab, 230 Cummins, 9 sp., AB, PS, flotation tires on front, 14' Steel dump, plow hitch with lights, central hydraulics, 58,400 GVW-----\$9,000
- 1986 FORD L8000, 3208 CAT, 7 sp., AB, PS, Central hyd., 10' Steel dump, plow and spreader available 38,000 GVW-----\$10,500
- 1980 INTERNATIONAL, 404 Gas, 5+2 sp., AB, PS, 1400 gal. Tank w/2 pumps, self-loading & rear spray bar 28,000 GVW-----\$2,500
- 1994 FORD LN7000, 5.9 Cummins (175 hp), 6 sp., AB, PS, AC, with 22' Morgan Box with liftgate, 26,000 GVW (no CDL)-----\$16,900
- 1994 FORD LTL9000 Day Cab Tractor, long wheel-base, 3406C CAT engine (425 hp), 15 sp., PS, AB, AC, air ride, 175,000 miles-----\$34,500
- Used 10" Dump Beds, Steel and Aluminum

SUNNY ACRE SALES

R.D. #2, Tyrone, PA
814/742-8202 or 814/742-7303



CURRY SUPPLY CO.

CURRYVILLE, PENNSYLVANIA 16631
PHONE: (814) 793-2829
TOLL FREE: (800) 345-2829
FAX: (814) 793-4877

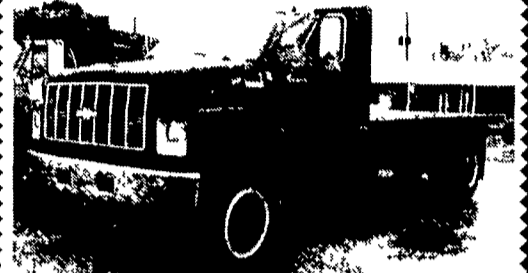
- (2) 1981 Paystar 5000 International Truck Tractors, 8V92 Detroit Diesel, 8LL Trans, Hendricksen Suspension, 44,000 Lb Rears \$10,500 each
- 1984 White Volvo with Integral Sleeper, 400 Cummins, 13 Speed Trans .. \$8,500

Sheets

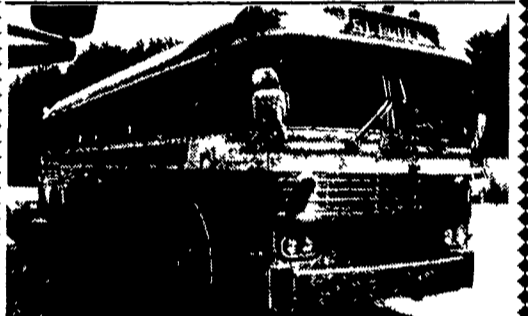
TRUCK CENTER, INC.

Hanover, PA
Route 94 - 5 Mile
South Off Rt. 30 & 94
Intersection
717-637-2108
PA Toll Free
1-800-762-1503

York, PA
(Route 462)
2818 W. Market St.
717-792-2277
PA Toll Free
1-800-475-3900



1990 CHEVY KODIAK, w/18' Flatbed Dump Body 15 Ton Hoist, Wood Floor, 7.0L V8 Engine, 5 Spd Fuller w/2 Spd Rear, Pwr. Strng, Air Brakes, Air Condition, Air Ride Drivers Seat, 11,000 Front Axle, 23,000 Rear Axle, 22.5 Rubber, \$14,900 \$12,500 Firm



1996 MC 5A Challenger Bus, 47 Pass., 8V 92 Detroit Eng., 4 Speed, Air Ride, AC, Alu/Stainless, Current PA Inspection - Well Maintained Vehicle! Church Owned \$7,500

KEIM

YOUR CHEVY GEO FAMILY

(717) 768-8225
(800) 223-KEIM

RT 30 Lincoln Highway East
Paradise, PA 17562

YOUR TRUCK, VAN & 4x4 HEADQUARTERS

1-800-223-KEIM



95 CHEVY C3500 EXT. CAB
Dually AT Silverado Pkg
Only 18,000 Miles



2000 CHEVY C30 CHASSIS
CAB, 454 V8 AT, A/C
You pick the body



(5) 2000 CHEVY K30
CREW CABS
450 & 350 V8
Base & Nicely Equipped



99 CHEVY 1 TON REG. CAB
2WD, Stake Body, 350 V8,
AT, A/C



95 CHEVY K1500
EXTEND CAB SILVERADO
350 V8 60,000 Mi,
Navy & Silver
\$18,900



(2) 2000 CHEVY G30 CUT
AWAY HIGH CUBE VANS
12' & 14' Bodies, 350, AT, A/C
Both White



95 CHEVY G30
CARGO VAN
350 V8, AT, A/C, Burgundy



94 CHEVY ASTRO
CARGO VAN
V6, AT, A/C, White, 53,000 Mi



BOWERS USED CARS INC.

Route 30 West of Abbottstown, PA
7015 York Rd. 717-624-7072



97 DAYBREAK BY
DAMON 33 Motor Home 460
V8 Ford Central AC & Heat Rear
Camera Driver
Door 17,000 Miles \$39,900



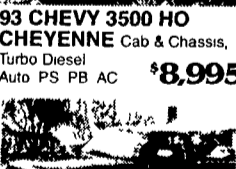
88 CHEVY 3500
BUCKET TRUCK
V8 Auto PS
PB Generator \$9,500



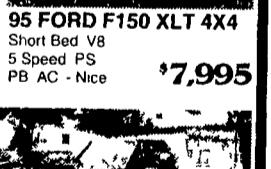
93 CHEVY 3500 HO
CHEYENNE Cab & Chassis,
Turbo Diesel
Auto PS PB AC \$8,995



95 FORD F150 XLT 4X4
Short Bed V8
5 Speed PS
PB AC - Nice \$7,995



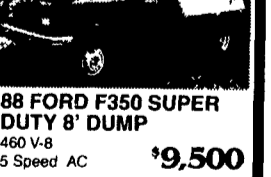
94 DODGE RAM 1500
LARAMIE SLT
Short Bed 4x4 V-8
PS PB Equipped \$12,900



88 FORD F350 SUPER
DUTY 8' DUMP
460 V-8
5 Speed AC \$9,500



97 FORD EXPEDITION
XLT 4X4
V-8, Auto PS
PB *Equipped \$19,900



98 FORD F150,
Ex Cab XL 4x4 Triton V-8,
Auto PS PB AC
3rd Door 25,000 Miles \$17,900



93 FORD ECONOLINE
250 VAN
306 6 Cyl., Auto
PS, PB AC \$6,500



95 JEEP GRAND
CHEROKEE 4X4
6 Cyl., Auto,
PS PB, AC \$10,900

HOSTETLER
Truck Bodies & Trailers
717-667-3921
Milroy Exit off Rt 322
Between Lewistown & State College

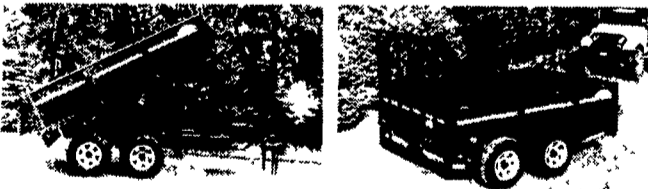
Financing & Leasing Available



Moritz Slant Load Bumper Pull Live
stock Trailers, Dressing Room 7' High,
Starting at
2 Horse \$3,575
3 Horse \$3,975

FEATURE PRODUCT

MORITZ DECKOVER AND LOW PROFILE TRAILERS



7000# • 10,000# • 12,000# GVW'S

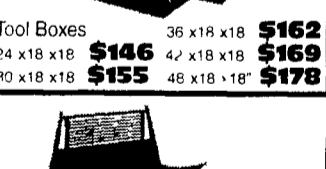
ELECTRIC HYDRAULIC HOIST, VARIOUS TAILGATES AVAILABLE

7000# DECKOVER DUMPS STARTING AT \$3,690

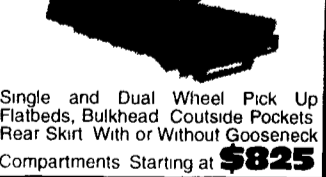
10,000# LOW PROFILE WITH LANDSCAPE GATE - \$4,340



Tool Boxes 36 x18 x18 \$162
24 x18 x18 \$146 42 x18 x18 \$169
30 x18 x18 \$155 48 x18 x18 \$178



Single and Dual Wheel Pick Up
Flatbeds, Bulkhead Coutside Pockets
Rear Skirt With or Without Gooseneck
Compartments Starting at \$825



Hydraulic Tilt Deck Trailer
19 10,000 GVW \$3,695
19 12,000 GVW \$3,995



Moritz Skid Loader Trailers 82" Wide Between
Fenders Rubber Torsion Axles Treated Pine Floor
10,000# Drop Leg Jack Spare Wheel & Tire Adj
Coupler 10,000 GVW Available in 7 Colors
16 Long \$2,800
18 Long \$2,995



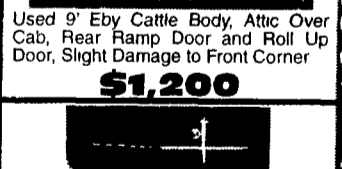
Eby Trailers In Stock,
Both Gooseneck & Bumper Pull



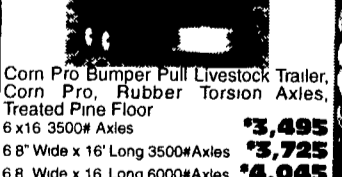
Pronovost Model P-516 Farm Dump,
Trailer, 8 Ton Capacity, 5'x10' 16'
Removable Sides, Twin Cylinder
\$3,495



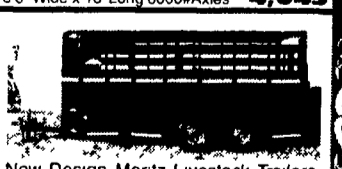
Used 9' Eby Cattle Body, Attic Over
Cab, Rear Ramp Door and Roll Up
Door, Slight Damage to Front Corner
\$1,200



Corn Pro Bumper Pull Livestock Trailer,
Corn Pro, Rubber Torsion Axles,
Treated Pine Floor
6 x16 3500# Axles \$3,495
6 8" Wide x 16' Long 3500# Axles \$3,725
6 8" Wide x 16' Long 6000# Axles \$4,045



New Design Moritz Livestock Trailers
Semi Round Front, New Sides and
Rear
6 x16 7000# GVW \$3,495
6 8" x 16 Long 7000# GVW \$3,795



1981 IHC Crane Truck 9 Liter Diesel,
28,000# GVW, 5 & 2 Spd 2000#
Knuckle Boom Crane, Lift Gate
\$5,500