

## Public Auction Register

Closing Date Monday 5:00 P.M.

of each week's publication

Internet Sale Register will be updated every Sat. at 2:23 P.M.

### ATTENTION Auctioneers

All sales register info needs complete address, street, town, county & state.

FRI NOV 12 - Autumn Opportunity Sale, Muncy Pa The Cattle Exchange

FRI NOV 12 - 9AM Farm Equip of the late Guy Krill, Frystown, Pa Berks Co Dwight Miller, auct

FRI NOV 12 - 9 AM Tractors, Farm Equip & Supplies A&C Diefenbach Auction Inc 100 W Jackson St, New Holland, Pa Allen Diefenbach Auct 717-355-7253

FRI NOV 12 - 1PM Autumn Opportunity Sale Held at Fraley Dairy Complex, 3 miles W of Muncy on Kenper Hill Rd., Cattle Exchange

FRI NOV 12 - 1PM John M Hess Auction Service, Special antique and collectible sale, at Green Dragon Farmers' Market, 955 N State St., Ephrata, Pa John, Dennis & Bob Wolgemuth, aucts

FRI NOV 12 - 1PM State Graded Feeder Pig Sales Carlisle Livestock Market, Inc., 548 Alexander Springs Rd., Carlisle, Pa

FRI NOV 12-12PM Dairy Sale Middleburg Livestock Auction Sales Inc., PO Box 185, Middleburg PA

FRI, NOV 12 - 6 PM Feeder Sale New Holland Sales Stables Inc., 101 W Fulton St., New Holland, Pa

FRI NOV 12- 4PM & SAT NOV 13 8 30AM Over 770 lots of antique american pattern glass textiles, primitives, silverplate, ornamental english & continental china Held at Horst Auction Center, 50 Durlach Rd., Corner of Rt 322 & Durlach Rd West of Ephrata Lanc Co Pa Horst Aucts

FRI NOV 12 & SAT NOV 13 - 9AM Country Rt 125 Campbell, NY Randy Jelliff Auction Service

SAT NOV 13 - 8 30AM Dorothy T Hoke Estate, Lebanon, Martha Denniston Est Mt Gretna, Eyla "Tillie" Spangler, Lebanon & local collections & estate at Kleinfeiler's Auction Room 105 Chape St Leb., Pa

SAT NOV 13 - 8 30AM At the Dover Fire Co Rt 74N from York to Dover Square, 1 block E to Fire co Nevin B Remntzel, Zachery R Gross, auct

SAT NOV 13 - 8 30AM For the Elda L Ehrhart Estate Antiques guns, house items Winterstown Fire Hall Winterstown, York Co., Pa Approx 3 1/2 mi S of Red Lion along Rt 24 Charles Wehrly, Ralph Brenneman, aucts

SAT NOV 13 - 9AM Real estate, antiques, farm equip, sheep Sheep Hill Rd., Schaefferstown, Heidelberg Twp Leb Co., Pa By Richard R & Cheryl W McCune Sanford G Leaman auct

SAT NOV 13 - 9AM Garage auction, of the late Wilbur (Buster) Miller, 611 Northway Road, Linden, Lycoming Co., Pa Marie M Miller, owner Scott Younkin & Associates, aucts

SAT NOV 13 - 9AM Tractors, trucks & farm machinery for Betty F Tyson & the late Willis Tyson of Fawn Grove, Pa At 261 W Bruce Rd., Fawn Grove, Pa approx 5 mi NE of Fawn Grove Sechrist Aucts

SAT NOV 13 - 9AM Real estate, antiques, household goods, lots of advertising goods, advertising articles, cream & green Columbia coal cook stove, toys, games & puzzles, scrap books books Ag 2361 Beaver Valley Pike, Providence Twp, Lanc Co., Pa By Helen G Trimble Estate Howard E Shaub, Inc., auct

SAT NOV 13 - 9AM Building material electrical and plumbing supplies, fans and roof trusses Approx 4 mi N of Shippensburg, along Rt 11, 1700 Ritner Hwy, Cumberland Co., Pa By Lawrence R Martin Lamar Z Sensenig, Andrew Martin, aucts

### "Largest Christmas Tree Auction On The East Coast!"

**TUESDAY, NOVEMBER 23, 1999**

9:00 A.M.

**BUFFALO VALLEY PRODUCE AUCTION, INC.**  
Mifflinburg, PA

**DIRECTIONS:** From Harrisburg, take Rts. 11 & 15 North to Rt. 15 North to Lewisburg. In Lewisburg turn left and travel West on Rt. 45. Go 5 1/2 miles to Dreisbach Church Rd. Turn left, travel 1 3/4 mile on Dreisbach Church Rd. to 4-way stop. At stop turn right travel 300 yds., turn left. Auction straight ahead.

*We will be selling thousands of trees of all varieties Also selling wreaths, roping, garland, and Christmas crafts.*

If you buy or sell trees, don't miss this auction • Bring a load, buy a load!

FOR MORE INFORMATION CALL (570) 966-1151  
NEIL COURTNEY, MANAGER • AH000230-L

## Public Auction

**Valuable Farm Equipment and Household Items**

**SAT., NOV. 6, 1999 9:30 AM**

Located approximately 10 miles west of Wellsboro, Tioga Co., PA. From Wellsboro take Rt. 660 west on way to Leonard Harrison State Park. Watch for auction signs directing to Kennedyville Road turn rt. go to Noble Rd., turn left to auction. HD5, A.C. Crawler w/loader, 2 J.D. B tractors and J.D. B parts, N.H. 479 haybine, Sauder snowplow for Ford 5000, 1-row transplanter, 5 bottom Oliver plow, 3 bottom trailer plow, Oliver 3 pt. 2 bottom plow, 5 bottom J.D. plow, 1 - 2 row 3 pt. Cultivator, 4 row cultivator, 4 row A.C. corn-planter, NI spreader side discharge, NI wagon gear, NI 2 Row Narrow Cornpicker, 3 pt. post driver, NI conditioner, 640 side rake, lime spreader, Zimmerman hay tedder, 352 N.H. grinder mixer, disc harrow, 2 saw mandrels, over 200 ft. 3" irrigation pipe & sprinklers, platform scale, Zimmerman 32' elevator, large belt, wheel horse mower, shop press, steel band saw & various shop items, chicken plucker, Chev. van running boards and seats. Auction will begin with small items on wagons. Household items - 2 buffets, double beds, brass single bed, corn dryer, sectional book-case, oak dressers, 2 Empire bureaus, quilting frame, dated jars, green and clear glass, high top kitchen cabinet, cotton feed bags w/ads, treadle sewing machine, dough mixer, numerous other items of value not listed.

Auction For:

**CLARENCE and VERA ZIMMERMAN**

*Elmer Murry Auctions, Inc.*

-AU-648-L-

Professional Auctioneer, Appraiser and Advisor  
Our Services Are Not a Sideline

(717) 626-2636 Fax (717) 627-6757

Food on Premises

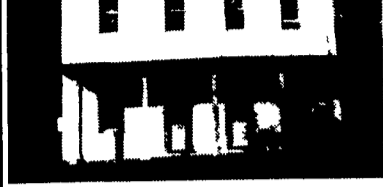
## REAL ESTATE & HOUSEHOLD AUCTION

**FROM THE CHARLES DESCH AND MILDRED KLOPP ESTATE**

**Saturday, November 20, 1999**

Property to be offered at Noon

Open House Sunday, Nov. 7, 1999 from 2-4 PM



From Reading area: take Route 183 North until approx 2 miles north of Bernville Follow New Schaefferstown Road approx 5 miles to second stop sign Take a right

From Lebanon

area: take Route 422 East to 501 North. Follow until approx. 1 mile South of Bethel Continue straight on Rehersburg Road. Real Estate located on the corner of Godfrey and Brown Streets (House Number 473) Rehersburg, Berks County Phone number day of sale. 610-909-4211

Large 2-1/2 Story Brick Home has a Wonderful Floor Plan Many exciting possibilities exist for someone willing to restore this historic Property. House is situated on a Large Spacious Corner Lot with Mature Trees

Terms: 10% down day of sale and settlement within 45 days.

Any and All Testing & Inspections Must Be Completed Prior to Sale Date.

Sale ordered by:

**Burt W. Klopp**

Auctioneer:  
Richard A. Kramer  
AU-003135-L  
717-933-8600  
Rick Kramer  
AA-002278-L



Food Provided by  
Rehersburg Fire Co.

## LEAMAN AUCTIONS & REAL ESTATE



Sanford G. Leaman, CAI  
Auctioneer/Realtor/Appraiser  
101 White Oak Drive,  
Lancaster, PA 17601-4842  
Ph. (717) 569-4264 - FAX (717) 569-8847  
\*Toll Free 1-800-836-8113  
\*WEB SITE: <http://www.lamnauct.com>  
\*EMAIL: [farmboy@lamnauct.com](mailto:farmboy@lamnauct.com)

## Public Auction

of

**VALUABLE REAL ESTATE**  
**ANTIQUES, FARM EQUIPMENT,**  
**SHEEP, ETC.**

**Sat. November 13, 1999**

Personal Property @ 9:00 AM

Real Estate @ 12:00 Noon

Location: Sheep Hill Road, Schaefferstown.  
Heidelberg Township, Lebanon County, PA.

Directions: From Rt. 501 at light in Schaefferstown Go East 1 block and turn right to Sheep Hill Rd. Property is next to Community Park.

Property consists of a tract of land on 2 deeds but will be sold as (1) one tract of 10.91 acres m/l. This tract has a restored 2-1/2 story frame home with some aluminum siding, enclosed balcony, basement office which is ground level. There is a total of 2860 sq. ft. with 1-1/2 bath. 2 good sized bed rooms and a large Master bedroom. The modern Oak kitchen by: Rutt/Martin is very adequate with a breakfast or dining area. The appliances remain, including dishwasher, range with microwave oven. There is a food pantry and butcher block work area The home features Random width pine floors, large Colonial Family Room with walk-in fireplace w/kettle crane, Plastered walls, some open beamed ceilings Laundry/2nd kitchen for canning and or extra work area on the 1st floor. This property features an old bank barn with attached Blacksmith shop, Tack room and a nice sized 2 box stall horse barn with hay loft. The drive is Cobblestone from Lancaster City Streets. There is a kidney shaped in ground pool and pump & filter system building. This property has loads more than is described here, so come take a look

This property features many Historical pluses. There is a foundation from the old Ice House plus the OLD LOG HOUSE which is boarded up but could be restored for Historical value and interests. Repair the dam breast and have a beautiful pond

This property has in-home business potential, handyman work shops, antique shop (if zoning permits) plus anything you may dream of that's permissible

Full Listing of personal property at a later date. Watch the papers.

Terms: 10% day of Auction. Bal. On or before January 16, 2000.

OPEN HOUSE: SUNDAY, OCTOBER 17, 1999 from 2:00 PM till 4:00 PM.

Sale by:

**Richard R. & Cheryl W. McCune**

**SANFORD G. LEAMAN, CAL. AUCTIONEER**  
AU-532-L, PH. 1-800-836-8113

Good Food

## PUBLIC SALE

**SATURDAY, NOVEMBER 20, 1999**

At 9:00 A.M.

**TRACTORS, FARM EQUIP., RIDING MOWER, ROTOTILLER, ANTIQUES, HOUSE ITEMS, TOOLS, MISC.**

LOCATION: 15005 Round Hill Church Rd., Stewartstown, York Co., PA. From Red Lion take Rt. 24S ± 5 mi. to Reed Used Cars or from Stewartstown take Rt. 24 N ± 5 mi. to Reed Used Cars. Turn onto Church Rd. for 2.6 mi. Turn R onto Round Hill Church Rd. for 1.1 mi. to lane on L. Follow signs.

**TRACTORS, FARM EQUIP., RIDING MOWER, ROTOTILLER**

1972 JD 3020 Dsl. w/NFE, synchro-range shift, side console, dual hyd, 4290 orig. hrs., excellent tin, one owner. Ford 801 Select-O-Speed w/WFE, PS, 3 Pt., power adjust whls., whl. wts., excellent tin, one owner. Brillion 3 pt. 9-tooth high clearance chisel plow. JD 412 3 pt. 2 btm. 14" plow. Ford 3 pt. 6' scraper blade. Ford 3 pt. cultivator. JD 953 flatbed wagons w/sides - 14' & 16'. JD 10 3 pt. sprayer. Sauder hyd. loader. Sauder 7' snow blade. 3 pt. hyd. wood splitter. JD 350 7' sickle bar mower. 3 pt. carry all. 2-whl. farm trl. 2 JD high press cyl. Ford hyd. cyl. JD flat front wts. JD rear whl. wts. JD 110 8 HP riding mower w/38" deck. Tractor chains: 15-5-38 & 13-5-28. Troybuilt 6 HP rototiller.

**HAY, STRAW, UREA**

OLD HAY: +60 bales Timothy, ±200 bales clover. ±75 bales OLD wheat straw. 6 bags urea.

**ANTIQUES, HOUSE ITEMS**

Pine items: table, cupboard, feed box. Columbia cookstove, walnut kitchen table, walnut library table, oak dresser, oak wash stand, oak stand, PB glasses, porcelain coffee pot, bear banks, sewing items, sprinkling cans, egg baskets, feed scoop, meat saw, Greens milk box, sled, chick crates, egg scale, kerosene lamps, cream can, milk cans, wash board, school desks, treadle grindstone-NICE, hay forks, corn choppers, nail kegs, adv. cans & items, Howe brass beam platform scale, crocks, child's metal porch chr., redware kitchen pieces, few pcs. green Depress, McCoy planters, JD & Oliver rain gauges, JD yardstick, JD whl. wrenches, JD blue oil can. WH washer, kitchen cabinet, flower stands, Frig. refrig. WH elect. stove, Revco chest freezer, wood stove, book cases, pots, pans, elect. appl. dishes & more.

**TOOLS, MISC.**

60" 7" Endless belts. port air comp. Echo CS5000 chain saw, Echo weedeater, 275 gal dsl fuel tank - 3/4 full, garden cultiv., Crftsman bench grinder, Craftsman elect drill & socket set, B&D items. Skil saw, drill & grinder. post vice 32' alum & 40' wood ladders, whlbarrow, wrenches, log chains, hand tools, garden tools, block & tackle, pile coal, t&g barn siding, cement blocks, chestnut beams, pine & oak lumber, MANY chicken: nests, feeders, waterers. Scrap iron pile

INSPECTION OF ITEMS: Weekend before & day before sale ONLY.

AUCTIONEERS NOTE: Tractors & equip are in NICE condition.

ORDER OF SALE: Starting w/wagon load sm. farm items. Tractors, equip., lg house items/furniture will not be sold before 12 noon. May be selling with 2 auctioneers for part of sale.

TERMS: Cash or approved check Out of state cks MUST be cleared w/auctioneer

OWNERS:

**DANA & IONE HERSEY**

AUCTIONEERS: Rick Foreman, 1163L  
Ralph Brenneman, 708L  
717-741-1728

REFRESHMENTS SERVED. OWNERS & AUCTIONEERS NOT RESPONSIBLE FOR ACCIDENTS.

## 2 DAY PUBLIC AUCTION

**FRIDAY, NOV. 12 @ 9:00 AM**

**FARM EQUIP. & TOOLS**

**FRIDAY, NOV. 26 @ 9:00 AM**

**54 ACRE FARM AND HOUSEHOLD**

**FROM THE ESTATE OF THE LATE GUY KRILL**

LOCATION: West end of Frystown, PA Berks Co. From exit #2 of I-78 take Rt. 645 south 1 1/2 miles to blinking light, turn right, go 1/4 mile to sale on left. From Rt. 422 in Myerstown take Rt. 645 North 8 miles to blinking light in Frystown, turn left, sale 1/4 mile on left.

**SELLING ON NOVEMBER 12 - FARM EQUIP. & TOOLS:**

1984 F-250 pickup truck 4x4, 71,000 miles; army generator-model MEP 0 17-A KW 5.0 (gas); 5 hp log splitter; Forney welder; air compressor; bench grinder; power tools; lots of hand and farm tools; fence chargers; farm gates; iron cattle crossings; tractor wts.; metal fence post; extension ladders; about 800' of 2 1/2 irrigation pipe; cast iron hog troughs; chicken crates, assorted old wooden boxes; piles of rough cut lumber; platform scale, hoist; hydraulic cylinders; 2 cord firewood; 38" tractor tires; tractor umbrella; drum of grease and pump; chains; oiler; cattle head gate; Brock feed bin; Farmall 350 diesel N.F. tractor. Farmall M; John Deere 7' 3 pt. Bush Hog; Clark Bobcat skid loader M-610; IH 1150 grinder mixer; McCurdy gravity bin wagon; 2 bale wagons; silage wagon; I.H. #46 baler; hay rake; I.H. 2 bottom trl. plow; F.H. 2 row corn planter; F.H. cultivator; 10' transport disk; 8' pull disk; 4 bottom plow; N.H. 510 manure spreader, I.H. 350 1 row harvester with corn hd; sub soiler; 10' cultipacker; Spinner fertilizer spreader; John Deere hay fluffer. IH #30 belt dr. corn sheller; 200 gallon field sprayer, F.H. 2 bottom plow; F.H. 7' sickle bar mower; flail chopper; NI #325 two row cornpicker; FH post hole digger; F.H. 3 bottom 16' plow, Badger electric bedding chopper (3 hp), grain aerator; #550 I.H. chopper with corn hd; N.H. 28' bale elevator; 2 hole corn sheller, pile of scrap iron.

AUCTIONEER'S NOTE: Sale held rain or shine. Two wagons of tools, followed by small row items, farm equipment around 12 noon. For information about the farm call Nelson at (717) 866-4286

Sale for

**GERALDINE KRILL**

Tom Cooper, Attorney



Auctioneer:  
Dwight D. Miller AU002414-L  
Bethel, PA 19507  
(717) 933-5736