

Sale Reports

CONSIGNMENT SALE

A public consignment sale was held Oct. 23 at Little Ike's Auction House, Inc., 150 Mt Top Rd., Dillsburg, Pa.

Some prices were Flinchbaugh #2581 4 hp gas engine \$4900, JD B tractor \$1800, Farmall Cub tractor \$1700, Int Scout \$425; '86 Renault Alliance convertible \$700, two-seater carriage \$1050, Doctor's buggy \$550, Yardman 7 hp electric start self-prop snow blower \$750, Sears air compressor \$50, Troy Bilt riding mower \$700, 4 hp rototiller \$22, table saw \$50, and Aunt Jemima cookie jar "Washing Clothes" \$45

Little Ike Eichelberger was the auctioneer

SHENK SALE

A public sale of tractors and farm machinery was held Oct 23 by Sam and Barb Shenk, 150 Meadows Rd., Newville, Pa

Some prices included: JD 4050 tractor, \$27,400; JD 3020 tractor \$10,900, JD 4020 tractor \$6,900, JD 2510 tractor \$5,200, Bobcat skid loader \$9,200, NH round baler \$6,000, Badger liquid wagon \$2,700 and 2 hay wagons \$1,000 each

Rick Foreman and Ralph Brennenman were the auctioneers

KIEFFER SALE

A public sale of real estate was held Oct 23 by Wilmer E Kietter, 505

North Railroad Ave., and Huyard Rd., Earl Twp., Lancaster Co., Pa

The rancher and 4-car garage on approximately 1 acre brought \$110,000 and was sold to Jack Buch of New Holland, Pa

PEDERSON SALE

A public auction of real estate was held Oct. 23 by Clifford M Pederson, north of Honey Brook on the corner of Rt 10 and Poplar Road in Chester Co., Pa.

The 4.5 acres with 6421 frontage on Rt. 10 and 306' frontage on Poplar Rd., was sold for \$23,000

Horning Farm Agency, Inc managed the sale.

GRIM SALE

A public auction of farm equipment and guns was held Oct. 23 by Randy Grm, 401 Harrisburg St., East Berlin, Pa

Some prices were: 1996 Case 580L Extendahoe 4x4 \$45,000, Farmall H tractor \$1125, Farmall Cub tractor \$2000, Grasshopper 718K commercial lawn mower \$3700; Honda "Big Red" 3-wheeler \$900; Golden Acres hybrid seed sign \$100, Remington 700 7mm rifle w/scope \$520 and Tompson Center Contender 30-30 \$400

Stermer's Auction Service managed the sale.

MOYER SALE

A public auction of personal property was held Oct. 23 by Kenneth and Emily Moyer, 4 miles west of Paxtonville, Pa. in Snyder Co

Some items sold were: turkey on nest \$230; Majolica plate \$100; Gibson steel guitar & amp \$575; Good Boy bucket

\$380, cherry corner cupboard \$825, walnut chest of drawers \$450, JD toy tractor \$140, jelly cupboard \$325 and Mammy's favorite coffee tin \$170

Hassinger & Courtney conducted the sale

YODER SALE

A public sale of real estate was held Oct. 22 by

Alfred and Beth Yoder, R.D. McClure, Pa. in Spring Twp

The 87-1/2 acre farm with a 3 bedroom house and

a large barn was sold for \$150,000.

Hassinger & Courtney managed the sale.

REAL ESTATE AUCTION

Thompsontown, PA
SAT., NOV. 13, 1999
3:00 PM

Located in Juniata County along Route 333 (Mountain Road), 2 miles west of Thompsontown and 10 miles east of Port Royal

Ski Snow Peak Lodge

2.0661 acres surveyed lot with recently-built two-story frame dwelling, attached A-frame addition, drilled well, sewage, electric heat and 200 amp service. Dwelling offers over 2300 square feet living space, cathedral ceilings, 24'6" x 30' basement garage with overhead door, 16'x20' two-story deck and 4'x52' front balcony. Interior includes large kitchen with adjoining dining room, 14'x32', living room with two mile view of Pennsylvania Railroad, two full baths, one half bath, five bedrooms with closet space, laundry room and more. Property is located at the foot of the Tuscarora Mountain and sits parallel to the Juniata River. A must-see property for the train buff, photography connoisseur or great outdoorsman.

Real Estate Terms: \$5,000 down payment day of sale with cash or certified check payable to the auctioneer. Balance due in 45 days.

Showing by Appointment - Call (717) 527-2458 or (717) 436-9594

William E. Wright, et al, owners
HCR 67
Mifflin, PA 17058
(717) 527-2458

Bryan D. Imes, Auctioneer
RR 1, Box 902, Port Royal, PA 17082
(717) 527-2449
AU-001656-L

PUBLIC AUCTION VALUABLE REAL ESTATE

TRACT #1 - 27 ACRE FARM ZONED AG
TRACT #2 - 13 ACRE TRACT ZONED RLD
TRACT #3 - 5 1/2 ACRE TRACT ZONED AG
PLEASANT VALLEY RD. - EAST EARL
THURS., NOV. 18, 1999
1 PM

LOCATION: 155 Pleasant Valley Rd., East Earl From Rt 23 take Rt 625 N toward Bowmansville Turn left on Pleasant Valley Rd., pass Bowmansville Mennonite Church to farm on left

TRACT #1 FARM consists of 2-1/2 story early sandstone & limestone dwelling with kitchen, dining rm, living & family rms., 4 bdrms & full bath, attached laundry, full bsmt & attic area. Detached bldg w/walk-in fireplace. Detached frame 2-car garage & various out buildings. BARN is 2 story stone & frame bank barn w/attached tobacco shed & equip building, 12'x55' stave silo. LAND consists of 27 Acres more or less with approx 20 acres tillable & balance pasture w/stream Zoned Ag District

TRACT #2 consists of tract of land with approx 13 acres zoned Residential Low District, with over 1500' frontage along Pleasant Valley Rd., ideal subdivision potential (possibility that public sewer would be available for this tract)

TRACT #3 consists of tract of land with approx 5-1/2 acres zoned Ag District with approx 688' frontage along Pleasant Valley Rd., subdivision potential

NOTE: Great opportunity to purchase country properties at Public Auction. Farm offers great rural setting with house and bldgs set back from road. Tract #2 & 3 offer subdivision potential. Quiet rural location. Inspection by appt or Open House Sats., October 30, November 6 & 13 from 1 to 4 PM. Terms 10% down balance March 30, 2000. For brochure, land plotting, financing, etc call Auctioneers 717-733-1006

EARL B. MARTIN &
ADA B. ZIMMERMAN
TRUSTEES - AMOS B. MARTIN TRUST
717-354-0680 or 717-445-4606
Linda Kling, Atty.

Auction Conducted By
Randal V Kline, Lloyd Kreider &
Roy Good, Jr., Auctioneers
Lic #499 - #2116 - #513
717-733-1006



7th Annual
TOY SHOW
SAT., NOV. 13, 1999
9:00 A.M. to 2:00 P.M.
MASON-DIXON AUTO AUCTION
GREENCASTLE, PA
Take I-81 to PA Exit 2 (Rt. 11 North)
TRUCKS * CARS
BANKS * BARBIES
RACING COLLECTIBLES
FARM & CONSTRUCTION
GAS STATION PROMOS
ACTION FIGURES
FAST FOOD COLLECTIBLES
& MORE
Admission \$2.00
Children Under 12 FREE
For Information Call:
Dale Martin (301) 797-4428

400+ Carriages

BREWSTER • HEALEY • STUDEBAKER COACHES • COMPETITION CARRIAGES
• COMMERCIAL WAGONS • PLEASURE DRIVING CARTS & CARRIAGES
STILL TAKING FIELD CONSIGNMENTS - CONSIGN NOW!

FRIDAY, NOVEMBER 12 & SATURDAY, NOVEMBER 13, 1999

LEBANON FAIRGROUNDS • LEBANON, PENNSYLVANIA

World's Largest Auction of Horse Drawn Vehicles, appointments & misc. horse related items to be sold in two days.

FRIDAY, NOVEMBER 12, 1999

Due to the size of the catalogued sessions of horse drawn vehicles, books, prints and fine appointments, WE WILL BE SELLING ALL DAY WITHOUT ANY BREAKS BETWEEN SESSIONS AND STARTING AT 3:00 PM - a second auction ring will start with books and prints.

9:00 AM - INSIDE MAIN AUCTION BUILDING - 247 CATALOGUED Coaches, Carriages & Sleighs
3:00 PM - CATALOGUED Books, Periodicals & other equine related Paper Matter framed Pictures and Prints

Approx. 5:00 PM - Immediately following the last carriage - Approx 490 Lots of Fine appointments and collectibles

Catalogues available including photos and descriptions of all vehicles, and listings of all sessions on Friday (books, prints & pictures, fine appointments, etc) - U.S. \$20.00 (Pick-up) or \$23.00 mailed Priority Mail, Overseas and Canada (US Funds Only) \$25.00 each, airmail.

SATURDAY, NOVEMBER 13, 1999

9:00 AM - Section 1 & Carriage Tent - Rows of horse drawn coaches, carriages, sleighs & wagons
9:00 AM - Section 2 - In the rows - Many Non-horse related items including primitive & carpenter tools, advertising memorabilia

9:30 AM - Special Tent Session - Overflow of appointments unable to be accepted for Friday evening's session

10:00 AM - (Under tent) - Collection of Pedal Cars, toys, primitive tools, goat carts & other collectibles

10:00 AM - (Under tent) - Saddle Session including side saddles, western, english etc Following saddles, Western Memorabilia including western bits, spurs, etc

10:30 AM - Regular tent session with carriage & wagon lamps, harness, lap robes, livery, tack, miniatures & many other horse related items & collectibles

11:00 AM - (approx.) Under tent - Collection of over 200 Bits

11:00 AM - (under tent) - Harness - Pony, cob, horse & draft horse sizes single pairs 4 in-hand & others

12:00 Noon - Rows of horse related items, carriage & wagon parts, horse drawn farm equipment, wagon wheels, spring seats, new wagon bows, blacksmith tools, and many other items

12:00 Noon - Trucks, Trailers, Horse and Ponies

PLEASE NOTE Field items accepted until the start of the auction on Saturday morning (No prior deadline) NO JUNK, PLEASE!!

SPECIAL CONSIGNMENT

The horse bit collection of Eleanor M Case (deceased) from Balls Mills, PA Mrs Case was a well respected, well-known horse expert in the Lycoming County area. The collection of over 200 bits includes coaching & driving bits, riding, western curve bits, Pelham bits, kimberwicks, antique Rockwell driving bits, Morgan police bit, hackamores, bronco pressure bit w/original literature on how to use, silver western show bits, bradoons and overchecks, polo bits, western lady leg bit, to name a few. Also, harness brasses, several rosettes, antique boot trees w/English riding boots

Selling Sat Morning

Friday Catalogue Sessions Closed, But We're Still Taking Consignments for the Field Session!

TERMS & CONDITIONS: BUYERS PREMIUM • 6% ON ALL ITEMS SELLING FOR \$1,000 & OVER (PER ITEM) • 10% ON ALL ITEMS SELLING UNDER \$1,000 (PER ITEM) CASH, TRAVELER'S CHECK, CERTIFIED CHECK, MONEY ORDERS, US FUNDS ONLY All bidders must register at auction for a bidder's number Personal or business checks accepted only with a current bank letter of guaranteed payment made payable to Martin Auctioneers, Inc

AUCTION SITE TELEPHONE
Week of Sale 717-228-2828

RECEIVING TIMES - WEEK OF AUCTION

Tuesday, Nov 9 - 12:00 Noon to 6:00 PM

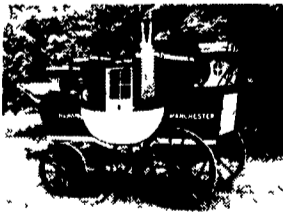
Wednesday, Nov 10 - 9:00 AM to 6:00 PM

Thursday, Nov 11 - 9:00 AM to 6:00 PM

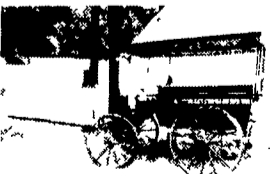
Friday, Nov 12 & Saturday Nov 13 - 8:00 am until start of auction



Wicker Infant Saddle



Restored English Road Coach



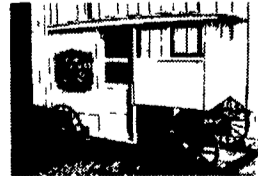
Wagonette



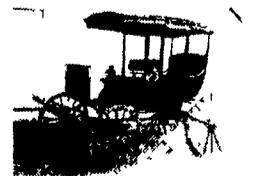
Dairy Delivery Sleigh on Bob Runners



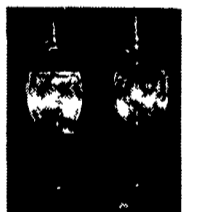
Restored Fire Wagon (Orig Wisconsin 4-cyl Engine)



Milk Delivery Wagon



Restored Summer Rockaway



Large Lamps Signed "White Mfg Co" for Brett, Landau, Barouche, Etc



Harness, Bridle, Saddle Racks



Manure Spreader (field session)



Auctioneers
Paul Z. Martin, Jr - AU1863L
Roger Spencer - Auctioneer AU1454L
Patrick Morgan - Auctioneer AU3557L

Martin Auctioneers, Inc.

12 North Railroad Avenue • P.O. Box 99 • New Holland, PA 17557
Phone: (717) 354-6671 • Fax: (717) 354-8248

PA-AY-000144L • CA-879 PA-AU-0001863L • NC Lic #4626

STATEMENTS MADE DAY OF SALE TAKE PRECEDENCE OVER ALL PRINTED MATERIAL

