



**(22) (19) 1987 White, 320 HP, Detroit, 9 Speed, Air Ride Cab, P/S, S/A and Some With Tag Axle, Eaton 3.70 Rears, 295/75R22.5 Tires**

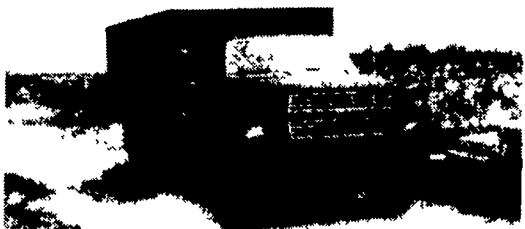
**\$4,800 and Up**

**LEID DIESEL SERVICE**

Service - Sales - Parts

Specializing in Detroit Diesel

237 Green Hill Road, Newville, PA 17241  
Phone 717-776-7725 Fax 717-776-4127



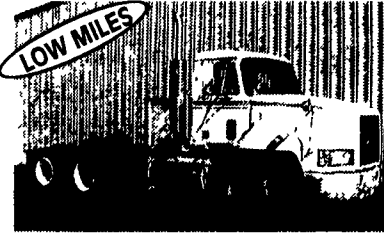
**1987 Ford F800**

16' Grain Body Dump  
185 HP Diesel 50,000 miles  
Air Brakes 5 spd. & 2 spd. Rear

**\$19,900**

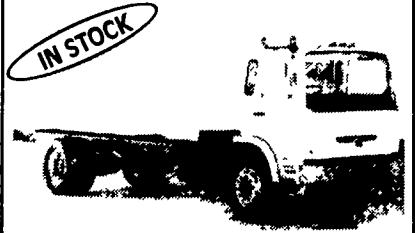
**610-857-1816**

**ALL STAR**  
Used Trucks



**1995 MACK CH613**

EM7-300, T2060-6 Spd, 38,000 lb - Camelback, 187 inch WB, 288,505 miles



**(1) 2000 MACK MS250P**

Chassis, E3-190, 4106A-6 Spd, 12 Front, 21 Rear Axle, 217 W.B.



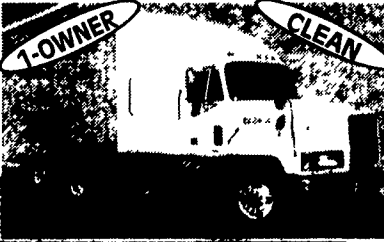
**1984 MACK RWS713**

E9-500, 10 Speed, Air-Ride, 3.78 Ratio, 242 in. W.B., 11R24.5, Alum. Disc, No Power Steering



**1988 MACK R-MODEL**

E6-350, T-2090, 9- Spd., Camelback Suspension, 4:42 Ratio, 11R22.5 Tires, Steel Disc Wheels



**Includes 200,000 Mile Engine Warranty,**

**All Trucks Have Been Run on Dyno.**

20 - 1995 E7-350 RTLO14610B  
10 Spds, DS404 - 3.90R on Air  
Steel Disc Hub Pilot, 295/75R 22.5  
192 WB, 42" Highrise, 440,000 Miles

**LESHER Mack**



**SALES & SERVICE**

2700 Cumberland Sts. Lebanon, Pa. 17042  
(Route 422 West)

**717-273-4535**

**PRE-OWNED CARS PRE-OWNED TRUCKS PRE-OWNED MPV'S**

<b>'98 FORD TAURUS SE SDN</b> A/C, A/OD, AM/FM Cass.,	<b>'97 FORD F150 XL</b> 4x2, S/Cab, A/C, A/OD, 4.6L V8, AM/FM Cass	<b>'96 CHEVY BLAZER LS</b> 2 Dr Auto, A/C, 4x4, 6 Cyl, PB, PW, PL, Cruise, Tilt, AM/FM Cass
<b>'99 FORD ESCORT ZX2</b> 2 Dr, 4 Cyl, 5 Spd., AM/FM, Cass A/C, Power Window and Locks	<b>'95 MAZDA</b> B4000 S/Cab, 4x4, 4 Spd, A/C, 6 Cyl, 4 OL AM/FM Cass	<b>'97 FORD EXPLORER</b> 2 Dr. A/C, 5 spd, AM/FM Cass, Cruise, Tilt
<b>'96 FORD CONTOUR SPORT SDN</b> A/C, 5 SPD, AM/FM Cass, "Super Clean - Neat!!"	<b>'97 CHEVY K3500 DUMP TRUCK</b> 5 7L, V8, 4x4, Auto, Super Low Miles	<b>'97 FORD E150 CONVERSION VAN</b> 4 6L, 6 Cyl., Automatic, Dual A/C, 4 Captain's Chairs
<b>'95 LINCOLN TOWN CAR</b> Executive Series, A/C, A/OD, Fully Equipped	<b>'98 FORD F150</b> 4x4, A/C, 4 6L, Auto, Reg Cab, 8 Ft Bed, AM/FM Cass	<b>'98 JEEP WRANGLER</b> Sahara, A/C, 5 Spd., Hard & Soft Top, AM/FM Cass
<b>'93 TOYOTA CAMRY</b> LE, A/C, AM/FM Cass, Automatic, 6 Cyl, Cruise, Power Window & Locks	<b>'95 FORD F150</b> 4x4, XLT, A/C, 5 Spd., Cruise, Power Windows & Locks, AM/FM Cass, Tilt, 4 9L, 6 Cyl.	<b>'97 FORD EXPEDITION</b> XLT, 9 Pass., A/C, A/OD, AM/FM Cass, 15,000 Miles
<b>'97 FORD ESCORT LX</b> A/C, A/OD, AM/FM Cass. "SDN", 7,000 Miles, Super Nice"	<b>'93 CHEVY 1500 4x4</b> Silverado, A/C, A/OD, AM/FM Cass., V8, Low Miles, w/Cap	<b>'97 FORD AEROSTAR</b> AWD, XLT, 2-A/C, A/OD, 6 Cyl, Extended Length, AM/FM Cass, "22,000 Miles"
<b>'98 CHEVY CAVALIER</b> AC, 5 Spd, 2 Dr, AM/FM Cass, Local Trace	<b>'97 FORD F250</b> S/C, XLT, A/C, 4x4, A/OD, 7 3L, V8, Power Stroke Diesel, AM/FM, Disc, Tilt, Cruise	<b>'96 JEEP GRAND CHEROKEE LAREDO</b> A/C, A/OD, AM/FM Cass, Cruise, Tilt, Power Windows & Locks, 27,000 Miles
<b>'97 FORD CROWN VICTORIA</b> LX, A/C, A/OD, AM/FM Cass, 5000 Miles	<b>'95 FORD RANGER STX</b> S/Cab, 6 cyl, 5 spd, Cruise Control, Tilt 4x4, A/C, AM/FM Cass.	<b>'99 DODGE D2500 CARGO VAN</b> A/C, Auto, AM/FM Cass., V8, Movable Windows, 2 Extra Bucket Seats, "4,000 Mi."

**ENGLE-RISSINGER AUTO GROUP**

FORD \* LINCOLN \* MERCURY \* JEEP

Midway Between Halifax And Millersburg • 717-896-3421 • 1-800-242-8075

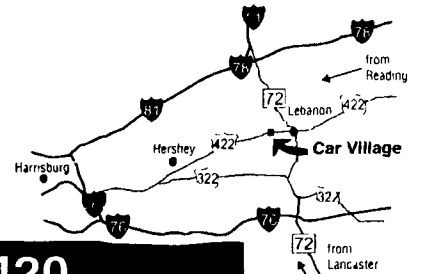
HOURS: Monday-Friday 8:30 AM - 8:30 PM: Saturday 8:30 AM - 3:00 PM

**Business Hours:**  
Mon.-Fri. 9 to 9;  
Sat. 9-4

2300 W.  
CUMBERLAND ST.  
(Rt. 422)  
LEBANON, PA 17042  
(Across From  
Lebanon Valley Mall)

**CAR VILLAGE**

**HEAVY DUTY TRUCKS**



**PHONE 717-274-2000 Toll Free 1-800-650-1420**



**TOW MACHINE 94 FORD F350 CREW CAB DUALY**  
Looks Good, Runs Great, Powerstroke Diesel, 5 Sp, A/C, Tow Pkg, 4 10 Gears, Only 54,000 Miles



**360 MAGNUM V8 97 DODGE 2500 4X4**  
Heavy Duty 3/4 Ton, 5 Sp. Trans., A/C, Vinyl Seat & Floor, Only 49,000 Clean Miles  
**\$18,900**



**4x4 CREW CAB DUALY CHECK IT OUT 95 FORD F350 CENTURION** Hard to Find, Great To Own, Powerstroke Turbo Diesel, 5 Sp., A/C, Capt. Chairs, TV, VCR, Gooseneck & Class 3 Hitches, 4:10 Gears, Ready To Tow



**A BEAUTY 97 FORD F250 SUPER CAB 4X4**  
Heavy Duty 8800 GVW, Power Stroke, Turbo Diesel, AT, A/C, Loaded XLT, Tow Pkg, 4 10 Gears, Only 38,000 Miles



**4X4 CLUB CAB - 96 DODGE 2500 SLT LARAMIE**  
Strong Cummins Turbo Diesel, AT, A/C, Trailer Tow Pkg, Chrome Wheels, Runs & Looks Good



**CUMMINS TURBO DIESEL 4X4 HEAVY DUTY DODGE 3/4 TON**  
**3 AVAILABLE**  
97 5 Sp. - 41,000K  
96 Auto - 46,000K  
95 Auto - 51,000K  
All Are Very Nice & Clean  
All Have Remainder New Truck Warranty



**4x4 CREW CAB DUALY, 96 GMC K3500 SLE SIERRA**  
Tow in Style, Only 45,000 Miles, High Output 6.5 Turbo Diesel, AT, A/C, Gorgeous, Very Comfortable, Leather Interior, 4:10 Gears, Tow Pkg.



**FLOW TRUCKS 2 TO CHOOSE FROM 79 CHEVY - 79 DODGE**  
Call For Details



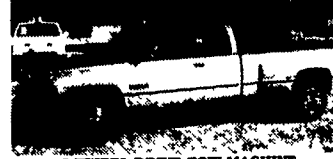
**1 TON SUPER CAB 99 FORD F350 4X4**  
6 Sp. & Powerstroke Turbo Diesel, A Great Combo, Loaded XLT Lariat, Capt. Chairs, Console Tow Pkg., Aluminum Wheels, Only 300 Miles, New Tk Warranty Remaining



**460 GAS THE NICEST ANYWHERE 97 FORD F350 4X4**  
Perfect, Only 9,000 Miles, Solid Front Axle, Strong 460 I I Auto, A C, Aluminum Wheels, You Must See



**TOW MACHINE 96 DODGE CLUB CAB DUALY**  
4 Wheel Drive, Super Strong Cummins Turbo Diesel, AT, A/C, 4:10 Gears, All Options, Real Good Looker, \$11,000 Miles



**2 WHEEL DRIVE TOW MACHINE, 97 DODGE 3500 CLUB CAB DUALY**  
Cummins Turbo Diesel, AT, Loaded, All Power Options, Only 57,000 Miles, 4:10 Gears, Heavy Duty Tow Pkg, Very Hard To Find, 2 Wheel Drive Tk



**AWESOME POWER 99 FORD F350 CREW CAB DUALY**  
4 Wheel Drive, Like New Only 800 Miles, Powerstroke Diesel, AT, A/C, Capt. Chairs, Console, Aluminum Wheels, 4:10 Limited Slip, Heavy Duty Tow Pkg.



**SUPER CAB MECHANICS TRUCK**  
96 CHEVY C2500 8 Ft Mechanics Body Vortec 350 V8, Auto, A/C, Vinyl Seat & Floor, Ladder Rack, Only 45,000 Clean Miles \$19,900



**86,900 MECHANICS TRUCK 98 GMC**  
350 V8, AT & Ft. Bed, 78,000 Original Miles



**4x4 SUPER DUTY 99 FORD F450 CHASSIS**  
Long 161 W.B. 84" C.A., Powerstroke Turbo Diesel, AT, A/C, Only 6,000 Miles, Remaining New Tk. Warranty



**GAS ENGINE - 99 FORD F250 SUPER CAB 4X4**  
Beautiful Truck, 5.4 Litre, 6 Spd. Trans., A/C, All Power Options, Capt. Chairs, Console, Limited Slip 4:10 Gear, Tow Pkg., 14,000 Miles, New Truck Warranty  
**\$28,900**



**12 FT. BOX TRUCKS**  
95 Chevy HD 3500 Turbo Diesel, AT, A/C, 56K  
94 Ford Super Duty 450 Turbo Diesel, AT, 30K



**95 CHEVY C3500 ENCLOSED MECHANICS BODY**  
Nice & Clean, Only 50,000 Miles, 8 Ft Reading Box, High Output, 6 5 Turbo Diesel, Ladder Racks, Tow Pkg \$17,900



**HEAVY DUTY DUMP, 97 CHEVY HD 3500**  
Big 15,000 GVW, High Output, 6 5 Turbo Diesel, AT, 28,000 Original Clear Miles



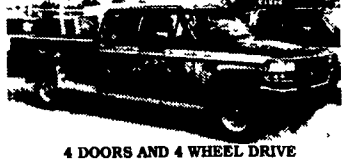
**460 SUPER CAB 4 WHEEL DRIVE 94 FORD F250 XL**  
Heavy Duty 3/4 Ton, Extra, Extra Clean, Only 51,000 Miles, Captain Chairs, Tow Pkg, A Truck You Must See



**POSITIVELY THE NICEST ANYWHERE! 97 DODGE CLUB CAB 4 WHEEL DRIVE**  
Don't Look Any Further, This Is The One Cummins Diesel AT, A/C, Loaded, All Options, Only 20,000 Miles



**TRAILER TOW MACHINE-AWESOME IMPRESSIVE 98 DODGE 3500 DUALY 4X4**  
Strong Cummins Turbo Diesel, AT, A/C, Heavy Duty Tow Pkg, Chrome Wheels, A Real Good Looker



**4 DOORS AND 4 WHEEL DRIVE 97 FORD F350 CENTURION PKG**  
Dressed To Kill, Only 16,000 Perfect Miles Powerstroke Diesel, AT, Loaded, XLT, 4 10 Gears, Great Tow Machine