

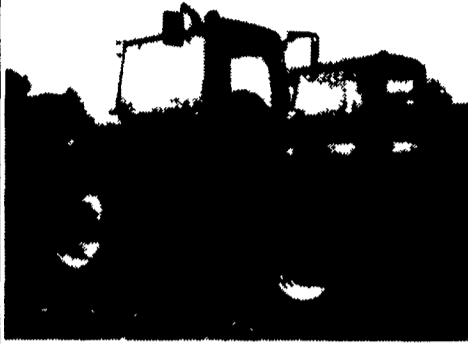
BINKLEY & HURST BROS. INC. - YOUR DEALER WITH GREAT SELECTION AT DISCOUNT YEAR-END PRICING! LET'S GET TOGETHER TODAY!

717-626-4705 • 1-800-414-4705

Ask About Fast, Easy, and Good Financing Plans With Credit Approvals. Stop In Soon!

QUALITY HARROWS

You Won't Find 'Em Much Nicer!
Case IH Model 8930 4x4 Magnum
with Dual Shaft 540-1000 PTO,
Rated 180 HP



1997 Model with Large Flotation 710/70/38
Firestone Radials on Rear and 480/70/30 on
Front MFD Axle, Loaded, Only 653 Hours.
Priced To Sell - Ask For Landis - Super Sharp!
UT 4376.

- 1) IH 656 HYDRO DIESEL WIDE FRONT. UT 4376.
- 2) MF 4X4 CAB MODEL 3545, 126 HP, Tractor with New 20.8x38, Front Fenders - \$21,500. UT 4250.
- 3) CASE IH MAGNUM 7120, Rated 150 HP, 4x4, Cab & Air, Air Ride Seat, 18 Speed Power Shift, Front Fenders, 3 Hyd. Outlets, 540-1000 PTO, 3 Pt. Quick Hitch, 14 Front Weights - \$48,900. UT 4288.
- 4) CASE IH MAGNUM 7110, MFD, Rental Return, Dyno Tested 150 HP - \$46,900. UT 3860.
- 5) ALLIS CHALMERS 7580, Articulated 4-Wheel Drive w/Cab & Duals - \$18,900. UT 4262.
- 6) CASE IH 2166, 4 Wheel Drive Combine, 1 Owner, 1996 Model Loaded. **MUST GO! PRICED TO SELL!**
- 7) CASE IH MAXXUM 5140, 2WD Cab & Air, 100 HP Class. UT 4094.
- 8) IH 3088, 2 WD with 4 Post ROPS. Ask For Rick. \$16,900. UT 4118
- 9) CASE 1070 4 POST ROPS, Approx 108 HP, 18 4x38 Rubber, One Owner - \$8,850. UT 4330
- 10) CASE IH MAGNUM 7220 MFD, Rated 155 HP, 1961 Original Hours, 1994 (One Owner) Dual Shaft 540-1000 PTO, 3 Hyd. Remotes, Optional Foot Throttle, Air Ride Seat. UT 4354.

- 1) GLENCOE 7 SHANK SOIL SAVER - \$1,750. UM 4275.
- 2) 12 FOOT ROCK FLEX MF MODEL 233 DISK HARROW with Hyd Lift Cyl., Decent Cond. - ONLY \$2,850. UM 4267.
- 3) SUNFLOWER MODEL 1232-21 LATE MODEL 21' ROCK FLEX DISK HARROW, Narrow Transport, Packer Hitch & Hoses - \$15,500. UM 4262.
- 4) KRAUSE 25 FOOT MODEL 4900 DOUBLE OFFSET DISK HARROW with 3 Row Coil Tine Harrow - \$14,000. UM4251.
- 5) RHINO 118 DOUBLE OFFSET ROCK FLEX, 18' Wing Disk Rebladed - \$6,950. UM 4078.
- 6) JOHN DEERE 230 22 Foot Wing Hyd. Fold Disk Harrow, Double Offset with C-Flex Hangers, Packer Hitch & Hoses, Good Paint - \$4,000. UM 4248
- 7) 3 PT. CASE IH 5700 9 Shank High Clearance Chisel Plow with 3" Curved Shovels, Very Good Cond. - \$1,850. UM 4252
- 8) GLENCOE 7 SHANK COULTER CHISEL (Stretch Frame - For More Trash Clearance) - \$2,750.
- 9) TRANSPORT UNVERFERTH, 20 Foot Folding Rolling Basket II Harrow with Leveling Tooth Bar - \$3,850. UM 4165.
- 10) CASE IH 3900, 21 Foot Disk Harrow, Looks Like New. Ask For Don Hoover - \$9,900. UM 4169.
- 11) 12 FOOT ROLLING BASKET HARROW in Very Good Condition. Come & See - Priced To Sell! \$2,000. UM 4099
- 12) JOHN DEERE 550 MULCH MASTER, 13 Foot. UM 4116.
- 13) Deep Till 30" Spacing Sub Soil Automatic Reset with Coulters UNVERFERTH ZONE BUILDER 4 Shank - Special \$5,900. NE 5499.
- 14) CHAIN LINK DRAG TYPE HARROWS, 12' Model - \$750.
- 15) GLENCOE FIELD CULTIVATOR Pull Type Hyd. Fold Wing Model and Hyd. Depth Control, 4 Transport Wheels, Good Shovels with Rolling Leveling Baskets, 28' Working Width - \$2,500.
- 16) GLENCOE PULL TYPE COULTER CHISEL, 11 Shank with Coulters and 4" Curved Shovels - \$4,250. UM 3993
- 17) KRAUSE 4900, 25 Foot Cut Rock Flex Disk Harrow, Good Condition (Super Deal) - \$16,500. UM 3967
- 18) SUNFLOWER 4301-5, Sunflower 5 Shank Auto Reset Ripper, Very Good Cond. - \$5,600. UM 4070.
- 19) USED HEAVY DUTY COULTER (LORENZ), for Cultivator - \$250.

USE IT OR LOSE IT



- 1) VERY GOOD CONDITION JOHN DEERE 1460 9'9" CUT DISC MOWER CONDITIONER with Rubber Conditioning Rolls (Ask For Landis). UM 4274.
- 2) 2 EZ TRAIL #672 RUNNING GEAR WAGONS with 205-8-10 Tires with Wood Rails for Header Transport \$600 Each. UM 4271 and UM 4272.
- 3) RICHARDTON 700 DUMP WAGON with Roof and 120" Tread Center. Nice. \$7,250. REDUCED TO \$6,900.
- 4) 2 USED GEHL BU. 990 FORAGE BOXES on Gehl Tandem Axle Running Gears, Variable Speed Drive - \$7,000 Ea.
- 5) NEW HOLLAND 718 FORAGE BOX with Roof & 3 Beaters on Tandem Axle Wagon - \$4,675.
- 6) SIDE DUMP RICHARDTON MODEL 700 FORAGE WAGON, 120" Tread Center. Buy Good Used & Save! \$7,250. UM 4210.
- 7) NEW HOLLAND MODEL 990W 7 FOOT HAY PICK-UP HEADER for Forage Harvesters Ask For Landis. UM 4263
- 8) KUHN 4101 RAKE - \$2,075
- 9) NEW HOLLAND 276 BALER - BEST OFFER. NICE!
- 10) NEW HOLLAND PULL TYPE 4-STAR HAY TEDDER Model 163, Good Cond - \$5,575. UM 4235.
- 11) NEW HOLLAND BIG SQUARE BALER 595, 3'x4' Size with Preservative Applicator, Like New (Baled Only 300 Bales) \$52,500. UM 4093
- 12) FARMCO 18' BALE THROWER WAGON on 11Lx15 Flotation Tires, Like New - \$4,675. UM 4205
- 13) NEW HOLLAND 254 RAKE TEDDER - \$2,350.
- 14) CASE IH 6380 Center Pivot, 12 Foot Pull Type Mower Cond., Like New Cond - \$44,000. UM 4176
- 15) NEW HOLLAND 489, 9 Foot Haybine - \$4,250. UM 4031
- 16) NEW HOLLAND 499, 12 Foot, Center Pivot, Haybine, Nice - \$4,850. UM 4095
- 17) GEHL 2-ROW NARROW CORN HEAD, TR3038 - \$4,050. UM 3923
- 18) JOHN DEERE 820 - 9 Foot Pull Type Mower Conditioner with Stub Guards, Mowed 400 Acres, Like New - \$8,050. UM 3970.
- 19) GEHL High Capacity 1000 RPM 1580 BLOWER - \$2,675. UM 3700.
- 20) 36 FT. SPEED KING ELEVATOR in Good Condition For Bales or Corn - \$4,575 OBO. UM 4009

SUPER DEALS ON PRE-OWNED USED PLANTERS!

Nice Clean John Deere 4-Row Planter with Liquid Fertilizer UM 3687

IH 800 6-Row Harrow With Monitor & Markers w/Hinged Tongue for Easier Transport, A Very Nice Clean Planter \$4,200 OBO UM 4122

- 1) KINZE MODEL 2000 4 ROW 30" with 3 Front Mount Pusher Units with 4 Corn Meters and 7 Bean Meters, Double Disc Openers for No-Till UM 4268
- 2) A.C. MODEL 333, 7-Row 15" Spacing, No-Till Planter with Double Disc Openers and Rubber Closing Wheels - \$2,900. UM 4261
- 3) KINZE MODEL 2300, 12-Row Swing Frame Twin Line with Dawn Trash Sweeps, Put a Bargain in Storage! UM 4243
- 4) NEW IDEA/KINZE 4-ROW 30 with Dry Fertilizer, Insecticide, Frame Mounted No-Till Coulters Price On Request. UM 4175
- 5) GREAT PLAINS 6030, 6-Row 30" Spacing, Dry Fert with Unit Mount No-Till Coulters, Radar Monitor, Planted Approx 400 Acres, Almost New - \$18,500. UM 4123
- 6) KINZE 2500 SWING FRAME Narrow Transport, 6-Row 30 No-Till Planter, Loaded with Fine Features (Plant Soybeans with this Planter) - \$20,900. UM 4106
- 7) 1997 KINZE 2600, 12-Row, Swing Frame for Narrow Transport with Liquid Fertilizer Priced To Sell! UM 3942
- 8) JOHN DEERE 7000 PLANTER, 6-Row with Liquid Fert., with Monitor & Insecticide - \$4,900. UM 4012
- 9) IH 800 6-ROW DRY FERT., 540 PTO., Super Deal - \$2,500. UM 4000
- 10) IH 800 6-Row Narrow with Liquid Fert., 1000 PTO, Monitor - \$3,750. UM 3708
- 11) JOHN DEERE 4 Row, 30" Spacing Model 7000 Conservation Planter with Monitor, Double Disc Openers, Dry Fert., Insecticide, Reconditioned - \$6,200. UM 3645
- 12) JOHN DEERE 4 ROW X 30 7000 PLANTER with Liquid Fertilizer Reconditioned - \$4900. UM 3687
- 13) IH 800 4-ROW PULL TYPE (Plate) Planter with Double Disc Openers and Dry Fertilizer Insecticide, Monitor and Hyd Markers, Good Cond Low Acres - \$2,800. UM 4161
- 14) KINZE 6-ROW BY 30" ROW SPACING PT Pull-Type Planter - \$6,500. UM 3913
- 15) JOHN DEERE 7000 6-ROW Conservation Planter, No-Till with Liquid Fertilizer - \$4,900. UM 4075
- 16) MODEL 385 DEUTZ ALLIS QUADRA-DISC, 6-Row 30" Spacing, Dry Fert., No Till with Insecticide - \$3,900. UM 4144

OTHER USED CONSTRUCTION EQUIPMENT MACHINES

- 1) CASE 450B 6-WAY DOZER, 6 Ton, 52 HP Beautiful, Tight Ready to Work Machine - Only \$15,800. UT 4351
- 2) WACKER TAMPER (Jumping Jack), BS 60Y, Very Good Condition
- 3) MASSEY FERGUSON DIESEL INDUSTRIAL LOADER TRACTOR with Shuttle Reverser, with New Pallet Fork in Addition To Bucket - \$3,850
- 4) CASE 580E 4X4 CAB LOADER BACKHOE EXTENNAHOE, Price Reduced From \$29,000 to \$20,500.
- 5) CAT 320N EXCAVATOR - Loaded!
- 6) CASE 586D FORKLIFT - \$16,300. UT 4368
- 7) LULL 844 EXTENDABOOM, 8000 Lb Lift Capacity Forklift, 4-Wheel Drive, JD Diesel
- 8) CAT D8H, 34 Ton Approx Weight with Straight Tilt Blade and Huge Single Point Ripper in Good Cond - \$29,800.
- 9) CATERPILLAR R80 DIESEL 8000, Rough Terrain Straight Mast, Free Lift Forklift, 21 Foot Height with Side Shifter, 2WD, 4 Post ROPS, Power Shuttle Reverser with Neutral - \$16,850. UT 4304
- 10) JOHN DEERE 644B ARTICULATED 4 WHEEL DRIVE LOADER with Cab, Rated 145 HP, 2-1/2 Yd Bucket and Forks with Grapple, Solid Running Machine, Well Tested on our Construction Site - PRICED TO SELL! UT 4378

Pre-Owned Kinze 1997 12-Row Swing Frame Planter



Loaded, Liquid Fertilizer, Planted Low Acreage Priced To Sell

New Holland 354 Grinder Mixer



UM 4229 With Auger Extension, Economy Priced To Sell!

John Deere 820 Mo Co



9 Foot Mower Conditioner, Stub Guards, Mowed 400 Acres, Like New! Price \$8,950 Oct. Special You Haul Away Only \$6,900!

Krause Model 4900 Rock Flex Disc Harrow Double Offset



UM 3967 25'2" Cutting Width, Transport 13'2", Good Blades, Packer Hitch, Pay A Lot Less Than New For This Quality Machine

Good Condition Cheap HP & Traction! Big Traction Articulated 4-Wheel Drive



UT 4262 A.C. 7580 with 3 Pt. Hitch, PTO, Dual Wheels, 3 Outlets, Cab & Air with New 134A Freon System, Good Straight Tractor, Serviced Ready to Work \$18,900

Don't Miss This One! Caterpillar Diesel 8000 Lb. 21 Foot Roller Mast Free Lift with Power Shuttle Reverser with Neutral



Model R80 Diesel w/48" Forks and Extensions 6-1/2' Length, Mast Tilts for Approx. 50% for Transport Clearance etc. - \$16,850

New Holland Model 306 Tandem Spreader



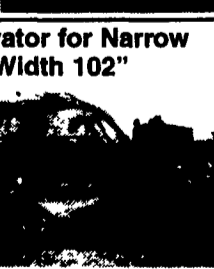
New Holland Model 276 Hayliner Baler with Thrower Best Offer Ask For Landis



1984 Case 586D Diesel Forklift



Cat 320N Excavator for Narrow Transport Width 102"



Can Be Hauled on 25 Ton Lowboy or Tag-along. Weight of This Machine Approx. 22 Ton, Cat 3066 T-Motor, 128 HP, 2 Speed Travel, Aux. Hyd. with Newly Installed Used Allied 750B Quick Attach Hammer and 2 Quick Tach Buckets, 32" Rock Bucket & 48" GP Bucket A Nice Clean Machine! Ready For Work! Great Finance Plans!



- 1) Very Good Condition CASE IH 2200 LOADER with Joy Stick Single Lever Controls and 6 Foot Bucket to Fit Case IH 385 Tractor and Other Similar Models Only \$2,400.
- 2) CASE IH 520 Q.T. LOADER, with 84" Wide Bucket Powered Off Tractor Outlets Off Of Case IH 5250 Tractor, Like New - Ask For Landis.
- 3) KINZE 640 GRAIN CART, Come & See! \$10,900 - Or Best Offer. UM 4173.
- 4) 20.8X38 AXLE MOUNT DUALS, Complete with Tires, Original of Case 1370 Tractor
- 5) ROSKAMP 1000 PTO CRIMPER BLOWER, for Hi-Moisture with Cob Breaker - \$3,600.
- 6) TRACTOR PULLED STEEL BOX HYD. DUMP TRAILER with 9' Long x 6' Wide Dump Body with Dual Wheels UM 4238
- 7) NEW HOLLAND 354 GRINDER MIXER with Auger Extension, 3 Screens. UM 4229
- 8) NEW HOLLAND 306 TANDEM AXLE V-TYPE MANURE SPREADER.

BINKLEY & HURST BROS., INC.

133 Rothsville Station Rd.
P.O. Box 0395, Lititz, PA 17543-0395
Located 1/2 Mile North of Rothsville

(717) 626-4705

www.binkleyhurst.com

1-800-414-4705
Fax 717-626-0996

© 1999 CASE CORPORATION
Visit us on the Internet at <http://www.casecorp.com>
Case IH is a registered trademark of Case Corporation

