

# LANCASTER COUNTY LIVESTOCK MARKET AUCTION

## Lancaster Livestock Monday, Oct. 18, 1999 Report Supplied By PDA

CATTLE	CALVES	HOGS	SHEEP	GOATS
MONDAY				
160	17	27	353	123
LAST WEEK				
169	11	0	329	129
LAST YEAR				
665	69	7	508	147

**CATTLE** Compared to Thursday, there were not enough slaughter steers, heifers or Holstein steers on hand for an adequate market test. Trading was moderate on the light supply. Slaughter cows were not well tested, but a good run of slaughter bulls sold fully steady. Supply included 18 percent slaughter steers and 9 percent slaughter cows.

**SLAUGHTER STEERS** Few Choice 2-4 1310-1415 lbs 67.00-69.35, package 1575 lbs 63.75. Select 1-3 1115-1415 lbs 60.75-63.50.

**HOLSTEIN STEERS** Few Choice 2-3 1550-1595 lbs 55.75-58.75.

**SLAUGHTER HEIFERS** Select and Choice 2-4 990-1275 lbs 60.00-64.75, double-muscled Belgian Blue 1010 lbs 75.25. Select 1-3 1040-1200 lbs 56.00-59.75. Heiferettes Commercial and Standard 2-4 990-1200 lbs 43.00-51.25.

**SLAUGHTER COWS** Not well tested.

**SLAUGHTER BULLS** Yield Grade 1 1240-1950 lbs 49.75-56.50, Limousin 1950 lbs 58.50, outstanding Charolais 1470 lbs 66.00. Yield Grade 2 1100-2100 lbs 42.00-47.00. Bullocks Select 1-3 925-1270 lbs 47.50-58.50.

**FEEDER HEIFERS** Medium 1 package 480 lbs 79.00.

**SLAUGHTER CALVES** Good and Choice 300-525 lbs 65.00-75.00.

**SHEEP** No comparison with last week due to holiday.

**SLAUGHTER LAMBS** Choice and Prime 2-3 60-80 lbs 85.00-90.00, 80-100 lbs 75.00-85.00, 100-120 lbs 74.00-75.00, few 120-135 lbs 72.00.

**SLAUGHTER EWES** Utility and Good 1-3 32.00-40.00. Aged Bucks 220-260 lbs 34.50-38.00.

**GOATS** All goats sold by the head. Billies Large 95.00-110.00. Nannies Medium and Large 45.00-50.00. Yearlings Choice and Prime 72.00-84.00. Kids Choice and Prime 45.00-52.00.

## Vintage Livestock Auction Paradise, Pa.

October 18-19, 1999  
Report Supplied By USDA

CATTLE	CALVES	SHEEP	GOATS
THIS WEEK	918	811	2
LAST WEEK	823	769	0
LAST YEAR	496	679	1

**CATTLE** Compared to Thursday's active market, slaughter steers sold steady to weak. Quality of supply was much plainer than usual and with stiff discounts on select carcasses, buyers were careful on questionable cattle. Holstein steers sold steady in a light test and slaughter heifers were not fully tested. Slaughter cows sold 3.00-4.00 lower in slow trading and slaughter bulls were steady to weak. There was a good crowd on hand for this month's special feeder cattle auction and trading was fairly active on the modest offering. Supply included 43 pct slaughter steers and 33 pct cows.

**SLAUGHTER STEERS** High Choice and Prime 2-4 1180-1460 lbs 69.50-73.50. Choice 2-3 1130-1500 lbs 67.50-70.60, few high dressing 1-2 up to 72.25, 1505-1540 lbs 65.25-67.00. Select and low Choice 2-3 1030-1515 lbs 63.00-67.50. Select 1-3 960-1400 lbs 58.75-64.50.

**HOLSTEIN STEERS** High Choice and Prime 2-3 1270-1530 lbs 60.50-62.35. Choice 2-3 1190-1525 lbs 56.75-58.50. Select and low Choice 2-3 1245-1510 lbs 54.50-57.00. Few Select 1-2 1380-1450 lbs 52.50-53.00.

**SLAUGHTER HEIFERS** Choice, few Prime 2-4 1055-1280 lbs 63.25-66.75. Few Select 1-3 1090-1250 lbs 56.75-57.75.

**SLAUGHTER COWS** PERCENT LEAN WEIGHT BULK

**LOW DRESSING**

Breakers 75-80 pct lean over-1400 lbs 38.00-40.75 35.25-39.00

Boners 80-85 pct lean over-1200 lbs 35.00-37.75 33.25-35.50

Lean (Hi-Yield) 85-88 pct lean over-1200 lbs 33.75-36.75 31.50-34.00

Lean 88-90 pct lean over-1000 lbs 31.75-34.25 28.75-32.25

Lean (Light-Wt) 85-90 pct lean 750-1000 lbs 28.75-31.25 25.00-29.75

**SLAUGHTER BULLS** Individual Yield Grade 1 1725 lbs 55.75. Yield Grade 2 1100-1885 lbs 41.75-46.75. Bullocks Select 1-3 995-1260 lbs 48.00-55.75.

**FEEDER STEERS** Medium 1 pkg 523 lbs 82.75. Medium and Large 1-2 couple pkgs 450 lbs 71.00-78.00. pkg 620 lbs 62.25. pkg 750 lbs 65.60. 850 1090 lbs

63.25-64.75 Large 2 (Holsteins) pkg 580 lbs 66.85. pkg 680 lbs 64.00.

**FEEDER HEIFERS** Medium 1 pkg 560 lbs 69.75. Medium and Large 1-2 couple pkgs 430 lbs 71.00-78.50. pkg 585 lbs 65.00. pkg 660 lbs 58.75. pkg thin blacks 725 lbs 67.25.

**FEEDER BULLS** Medium 1 600-700 lbs 67.50-74.00.

**CALVES** Compared to last week, veal calves sold mostly 5.00 to 10.00 higher. Demand remains very good for Holstein bull calves suitable for special-fed veal barns. Prices were 5.00 higher than last week's active market. Holstein heifer prices were 10.00-25.00 lower in slower trading. Supply included 677 head in the State graded sale and 81 percent returned to feed.

**VEALERS** Good and Choice 70-110 lbs 20.00-30.00, few up to 32.00. Standard and low Good 60-90 lbs 10.00-22.00.

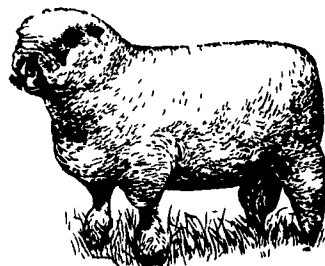
**RETURNED TO FARM** Holstein bulls 95-125 lbs 157.00-175.00. Plainer-type bulls 85-115 lbs 90.00-157.00, 80-85 lbs 40.00-60.00. Holstein heifers 80-115 lbs 291.00-349.00. Plainer heifers 70-105 lbs 225.00-298.00.

## New Holland Livestock

NEW HOLLAND, PA  
THU OCTOBER 21, 1999

THURSDAY	746	577	140
1433			
LAST WEEK	1317	725	396
LAST YEAR	1167	787	464

**CATTLE** Compared to Tuesday, slaughter steers and heifers sold steady to 50 lower. The market continues to be very strong for the diminishing supplies of high Choice and Prime steers, but the severe penalty for Selects has put pressure on the average quality cattle. An attractive offering of Holstein steers sold mostly steady. Slaughter cow and bull prices were steady.



head the State graded sale with around 89 percent returning to feed.

**VEALERS:** Good and Choice 70-110 lbs 22.00-32.00, few up to 39.00. Standard and low Good 60-90 lbs 11.00-22.00.

**SLAUGHTER CALVES:** Few Good and Choice 1200-1300 lbs 76.00-89.00. 350-550 lbs 55.00-65.00. Standard 300-600 lbs 40.00-60.00.

**RETURNED TO FARM:** Holstein bulls 95-125 lbs 150.00-168.00. Plainer-type bulls 90-125 lbs 100.00-147.00, 80-90 lbs 67.00-113.00, few weaker calves down to 29.00. Holstein heifers 80-120 lbs 300.00-340.00. Plainer heifers 75-100 lbs 185.00-300.00.

**SHEEP:** Compared to Monday, slaughter lambs 7.00-10.00 lower and slaughter ewes traded 2.00-8.00 lower.

**SLAUGHTER LAMBS:** Choice and Prime 2-3 40-60 lbs 90.00-120.00; 60-100 lbs 75.00-80.00; 80-120 lbs 65.00-75.00. Good and Choice 1-3 40-60 lbs 80.00-90.00.

**SLAUGHTER EWES:** Good and Choice yearlings and 2 year-olds 30.00-45.00. Utility and Good 1-3 20.00-40.00.

**GOATS:** (All goats sold by the head) Billies: Large 100.00-125.00. Medium 75.00-100.00. Mutton: Not well tested. Nannies: Medium and Large 35.00-60.00. Yearlings: Choice and Prime 60.00-85.00. Kids: Choice and Prime 40.00-60.00, few up to 70.00. Good 20.00-40.00.


## Lancaster Co. Weekly

NEW HOLLAND, PA  
FRI OCTOBER 22, 1999

CATTLE	CALVES
THIS WEEK	2511 1853
LAST WEEK	2309 1635
LAST YEAR	3058 1747

**CATTLE:** Compared to last week's closing prices, slaughter steers and heifers sold steady to 50 lower. Prices took a step back with most of the pressure coming from sharp discounts on select cattle. The spread between select and choice carcass cut-out values grew to as much as 17.00 this week, as the Midwest continues to market "green" cattle (those with only limited days on feed and that are less likely to grade Choice). But, as long as these cattle

(Turn to Page A37)



## Willier, Incorporated

Your Source for Quality Cattle

Licensed and Bonded Cattle Brokers

DAIRY HEIFERS	BEEF CATTLE	HERD DISPERSALS
---------------	-------------	-----------------

Inside Pennsylvania: 717-626-3113 FAX: 717-626-1260  
Toll-Free Outside of PA: 1-800-485-2233

### B&R CATTLE CO

RD 1, Manetta, PA 17547  
Office Phone: (717)653-8164

Specializing in Stockers & Feeders

JOHN BOWMAN  
ph. (717)653-5728

RON RANCK  
ph. (717)656-9849

### KIRKWOOD HAY AUCTION

Hay, Straw and Grain Auction EVERY TUESDAY 10:00

Located Rt. 472 5 miles south of Quarryville or 6 miles north of Oxford corner of Rt. 472 and Noble Road.

Lloyd H. Kreider, Auctioneer AU-000513L  
No out of state checks

### HAY, STRAW & CORN - SALE -

Sale Starts Every Friday At 10 AM

### GREEN DRAGON MARKET & AUCTION

955 N. State St. Ephrata, Pa. (717) 738-1117

1 mile North of Ephrata on N. State St.  
Out of State Buyers - Cash or Certified Checks Only

### QUALITY FEEDER CATTLE

Financing Available  
\* Fixed Interest Rates • Interest Due when Cattle Are Sold • No Monthly Payments

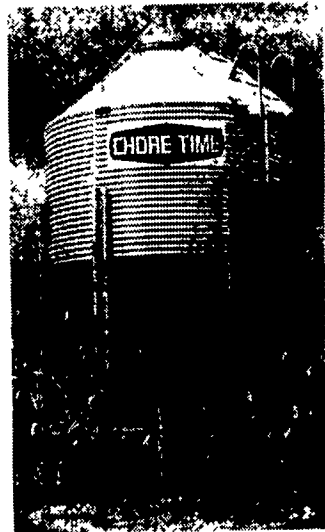
### SCARFF BROS. INC.

Cattle Dealers • Licensed & Bonded  
2300 Fallston Road • Fallston MD 21047

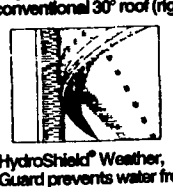
Lance N. Scarff Farm (410) 877-0370 Fax (410) 877-7802 (410) 459-4865	C. Howard Scarff, II Home (717) 445-4355 Fax (717) 445-7237 Mobile (410) 459-4864	W. Conly Scarff Home (410) 838-5883 Mobile (410) 790-2650
--	--	---

• Contract Feeding Programs • Marketing of Finished Cattle • Dairy Heifers

## Get more capacity and better service from Chore-Time's New Next Generation bin



High Capacity 40" roof (left) allows more storage and stays cleaner than conventional 30" roof (right)



HydroShield® Weather Guard prevents water from running down hopper

• ACCESS PLUS® permits easy clean out of the bin from the ground.

Call for pricing on bins assembled and delivered to your farm

Contracts available call for information

■ Layers ■ Broiler ■ Hogs  
Call for our free brochure "What is contract production?"

Replace your bulbs and save electricity with energy efficient Fluorescent Lights

5-7-9 Watts 13 Watts  
5.49 ea. | 5.79 ea.

Light Bulbs 36¢ Ea.  
25 to 100 Watts  
Brass Base - 5000 Hrs.

Authorized CHORE-TIME Master Distributor Since 1982

Northeast agri systems Flyway Business Park 139A West Airport Road Lutz, PA 17543 Ph. (717) 509-2702 1-800-673-2580	Delmarva Store 305 University Ave Federalburg MD 1-800-735-6361
--	--

• MARKET HOGS • BOARS • SOWS • CULL PIGS

GOOD'S LIVESTOCK, INC.

Monday 6:30-11:00 A.M.  
Wednesday 7:00-11:00 A.M.  
Friday 6:30-10:00 A.M.

Route 897 • 1 Mile North of Fivepointville, Denver, Pa  
(717) 445-5776 • Fax (717) 445-6963

