

**ENDLESS MOUNTAIN
REAL ESTATE COMPANY**

(570) 659-5684 end@epix.net
TIOGA & BRADFORD COUNTIES

TIOGA COUNTY: 44± acres, mostly pasture lands w/some tillable & wooded, 28x48 barn w/hay storage, perk complete, NG/electric available, excellent for raising beef, horses, etc \$67,000 (#853)

BRADFORD COUNTY: Nice 2 story farmhouse, approx 2552 sq ft of living, 3BR, 1-1/2 baths, NG/FHA heat, 2 enclosed porches, State Lands nearby, 1± acre shady lot, check it out! \$72,500 (#856)

TIOGA COUNTY: Excellent location for your new modular or custom-built home, 2.49± acres w/Hickory Nut trees, spring, protective covenants to secure your investment, & nice views, NG, electric, cable, & municipal water/sewer hook-ups available, check it out! \$27,900 (#858)

Check Us Out on the Web! www.nvo.com/end

NEW YORK FARMS

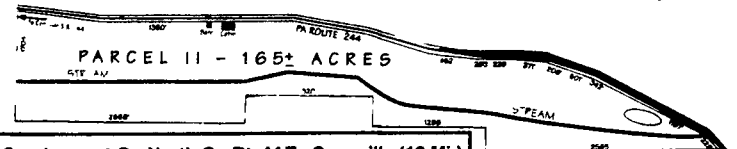
#1636 - NEW LISTING - 500 acre free stall operation Land is very productive, the best alfalfa ground 220 free stalls, manure storage, double 8 parlor, heifer barns, calf barns, dry cow barn, machinery storage building, round bale building, concrete bunker silos, 2 houses Located on very quiet road. This is a very good farm Owner retiring! Asking \$695,000.

We have some very good farms listed. Please call for appointment!

**POSSON REALTY
and Auction Service**

787 Bates Wilson Road, Norwich, NY 13815
(607) 334-9727
www.possonrealty.com

165 ACRES - POTTER CO., PA



In Coudersport Go North On Rt. 44 To Coneville (12 Mi.)
At Dingman's Store Turn Right (East) On Rt. 244 4 Mi.
Thru Oswayo To Property.

Cabin - Barn - Stream - Pond

Approx 1-1/2 miles of road frontage - 2/3 level farmland, excellent for recreational & residential development 12 miles North of Coudersport
\$875 per acre

Owner 610-458-5323

**BEAUTIFUL FINGER LAKES AREA
SOUTHERN TIER FARMS**

Endless Possibilities... 29,000 +/- sq ft barns-Auction, Horse Shows, Hobby/Craft Shows, plus 2 unit apartment buildings, 17+/- tillable acres - possible bldg lots! \$150,000 #3790

Borders State Land (9,085 Acres): 2 story home, 2+ bedrooms, garage, large 2 story barn, plus 37+/- acres, some woods & creek! \$54,900 #3621

General Farm... 280+/- acres, some woods, mostly tillable, 7-9 ponds, scattered apple trees, 1,000+/- ft road front, 48x70 metal cattle barn, 28x47 wooden barn, 2 story home, 4 bdrms, garage \$160,000. #3912

General/Cash Crop/Recreational Farm... 131+/- acres with 7,320+/- ft road front, Barn, Main House - 5 bdrms, 3 bay garage, 1 car garage, 28x52 Modular home, 3 bdrms, 2 baths, separate utilities - Great for Horses! \$295,000 #3918

Steuben County: 53+/- acres, partly wooded, streams, pond site 2 story home, 3 bdrms, 1.5 baths \$59,000 #3866

Dairy Farm... Main barn - 72x90, 72 cow ties, water cups, 625 gal bulk tank, 150 feed lot capacity, barn cleaner, Heifer Barn - 32x66 Machine shop - 36x48 pit silo, 238+/- acres, mostly tillable, creek, pond, 6,800+/- ft. road front, Main house- unfinished, 5 bdrm, 3 bath Ranch, 28x32 garage, plus Modular, 2 bdrm, 2 bath \$290,000 #3904

Near PA Border: 168+/- acres, old forest, springs, streams, large 2 story home, new septic system, 2 car garage on dead end road - town maintained! \$89,900. #3774

Dairy Farm... 20+/- acres, mostly pasture & tillable, 2 creeks, 100x100 main barn, 37 cow ties, 2 silos - one w/unloader, 500 gallon bulk tank, livestock & some machinery included, 1997 Ford 4x4 pickup truck - low miles, plus large 2 story, 4 bdrm, 2 bath \$165,000 #3886

General Farm: 187+/- acres, part woods, mostly tillable, creek, pond, 3,100 +/- ft road frontage from two roads, 50x70 Barn, Ranch home, 3+ bdrm, 24x24 garage, and mobile lot set up - CAN BE PURCHASED WITH LESS ACREAGE \$169,000 #3883

Acreage... 77+/- acres, part woods, 1500 ft on private/stocked trout creek \$40,000 #3878

Acreage: 170+/- acres, part woods, springs, pond site, 1900 ft. paved road front #3901

HOMES * FARMS * COMMERCIAL * ACREAGE/LOTS * RECREATIONAL PROPERTIES

MAKITRA REAL ESTATE, INC.

4 West Steuben Street, Bath, New York 14810
607-776-6665 after hrs 607-776-2468/2386

YORK COUNTY TURKEY FARM



This is a farmer's dream! It has everything you might want. Dwelling is fabulous w/approx. 3400 sq. ft. living space, 1-car attached garage, plus way-over-sized 3-car garage w/kitchen. Large pond, second dwelling, 3 turkey houses, large equipment barn. Perfect for young entrepreneur. Turnkey operation with very good returns.

**NORTHERN
FRANKLIN COUNTY**

278 Acre Dairy Farm (large portion Hagerstown soil), 68 "freestalls", currently used in operation; bank barn, 90'x125'; 3 silos, stream; beautiful 2400 sq. ft. brick farmhouse, 4 BRs, 1-1/2 bath; lots of road frontage. Wonderful place for large dairy.

**SOUTHERN
FRANKLIN COUNTY**

2 Farms N.E. of Mercersburg - 307 Ac. Total. 147 Ac. - "Was" dairy farm (nice big pond) 160 Ac. - Beef w/one mile of creek frontage. Buy one or both (adjacent to each other). Perfect for recreational use.



Over 20 Years Selling
Central PA Farms
Toll Free number
877-293-9109

MAHLON OBERHOLTZER AGENCY

Your Central PA Farm Broker
Smoketown, PA 17576 (Lanc. Co.)
717-392-1177

KENT COUNTY / MD

On MD 219 - approx. 1-2 miles SW of new overpass US 301, near historic Chestertown (5-6 miles), 3 hrs. to New York, 1-1/2 hrs. to Philadelphia, Baltimore, Washington/DC and MD/DE Beaches. W/w-out top tenant farmer and management supervisor.



WATERFRONT FARM, 3000 (+/-) ft. on Chester River, scenic & private, 322 ac. (+/-), excel. farming, hunting, no bldgs., 1100 ft. on MD 291, great investment, several lovely home-sites.

Price \$1,250,000



313 ACRES (+/-) FARM, very pretty & productive, 60 ac. mature woods, 4 ac. pond, small historic brick house (needs repair), perfect for nature lovers, hunting and family fun.

Price: \$895,000



Juergen C. von Sethe, Real Estate Broker

P.O. Box 717, Centreville/MD 21617
Tel: (410) 758-2111 - Fax: (410) 758-3332
Tel: (410) 757-1541 (Please Leave Message)



CAI AUCTIONEERS
REALTOR
APPRAISER



**AUCTION or BROKERAGE
CALL FOR THE ADVANTAGES OF EACH.
WITH 29 YEARS OF EXPERTISE AS A
CAI AUCTIONEER & REALTOR
I CAN HELP YOU MAKE THE PROPER DECISION.
A VISIT TO EXPLAIN WILL COST YOU NOTHING.**

PERRY CO. NEW LISTING - This week it's 2 executive home type tracts of land. These lots are in Saville Township. The one is 15 acres and the other is 13 acres and they are connected. These lots have deed restrictions and come with septic permits for on lot sewage. You can start building soon.

TIOGA CO. 212 ACRE DAIRY FARM SETTLED THIS WEEK

PERRY CO. 136 ACRE DAIRY FARM SETTLED THIS WEEK

Now take a look at this other **TIOGA CO.** level to gentle slope gram farm. It is and often has better crops than Lancaster Co. This farm would be good for another Lancaster County farmer as are many others in the Wellsboro area. I won't stop other interested buyers from buying this one, but you will not regret investing in this fine, good productive farm.

LEBANON CO. - AUCTION NOVEMBER 13, 1999 @ 12:00 NOON. Equipment and tools @ 9:00 AM. **Schaefferstown:** This 11 acre farmette is a property with Great Historical interest and value. There is a restored farmhouse, 3 stall horse barn, Blacksmith shop, small bank barn, in-ground pool, OLD LOG HOUSE in need of restoration (new roof in place), repairable dam breast for the pond, foundation for the original ice house and COBBLESTONE drive from Lancaster City Streets.

My listings turn to "SOLD."

"Don't Wait To Buy Real Estate - Buy Real Estate & Wait"

SANFORD G. LEAMAN REALTOR,

CAI AUCTIONEER, CFS, CMI, GRI

101 WHITE OAK DRIVE, LANCASTER, PA. 17601-4842

(717) 569-4264 or Toll Free 1-800-836-8113, FAX 717-569-8847

"See Me On The Web" http://www.lamnauct.com email: farmboy@lamnauct.com

REAL ESTATE AUCTION

BARBOURS, PA

Plunkett's Creek Twp. - Lycoming County
Scaife Road
Montoursville Area School District

- 3 Bedrooms • 1.5± Acres • Built in 1992
- 98-Foot Frontage on Loyalsock Creek
- 1 3/4 Baths • Many Extras



Auction to be held on site

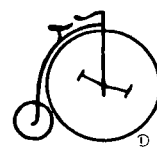
Saturday, October 30, 1999 at Noon

Note: Personal property will be sold immediately following

Terms: To be sold with executrix's immediate confirmation. Cashier's or certified check written to Roan Inc. for \$10,000 or cash required at time of auction as down payment. **6% Buyer's Premium** charged, to be paid by purchaser as part of the purchase price. Settlement made 30 days from sale date upon delivery of clear deed.

Directions: Take Route 87 north from Montoursville to Barboours. Cross Loyalsock Creek at the Barboours bridge. Turn right. Go four tenths mile. Cross the Plunkett's Creek bridge and immediately turn right on Scaife Road. Go three tenths mile. See home and signs on left.

Bob Chuck & Rich
ROAN INC.
Auctioneers & Appraisers
AU 000777 L
3530 Lycoming Creek Road
Cogan Station PA 17728
570-494-0170
Outside PA 800-955-ROAN



For an appointment to see this prime property and more information page Michael T. Roan at 570-370-3362 or Steven Letteer at 570-318-3870 or call Roan Inc. 570-494-0170