

REAL ESTATE AUCTION

FRI. EVENING, OCT. 29, 1999

5:00 PM

Off Rte. 154, 3 miles South of Shunk, (12 miles North of Forksville - 11 miles South of Canton), Sullivan Co., PA.

Parcel #1 - 3+/- acres with 1977 14x70 3 bdrm. mobile home w/1-3/4 baths, well maintained, open lot with sand mound septic and drilled well (less than 18 mos. old), 24x32 garage with kitchen area, full bath and separate room plus 10x20 and 22x20 utility sheds. Loads of potential here! Twp. road frontage.

Parcel #2 - 2.6 +/- acre lot with perk for sand mound (mostly open) - Twp. road frontage

Parcel #3 - 2.6 +/- acre lot with perk for sand mound (mostly open)

Note: All parcels will be offered individually, then as a whole and will be subject to owner's confirmation. Possible partial owner financing to qualified buyer - call ahead of time for financing details.

Terms: 10% at close of bidding - balance at closing within 30 days. Full terms read day of auction.

Watch for listing of guns (incl. 1894 Winchester), tools, household & 2 beef cows to be sold on the 29th.

OPEN HOUSE SHOWING

Sunday, Oct. 17 2PM - 4PM or other times by appointment with the auctioneer 570-835-4214

PROFESSIONAL AUCTION MANAGEMENT AND APPRAISALS BY

RANDY JELIFF AUCTION SERVICE

R.D. 1, Box 161-C • Tioga, Pa. 16946 • 570-835-4214
THE AREA'S FOREMOST REAL ESTATE AUCTIONEERS!

ON-SITE AUCTION

LOCATED AT: Estate of Gerald Wonsidler
1950 Geryville Pike, East Greenville, PA
Directions: From Pennsburg, PA - take Rt 663 East 1 1/4 miles to Geryville Pike, left on Geryville to Auction site
Terms: ABSOLUTE AUCTION 10% Buyers Premium, items to be paid in full day of auction in cash or acceptable check
Tractors & Farm Equipment: Ford 2600, gas, Ford 601 Workmaster, gas, John Deere 214 lawn tractor w/mower, John Deere 111 w/mower & sickle bar, Snapper riding mower w/grass catcher, 2 wheel dump trailer, Ford 101 3 pt 1 bottom plow, Ford 706 3 pt back bucket, John Deere 31 T lawn sweeper, Woods mod M5 rotary mower, Troybilt rototiller, John Deere 826 snowblower, John Deere 3E backpack blower, Stihl & Homelite chain saws, Speedaire air compressor, farm trailer, R T wheelbarrows, aluminum extension ladder, 2 green machine trimmers Cars: 1972 Volkswagen Beetle, 33,000 miles, auto stick shift, running 1976 Olds Delta 88, 72,000 miles
Machine Shop Equipment & Tools: Atlas metal lathe, Champion drill press, Atlas Clousing threading machine, 7 Brown & Sharpe auto-screw machines, 4 Bechler screw machines, Black Diamond drill grinder, Stanley bench grinder, Bechler honing machine, Delta Milwaukee toolmaker grinder, A T & M centrifugals tumbler, Detecto balance scale, Model Machine Co precision drill, Gray Mills pumping system, slit cutter, Delta threading machine, shop vac, floor jack, brass stock, Starrett micrometers, hand tools, machinists tools, Henderson Bros tumbler, Ernst Leitz Wetzlar micro inspections unit Antiques/Collectibles Set of 6 oak pressed back chairs, oak square & round ext tables, slate top billiards table, oak bureau, organ stool, wicker chairs, photo albums, tin type photos, jelly cupboard, oak washstand, decorated slide top box, Violin, sleighbells, Dietz driving lamps, Orion skater lamp, oak splint basket, Kling maple BR suite, maple LR suite, mail pouch thermometer, Abbots, Knebels, & Longacre milk bottles, Thatcher dairy porcelain top milk bottles, Costume Jewelry, Big Little Books, movie films including Hopalong, W C Fields, Mickey Mouse stopwatch, Mickey wrist watch, political buttons, saddles, spurs, ammunition, 1922 Remington calendar, Zinnfiguren "flats" toy soldiers Rusty & Rin Tin Tin pocket knife, sleigh China and Glass: Carnival glass, pink depression green & gold wine set, blue glass plates, vase, miniature glass oil lamp, glass basket, cranberry & white barber bottles R S Prussia hat pin holder, tea set, bone china cups & saucers, snuff bottle, Masons pitcher.

Tuesday
October 19
10:00 AM

ALDERFER AUCTION CO

501 Fairgrounds Road, Hatfield, PA 19440 • 215-393 3000

Public Auction Register

Closing Date Monday 5:00 P.M.

of each week's publication

Internet Sale Register will be updated every Sat. at 2:23 P.M.

ATTENTION Auctioneers

All sales register info needs complete address, street, town, county & state.

WED, OCT 27 - 10AM Dairy Show & Sale New Holland Sales Stables, Inc., 109 N Fulton St, New Holland, Pa

WED OCT 27 Farm Equip, Wolgemuth Auct., 109 N Maple Ave, Leola, PA

WED OCT 27 - 9AM Doll collection, doll furniture, doll clothing & supplies 38 Cherry Hill Rd, Paradise, Lanc Co., Pa By Joe & Evelyn Russell Howard E Shaub, auct

WED OCT. 27 - 9 30AM Farm equip & related items, for Aaron & Verna Lembach, 10 Brown Rd, Shippensburg, Pa Cumberland Co Rick Foreman & Andy Martin, aucts

WED OCT 27 - 2PM Antiques household goods, collectibles & tools Held at the Horst Auction

Center, at the corner of Rt. 322 & Durlach Rd., approx 2 1/2 miles W of Ephrata Lanc Co., Pa Horst Aucts

WED OCT 27 - 5PM 14 acre farm, new lawn mower parts, poultry equip Rt 2 Box 1695 Freeport Rd, Lebanon, Bethel Twp Leb Co., Pa Dale & Rose Gingrich Harry H Bachman, auct

WED OCT 27 - 5 30PM Real Estate Sinking Valley Area off Rt. 453 turn at auction sign, go 3 miles Follow auction signs By Mr & Mrs Barry Vance Ron J & Ron S Gilligan, aucts

THURS OCT 28 - 8AM Real estate, antique furniture, household goods, crocks, iron articles, samplers, glassware & china. T H Lmoges serv 12 dinner set. #1250 Cub Cadet riding tractor

1905 Nickle Mine Rd, Nickle Mine, Bart Twp., Lanc Co., Pa Ella M Woerth Estate Howard E Shaub, Inc., auct

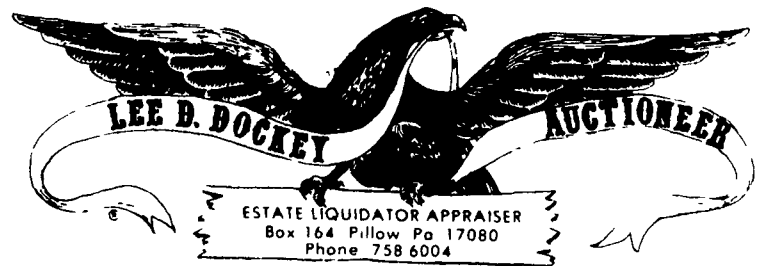
THURS OCT 28 - Farm #1 9 30AM Rt 305 from Belleville turn left onto W Back Mt Rd., 2 miles to farm on left Farm #2 12 30 PM 4 Miles West of Belleville on Rt 655, turn left onto Bunker Hill Rd., first farm left Sunnyside-Vu Farm Dispersal The Cattle Exchange

THURS OCT 28 - 9 30AM Umbletown Rd, Gap, Lanc Co., Pa Horse drawn farm mach, 5 draft horses, 7000 JD corn planter, 600 Gayd harvester w/table By John David & Fanny Stoltzfus Auct Steve Petersheim

THURS OCT 28 - 10AM Real estate at 11 00 73 Acre dairy farm, equip, hay & silage located 12 mi S of Quarryville on Cherry Hill Rd Fulton Twp Lancaster, Pa Real Estate by Jonas F Stoltzfus Personal Ammon B Stoltzfus, Auctioneers, Robert E, Jeffrey R, Michael L Martin & Randall Rank

THURS OCT 28 - 10AM Farmall tractors, farm equip & related items At 99 Zook Lane, Newburg, Pa For Jerry & Dora Zook Andrew Martin, auct

THURS OCT 28 - 12 Noon Sealed Bid Sale Mongomerville, Pa 1010 Bethlemlen Pike Rt 309S in Montgomerville Pa Northeast Utilities, Con Ed, GPU PP&L, PECO Energy and others offering surplus items



Public Auction

Sat., Oct. 23, 1999 8:00 A.M.

Location: App. 40 miles North of Harrisburg, PA, in Elizabethville, PA. at 55 North Moore Street. Watch for auction signs along Route 209.

REAL ESTATE

1 1/2 STORY FRAME HOME known as 55 North Moore Street, Borough of Elizabethville, Dauphin County ~ consists of KITCHEN (W/GAS STOVE), COMBINATION DINING-LIVING ROOM, 3 BEDROOMS W/CLOSETS & BATHROOM ~ FINISHED BASEMENT W/WORK AREA, HALF-BATH & COMBINATION REC. ROOM-LAUNDRY ROOM ~NEW YORKER OIL HOT WATER FURNACE ~ LOT SIZE 153' (+/-) along Moore Street & 100' (+/-) along North Street ~ For additional information or inspection phone 570-758-6004. TERMS: 10% Down Further terms & conditions to be given when real estate is offered at 11:00 A.M.

ANTIQUES & COLLECTIBLES

Walnut Victorian Brown Marble-Top Stand, Washstand & Bureau; Flour Chest; Washstand w/Towel Bars; Square Oak Table w/Rope Legs, 4-Leg Dropleaf Table w/Drawer; Cottage Bureau, Flat-Top Trunk; Cupboard Base, 4-Pc Dep Era Bedroom Set; Ornate Dep. Era Smoking Stand, Mortised Bench; Oak Wall Telephone; Gold Leaf Wall Mirror, Early Portrait Watercolor; Victorian Clock shelf; Elizabethville Memorabilia (Photos of 1936-38 Baseball & Basketball Teams, Bi-Centennial Items, Child's Baseball Uniforms, 1930 James Hoffner Calendar, Etc.); School Desk, 2 Metal Hubley Toys - Diesel Roller & Bell Telephone Truck; Buddy-L Sand & Stone Yellow Truck; Metal Road Grader, Texaco Ertl Collector Series #5 Ford Runabout; Fisher Price Timmy Turtle Pull-Toy; Lionel 0-27 Diesel Switcher w/Cars; Lionel #2055 Engine w/Cars; T.W. Lionel Transformer; Plasticville Buildings; Marx Beacon Light; Dolls (Elite, Etc.), Children's Books; Child's Davy Crockett Outfit; Zorro Neckerchief, Mighty Mouse T-Shirts; Darsy Model 1894 BB Gun, Child's Quilt, 7 Quilts, Crazy-Patch Comforter, Braided Rugs; Zenith Table-Top Radio, Tramp Art Chest, Brass Bucket, Lee Zeigler 1930 Cookie Cutters; Kerosene Lamp; 2-Gal Cowden Jug, Sm Keen Kutter Wooden Box; Asst. of Adv. Tins, Necco Candy Jar, Roseville #78-9 Vase, Cast Iron Cat Bank; Dracula Pez Dispenser, Coll. of Political Pins; Coll. of Insulators; Pocketknives (Hopalong Cassidy, Cub Scout, Girl Scout); Noddors (L.A. Rams & L.A. Dodgers), Misc Costume Jewelry; Men's 10K Gold Ring w/.33 Diamond; Waltham Men's Pocket Watch; Closed-Face 17J Lapel Watch; 14K Gold Pres. Carter Inaugural Medal by Danbury Mint; APP. 104PCS OF FIESTA WARE, APP. 110 PCS OF NORITAKE AZALEA PATTERN CHINA (COVERED TUREEN W/FINIAL, TEA POT W/FINIAL, TILE, ROUND & OBLONG SERVING BOWLS, BULBOUS S/P SHAKERS, ETC); Asst of Pressed Glass, Etc

HOUSEHOLD & MISC. ITEMS

Whirlpool 19 cu. ft. Ref/Freezer; Sharp ESP Sensor Microwave, Whirlpool Hvy-Duty Extra Large Capacity Plus Auto. Washer (App 1 Yr Old), G.E. Hvy-Duty Dryer; RCA Floor-Model ColorTrack TV, Mont Waid Portable Color TV; Rabbit Cable Multiplier, York AM-FM Stereo Double Cassette Recorder/Player w/Speakers, Westinghouse Dehumidifier, G E Air Conditioner (App. 1 Yr Old); 4 Reproduction oak Chairs, Lane Rocker-Recliner; Sofa; Uphol. Chairs; Corner Desk & Chair, Samsonite Card Table & Chairs; 2 Double Beds w/Sp& Matt; 2 Dressers; Cheval Mirror, Cedar Chest; Dbl-Door Metal Wardrobe; Table & Floor Lamps, Small Appliances, Dishes, Pots & Pans; Wooden & Iron Porch Bench; Master Mechanic Wet/Dry Vac.; Black & Decker Finishing Sander; Asst of Hand Tools, 22' Aluminum Ext. Ladder; Wheelbarrow; 2 Lawn Boy Rotary Mowers; Misc Garden Tools; Etc.

TERMS: Cash Personal checks accepted w/established account or prior approval.

Allen Shaffer, Attorney

Sara E. Hoffner, Owner

Linda R. Demis & Sara E. George, P.O.A.

Lee D. Dockey Auction Service

#AU 229L (570-758-6004) &

Dockey-Romberger #AU1683L

& Deppen #AU1957L



FIREARMS AUCTION

Tuesday, Oct. 19, 1999 at 5:30 PM

1550 Sandhill Road, Hershey, PA

OVER 100 FIREARMS LONG RUNS & HANDGUNS

GUNS ARE FROM LOCAL ESTATES & CONSIGNORS

THIS IS ONLY A PARTIAL LISTING

HANDGUNS: Luger mod. #1918, 38 cal. w/Holster; U.S. Revolver Co., .32 Smith & Wesson; Iver Johnson mod. 1900 I.J. Target 7-Shot Revolver; Hopkins & Allen Safety Police 38-Short 5-Shot Pistol; Winchester mod. 363 Precision Air Pistol; Winchester 32 Special mod. 94; Crossman Pellet Gun N-A pt. 177; Hawes "Western Marshall".357 mag.; Raven mod. MP-25 .25 Chrome & Pearl; Raven mod. MP-25 .25 cal. Semi/Walnut; Taurus .357 mag. Pacmayer Grip; Smith & Wesson .357 mag. Stainless mod. 66-2; Ruger - Mag "New Model Super Blackhawk 10-1/2 in. Barrel 44 mag; Ruger .357 mag. "Security 8"; Ruger P85MK2 9mmx19 cal. w/Extra Clip; Helwan 9m "Egyptian Military Issue"; Luger mod. TEC-DC9 9mm w/Case & Clip; Sharps and Harkin 4 Barrel w/Rotating Pin, 32 cal.; plus others.

LONG GUNS: Winchester 30/30 cal. mod. 66 Gold Plate; Remington mod. 1100 12 ga. Modified Full Trap; Springfield .303 cal. w/Bayonet 1943 M.A. Lithgow; Winchester mod. 94 30/30 cal. Saddle Ring; Mossberg 500A 12 ga. Full Modified Trap; Remington 870 Wingmaster 12 ga. 2-3/4; Hamilton Rifle mod. #27, 22 cal. 1907 pat'd.; Springfield Army mod. 1899 30-06; Weatherby Mark V 257 W.M. cal. with Weatherby Scope; Harrington & Richardson Arm mod. Bay State 20 ga. Single Full Choke; Savage mod. 99 .300 sav Lever; Savage mod. 110 .300 cal. Bolt; Winchester mod. 1200 12 ga. mod CH Pump; J. Stevens Arms 12 ga. Single Barrel; Remington mod. 512 22 cal. Bolt Sportmaster; Keystone Arms Co. 12 ga. Single Barrel; Savage mod. 340c 30-30 Bolt w/Clip; Weihrauch Mellrichstadt Bay HW50S Kai 4.5 w/Beeman Blue Ribbon Scope mod. 50R 4x32; J. Stevens mod. 416 22 LR 12 Power Redfield Target Scope; Deutsche Werke 5.4mm mod. 1 22 cal; U.S. Springfield mod. 1880 Stamped 1873 w/Bayonet; O.F. Mossberg & Son 16 ga. mod. 190 Bolt w/Clip Polly Choke; Chinese Military Issue SK 7.62 x39 cal. 4x20 Scope; Winchester Ranger 30/30 cal.; Mossberg 12 ga. (riot gun) Maverick 18-1/2; Ruger "New" Model 22 cal. convertible cyl. Stainless; Cobray M-11 mod. 9mm 20 Round; Daisy mod. .38; Ithaca 12 ga. Double Barrel; Stevens Little Scout 22 cal.; Savage mod. 24-S-A Over/Under 22 cal./20 ga.; Savage Lever .303 cal.; Marlin mod. 783 bolt 22 cal.; Remington Wingmaster mod. 870 pump 20 ga.; Springfield Krag bolt 30-40 cal.; Martin Glennfield 60 Semi Auto 22 cal.; Savage 24D-P o/u 22 cal/410 ga.; (2) Winchester mod. 70 Bolt 30-06 and a 7mm; Winchester mod. 1873 Lever 35 cal.; Savage mod. 219 -30-30 cal.; American Arms Turkey Special 12 ga. 31/2 O/U; Browning Superposed Lighting 20 ga. O/U; Browning Invictor Special bps 12 ga.; J. Stevens Marksman 22 cal.; Lefever Dble. 410 ga.; Remington mod. 7600 Carbine Pumo 30-06; Smith & Wesson Mod. 1500 300 Win. Mag.; Springfield U.S. mod. 1884 45/70 cal.; Winchester mod. 67 Bolt; Winchester - mod. 63 Semi-auto 22 cal., mod. 88 243 cal., mod. 88 243 cal., mod. 94 Lever 30-30, mod. 12 Featherweight 12 ga., mod. 1500 XTR Semi-auto 20 ga., mod. Super X1 12 ga.; Winchester mod. 1912 16 ga. Pump; plus ammunition & other hunting related items.

◆◆◆ PREVIEW: Auction Day from 2 PM to 5:30 PM ◆◆◆

NOTE: All bidders must produce valid government issued photo ID for bidder registration, firearms purchase & firearms registration. No exceptions.

TERMS & CONDITIONS: 10% Buyers Premium. Cash, PA State Check, Visa/MasterCard. PA State sales tax applied to all purchases.

DIRECTIONS: Hershey, off Rt. 322 near Hershey Medical Center, turn South onto Bullfrog Valley Rd. Approximately 2.5 miles to Ziegler Auction Company, Ltd.

For photos & more information about this and other upcoming auctions visit

www.zieglerauctionco.com

ZIEGLER AUCTION COMPANY, LTD. PA Lic. #2120-L

"AUCTION - THE ULTIMATE MARKETPLACE"

Phone: 717-533-4267 / Fax: 717-533-2114