

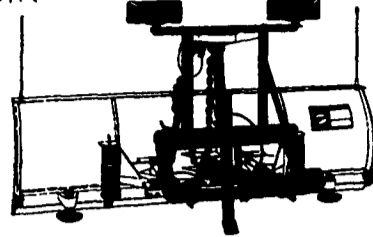
**'90 ZIM MIXER**

1976 International Paystar/290 Cummins Diesel and  
1990 Concrete Mixer.....\$29,000

Call Jim 717-786-2171

**ORDER TODAY, DON'T WAIT!**  
With All The Rain, Don't Wait Till It Turns  
To White Stuff! Be Prepared!  
See Binkley & Hurst Bros. Inc. - Your  
Source For Quality Snow Plows From Home  
Owner To Heavy Duty Truck Mount Plows

**DRIVE RIGHT IN!**



**NOT ALL DETACHABLE PLOWS  
ARE CREATED EQUAL!**

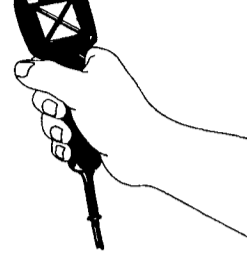
- Drive-in attachments eliminate struggling with a heavy blade and attachments
- Vertical Jack Stand guarantees proper height alignment
- Two permanently mounted connecting pins means there's no chance of dropping them in the snow or losing them during storage
- One Piece detachable (not two) means faster on and off

**The Key To Easy Operation  
Is In Your Hand.**

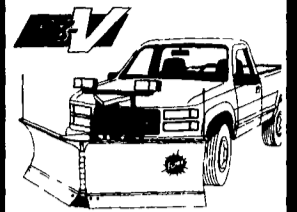
See Binkley & Hurst Bros. Today! Ask For Dean

**FISH STIK**

**SNOWPLOW  
CONTROL**



This new state of the art, electronic control can be used with either the Solenoid EHP or the EC/SV Hydraulic System  
• "CB" style mounting clip provided  
• Unplus for glovebox storage  
• Automatic shut-off if not in use and automatic float in "down" position.



**THREE  
PLOWS IN ONE!**

Break through deep drifts in the "V" position or carry and stack in the "scoop" mode or use this 8-1/2' plow in the straight or angled position for conventional plowing

All blade functions are right in the palm of your hand with the hand-held FISH-STIK® control. The minute Mount System® for easy on/off, trip-edge blade and double acting cylinders, all make the EZ-V plow the ultimate plow for the professional plower.

**BINKLEY-HURST  
BROS. INC.**

133 Rothsville Station Rd.  
P.O. Box 0395  
Lititz, PA 17543-0395  
(717) 626-4705 1-800-414-4705  
www.binkleyhurst.com



**LEFEVER BROS.  
CHEVROLET  
CHEVY TRUCKS**

**YOUR DIRECT LINE TO GENUINE GM PARTS**

**(800) 533-3837**

When you call the number listed above, you'll reach our wholesale parts specialists, who can help you keep your GM repair work moving quickly

Ask about

- Specializing in GM Medium Duty Trucks, Current and Obsolete.
- \$500,000 Parts Inventory.
- Parts Locator for Those Hard to Find Items.
- We Ship Anywhere, Local Delivery Available.
- Experienced, Knowledgeable Personnel.

Mon, Tues, Thurs, Fri  
7:30 a.m. - 4:30 p.m.  
Wed, 7:30 a.m. - 8:30 p.m.

**(717) 432-9697**

Quality Dealer Since 1921

406 U.S. Rt. 15 Dillsburg, PA 17019

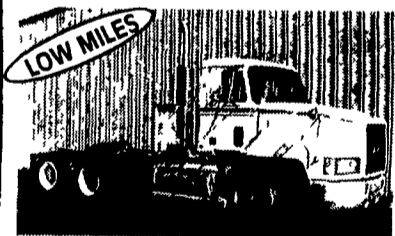
Major Credit Cards Accepted



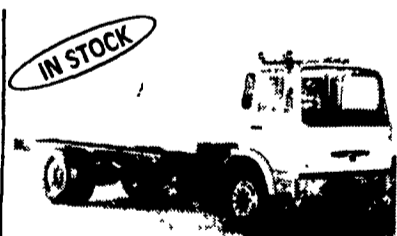
**We want your business.**



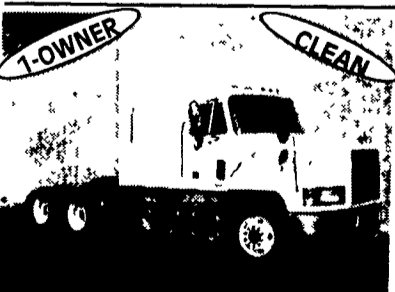
**ALL STAR  
Used Trucks**



**1995 MACK CH613**  
EM7-300, T2060-6 Spd., 38,000 lb -  
Camelback, 187 inch WB,  
288,505 miles



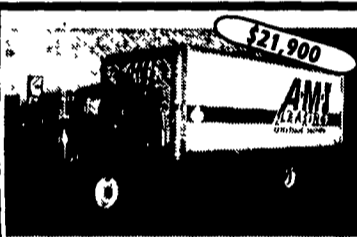
**(1) 2000 MACK MS250P**  
Chassis, E3-190, 4106A-6 Spd.,  
12 Front, 21 Rear Axle,  
217 W.B.



**Includes 200,000 Mile  
Engine Warranty,**  
All Trucks Have Been Run on Dyno  
20 -1995 E7-350 RTLO14610B  
10 Spds., DS404 - 3.9OR on Air,  
Steel Disc Hub Pilot, 295/75R 22.5  
192 WB, 42" Highrise, 440,000 Miles



**1988 MACK R-MODEL**  
E6-350, T-2090, 9- Spd.,  
Camelback Suspension,  
4:42 Ratio, 11R22.5 Tires,  
Steel Disc Wheels



**1994 FORD LN8000**, 8 3 210 HP, 6-Spd.,  
33,000 GVW, 246" WB, 180 C.A., 24'  
Morgan FRP Sidedoor & Liftgate 165,094  
Miles, Red



**1995 MITSUBISHI FH100**, 6 Cyl Turbo,  
Allison AT, 17,200 GVW, 100,000 Miles,  
16 Ft Van w/Ramp



**1993 FORD LTA 9000**, 3406C 350 HP  
52,000 GVW, Air Ride, 255,355 Miles, Air  
Slide 5th Wheel, Red.



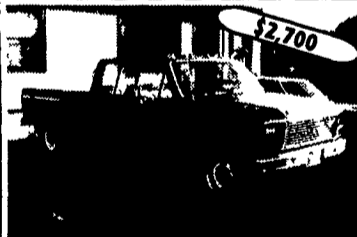
**1998 FORD F800, HOT SHOT** 5 9 190  
HP, 6 Speed, 26,000 GVW, 40,000 Miles,  
237" WB, A/C, 36" Bunk



**1996 FORD F800**, 8 3 250 HP, 7 Speed  
O.D., 31,000 GVW, Spring Air Suspension,  
63,082 Miles, 154" WB, Green, EXH,  
Brakes, Loaded



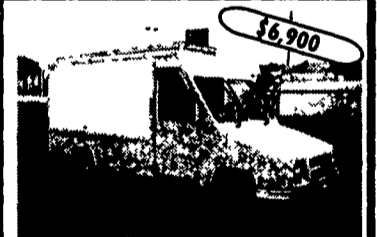
**1992 FREIGHTLINER FLD120**, Det 12 7  
355-400 HP, 9 Speed, 52,000 GVW, Air  
Ride Susp., 786,523 Miles, 228" WB,  
3-Stage Jake, 60" Flat Top



**1986 FORD F350 CREW CAB**, 460 V8,  
4-Speed 8' Bed, A/C Brown



**1987 FORD LTS 9000**, Cummins 855 350  
HP, 8LL Trans, 73,280 GCWR, Hendrickson  
Suspension, 371,400 Miles, 167" WB, Air  
Slide 5th Wheel



**1993 DODGE AEROMATE**, Dodge 3 3  
Engine, Auto Trans, 5,500# GVW,  
210,000 Miles, 127" WB, Alum 9' Bread  
Truck



**1991 FORD LA9000**, L10 260 HP,  
9 Speed Trans, 34,700 GVW, 416,887  
Miles, C A -84 A/C, Custom Interior



**1993 FORD F450**, 7 3 Turbo, Auto Trans,  
15,000 GVW, 24,479 Miles, Red, 8 Dump,  
Central Hyd., Salt Spreader, 9' Western  
Plow



**(14) 1994 FREIGHTLINER FL106**, Det 50  
8 5 315 HP, 10 Speed, 4 10 Ratio, 209K -  
480K Miles, 138" WB, 72" C.A., No A/C,  
Green



**KEYSTONE  
TRUCK SALES**

470 Penhar Rd., I-83 at 322 East,  
P.O. Box 4194, Harrisburg, PA 17111  
Sales Dept. Hours:  
Monday-Friday 8 am to 5:30 pm



(717) 564-6661 or (800) 669-6235

**LESHER Mack**



**SALES &  
SERVICE**

2700 Cumberland Sts. Lebanon, Pa. 17042  
(Route 422 West)

**717-273-4535**