

1999 TIMPTE SUPER HOPPER 42' GRAIN TRAILER

Air Ride, Brand New 11R24.5 Tires, Shurlock Tarp, LED Lighting, Stainless Steel Rear (Aluminum Wheels Available)

717-354-3199 New Holland, PA



1973 FORD L800

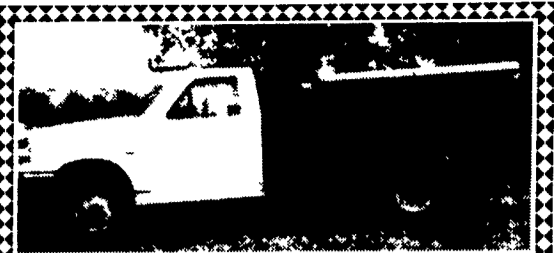
Brand New 391ci V8 Engine, 5-Speed Trans. with 2 Speed Axle, 187" Wheelbase White/Red, New PA Inspection. Perfect condition, MUST SEE!

Metzler Auto Sales - Martinsburg, PA (814) 793-3725

48' drop deck trailer, air ride. 45' curtain side trailer, air ride. Cash/trade. 215-721-1123 anytime

1995 Mack RD model, 400hp, 8 speed trans, 18' Parker aluminum body w/heat, air gate, 66" sides, aero tarp, 1122.5 tires on alum buds, 18,000 FA, 44,000 RA, \$73,500 obo. 610-987-6102 between 5pm-8pm ask for Junior

'94 Ford XL F150 super cab, 300 EFI, 5 spd, PS, PB, air, AM-FM, dual tanks, dark green w/ matching cap, 81,000 one owner miles, excellent condition, \$7,950. 717-733-2873



1990 Ford F350 Dully 4x4

7.3 Diesel, Turbo w/Utility Body & Air Comp., Nice

\$9,800

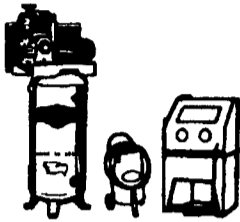
717-733-7408 or 717-733-3720



SAND BLASTERS & BLAST CABINETS



4294 E. HARRISBURG PIKE DEPARTMENT LF CATALOG MIDDLETOWN, PA 17057 (717) 944-0318 Route 230 Between Elizabethtown & Middletown



SAVE \$\$\$

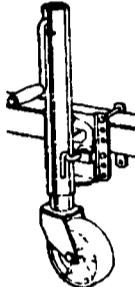
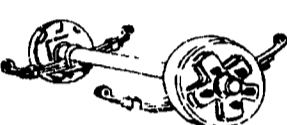
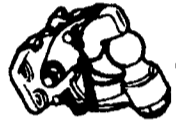
TOOLS AND EQUIPMENT

FREE CATALOG CALL OR WRITE NOW!!

AUTOBODY PARTS, PAINTS & SUPPLIES

BUILD OR REPAIR YOUR TRAILER. WE HAVE PARTS.

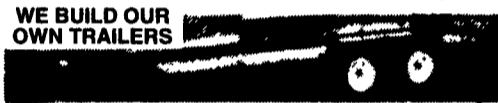
MOST CLASS III HITCHES \$79⁹⁹ to \$89⁹⁹



USED 4x4's Pickup's, Bronco's & Blazer - Call For Our Low Prices



NEW UTILITY TRAILERS
3,000 GVW, Extra Heavy Frames w/Treated Lumber Deck, Lights, Chains, Etc Included!!!
5'x10' Deck.....\$750
6'4"x12' Deck.....\$875
Add-On Landscape Ramp/Gate.....\$145



"NEW" 16' Deck Car Hauler
Has Two 24" Wide Diamond Steel Runners, Tube Steel Frame, 4-Wheel Brakes, Safety Breakaway Kit & Full Lighting Beaver Tail & Ramps, Removable Left Fender & More For \$1,799

Hours: Tues.-Fri. 9 AM - 6 PM Saturday 9 AM - 2 PM Closed: Sunday & Monday



Distributor For PUTNAM Hitch Products KINEDYNE Cargo Control REDLINE Trailer Parts



Class 2, 3, 4 & 5 Hitches From \$81.43 to \$118.94



2" x 27' Ratchet Strap

- 10,000 lb. Breaking Strength
- 3,335 lb. Working Range

\$18.50 ea. or box of 10 - \$170



DAVID A. FISHER TRAILERS

5509 Lincoln Highway, Gap, PA 17527

717-442-5098

Dealerships Available

AL HAMILTON MANAGEMENT COMPANY

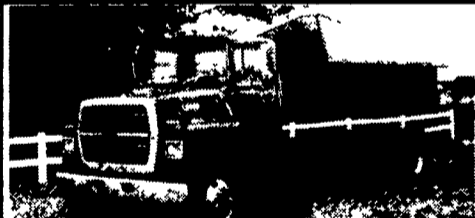
P.O. Box 157 • 55 Doe Run Road • Manheim, PA 17545

Phone: 717-665-7145 • Fax 717-665-2137

★ ★ ★
"CLEANEST TRUCKS AROUND"
★ ★ ★



1987 FORD LTS9000 TRI AXLE
17-1/2 Heway Alum. Body, Heated Body, Air Tail Gate & Tarp, 444 Cummins, 8LL Trans., 73,280 GVW, Custom Int., All ALum Buds, Very Nice Truck
\$41,500



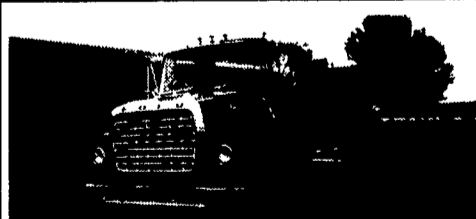
1992 Ford LN8000
C&C 7.8 L Diesel, 210 HP, 6 Spd. Trans., Custom Int., 234" WB, 168" CA, 33,000 GVW
\$19,500



17' Theil Dump Body
w/Hoist & Tank, Air Tail Gate
\$3,000



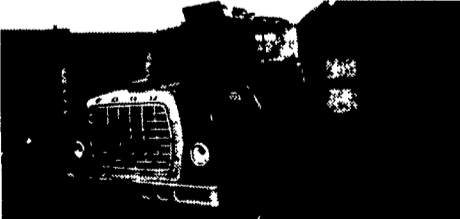
1991 Ford LN9000
w/New 10' Dump, L-10 Cummins, 9 Spd Trans., 34,700 GVW
\$25,500



1980 Ford LN8000 C&C
3208 Cat, 210 HP, 5 Spd. Trans, 2 Spd Rear, PS, Air Brakes, WB 204", CA 138"
\$11,500



1988 Ford LN9000 T.T.
NTC 315 Cummins, 7 Spd. Trans., 162 W.B., PS, A/C - **\$13,500**



1983 Ford LN7000 C&C
3208 Cat, 210 HP, 5 Spd. Trans, 2 Sp Rear, Hyd. Brakes, WB 220", CA 156", 24,000 GVW
\$10,500



1986 Ford LN8000 C&C
3208 Cat, 210 HP, 5 Spd. Trans, 2 Sp Rear, Custom Cab, WB 240", CA 170"
\$14,500



1975 Ford LT8000
15' Dump, 3208T, 250Hp, 8LL Trans, 52,000 GVW, Pintle Hook, Air Hook Up, Nice Older Truck
\$12,500



2 - 1993 INT. 4900 C&C
DT-466, 6-Spd. Trans., 32,700 GVW, Custom Int., A/C, 186 C/A, 254 W.B., Exc. Cond.
\$22,500 Your Choice



1991 Ford LNT 8000 C&C
7.8L Diesel, 240 HP, 10 Spd. Trans, Custom Int., A/C, WB 264", CA 192", 56,000 GVW
\$26,500



10' Gallon Dump Body
w/Sub Frame & PUmp
\$3,000