

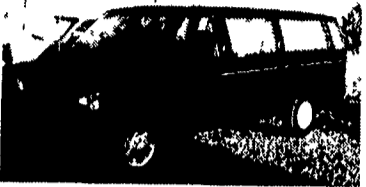
FOR SALE



97 DODGE RAM 2500 CLUB CAB
4x4, SLT, 360 Magnum V8, AT, A/C,
Most Options, Short Bed Red,
94,700 Miles
***16,800**



90 DODGE RAM 250 4X4
Cummins Turbo Diesel, AT, A/C, Most
Options, Long Bed, 150,000 Miles,
Black & Red
***9,850**



97 FORD MAXI-VAN
5 4 V8, AT, A/C, Most Options,
Black, 16,250 Miles
***19,500**



93 CHEV. SUBURBAN 4X4
350 V8, AT, Dual A/C, Most Options,
Hitch, Barn Doors, 105,700 Miles, Black
***13,500**

SCHAEFFERSTOWN AUTO & TRUCK SALES
Rt. 501, 1 1/2 miles South of Schaefferstown
717-949-2812

LEED TRUCK CENTER

402 South Chiques Rd
Salunga Exit, Route 283

717-898-1200



86 TOYOTA DUAL WHEELS

10' Steel King Platform Body with Tool
Boxes 4 Cyl 4 Spd P/S 115 118
Miles Class 3 Hitch Insp Clean
Only \$2,295



1988 CHEVROLET SILVERADO

30 1 Ton 4 Spd PS PW PL Dual
Wheel 454 V8 10 Eby Alum Platform
w/Gooseneck Hook Up & Class 3 Hitch
Call For Details



89 FORD F800

7 8 Liter, 210 HP, 5&2 Spd P/S
A/B 33 000 GVW, 116" CA, Insp
Very Clean
Call For Details



(2) 88 GRUMMAN Alum 14

Step Vans, 350 GM V8, 4 Spd, P/S P/B,
10 000 GVW, Dual Wheel, New Insp,
Very Clean **Call For Details**

AM GENERAL 6x6



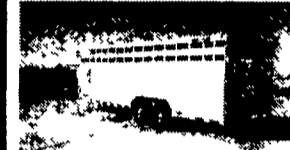
In-Line 6-Cylinder Cummins, with Turbo 5
Speed with Hi/Low Transfer case 900/20
Tires, Air Brakes, Locking differentials Cargo
body A must for every farmer or off road
work Some with new engines and
transmissions.

Priced from \$2,500 to \$12,500
All Road Ready EXCELLENT CONDITION
Call St. Marys, PA - (814) 834-1018

ALUM-LINE, INC.

The Leader in Heavy Duty Construction

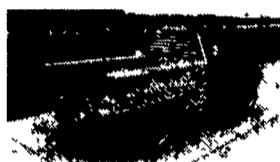
"More Trailer - Less Money"



All-Aluminum Livestock
Trailers, Bumpers &
Goosenecks • 8' to 39'
Lengths • Double Deck
Package Available

"The Finest Truck Bed You'll Own"

All-Aluminum Stake
Body Beds • 6' To 24'
Lengths • Many
Standard & Optional
Features • All Types of
Tool Boxes



Also from Alum - Line, a complete line of
aluminum pickup boxes and truck tool
boxes

Wolfe Auction
9801 Hansonville Rd.
Frederick, MD 21702
800-443-9580

John E. Kreider

Specializing in Rebuildables

5348 Beagle Rd., Elizabethtown, PA 17022
717-361-9296

1994 Ford Taurus GL
3.0L V6, AT, AC, Cruise,
Tilt, PW, PL, PM, Pwr.
Seat, Cass, 87,000 mi
A really nice car, runs
good, ask about
available warranties
\$3,995



1991 VW Passat
4 cyl, 5spd., PS, PB, AC,
Cass, 81,641 mi Black
with gray interior. Runs
excellent, Nice car.
\$4,495 OBO



1995 Ford Windstar GL
3.8L V6, AT, PW, PL,
PM, Tilt, Cruise, Cass.
Dual AC & Heat, 72,735
Mi. Hit Across Front,
Parts Available
\$2,995



DIESEL DROP INS
6 9-7 3 3208-CAT
MARINE ENGINES

Engine TRANSMISSION WAREHOUSE, Inc.

REMANUFACTURED
ENGINES AND
TRANSMISSIONS

2857 Peters Mtn Rd
Halifax, PA 17032

1-800-507-4359

LOCAL
717-896-2481

FAX:
717-896-2483

ENGINES ON
SPECIAL ARE
CASH & CARRY
DELIVERY
AVAILABLE

DON'T FUSS! CALL US!

100,	5%	86-90	81-86
88 93 2 8 F1 \$1049	Discount for cash or check	2 9 \$1499	302 TK \$1049
GM		Ford	Ford MI.

NATIONWIDE
AND CANADA

CALL US

FOR YOUR INSTALLATION NEEDS

BEST WARRANTY IN THE INDUSTRY

WARRANTY 36 MONTHS 100,000 MILES

**FREE TOWING WITHIN 25 MILE RADIUS
W/ENG. OR TRANS.
INSTALLATION**



GRIMES TRUCK CENTER

12835 Salem Avenue • Hagerstown, Maryland 21740 • 301/790-2200

INTERNATIONAL RENEWED ENGINES 7.3L ENGINE

* 24 mo. unlimited mileage warranty *

- Delco Remy is the ONLY Authorized remanufacturer of V8 engines for International®.
- All engines are manufactured using parts from OEM approved suppliers
- All engines are final factory tested using computer controlled equipment.
- Our extensive warranty is honored at International dealers across the United States and Canada They can provide you any service or part sales you require for your 7 3L diesel vehicle
- Through an exclusive agreement with International, Delco Remy IS THE ONLY REMANUFACTURER providing new cylinder heads on 7 3L engines, as required
- Delco Remy utilizes no heavy laced or welded cylinder heads

991515C94 Trimm'd 7.3L Natural Aspirated, 1987+ International
991520C93 Trimm'd, 7.3L Natural Aspirated, 1987+ F Series

The Best Value in the Industry

With the improved design, increased quality, leading warranty coverage, competitive pricing and the reputation of International and Delco Remy standing behind the product, you will have the piece of mind you need and the value you demand.



\$4575⁰⁰
Exch.

800-474-6371

301-790-2200

CHEVROLET GMC

Sutliff

GM PARTS

GENUINE GM PARTS FOR ALL GM VEHICLES

800-932-0284

Free Delivery Routes In 12 Counties In Central PA
Call For Specifics

25 PARTS PROFESSIONALS TO SERVE YOU
ENGINES - TRANSMISSIONS
A.C. DELCO - SHEET METAL
ALL IN STOCK AND PRICED RIGHT
IF YOU NEED GM PARTS
WE'VE GOT WHAT YOU NEED

SUTLIFF GM PARTS

**13th & Paxton
Harrisburg, PA**



We Want Your Business

A **GM** Goodwrench Service Plus Dealer

The Plus means better.

CHEVY TRUCK

OLDS

BUICK

CADILLAC

PONTIAC