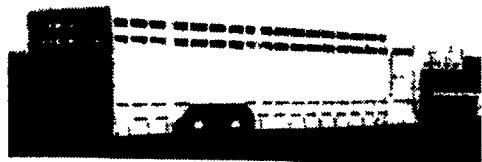


Featherlite Trailers



Model 8200 - 8' x 28' stock trailers
Available In Many Sizes

All Aluminum • 6 Year Warranty
Titan Flat Beds

Pine Shavings
Peanut Hulls

48' Self Unloading Trailers



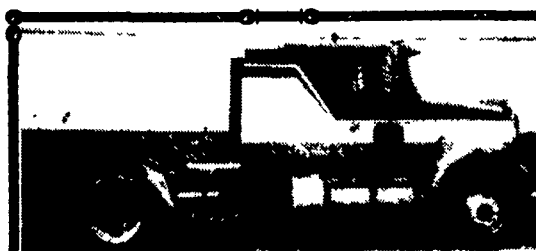
HUFFMAN

TRAILER SALES
AND LITTER SERVICE INC.

Phone 1-800-825-2545



Moritz 16' Grain Dump Trailer,
Grain & Barn Doors, Shed Kept, Original Tires,
Three Axles w/Brakes **\$6,500 OBO**
540/877-1047 After 7:00 PM



(22) (19) 1987 White, 320 HP, Detroit,
9 Speed, Air Ride Cab, P/S, S/A and
Some With Tag Axle, Eaton 3.70 Rears,
295/75R22.5 Tires
\$4,800 and Up

LEID DIESEL SERVICE

Service - Sales - Parts
Specializing in Detroit Diesel

237 Green Hill Road, Newville, PA 17241
Phone 717-776-7725 Fax 717-776-4127

'91 Dodge 150 Power
Ram, 4x4, 318 auto, PS,
PB, AM-FM cass., dark
blue w/matching fiber-
glass cap, new radiats,
one owner, excellent con-
dition, \$7,900. 717-733-2873

'90 Ford F350, dual whl.
w/9' stake body, 300 EFI,
auto, PS, PB, 410 ratio,
10,000 GVW, dark blue,
56,000 miles, \$5,900.
717-733-2873

'88 Dodge Dakota SE,
long bed, 3.9, V6, auto, PS,
PB, air, AM-FM, dark
blue w/matching fiber-
glass cap, 49,000 one
owner miles, new radiats,
excellent condition,
\$5,900. 717-733-2873

1989 GMC 6000, 26,000/
GVW diesel, 5spd, 2spd,
39K miles, 12' flatbed.
Trailer hitch & hook-up,
runs like new. \$9,500.
215-297-8354. Bucks Co.

'94 Dodge LE 150 short
whl. base, 8 pass., 318
magnum, auto, PS, PB,
PW, PDL, cruise, tilt, air,
AM-FM cassette, privacy
glass, 61,000 miles, excel-
lent condition, \$9,950.
717-733-2873

1969 White w/16' grain
body, air brakes, w/twin
cylinder dump, VG condi-
tion, \$5,000. 302-398-8754.

TRACTORS
87 Mack R686ST, 300 HP, 5 Sp., 34,000 Rears 11R
22.5.....\$16,000
85 Mack RS688 LST, 350 HP, 10 Sp. Mack, 38,000
Rears, Sleeper, 11R22.5.....\$13,000

TRAILER
42' Dorsey Flat, Budds 11R24.5.....\$3,500
All Equipment As Is - All Asking Prices
Must Be Seen To Appreciate
302/934-8506

Pierce's Trailer Sales
SCHAEFFERSTOWN, PA
(717) 949-3246

By mail R D #1, Box 360, Newmanstown, PA, 17073

Pierce's Trailer Sales
Authorized Dealer for
MONARCH, MORITZ, PA INTL.
thoroughbred horse trailers, stock trailers, utility,
dump, flat-bed, and equipment trailers

 1987 GMC 7000 Topkick with Van Box, 3208 Cat Diesel, 5 Spd, PS, Hyd. Disc Brakes, 33,000 GVW. \$8,750	 1981 International C&C S-1800 DT466, 5 Spd, 2 Spd, PS, Hyd Brakes \$4,250
 1991 GMC Topkick C&C 366, 5 Spd, PS, Hyd Disc Brakes, Super Sharp, Reduced To \$8,250	 1983 Ford L-700 C&C 429 Allison Auto, PS, 2 to Choose From \$2,500 Ea. Also 1-1986 C-800 Same specs
 1987 Ford F-800 With Front Mount Pitman Derrick Digger, 7.8 Ford Diesel, 5 Spd, 2 Sp, PS, A.B. 33,000 GVW. \$9,950	 1992 Ford L8000 S/A Tractor, 7.8 Diesel, 9 Spd, PS, A.B., Sharp Truck \$12,500

Many Other Cab & Chassis, Box, Utility, & Dump
Trucks To Choose From

**Klines Truck & Equipment
Sales & Service**
Hagerstown Md 21740
Located off I-81 at MD/PA Line
301-797-4068

Quic 'n' Easy
RECEIVER HITCH BY DMI™
The Latest In-Tow-Vation!

Cushioned
2" Receiver
Hitch

- Fits under your truck bumper, mounting directly to your truck frame
- Brings the receiver to your load - extends 7" and swings 12"
- Exclusive Proximity Hook-up - one person gets it right the first time
- Spring "Cush'n" takes the push/pull out of towing, lowering stress on the driver and truck drive train
- Tows whatever your truck is rated to tow - exceeds Class IV certification
- Accepts a variety of adapters drawbar, ball, step up or step-down, pintle hook and weight distribution system

Never Miss a Hitch Again. **DMI**

no need to match up receiver extends 7" swings 12" left to right back up to lock pull forward to align

Weaver Distributing
1-800-Weaver-D
RR2 Box 470 Fredericksburg PA 17026

MOTOR TRUCK EQUIPMENT COMPANY

Always Open **KENWORTH** USED TRUCK SALES Carlisle 717-766-8000

"WE BUY USED TRUCKS" Call: Tim Mitchell (717) 766-8000

 1996 Volvo Cummins N-14 8LL Transmission, 4.89 Rears, 17-1/2 Foot Aluminum, J&J Body P.O.R.	 1996 Peterbilt 379 Cat Powered, 10 Speed Trans, 4 33 Rears, 18-1/2 Ft Cobra Aluminum, Air Suspension P.O.R.
 1996 Mack E-7 350 HP, 8LL Transmission, Camelback Suspension, 16-1/2 Foot, Benson Aluminum P.O.R.	 1997 T600 Aerocab 430/470 Detroit, RTL0 Ten Speed, 3.70 Rears, Aluminum Wheels, KW Air Ride P.O.R.

GET READY FOR WINTER

Now's the time to get ready for winter. Western has a full line of plows ready to take on winter's worst - Pro-Plows in 4 blade sizes; Poly Plows in standard and Pro versions; and the 9' and 10' Heavyweights for trucks in the 15,000-27,000 GVWR range.

WESTERN

**Yarnall's
Equipment Co., Inc.**
4171 Horseshoe Pike (Rt. 322)
Honey Brook, PA 19344
Toll Free:
1-888-900 - SNOW (7669)

25 Ton Eager Beaver
Small Enough To Pull Behind Your Dump Truck,
Big Enough To Haul Your Medium Size Excavator,
Only 8 Degree Loading Angle
See Binkley & Hurst Bros. Inc. Today

25XPT EASY LOADER:
25 Ton Capacity Tri-Axle, 8° Degree Loading Angle

- CAPACITY: 50,000 Lbs
- Trailer Weight 11,200 Lbs
- Overall Width 102", Length 34'4"
- Deck Height: 34"
- Deck Length: 22' Flat, 6' Beavertail
- Ramps: 72" Long x 21 1/4" Wide
- Optional Aluminum Extension Ramps

Call 1-800-414-4705 717-626-4705
Ask For Dean

Model 35GSL/S4S: 35 Ton Detachable Gooseneck, Non-Ground Engaging

Also 50-Ton In Stock

Good Financing Available With Credit Approval

Eager Beaver

Model 20XPT EASY LOADER

- Capacity 40,000 lbs
- Trailer Weight 8,400 lbs
- Overall Width 102" Length 31'4"
- Deck Width 102", Length 25', Height 34" (Optional 96" Width)
- Ramps 72" Long x 21-1/4" Wide Range 102" Max 23" Min
- Tires Eight 215/75R17.5 (H)

EASY LOADER
Low 8 Degree Loading Angle Fits Most Job Applications

- Pavers • Dozers • Rollers • Excavators
- Loader Backhoes

NEW Eager Beaver TRAILERS

MODEL 10HA: 10 Ton

- Capacity 20 000 lbs at 54 MPH
- Trailer Weight 5,800 lbs
- Deck Width 96", Length 24', Height 32"
- Overall Width 96", Length 29'6"
- Tires Eight 8.75x16.5 (E)

BINKLEY-HURST BROS. INC.

133 Rothsville Station Rd.
P.O. Box 0395, Lititz, PA 17543-0395
(717) 626-4705 1-800-414-4705 Fax (717) 626-0996
www.binkleyhurst.com