

96 flatbed trailer, flip up tail & ramps, 20", \$3700. 717/259-0006.

1989 Peterbilt, 60 series Detroit, 63 double bunk, 9-spd Fuller air ride, cruise control, used daily, AC, good rubber, \$19,995. 717/624-4342.

1977 Ford pickup, 351 engine, 4WD, great for farm pickup, best offer. 717/733-0933.

Liftgate, Maxon, 2,500 lb tuck-away, complete, ready to mount, excellent condition, best offer. 410-838-4828 before 9pm.

1973 Ford 45' hi ronger bucket truck, new engine w/approx 4,000mi, 6 new tires, \$6,000. 610-458-0384.



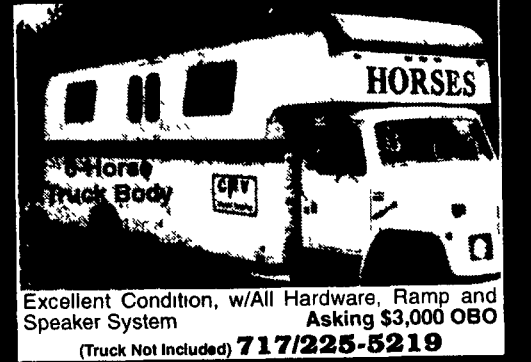
FOR SALE

1982 MERCEDES BENZ 300CD
Turbo Diesel, 2 Dr. HardTop, 168,000 Miles, Champagne Color, Runs Good, Looks Good
Price Reduced \$4,250
717-626-6351

FOR SALE

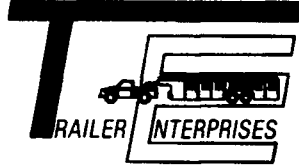


Reading 8 Ft. Utility Box
w/Canvas Cover
Call 717-270-6600



Excellent Condition, w/All Hardware, Ramp and Speaker System
Asking \$3,000 OBO
(Truck Not Included) **717/225-5219**

"Revvin' to take care of ALL your trailer needs."



HAS BUILT A REPUTATION



United Expressline 8x16 Cargo Moritz CBS 616 **EBY Aluminum** 7x20 Gooseneck

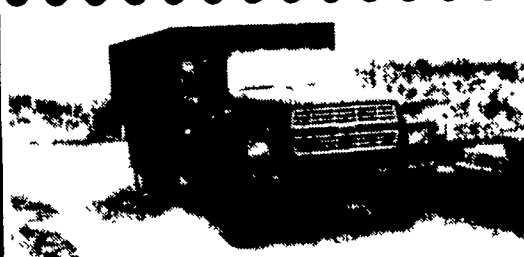
NEW & USED: STOCK - HORSE - CARGO - INDUSTRIAL - UTILITY - CAR HAULERS

Trailer Enterprises is here to serve you. We are a full service facility providing YOU with the very best service available in the industry!

TRAILER ENTERPRISES, INC.
13121 MAUGANSVILLE ROAD
HAGERSTOWN, MD 21740

Just give us a call at (301) 791-5343.

Hours: 8AM-5PM Monday-Friday
9AM-12 Noon - Saturday



1987 Ford F800
16' Grain Body Dump
185 HP Diesel 50,000 miles
Air Brakes 5 spd. & 2 spd. Rear

\$19,900

610-857-1816



1994 LTL Ford 9000
3406C, 425 HP, 18 Speed, Jake 16 Front, 46 Rears with 4 Wheel Lock-in Hendricksen Suspension
\$37,500

1985 Ford 9000

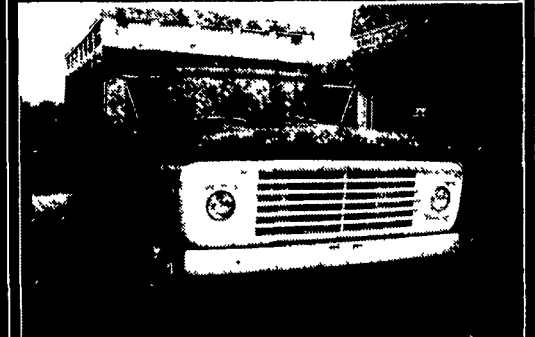
350 Cummins, 2900 Gallon Tanker, 8 Speed, 350 CPM, Vac/Press Pump

\$12,500

(717) 733-7226



'77 Chevy, V6 Detroit, 240 hp, 28,700 GVW, 26' Roll Back and Dump. \$8,900 OBO
(717) 626-1394



1986 IVECO Z340 - \$7,900
Turbo Diesel, 16½' Roll Back

1972 CATTLE TRUCK - \$2,800
12' Box

M.M. WEAVER & SONS, INC.
Leola, PA 17540 • (717) 656-2321



WOLF MOTOR CO.

OVER 60 YEARS IN BUSINESS!
ROUTES 72 & 283, LANCASTER, PA 17601

CENTRAL PA'S FORD TRUCK DEALER

Parts & Service Hours: 7 AM - 7 PM Mon - Thurs
7 AM - 5 PM - Friday
8 AM - 3 PM Sat

717-431-0701

Toll Free 800-637-6612



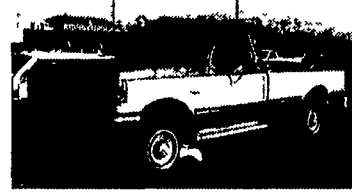
1995 FORD LTA 9000
3406E, 355 HP, 10 Sp OD, 24,000 Miles, Air Ride
\$29,900



1995 FORD F350 CREW CAB
Centurion Conversion, Power Stroke Diesel, Auto, Leather, TV, VCR, Tow Pkg., 50,000 Miles
\$29,900



1997 FORD F700
22 Van Body, 370 V-8, Gas Eng., 22,000 GVW, 100,000 Miles
\$21,900



1988 FORD F250 4X4
V-8, Auto, 90,000 Miles
\$6,500



1997 MORITZ FLAT DECK/TRAILER
3 Axles
\$5,300



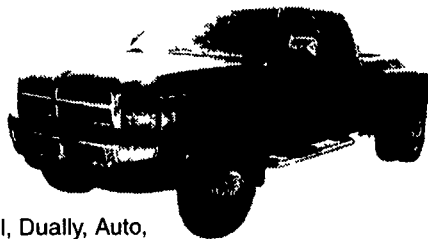
2000 F650's & F750's
Various Equipment
6 TO CHOOSE FROM!

THE HONDRU EXPERIENCE

OVER 200 TRUCKS AVAILABLE FROM OUR 4 DEALERSHIPS

E-TOWN CHEVROLET

Oldsmobile Pontiac
Route 230 E-Town • 717-361-7776
1997 RAM CLUB CAB, 4x4



Diesel, Dually, Auto, PS, PW&L, PB

E-TOWN DODGE

Route 230 E-Town • 717-367-6644

1992 DODGE W250 4x4 REG. CAB

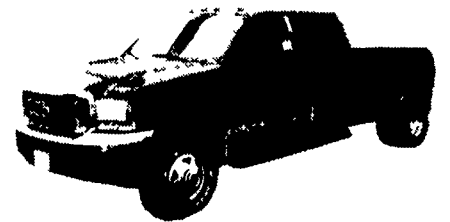
Cummins Turbo Diesel, 4 Speed, PW&L, Cruise/Tilt



PHILLIPS FORD

Route 72 Manheim • 717-665-3551

2000 FORD F350 XLT CREW CAB 4x4

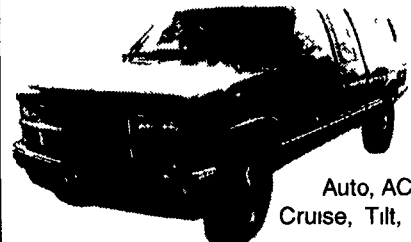


Dually, Auto, Power Stroke V8, Diesel, Equipped

MANHEIM CHRYSLER PLYMOUTH GMC

Route 72 Manheim • 717-665-2473

1997 CHEVY SILVERADO 4x4 EXT. CAB



Auto, AC, PW&L, Cruise, Tilt, 11,000 Miles

All prices Include Rebates, Exclude Tax, Tag and \$40 Dock Fee

LOADS OF USED PICKUPS
CALL ANY STORE FOR DETAILS

Email - hondruauto@aol.com

OVER 20 CHASSIS IMMEDIATELY AVAILABLE FOR BODY INSTALLATION
AT OUR LOCAL BODY COMPANIES!