

Martin Tour, Reunion Oct. 23

NEW HOLLAND — Descendants of the Mennonite Martins who settled in Lancaster County in the early 1700s are organizing for the first time a tour of sites of significance to early Martin history followed by a Martin family reunion supper. All descendants of these Martins and others interested in the pioneering settlers in this area are invited.

Check the phonebook for

Lancaster and the northeast part of the county. Martins easily outnumber the Millers, Weavers, Zimmermans and Smiths. Most of the Martins are descended from Christian and Ells Martin and their sons David, Henry, Jacob and Christian who arrived in the New World from Switzerland and Germany between 1722 and 1732 seeking good land for farming and religious freedom.

To research their history and document their descendants, Darvin Martin of Lancaster and Raymond Martin of Northern Virginia had launched The Martin Family History and Genealogy Project last year. Their computerized database already contains 19,000 names. They expect to surpass 100,000 names as Martin descendants find out about the project and contribute their part of the family genealogy. You can find some of these names, plus stories about the family ancestors, on the Internet at www.martin.simplenet.com.

To promote understanding and appreciation of the extraordinary pioneering spirit of these early settlers and the religious faith that motivated and sustained them, the two Martins are planning an all-day series of events on Saturday, October 23. The general public as well as Martin descendants are welcome to register for any or all of these activities.

Seminar: The Lancaster Mennonite Historical Society is sponsoring a seminar from 9 a.m. to noon where Darvin and Raymond will present findings

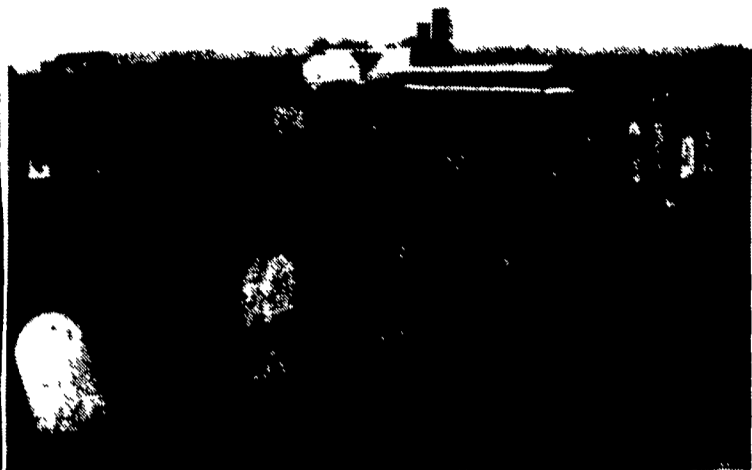
on European Martin origins, Lancaster County settlement, and migration outward. Stories of their early life and faith will be recounted. Darvin will discuss his recent article in Pennsylvania Mennonite Heritage which challenges some traditions about Martin history. Gaps in information and future directions of the project will be reviewed.

Tour: the bus tour will leave from Weaverland (brick) Mennonite Church parking lot at 2 p.m. It will include the site of the original David Martin homestead as well as the home sites of Henry and Christian Martin and the early Weber settlers. The outline of David's 370-acre farm will be traced. Homes of other prominent Martins, as well as several cemeteries, including the original Weber/Martin family cemetery will be visited.

Reunion Supper: following the tour, at 5:30 p.m., there will be a simple Martin reunion supper in the Weaverland Mennonite Church basement. At 7 p.m. a 51-minute video describing the history of

Weaverland Mennonite Church will be shown. Martins figure prominently in this church history.

Registration: For the morning seminar, register by contacting the LMHS (717) 393-9745. Cost is \$8 (\$10 for non-members). The expected cost of the afternoon tour is \$5 per person. For the supper, people can bring a covered dish or dessert, or pay \$4 for a simple catered meal. To register for the tour and/or reunion supper, contact Elizabeth S. Martin, 433 South Kinzer Ave., Apt. 412, New Holland, PA 17557, or call her at (717) 354-6467.



The old Weaverland cemetery, located east of Route 897 in the Weaverland Valley is the burial place of the earliest Martins, and will be part of the tour during the Martin Reunion.

Security & Peace Of Mind



Livestock Facility Warranties

- ✓ 50-year protection against decay or insect attack on preservative treated columns and preservative treated lumber
- 10 year protection on the following:
 - ✓ Snow-load damage to structure with no weight limit
 - ✓ Red rust, including damage caused by atmospheric pollutants
 - ✓ Wind load damage to our optional AlumaSteel® sliding doors (with no wind velocity limit)
 - ✓ Wind load damage to structure including hurricanes and tornados (with no wind velocity limit)
 - ✓ All warranties include materials and labor and are not prorated

Founded in 1903

Unique to the industry, all salespeople, office personnel, plant workers, engineers, estimators, architects and construction crews are employed directly by Morton Buildings, Inc. This protects the customer from the uncertainties of working with a dealership network. The customer has the distinct advantage of dealing direct with the company... no middle men.

800-447-7436



**MORTON
BUILDINGS**

P.O. Box 399, Morton, IL 61550
www.mortonbuildings.com
©1999 Morton Buildings, Inc.
WV Contractor's License #WV007848

Gettysburg, PA 717-624-3331

Pleasant Unity, PA 412-423-7477

Meadville, PA 814-336-5083

Phillipsburg, NJ 908-454-7900

Centre Hall, PA 814-364-9500

**BUY,
SELL,
TRADE
OR
RENT
THROUGH
THE
CLASSIFIED
ADS
IN
Lancaster
Farming**

PHONE
717-626-1164
OR
717-394-3047

717-733-6058
Mon., Tues.,
Wed., Fri.
8 AM to 5 PM
Thurs.
7 AM to 5 PM



**BOWMAN'S
STOVE & PATO**

Vermont Castings
**Wood
Stoves, GAS
STOVES
AND
FIREPLACES**

1060 Division Highway 322 East,
Ephrata, PA 17522
1 Block East of Rt. 222
(717) 733-4973
800-642-0310
www.bowmansstove.com
Mon., Tues., Wed. 10 to 6; Thurs.
Fri. 10 to 8; Sat. 10 to 4