



OCTOBER 4-10, 1999

NEW MOON, OCTOBER 9.

### PUMPKIN FLOOD

The famous flood that occurred on the Delaware and Susquehanna Rivers 213 years ago (October 5, 1786) took the name Pumpkin Flood when heavy rains helped clear the fields of the autumn's harvest. In Pennsylvania, Harrisburg reported a surge of 22 feet on the river. One observer of the Pumpkin Flood remembered, "Heavy pumpkins came tumbling downstream like great orange cannonballs and had much the same effect when houses or men stood in their way." Luckily local growers weren't competing in the giant pumpkin contests we read about today, with some squashes growing to over 600 pounds!



### The OLD FARMER'S WEATHER PROVERBS

*When the birds and badgers are fat in October, expect a hard winter.*

*Much rain in October, much wind in December.*

*In October, dung your field and your land its wealth shall yield.*

*As October, so next March.*

*Mischief comes by the pound and goes away by the ounce.*

- Sojourner Truth

### TIP OF THE WEEK

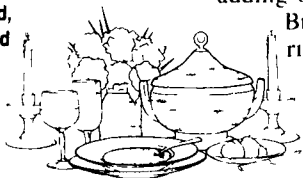
Keep a canvas bag in the car to hold all those items you pick up while running everyday errands.

### PUMPKIN SOUP

- 1 pumpkin (about 2 pounds)
- 1 cup water
- 1-1/2 pints boiling milk
- 3 tablespoons butter
- 1 teaspoon sugar
- salt and pepper, to taste
- 3 slices stale bread, cubed

Seed and pare the pumpkin and cut into small pieces. Simmer in a soup kettle with water for 1 1/2 hours. Put through a sieve and return to kettle, adding other ingredients. Bring to a boil, stirring occasionally, and serve.

Makes 6 servings.



www.almanac.com

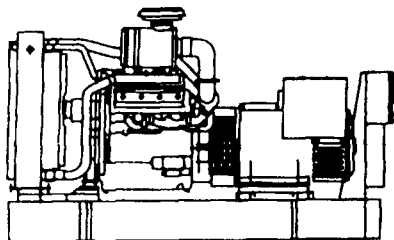
United Feature Syndicate

(Printed in the U S A)

200 Madison Ave  
N Y, NY 10016  
(212-293-8500)

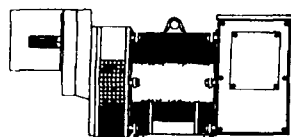
## GENERATOR SYSTEMS

1-800-779-8809



New & Used 5 to 2500 KW  
Diesel • Propane • Natural Gas

24 Hour Emergency Service  
Sales - Installation  
Maintenance Contracts • Rentals



### Tractor Driven

Generators 12-100 KW  
1800 RPM Brushless  
Units in Stock

**DYNA TECH** Ind.

Dynamic Technologies

**DYNA-TECH INDUSTRIES, LTD**

602 E. Evergreen Rd., Lebanon, PA 17042

717-274-8899 FAX 274-8934

Visit us on The Web Site: <http://www.dynagen.com>  
Ask About Our Lightning & Surge Protection Units  
Panel Mount • Plug-In • Electric Fence Protection



Leasing Available

### Westminster Livestock Auction

Hagerstown, Md.  
September 28, 1999

Report supplied by auction  
SLAUGHTER COWS: 115 HEAD, 1.00-2.00 LOWER. UTILITY 34.00-38.00; HIGH DRESSING 39.00-42.50; CANNERS 29.00-34.00; SHELLY 29.00 DOWN.  
BULLS: 3 HEAD. YG#1 1440 LBS. AT 47.00; 2 YG#2 1700 LBS. TO 43.75.  
FED STEERS: 14 HEAD. HIGH CHOICE TO PRIME 1200-1400 LBS. 64.00-67.75; CHOICE #2-3 1100-1400 LBS. 60.00-63.50; SELECT 1300-1450 LBS. 54.00-57.25.  
FED HEIFERS: 10 HEAD. 1 CHOICE 1300 LBS. AT 63.75; 1050-1175 LBS. 54.00-57.00; CHOICE HOLSTEINS 1300-1535 LBS. 47.50-50.00.  
CALVES: 130 HEAD. CHOICE 200-325 LBS. 70.00-80.00; CULLS 85-110 LBS. 24.00-32.00, 60-85 LBS. 18.00-27.00; HOLSTEIN BULLS RETURNING TO FARM 10.00 LOWER. #1 95-120 LBS. 95.00-117.00, 88-94 LBS. 50.00-75.00; #2 90-110 LBS. 60.00-90.00, 84-90 LBS. 32.00-42.00; BEEF X BULLS 75-90 LBS. 50.00-90.00; BEEF X HEIFERS 75-90 LBS. TO 60.00; HOLSTEIN HEIFERS #1 95-120 LBS. TO 280.00; #2 85-110 LBS. 140.00-245.00; 75-80 LBS. TO 102.00.  
BUTCHER HOGS: 61 HEAD, 3.00 HIGHER. #1&2 230-270 LBS. 36.00-36.75; #1&3 240-275 LBS. TO 35.00, 300-340 LBS. 30.00-31.50, 190-210 LBS. 30.00-32.00.  
SOWS: 3 HEAD 500-700 LBS. 24.00-26.25.  
BOARS: 9 HEAD 300-700 LBS. 4.00-6.00.  
STOCK CATTLE: 209 HEAD. STEERS MED. AND LARGE FRAME 200-400 LBS. 79.00-96.00; 400-600 LBS. 74.00-86.50; 600-700 LBS. 65.00-75.00; HOLSTEINS 700-900 LBS. 49.00.  
HEIFERS: MED. AND LARGE FRAME 200-400 LBS. 70.00-89.00;

400-600 LBS. 68.00-79.00; 600-700 LBS. 61.00-69.50; 700-850 LBS. 57.00-64.00.  
BULLS: MED. AND LARGE FRAME: 200-400 LBS. 71.00-88.00; 400-500 LBS. 70.00-79.00; 500-600 LBS. 67.00-70.00; HOLSTEINS 200-400 LBS. 60.00-68.00.  
SHEEP: 20 HEAD. LIGHTWEIGHTS 34.00-49.00; HEAVY 30.00-36.00.  
LAMBS: 95 HEAD, MOSTLY STEADY. HIGH CHOICE 100-125 LBS. 68.00-75.00, 80-100 LBS. 73.00-84.00, 60-80 LBS. 80.00-93.00, 40-60 LBS. 83.00-98.00, 138-150 LBS. 58.00-65.00.  
GOATS: 180 HEAD. LARGE BILLIES 75.00-100.00; MEDIUM 55.00-75.00; LARGE NANNIES 45.00-70.00; MEDIUM 35.00-50.00; SMALL FLESHY 35.00-48.00; SMALL 20.00-35.00, SOME 7.00-15.00.  
PIGS AND SHOATS: 46 HEAD. BY THE HEAD 15-20 LBS. 9.00-12.00; 20-30 LBS. 17.00-20.00; BY THE LB. 80-100 LBS. 39.00-40.00; 8 BOARS 110 LBS. AT 26.00; STOCK BOARS 8 HEAD 200-280 LBS. 12.50-19.00.

HOLSTEINS 60.50, HOLSTEINS 570 LBS. 56.00; HOLSTEINS 550-605 LBS. 37.50-44.50; HEIFERS 300 LBS. 61.50.  
CALVES: STANDARD AND GOOD 70-95 LBS. 44.00-58.00; UTILITY 70-85 LBS. 25.00-30.00.  
FARM CALVES: #1 95-120 LBS. 110.00-120.00, #2 95-115 LBS. 94.00-106.00; HOLSTEIN HEIFERS #1 95-115 LBS. 285.00-302.50, #2 85-90 LBS. 95.50-177.50; BEEF TYPE BULLS AND HEIFERS 105-130 LBS. 94.00-130.00.  
HOGS: 45-50% 218-255 LBS. 31.50-32.00.  
SOWS: US#1-3 500-700 LBS. 24.00.  
BOARS: 200-240 LBS. 10.00-11.00, 415 LBS. 6.00.  
SHEEP: GOOD AND CHOICE 65-95 LBS. 73.00-85.00.

### Lebanon Valley Livestock

Fredericksburg, PA  
September 28, 1999

Report Supplied by Auction  
STEERS: CHOICE 2-3 1110-1270 LBS. 62.00-66.00, SELECT 1-3 58.00-61.75; STANDARD 1-2 53.00-56.00.  
HOLSTEIN STEERS: CHOICE 2-3 1555 LBS. 56.25; SELECT 1-2 54.00-55.00.  
HEIFERS: CHOICE 2-4 1290 LBS. 63.00; SELECT 1-3 56.00-61.50.  
COWS: BREAKERS 75-80% LEAN 38.75-40.00; BONERS 80-85% LEAN 37.25-38.50; LEAN 85-90% LEAN 35.50-37.00, SHELLS DOWN TO 27.00-34.00.  
BULLS: YG#2 1930-2260 LBS. 48.25-50.75; YG#2 1060-1675 LBS. 41.50-45.75.  
FEEDER CATTLE: STEERS 451 LB.

### North Jersey Livestock

Hackettstown, NJ

Report Supplied by Auction  
Tuesday, September 28, 1999

CALVES .05-3.25.  
COWS .20-.42.  
EASY COWS .01-.39% .  
FEEDERS 300-600 LBS. .30-.95.  
HEIFERS .29-.71.  
BULLS .32%-.61.  
STEERS .37%-.63.  
HOGS .33.  
ROASTING PIGS EACH 5.00-29.00.  
BOARS .07-.32.  
SOWS .19-.22% .  
SHEEP .20-.48.  
LAMBS EACH 25.00-64.00.  
LAMBS PER LB. .39-1.21.  
GOATS EACH 36.00-117.50.  
KIDS EACH 5.00-71.00.  
HIDES EACH 9.50.  
827 TOTAL.



## Heavy Duty Bale Movers

Finished with Baked on TGIC Polyester Powder Coating  
With Kverneland Forged Steel Spears • Electrically Heat Treated  
These spears are stronger & allow easier bale penetration

**COM 2502**

- Fits any 3 pt hitch or loader boom with 1 or 2 cylinders
- Easy to change from 1 to 2 spears
- 2500 lb capacity

**3 PT 2502**

- For 3 point hitch
- Easy to change from 1 spear to 2
- 1500 lb capacity

**2 PT 1000**

- Attaches to lower 3 pt arms only
- Safety chains prevent flip around
- 1000 lb capacity

**3 PT 1252**

- Easy to change from 1 spear to 2
- 1250 lb capacity
- 1 7/8" CRS-C1144 steel spear

**Feed Big Round & Regular Bales or Stacks**

Hay Bale Feeders with 4', 5', 6', 8' & 10' panels

**SSL 2500**

- Great for front loaders
- Mounts in minutes
- 1500 lb capacity

**PFL 4000**

- Front end loader fork
- Includes chain & binders
- 1500 lb capacity

**Two Coat Process!** Added Value With Our 2 Coat Process!

- 1 Five step metal preparation, including iron phosphate conversion coating, to enhance adhesion & prevent undercoat corrosion
- 2 Zinc rich epoxy powder undercoat
- 3 TGIC polyester powder top coat, baked at 400° to fuse coats, forming a cross link molecular bond

## Paul B. Zimmerman, Inc.

295 Woodcorner Rd. • Lititz, PA 17543

717/738-7365

1 mile West of Ephrata

Call or write for additional information & the name of your nearest dealer

Hours  
Mon thru Fri 7-5  
Sat 7-11