

LANCASTER COUNTY LIVESTOCK MARKET AUCTION

Lancaster Livestock

New Holland, Pa.
Monday, September 27, 1999
 Report Supplied By PDA

| CATTLE | CALVES | HOGS |
|-----------|--------|------|
| MONDAY | 100 | 16 |
| LAST WEEK | | 184 |
| LAST YEAR | 728 | 52 |

CATTLE Compared to Thursday, there were not enough slaughter steers, heifers, or Holstein steers on offer for an adequate market test. The variety of the light supply was so wide that comparisons were not possible. A thin test of slaughter cows and bulls sold mostly steady. Supply included 38 percent slaughter steers and 23 percent slaughter cows.

SLAUGHTER STEERS Select and Choice 2-3 1105-1425 lbs 59.50-63.85. Few Select 1-3 935-1140 lbs 54.00-55.00.

HOLSTEIN STEERS Select and Choice 2-3 1280-1375 lbs 54.85-55.75.

SLAUGHTER HEIFERS Few Choice 2-4 1090-1200 lbs 61.75-63.00. Few Select and low Choice 2-3 1190-1360 lbs 56.75-62.25. Few Select 1-3 905-1125 lbs 50.00-55.75.

SLAUGHTER COWS Few Breakers 75-80 pct lean 41.50-42.75. Lean 85-90 pct lean 31.75-34.50, low dressing down to 29.00.

SLAUGHTER BULLS Few Yield Grade 1 1385-1750 lbs 50.00-54.75, individual X-bred 61.25. Yield Grade 2 1165-2195 lbs 41.25-46.50. Bullocks: Couple Select 1-3 840-1020 lbs 54.50-57.50.

SLAUGHTER CALVES Few Good and Choice 350-500 lbs 70.00-74.00.

SHEEP Compared to last week, slaughter lambs sold steady to 3.00 lower and slaughter ewes traded 1.00 lower.

SLAUGHTER LAMBS Choice and Prime 2-3 70-90 lbs 80.00-84.00, 90-110 lbs 74.00-80.00, 110-140 lbs 70.00-74.00.

SLAUGHTER EWES Utility and Good 1-3 28.00-36.00. Aged bucks 220-260 lbs 29.00-31.00.

GOATS (sold by the head) Billies Large 95.00-110.00. Medium 75.00-85.00. Nannies Medium and Large 45.00-52.00. Kids Choice and Prime 40.00-55.00.

Vintage Livestock

New Holland, Pa.
September 27-28, 1999
 Report Supplied By PDA

| CATTLE | CALVES | SHEEP |
|-----------|--------|-------|
| THIS WEEK | | 1036 |
| LAST WEEK | | |
| LAST YEAR | | |

LAST WEEK 840
 1038 2 0
 LAST YEAR 669
 765 0 2

CATTLE: Compared to Thursday, slaughter steers and heifers sold steady. Buyers showed good demand and the quality of the good offering was outstanding for this time of year. Holstein steers were only lightly tested. Slaughter cows sold 1.00-2.00 lower, instances 2.50 lower on the fleshier types (less than 85 pct lean). A light run of slaughter bulls sold steady. Supply included 50 percent slaughter steers and 39 percent slaughter cows.

SLAUGHTER STEERS: High Choice and Prime 2-4 1190-1400 lbs 66.00-68.50, few outstanding 69.00-70.00. Choice 2-3 1150-1455 lbs 64.10-66.85, few high dressing 1-2 up to 67.75; individual 1640 lbs 63.70. Select and low Choice 2-3 1045-1565 lbs 59.00-65.00. Few Select 1-3 1140-1260 lbs 52.00-61.50.

HOLSTEIN STEERS: Choice 2-3 1215-1535 lbs 56.25-56.85, individual 1710 lbs 53.00. Select and low Choice 2-3 1255-1495 lbs 53.00-54.75.

SLAUGHTER HEIFERS: Few Choice 2-4 1100-1445 lbs 61.25-62.85, high dressing individual 1110 lbs 65.50. Select and low Choice 2-3 1020-1450 lbs 56.00-61.25.

SLAUGHTER COWS PERCENT LEAN WEIGHT BULK

LOW DRESSING

Breakers 75-80 pct lean over-1400 lbs 37.50-40.50 34.75-37.75

Boners 80-85 pct lean over-1200 lbs 34.50-38.25 33.00-36.25

Lean (Hi-Yield) 85-88 pct lean over-1200 lbs 32.75-36.25 31.00-33.25

Lean 88-90 pct lean over-1000 lbs 31.75-34.00 28.00-31.75

Lean (Light-Wt) 85-90 pct lean 750-1000 lbs 28.00-31.25 25.00-29.50

SLAUGHTER BULLS Individual

Yield Grade 1 1460 lbs 49.00. Yield Grade 2 1340-2115 lbs 42.00-44.50

Bullocks Select 1-3 1225-1465 lbs 44.00-56.00.

FEEDER STEERS Medium 1-2 package 511 lbs 79.50. Large 2 (Holsteins) package 695 lbs 58.50.

FEEDER HEIFERS: Medium and Large 1-2 300-375 lbs 73.00-74.00, package Charolais 663 lbs 65.25, package blacks 768 lbs 63.75.

FEEDER BULLS Medium 1-2 package 326 lbs 82.00, package 435 lbs 79.50.

CALVES Compared to last week, veal calves sold 1.00-5.00 higher on a good test. The Holstein bulls returning to veal barns traded 20.00-38.00 lower as buyers were very price conscious.

Holstein heifer trading was also much slower than last week. Prices were 10.00-20.00 lower and demand showed the first signs of weakening, after months of

very active trading. Supply included 745 head in the State graded sale and 83 percent returned to feed.

VEALERS Good and Choice 70-110 lbs 18.00-25.00, few up to 30.00. Standard and low Good 60-90 lbs 10.00-20.00.

RETURNED TO FARM: Holstein bulls 100-125 lbs 80.00-108.00, 90-100 lbs 57.00-85.00. Plainer-type bulls 90-115 lbs 30.00-64.00, few weaker calves down to 25.00. Holstein heifers 80-115 lbs 297.00-329.00. Plainer heifers 80-110 lbs 270.00-297.00; 70-80 lbs 145.00-190.00. Few beef-type bulls and heifers 85-110 lbs 72.00-110.00.

New Holland Livestock

NEW HOLLAND, PA
THU SEPTEMBER 30, 1999

| CATTLE | Calves | Sheep | Goats | |
|-----------|--------|-------|-------|-----|
| THURSDAY | 1349 | 738 | 469 | 382 |
| LAST WEEK | 1391 | 816 | 449 | 350 |
| LAST YEAR | 1351 | 693 | 499 | 418 |

CATTLE: Compared to Tuesday, slaughter steers and heifers sold fully steady. The good run included several consignments of extremely high quality cattle, with demand being very good for all weights and grades. A good test of Holstein steers sold steady to .50 higher. Slaughter cow prices were mostly firm with the big fleshy cows (less than 85 pct lean) selling 1.00-2.00 higher. Slaughter bulls traded steady to 1.00 lower. Supply included 46 percent slaughter steers and 39 percent slaughter cows.

SLAUGHTER STEERS: High Choice and Prime 2-4 1180-1470 lbs 66.00-68.50, few up to 69.00. Choice 2-3 1105-1480 lbs 64.00-66.75, few high dressing 1-2 up to 68.00 and low dressing 4-5 down to 62.00; few 1500-1550 lbs 63.00-64.25. Select and low Choice 2-3 1075-1445 lbs 59.50-65.00; 1535-1650 lbs 57.50-62.25. Select 1-3 975-1470 lbs 54.75-61.75.

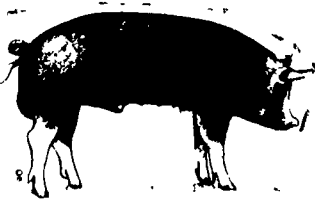
HOLSTEIN STEERS: Few high Choice and Prime 2-3 1180-1495 lbs 58.25-58.50.

VEALERS: Good and Choice 70-110 lbs 18.00-25.00. Standard and low Good 60-90 lbs 11.00-20.00.

SLAUGHTER CALVES: Few Good and Choice 200-350 lbs 75.00-95.00; 350-550 lbs 55.00-65.00. Standard 300-600 lbs 50.00-55.00.

RETURNED TO FARM: Holstein bulls 95-125 lbs 80.00-95.00. Plainer type bulls 90-120 lbs 45.00-87.00; 80-90 lbs 25.00-45.00. Holstein heifers 80-125 lbs 270.00-335.00. Plainer heifers 75-100 lbs 100.00-200.00.

SHEEP: Compared to Monday, slaughter lambs sold mostly steady with strength



starting to show up on the lightweights under 60 lbs. Slaughter ewes and aged sheep sold steady to 5.00 lower.

SLAUGHTER LAMBS: Choice and Prime 2-3 40-60 lbs 90.00-125.00; 60-100 lbs 75.00-90.00; 100-150 lbs 62.00-75.00. Good and Choice 1-3 40-60 lbs 75.00-95.00.

SLAUGHTER EWES: Good and Choice yearlings and 2 year-olds 45.00-55.00. Utility and Good 1-3 30.00-45.00.

Lancaster Co.

Weekly

NEW HOLLAND, PA
FRI OCTOBER 1, 1999

| CATTLE | CALVES |
|-----------|--------|
| THIS WEEK | 2485 |
| LAST WEEK | 2833 |
| LAST YEAR | 2748 |

CATTLE: Compared to last week's closing prices, slaughter steers and heifers closed fully steady. The market was mostly unchanged all week, but mild strength was evident on Thursday. This month's outlook is very good, with October futures on the rise and Western cattle trading at mostly 67.00 and 105.00-106.00. However, in the Northeast, farmer feeders are struggling to decide whether to restock their barns with many being short of feed. In addition, Virginia feeder cattle are reaching dangerously high levels and pushing breakevens well into the 70.00 range. Local Holstein steers ended steady to .50 higher this week. Slaughter cow prices were uneven but closed weak to 2.00 lower, especially on the leaner type cows (over 85 pct lean). Slaughter bulls sold steady to 1.00 lower. Supply included 47 percent slaughter steers, 4 percent slaughter heifers, 38 percent slaughter cows, 3 percent slaughter bulls, with the balance made up of feeder cattle.

SLAUGHTER STEERS: High Choice and Prime 2-4 1180-1470 lbs 66.00-68.50, few up to 70.00. Choice 2-3 1105-1480 lbs 64.00-66.85, few high dressing 1-2 up to 68.00 and low dressing 4-5 down to 62.00; 1500-1640 lbs 63.00-64.25. Select and low Choice 2-3 1045-1500 lbs 59.00-65.00; 1535-1650 lbs 57.50-62.25. Select 1-3 935-1470 lbs 54.00-61.75.

HOLSTEIN STEERS: Few high Choice and Prime 2-3 1180-1495 lbs 58.25-58.50. Choice 2-3 1215-1585 lbs

(Turn to Page A20)



Willier, Incorporated

Your Source for Quality Cattle

Licensed and Bonded Cattle Brokers

| | | |
|---------------|-------------|-----------------|
| DAIRY HEIFERS | BEER CATTLE | HERD DISPERSALS |
|---------------|-------------|-----------------|

Inside Pennsylvania: 717-626-3113 FAX: 717-626-1260
 Toll-Free Outside of PA: 1-800-485-2233

B&R CATTLE CO
 RD 1, Marietta, PA 17547
 Office Phone (717)653-8164
 Specializing in Stockers & Feeders
JOHN BOWMAN
 ph. (717)653-5728
RON RANCK
 ph. (717)656-9849

KIRKWOOD HAY AUCTION
 Hay, Straw and Grain Auction
EVERY TUESDAY 10:00
 Located Rt. 472 5 miles south of Quarryville or 6 miles north of Oxford corner of Rt. 472 and Noble Road
 Lloyd H. Kreider, Auctioneer AU 000513L
 No out of state checks

HAY, STRAW & CORN - SALE -
 Sale Starts Every Friday At 10 AM
GREEN DRAGON MARKET & AUCTION
 955 N. State St. Ephrata, Pa. (717) 738-1117
 1 mile North of Ephrata on N. State St.
 Out of State Buyers -Cash or Certified Checks Only

QUALITY FEEDER CATTLE
 Financing Available
 * Fixed Interest Rates • Interest Due when Cattle Are Sold • No Monthly Payments
SCARFF BROS. INC.
 Cattle Dealers • Licensed & Bonded
 2300 Fallston Road • Fallston MD 21047

| | | |
|--|--|---|
| Lance N. Scarff Farm (410) 877-0370 Fax (410) 877-7802 (410) 459-4865 | C. Howard Scarff, II Home (717) 445-4355 Fax (717) 445-7237 Mobile (410) 459-4864 | W. Conly Scarff Home (410) 838-5883 Mobile (410) 790-2650 |
|--|--|---|

• Contract Feeding Programs • Marketing of Finished Cattle • Dairy Heifers

Get more capacity and better service from Chore-Time's New Next Generation bin

High Capacity 40° roof (left) allows more storage and stays cleaner than conventional 30° roof (right)

HydroShield® Weather Guard prevents water from running down hopper

• ACCESS PLUS® permits easy clean out of the bin from the ground.

Call for pricing on bins assembled and delivered to your farm

Contracts available call for information
 ■ Layers ■ Broiler ■ Pullets ■ Hogs
 Call for our free brochure "What is contract production?"
 Replace your bulbs and save electricity with energy efficient Fluorescent Lights
 5-7-9 Watts 13 Watts
5.49 ea. | 5.79 ea.

Light Bulbs 25 to 100 Watts **36¢ Ea.**
 Brass Base - 5000 Hrs.

Authorized CHORE-TIME Master Distributor Since 1982

| | | |
|-----------------------|---|---|
| Northeast agr systems | Northeast Agri Systems Inc Flyway Business Park 139A West Airport Road Litz, PA 17543 Ph (717) 569 2702 1-800-673-2580 | Delmarva Store 305 University Ave Federalsburg MD 1-800-735-6361 |
|-----------------------|---|---|

VINTAGE SALES STABLES, INC.

NEW MONDAY SALES
 AT 10:00 AM
 SELLING HEIFERS, BULLS, STEERS, FEEDER & BUTCHER COWS

TUESDAY SALES
 10:30 A.M.
 SLAUGHTER CATTLE AUCTION
 STEERS, BULLS, HEIFERS, COWS, FEEDER CATTLE
 At Approx. 1 PM Selling Feeders

6:00 P.M.
 CALVES, SHEEP, GOATS
 *GET CALVES IN EARLY! OUR STATE GRADER STARTS AT 10:30 A.M.

FIELD REPS
 L. ROBERT FRAME, SR., PRESIDENT
 BUS (717) 442-4181 BUS (717) 768-8204
 HOME (610) 458-8518

IRWIN MARTIN (717) 336-7538
 KENNETH E. HERSHEY (717) 442-4874
 LEON HOOVER (717) 354-5835
 BUTCH BROWN (717) 626-5394

TRUCKING SERVICE AVAIL. LOCAL & LONG DISTANCE
 (RT. 30, 10 MILES EAST OF LANCASTER IN PARADISE, PA)

FLEA MARKET OCTOBER 9 & 10