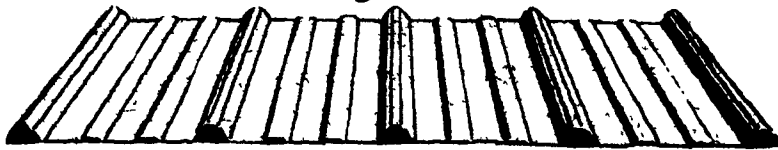


4 BUILDINGS AND SUPPLIES

Country Slicker



Centurydrain™ roofing and siding from Wheeling Corrugating: slick looking, tough, economical.

- High tensile galvanized steel for strength, durability.
- Drain channel and tight laps for snug, dry interiors.
- Wide selection of bright, baked-on contemporary colors.
- Slick looking, cost efficient, extra durable Centurydrain.

MARTIN'S ROOFING & SIDING

258 Walnut Bottom Rd.
Shippensburg, PA 17527
(717) 532-3460

Pole buildings, storage, pre-fabricated poultry and swine building packages featuring:

Wheeling Corrugating Company

Since 1890

Fast. Economical. Good Looking. Practical.

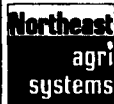


Wheeling painted, galvanized steel roofing and siding, it's not your grandfather's corrugated. Today, it's crisp profiles. Handsome colors. Unbeatable durability. We have it all. Right here.

celotex



Insulation/Finish Board
THE INSULATION & INTERIOR FINISH DESIGNED FOR AGRIBUSINESS/RURAL APPLICATIONS



Northeast Agri Systems, Inc.
Flyway Business Park
139A West Airport Road
Lititz, PA 17543
Ph (717) 569 2702

PLYCO

DOORS
WINDOWS

COMBO

Sliding door tracks and builders hardware

Authorized **Master Distributor Since 1982**

1-800-673-2580

★ ALLWOOD STRUCTURES ★

By Durabilt
POLE BUILDINGS



STANDARD BUILDINGS		LOFT BUILDINGS	
24x32x8	\$4,800	24x32x8	\$9,550
24x40x8	\$6,000	24x40x8	\$11,100
30x40x8	\$7,500	30x40x8	\$13,800
32x64x10	\$11,800	32x64x8	\$19,100
40x80x12	\$17,300		

ERECTED PRICES (includes slider and service door)
We specialize in: Horse Barns, Riding Arenas, Garages, Machine Sheds or Custom Built To Your Specifications

1-800-247-0241

Now Hiring Qualified Crews, Carpenter & Helpers. Visit our Website @ www.AllwoodStructures.com

STEEL BUILDINGS - INEXPENSIVE

We Build All Year
ESTIMATES FREE



Quality - Not Undersold
STEEL BUILDING COMPANIES, LTD. 717-564-6886

SPECIAL-24'x30'
\$4,900-LTD. OFFER
* Building Pkgs. Available

Everlast Roofing

Everlast II is galvanized heavier like old times; it is heat formed to prevent paint cracks; it is cut while hot to prevent early edge rust; Everlast paint is harder so it won't scratch as easy; won't bend or buckle as easy because of stronger design; laps are tighter and virtually invisible; nails/screws seal better because ribs fit tighter to fastener heads; zinc phosphate is used under paint which is much better than the chromate most competitors use. Crisp and attractive. Sharp colors. Excellent for houses and barns. Double dipped galvanized is proven best for animals. Standing seam is ideal for houses. Low prices, fast delivery

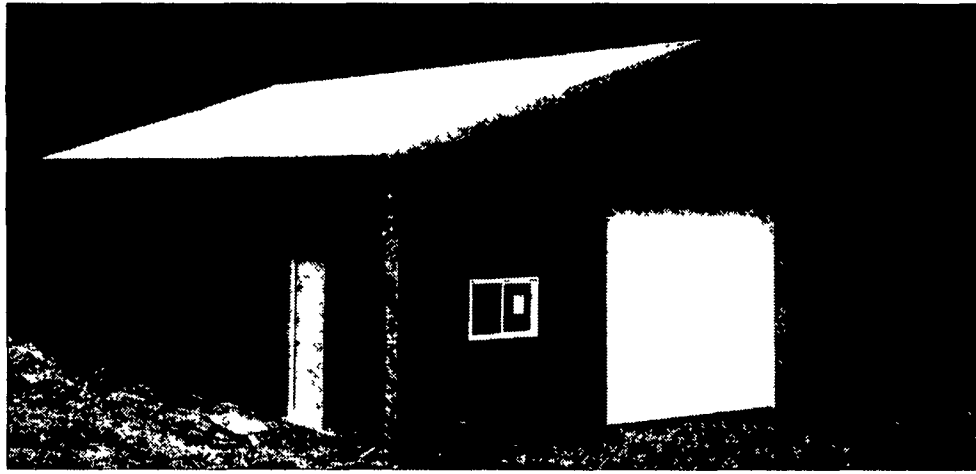
Everlast Roofing, Inc., 239 N. 5th Ave., Lebanon, PA 17046, Call toll free 1-888-339-0059 for info. & nearest dealer. (Mid-Atlantic, New England, Ohio)

Pioneer Pole Buildings, Inc.

Pottsville, PA

Toll Free 1-888-448-2505

LIMITED TIME SPECIALS!



30X32X10

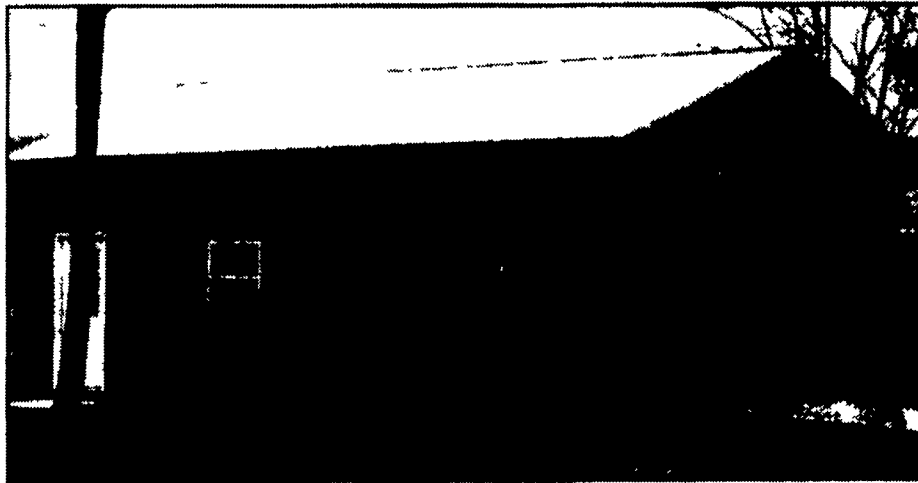
\$6,900
INSTALLED!!

1-10W10H Sliding Door or
1-9W8H Overhead Door
(Your Choice)

24X24X8

\$4,900
INSTALLED!!

1-16x7 Overhead Door



Both

Include: 3'x6'8" 6-Panel Steel Entry Door
25 year warranty Everlast painted steel (your choice of color on roof, sides, trim)
Steel is G-100 painted and heat roll-formed by Everlast Inc. the best known roofing made.
40# per sq. foot snow load on trusses. 2x6 top and bottom chord.
All materials and labor to construct the building.

Member PA Builders Association
Member National Frame Builders
Asso. Company Owned Crews

Top Quality Workmanship
Top Quality Materials
Quick Construction Date



Financing Available

Other Sizes Available

Call For Free Literature or See us at www.pionpole.com



GLENWOOD METALS LLC

CUSTOM CUT METAL ROOFING & SIDING

29 gauge - 15 colors
Painted, Galvanize & Galvalume

26 gauge commercial -
12 colors Painted & Galvalume

26 Ga. & 24 Ga.
Standing Seam Panels

.018 Mill Finish & White Aluminum

trims - screws - nails
to match colors

265 E. Meadow Valley Rd.,
Lititz, PA 17543
717-626-9674
800-582-9956
717-627-6892 - Fax