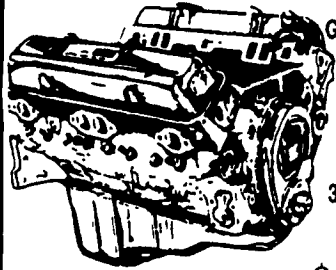


# JONES



**We want your business.**



**GM GOODWRENCH**  
350 V8 1973-85  
Part Number  
10067353  
New Engine - Not  
Rebuilt  
36 Month or 50,000  
Mile  
Warranty

New Engine - No Core Fee **\$1,220.00**

**WE'LL MATCH ANY COMPETITOR'S PRICE!**

**Goodwrench Transmissions Now In Stock! Call For Great Prices**

Call 394-0711 for prices on other New or Remanufactured Goodwrench Engines. 2.5 Liter thru 454 cid. Gas and Diesel

Chevrolet - Pontiac - Olds - Buick - Cadillac - GMC

## JONES GM PARTS CENTER

1335 Manheim Pike, Lancaster, PA 17604  
Easily Located on Rt. 72 Just off of Rts. 283 & 30  
Hours: Mon-Fri 7:30 a.m. - 8 p.m. Sat 7:30-3  
(717) 394-0711



**1993 Mack MS 250, 6 Speed, AC, Air Brakes, 22' Flat Bed with Trailer Brake Controller, Very Nice Truck - \$15,900 Neg. J & L Equipment - 814-893-5086**

**1996 DODGE RAM 2500 4x4, SLT "Cummins Diesel", AT, AC, PW, PL, Tilt, Cruise, Red, Local 1 Owner, 77,000 Miles, Clean... \$19,900**  
**1995 DODGE RAM 3500 4x4, Dually, SLT, "Cummins Diesel", AT, AC, PW, PL, Tilt, Cruise, Red & White, 78,000 Miles... \$19,900**  
**1994 FORD F-250 XLT, 4x4, 351, AT, AC, PW, PL, Tilt, Cruise, 106,000 Local 1 Owner Miles, Blue & Silver... \$10,500**  
**1992 FORD F-150 XLT 4x4, V8, 5-Spd., AC, PW, PL, Tilt, Cruise, 2-Ton Paint, New Clutch, Chrome Ralleys... \$8,500**  
**1989 CHEVY 3500 DUALY, 6.2L Diesel, Silverado, 5-Spd., AC, Tilt, Cruise, Maroon, Nice... \$10,500**  
**1988 FORD F-150 CUSTOM 2WD, 6 Cyl., 5-Spd., 102,000 Miles, Tan, Local Trade \$3,900**

### VANS

**1997 CHEVY VENTURE, V6, AT, AC, PW, PL, Tilt, Cruise, Green, 1 Owner, Tinted Glass, 51,000 Miles, 7-Pass... \$13,900**  
**1991 FORD E-150 CLUB WAGON, XLT, 8 Pass., 302/V8, AT, Dual AC, 2-Tone Paint, This One's Very Clean!! 79,000 Miles... \$8,900**

\* We Also Buy Heavy Truck, Light Truck, Diesels, Old And New!!

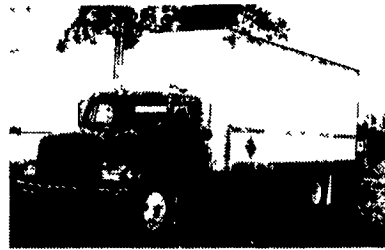


## 1988 - 1998 KEEN 30 YEARS

KATIE COURT  
HARRISBURG, PA  
17109

(717) 564-4511  
FAX (717) 564-4519

TRUCK RENTAL & LEASING



(1) 1991 IHC 4900 DT 466, 195 HP Fuller 6 Speed, IHC 22,000 Rears, Ratio-3 91, Tires 275/80R 22 5, A/C, P/S, AM/FM Stereo, 24' Morgan Dry Van, C/S Side Door, Rear Roll Up, Aluminum Ramp, GVW-32,000, "Well Maintained - Local Fleet" Asking \$13,500



1995 KENWORTH W900B, CAT 3406E 435 HP W/Jake Brake, Fuller RTL016610B, 10 Speed, DS-402, Ratio-3 70, 40,000 Lb Rears & Suspension, Sliding 5th Wheel, Air Ride Suspension, Dual Air Seats, Dual Stainless Air Cleaners, Full Gauges, Chrome, Shiny Wheels, Shiny Bumper, Tires 275/80R 22 5 (85%), "Lots of Goodies" 12 Miles on In-Frame Overhaul, "One Sharp K-Whopper"

(2) 1993 IHC 4900 DT-466, 195 HP Fuller 6 Speed, IHC 22,000 Rears, Ratio-3 91, Tires-275/80R 22 5, A/C, P/S, AM/FM Stereo, 24' Morgan Body Dry Van, C/S Side Door, Rear Roll Up, Aluminum Ramp, GVW-32,000, "Well Maintained Local Fleet"

### COMING SOON - 2 WEEKS

- 1995 Chevrolet Kodiak St. Truck, 24' Dry Van (CAT)
- 1994 IHC 8200 Day Cab, Low Miles (Detroit Diesel)
- 1990 Peterbilt Day Cab (Cummins)
- 1990 Peterbilt Cab & Chassis (Cummins)
- 1987 Mack MH613 C.O.E. (Mack)

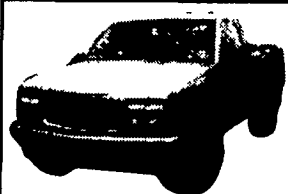


1994 VOLVO/GM WIA64T DETROIT DIESEL S60, 11 1, 365 HP, RTX-13710C, DS-402, Ratio-3 55 Tires 275/80R 22 5, Budd-Wheels, A/C, P/S, AM/FM Stereo Air Dryer, Air Ride Suspension Air Ride Cab, 24' Air Slide 5th Wheel, Full Fairings, Dual 150 Gal Tanks, Wheelbase 208" (Very Clean Truck)



# JONES QUALITY PRE-OWNED BEST BUYS!

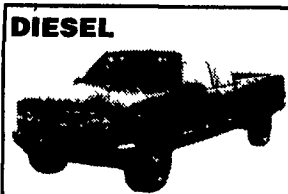
**PONTIAC • HONDA • GMC TRUCK • ACURA • USED CAR CENTER**  
**1335 Manheim Pike • Lancaster, PA**  
**717 394-0711**  
**QUALITY PRE-OWNED BEST BUYS!**  
 Prices based on straight sale. Tax and tags extra. Trades accepted at actual cash value. Must present this ad at time of purchase for sale price.



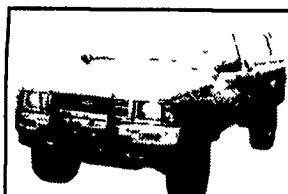
**'96 GMC K15 4X4**  
AT, SLE, 350, Air  
#8726 Was \$19,500  
SALE **\$17,700**



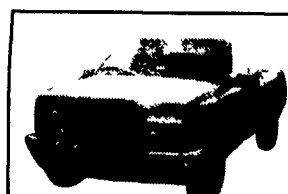
**'94 GMC K15 XCAB 4x4**  
AT, AC, 350, SLE,  
#8554, Was \$20,000  
SALE **\$18,850**



**'96 CHEV K25 XCAB 4x4**  
AT, 6.5 Turbo, AC, Silverado,  
45K Miles, #8725, Was \$24,400  
SALE **\$21,100**



**'92 TOYOTA X CAB 4x4**  
AT, V6, Air, #8811, Was \$12,700  
SALE **\$10,500**



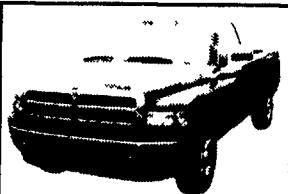
**'96 GMC K15 XCAB 4X4**  
AT, AC, SLE, 4 3 Vortec,  
#8744, Was \$19,800  
SALE **\$17,700**



**'98 GMC K15 X CAB 4x4**  
AT, AC, V8, SLE, 12K Miles,  
#8814, Was \$25,500  
SALE **\$23,700**



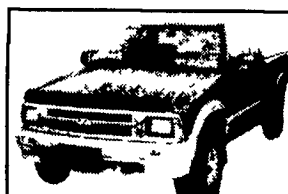
**'93 GMC SAFARI 4x4**  
AWD, AT, AC, V6, 8 Pass, 250K,  
Runs Great, #8816, Was \$7,000  
SALE **\$3,800**



**'96 DODGE 150 PICKUP**  
AT, AC, SLT, 5.9  
#8780, Was \$16,500  
SALE **\$13,900**



**'86 GMC K15 4x4**  
AT, AC, V8, High Sierra,  
#8822, Was \$8,000  
SALE **\$6,850**



**'94 CHEV S10 XCAB 4X4**  
AT, AC, V6, LS,  
#8807, Was \$13,800  
SALE **\$11,700**



**'99 DODGE DAKOTA XCAB 4X4**  
AT, SLT, AC, V6, 7K Miles,  
#8764, Was \$23,800  
SALE **\$21,500**



**'97 GMC K15 4X4**  
AT, AC, 350, SLE,  
#8757, Was \$20,900  
SALE **\$19,200**



**'96 GMC K15 X CAB 4X4**  
AT, AC, SLE, 3rd Door, 30K,  
#8809, Was \$21,900  
SALE **\$19,900**



**'91 NISSAN PATHFINDER 4X4**  
AT, AC, V6, #8760,  
Was \$9,900  
SALE **\$8,100**



**'97 HONDA CRV 4X4**  
AT, AC, LX,  
#8698, Was \$20,500  
SALE **\$18,500**



**'95 GMC SUBURBAN 4X4**  
LT, AT, AC, 350,  
#8796, Was \$24,00  
SALE **\$21,800**



**'93 TOYOTA X-CAB**  
AT, 4 Cyl.  
#8746 Was \$8,900  
SALE **\$7,600**



**'95 LAND ROVER DISCOVERY 4X4**  
AT, V8, AC, 45K Miles,  
#8790, Was \$21,800  
SALE **\$19,500**



**'97 DODGE XCAB 4X4**  
5 Spd., AC, ST, V8,  
#8802, Was \$21,500  
SALE **\$19,500**



**'95 FORD EXPLORER 4x4 XLT**  
AT, AC, V6, Dark Blue, #8810  
Was \$14,900  
SALE **\$13,500**