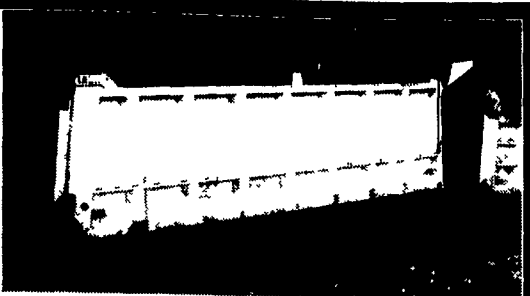


35

TRUCKS AND TRAILERS

1980 Freightliner day cab w/wetline, 1972, 42' flat-bed spread axle, 40' flat-bed tandem, 1981. 717-694-3821 after 5pm



(4) Aluminum Dump Bodies
(3) 17-1/2' (1) 15'

Various manufacturers, good condition
\$2,500 ea.

MARTIN LIMESTONE, INC.

390 Quarry Road
New Holland, PA 17557
Jim Conley
(717) 354-1394

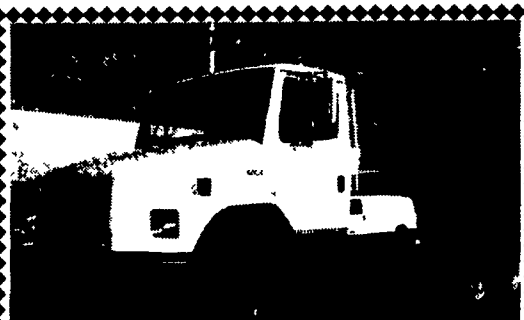
'72 KW W-900 w/ Aerodyne double bunk, 425 cot ATAC, 15 speed over & air ride, 270"WB, good solid classic KW w/ aluminum wheels, excel. tires, \$12,500 obo. 717-464-2874

1983 GMC Brigadier S/A tractor, 350 Detroit, good cond, needs some TLC on cab, \$2800. 717-776-7725

'88 Ford F350 dsl, 12' flat-bed dump, Western snowplow, good cond, \$8,900. 410-879-1981.

'94 Ford XL F150 super cab, 300 EFI, 5 spd, PS, PB, air, AM-FM, dual tanks, dark green w/ matching cap, 81,000 one owner miles, excellent condition, \$7,950. 717-733-2873

1974 F700 16' grain dump very good cond. \$3,600 OBO 610-588-1444.

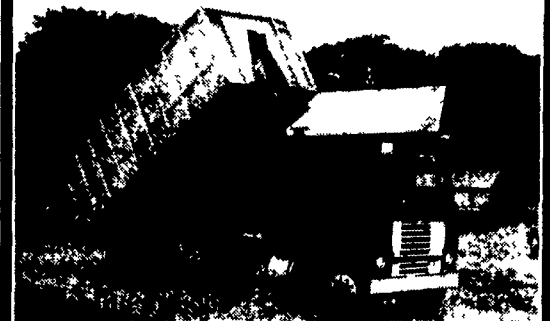


1999 FREIGHTLINER FL80

3126 Cat 300 HP, RTF-8908LL Trans, 46,000 Lb. Rears on Chalmers 16,000 Lb. Front. 4.56 Ratio, Wheel Lock, Double Frame, 204" WB, A/C, Air Ride Cab, Factory All Wheel Drive Package, 300 Original Miles!

717-354-3199 New Holland, PA

FOR SALE - 1969 Ford 9000



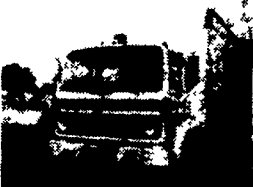
Cummins 903 Engine, 13 Speed Trans., 20' Alum. Grain Body, Equipped with brand new barn door type tailgate for hauling silage, also has grain gate.

Call 610-837-1760
Ask for Mark

LEED TRUCK CENTER

402 South Chiques Rd.
Salunga Exit, Route 283

717-898-1200



84 MACK MS200

6 Cyl Turbo, 5 Spd., P/S, Air/Hyd Brakes, 22' Van Body, Insp., Clean
Priced To Sell



(2) **88 GRUMMAN Alum 14'** Step Vans, 350 GM V8, 4 Spd., P/S, P/B, 10,000 GVW, Dual Wheel, New Insp., Very Clean **Call For Details**



95 IHC 4900

DT 466, 5 Spd., P/S, AC, No CDL Needed, 25,500 GVW, 18' C&C, Only 128,000 Miles
Call For Details

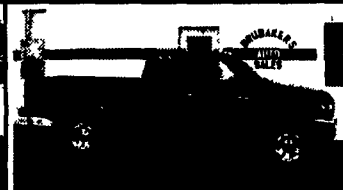


84 FORD F700

370 V8, 5 & 2 Spd., PS, No CDL Needed, 19,700 GVW, Pritie Hook, Clean
Priced To Sell



98 FORD WINDSTAR GL, 7/Pass, Green, 3.8 V-6, AT, AM-FM Cass, AC, PW, PL, CC, Tilt, Airbags, 57,905 Mi. **\$12,900**



97 TOYOTA TACOMA LX EXT-CAB 4x4, Black, 4 Cyl, 5 Sp, AM-FM Cass, AC, Airbag, 23,238 Mi **\$17,900**



97 GMC 1500 SIERRA SLE 4x4 Z-71, Ext-Cab, Black, 350 V-8, AT, AC, PW, PL, CC, Tilt, AM/FM/Cass/CD, Pwr-Seat, 61,000 Mi **\$20,900**



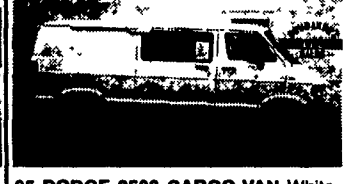
97 CHEVY ASTRO 8/Pass, Blue, 4 3 V-6, AT, AM-FM Cass, AC, PW, PL, CC, Tilt, Airbags, 90,040 Mi **\$10,800**



96 FORD BRONCO XLT, 2dr, 4x4, Green, 351 V-8, AT, AM-FM Cass, AC, PW, PL, CC, Tilt, Airbag, 77,640 Mi..... **\$13,800**



96 FORD F-350 XL 4x4 White, 351 V-8, AT, AM-FM ST, AC, 43,685 Mi. **\$17,500**



95 DODGE 2500 CARGO-VAN White, 318 V-8, AT, AM-FM ST, AC, Airbag, 88,605 Mi..... **\$7,800**



94 FORD F-250 XLT 4x4 Ext-Cab, Green, 351 V-8, AT, AM-FM Cass, AC, PW, PL, CC, Tilt, 121,055 Mi **\$12,800**

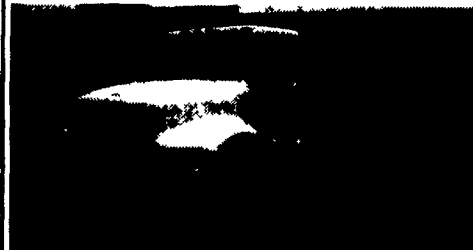
AL HAMILTON MANAGEMENT COMPANY

P.O. Box 157 • 55 Doe Run Road • Manheim, PA 17545
Phone: 717-665-7145 • Fax 717-665-2137

★★★★
"CLEANEST TRUCKS AROUND"
★★★★



1992 Ford LN8000
C&C 7.8 L Diesel, 210 HP, 6 Spd. Trans., Custom Int., 234" WB, 168" CA, 33,000 GVW
\$19,500



1993 Int. 4900
C&C DT 466, 210 HP, 5 Sp. Trans, 2 Sp. Rear, 236 WB, 168" CA, 35,000 GVW
\$20,500



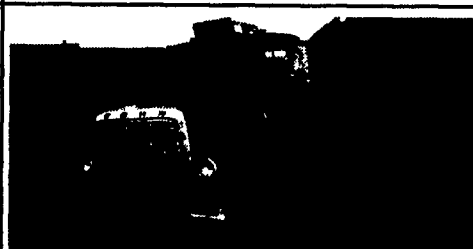
1991 Ford LN9000
w/New 10' Dump, L-10 Cummins, 9 Spd Trans., 34,700 GVW
\$25,500



1980 Ford LN8000 C&C
3208 Cat, 210 HP, 5 Spd. Trans, 2 Spd. Rear, PS, Air Brakes, WB 204", CA 138"
\$11,500



1988 Ford LN8000 Dump
7.8L, 240 HP, 7 Spd. Trans, 39,000 GVW, Custom Int., Excel. Cond., New 10' Dump
\$20,500



1983 Ford LN7000 C&C
3208 Cat, 210 HP, 5 Spd. Trans, 2 Sp. Rear, Hyd. Brakes, WB 220", CA 156", 24,000 GVW
\$10,500



1986 Ford LN8000 C&C
3208 Cat, 210 HP, 5 Spd. Trans, 2 Sp. Rear, Custom Cab, WB 240", CA 170"
\$14,500



1975 Ford LT8000
15' Dump, 3208T, 250HP, 8LL Trans, 52,000 GVW, Pintle Hook, Air Hook Up, Nice Older Truck
\$12,500



1994 Ford LN8000 C&C
8.3 Cummins, 6 Spd. Trans, Custom Cab, AC, WB 246", CA 180", 33,000 GVW
\$21,500



1991 Ford LNT 8000 C&C
7.8L Diesel, 240 HP, 10 Spd. Trans, Custom Int., A/C, WB 264", CA 192", 56,000 GVW
\$26,500



1993 Int. 4900 C&C
DT 466, 210HP, 5 Spd. Trans., 2-Spd. Rear, 218 W.B., 152 C.A., 35,000 GVW
\$20,500