

FOR SALE



94 DODGE RAM 2500 4X4
Cummins Turbo Diesel, AT, A/C, PS, PL, C, 119,000 Miles, DK Green
***15,800**



90 DODGE RAM 250 4X4
Cummins Turbo Diesel, AT, A/C, Most Options, Long Bed, 150,000 Miles, Black & Red
***9,850**



95 DODGE RAM 2500 4X4
Magnum V8, Long Bed, AT, A/C, Most Options, 104,477 Miles
***11,800**



95 DODGE RAM 2500 SLT 4X4
Cummins Turbo Diesel, 5 Spd., A/C, Most Options, Long Bed, 173,379 Miles
***14,200**

SCHAEFFERSTOWN AUTO & TRUCK SALES
Rt. 501, 1 1/2 miles South of Schaefferstown
717-949-2812

DIESEL DROP INS
6 9-7 3-3208-CAT
MARINE ENGINES

Engine TRANSMISSION WAREHOUSE, Inc.

REMANUFACTURED
ENGINES AND
TRANSMISSIONS

LOCAL
717-896-2481



2857 Peters Mtn Rd.
Halifax, PA 17032

FAX:
717-896-2483

1-800-507-4359

DON'T FUSS! CALL US!

100	00	00	00	00
88-93 2 8 FI \$1049	87-91 4 3 Roller \$1049	5% Discount for cash or check	86-90 2 9 \$1499	81-86 302 TK \$1049
GM	GM		Ford	Ford MI.

NATIONWIDE
AND CANADA

CALL US

FOR YOUR INSTALLATION NEEDS

BEST WARRANTY IN THE INDUSTRY

WARRANTY 36 MONTHS 100,000 MILES

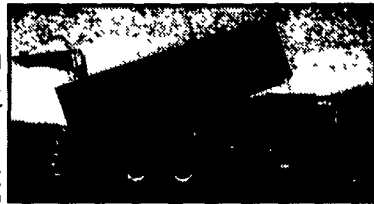
**FREE TOWING WITHIN 25 MILE RADIUS
W/ENG. OR TRANS.
INSTALLATION**



★ USA ★ BODY, INC.

AG BODY & TRUCK HEADQUARTERS

Looking for more than a "silage" body?
Need strength, durability and convenience year 'round?
Consider the USA ALLStar!
Maximum Strength and Durability make the ALLStar more Versatile than conventional "silage" bodies. Haul a variety of ag needs from grain and feed ingredients to sand and fertilizer with no chains or extra bracing ever. Unloading is FAST and EASY with our clean, tapered body design and SAFE, STABLE Omaha Standard under-body hoists installed properly to provide maximum dump angle and fast cycle time. Have Complete Control from the Cab with the exclusive Hydralock Gate Locking Assembly - locks automatically when gate is closed - no turn buckles or bolts necessary to keep load secure!
More for Your Money with the ALLStar... so much more performance, durability and convenience than traditional "silage" bodies and still COMPETITIVELY PRICED!



USED TRUCKS - IN STOCK!
86 IHC 300 Cummins, 7 spd.
87 Mack Superliner 300 6 spd., Dynatard, 12-38
88 Mack Superliner, 300 6 spd., Dynatard, 12-38
88 Freightner, 350 Cummins, Jake, AC, 8LL Trans, 2 & 40 on Hendrickson
Several R Model Macks 83-88, most w/350, 9 spd, Dynatard, some w/AC, 12 & 38 on Camelback

- USA Ag Bodies
- USA Slide-In Liquid Manure Tanks
- Used Trucks
- Omaha Standard Hoists
- 'Unibody' Grain Bodies
- Lagoon Pumps by Dry Hill

**Pickup & Delivery Available - Competitive Prices
More Standard Features
Exclusive Hydralock Gate - Quick, Dependable Service**

For details and prices on current inventory
Call toll free 1 (888) 278-2639
or check out our web site at www.usabody.com
Cortland Street, DeRuyter, New York 13052

Need T44E Engine for '97 IH 4700

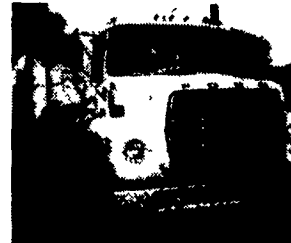
973/347-1101

Ask For Jim

TRUCKERS
27' HD RATCHETS.....\$13.95
WINCH STRAPS.....\$12.95
RUBBER T. STRAPS.....54¢
REFLEXITE RED/WHITE TAPE.....82¢/Ft.
TIRONIE TARPS
(800) 874-2928 • FAX: (570) 584-3127



New Flatbeds Available
Sizes currently available are 12', 14', 20', 22' and 24'. Racks are also available



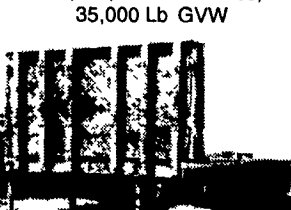
80 Ford LN900 Water Truck
477 V-8, 5 Spd, 2 Spd Rear, 2400 Gal Heil Stainless Water Tank, PS, AB, 10 00x20 Tires, 35,000 Lb GVW



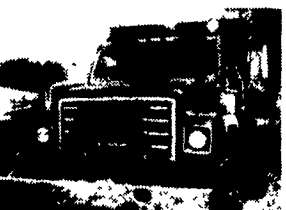
12' Reefer Body, under body refrigeration unit, Uses 220 electric Has damage



94 IH Model 4900
DT466 engine, 5 spd., single rear, air brakes, A/C, 32,900 GVW, double frame, 11x22.5 Budds.



9 40'-45' 1970's & Newer Steel Flatbed Trailers
some have sliding tandems, all in good condition
\$2,500/Ea. and Up

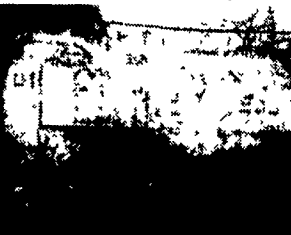


1980 IH Model 1824
446 V8, 5-spd., single rear, 4x4, w/13' angle snow plow, 10' dump body, air brakes, 10.00x20 tires, 30,200 GVW, only 20,963 miles!

254" W.B. 19' NEW Lumber Body
w/Ratchet Tie-Downs w/Dumping Hoist



1948 International
KB7 Cab & Chassis, 50,000 miles, 269 gas engine, 4 spd. trans., hydraulic brakes, excellent condition, been in storage over 30 years.



1500 gallon Sludge Tank

4 I-Beams, 49' Long, 28" High
w/12-1/2" Web



Clark Crane, 14 Ton Capacity, 4-53 Detroit, 60' boom, 14.00x24 tires, runs good serial #720



1993 Toyota Pickup
4 Cyl., 5 Spd. Trans., AM-FM Radio, A/C, Excellent Condition, High Mileage



1994 Isuzu Model NRR
6 Cylinder, Auto, 7400 Aluminum Tank with Pump, 13,250 GVW, 17,438 Miles

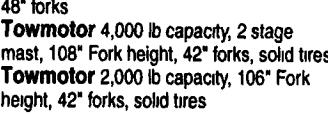


Aluminum Tanker/Trailers
7500 gal. and up

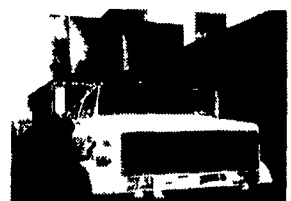
Forklifts For Sale



Hyster 2,000 lb capacity, 3 wheeler, propane gas, solid tires, 92" Fork height, 48" forks



Towmotor 4,000 lb capacity, 2 stage mast, 108" Fork height, 42" forks, solid tires
Towmotor 2,000 lb capacity, 106" Fork height, 42" forks, solid tires



1982 GMC Topkick
3208 Cat, 5 Spd., 2 Spd. Rear, Hydraulic Brakes, PS, 27,500 GVW, 10.00x20 Tires, 16' Long High-Lift Flat Body

Ingersoll Rand Air Compressor, Type 30, 15 HP 3 Phase



89 GMC Sierra SLE
Chattanooga Choo Choo Custom, 4WD, 16" Aluminum Wheels, Running Board, 132,007 Miles



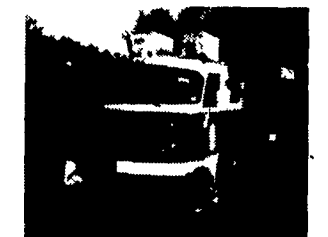
W7 Case Loader., 15.5x25 tires, runs good serial #9900486



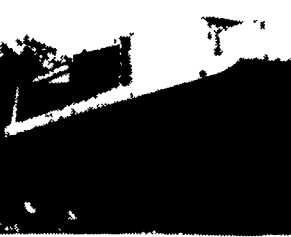
83 Eagle Wagon Ltd.
4 WD - 115,000 Miles



Michigan Loader Model L30
Quick Coupler, Comes With 1 Yard Bucket and 60" Forks, Runs Excellent



1959 American LaFrance Pumper, Continental Gas Engine, 5spd., Looks & Runs Good



1994 DanCo Aluminum Rollback, 18' Long, Dual Controls, Towbar, Excellent Condition

11.1 60 series Detroit engines
12.7 60 series Detroit engines
8.2 non-turbo Detroit engines

Wm. Cohen & Sons, Thorndale, PA

(610) 269-1298 Call between 7 am - 4:30 pm

Hundreds of Used Truck Tires For Sale

Sizes from 30" to 44"
1979 Crane Cement Mixer
10 Yd. Rex Mixer, 230 Cummins, 8 Spd. Trans., 44,000 Lb. Rears
Asking \$8,500

Used Aluminum Bodies For Sale

Aluminum Loading Ramps
24" x 60" and other sizes available
Vertical Hoists
1/2 ton cap., 440 volt, single and three phase.
Asking \$390/ea.

Used Metal Bodies For Sale

220' x 100'
Toledo Scale
1,000-lb. Capacity
Oil Heater
250,000 BTU
New Generator
2500 Watt Gas Powered

Used Van Trailers - For Sale or Rent