

**Central Carlot
Beef Report**
Des Moines, IA
Wed Sep 8, 1999

USDA Market News
USDA NATIONAL CARLOT BEEF REPORT (includes major production areas in the Midwest and TX) as of 3:00 PM COW & BULL CARCASS FOB OMAHA Loads Reported. Compared to Tuesday's 3:00 P.M. report: Cow and bull carcasses not established.

UT,brk 2-4 450#/up unq UT,lng 1-3 400#/up unq Cutter 1-2 350#/up unq Bulls YG 1 500#/up unq
COW & BULL CARCASS CAF WEST COAST Loads Reported. Compared to last week:

Market for Week Ended: September 3, 1999 Lds Price Range UT,brk 2-4 450#/up UT,lng 1-3 400#/up 66.00 Cutter 1-2 350#/up 66.00 Bulls YG 1 500#/up

BONELESS PROCESSING BEEF/BEEF TRIMMINGS 239.0 Loads Reported. Lean boneless beef in Omaha 3.00 to 4.50 lower, Texas 1.50 to 5.00 lower; 85% 3.50 to 4.00 lower; 75% 4.00 to 7.00 lower; 65% weak to 3.00 lower. Demand light to moderate for moderate to heavy offerings. Beef trimmings lower on fairly good demand and heavy offerings. FOB OMAHA BASIS: Chm Ln Lds Price Range Wtag 90% fr 26 88.0 - 91.5 89.13 90% fz unq 85% fr 9 82.5 - 83.0 82.83 85% fz 75% fr 7 68.0 - 72.0 70.29 75% fz 65% fr 10 58.0 - 60.5 59.45 65% fz 50% fr 146 34.00 - 38.00 35.56 50% fz 2 42.00 42.00 50% bx unq Bull 92-94 unq

FOB EAST TEXAS AND OKLAHOMA: Chm Ln Lds Price Range Wtag 90% fr 22 90.0 90.00 90% fz 2 95.0 95.00 85% fr 85% fz 75% fr 75% fz 65% fr 65% fz

CAF NORTHEAST AREAS: Chm Ln Lds Price Range Wtag 90% fr 15 92.0 - 93.0 92.53 90% fz 85% fr unq 85% fz 75% fr 75% fz 65% fr 65% fz

CAF WEST COAST BASIS Market for Week Ended: 9/03/99 Chm Ln Lds Price Range Wtag 90% fr 94.00 - 96.00 95.18 90% fz unq 85% fr 87.00 - 91.50 90.08 85% fz unq 75% fr unq 75% fz unq 65% fr 61.00 - 64.50 63.52 65% fz 50% fr 40.00 - 42.50 41.85 50% fz unq

ABCDE after quotes represents days since last actual market test. Quotes are dropped after 5 days of no test or before if they no longer reflect current market conditions.

**Frederick
Livestock
Auction**

Frederick, Md.
September 6, 1999

Report Supplied By Auction
SLAUGHTER COWS: 109 HEAD, STEADY TO .50 LOWER. UTILITY 36.00-39.25; HIGH DRESSING 39.75-41.50; CANNERS 31.00-35.50; SHELLY 31.00 AND DOWN.

BULLS: 3 HEAD. YG#1 1945 LBS. AT 43.50; 1 980 LB. AT 46.50.
FED STEERS: SELECT TO LOW CHOICE HOLSTEINS 1757-1700 LBS. 46.00-48.75.

HEIFERS: 1 CHOICE HOLSTEIN 1330 LBS. AT 47.25; DAIRY CULLS 1000-1100 LBS. 40.00-44.50.

VEAL CALVES: 221 HEAD. CULLS 85-110 LBS. 23.00-29.00, 60-85 LBS. 15.00-22.00.

FARM CALVES: HOLSTEIN BULLS, STEADY PRICES. #1 95-120 LBS. 95.00-115.00, 90 LBS. 50.00-70.00, 85 LBS. 40.00-60.00; HOLSTEIN HEIFERS #1 95-120 LBS. 230.00-300.00, 80-90 LBS. 170.00-250.00; #2 70-85 LBS. 50.00-135.00; BEEF X BULLS 67.00-110.00; BEEF X HEIFERS TO 110.00.

BUTCHER HOGS: 6 HEAD. YG#2&3G 280-285 LBS. 34.50-35.50. BOARS: 1 765 LB. AT 4.00.

STOCK CATTLE: STEERS, NONE. HEIFERS: HOLSTEINS 650 LBS. AT 71.00; HOLSTEINS X 175 LBS. 61.00-75.00.

LAMBS: 60-75 LBS. 70.00-71.00. GOATS: 6 HEAD. LARGE NANNY 54.00; MEDIUM BILLIES 43.00-48.00; SMALL 18.00.

**New Holland
Sales Stables**

Report Supplied by USDA
Monday, September 6, 1999

	Calves	Sheep	Goats
Today	181	719	1319
Last Week	236	1697	1343
Last Year	186	518	880

CALVES: COMPARED TO THURS.'S AUCTION, VEAL CALVES AND SLAUGHTER CALVES MOSTLY STEADY. SMALL SUPPLY HOLSTEIN

BULLS AND HEIFERS FIRM, INSTANCES 10.00 HIGHER.

VEALERS: CHOICE 200-350 LBS. 85.00-115.00. GOOD AND CHOICE 80-120 LBS. 18.00-28.00. STANDARD AND LOW GOOD 70-90 LBS. 11.00-20.00.

SLAUGHTER CALVES: GOOD AND CHOICE 300-500 LBS. 65.00-80.00. STANDARD 280-550 LBS. 50.00-65.00. RETURNED TO FARM: HOLSTEIN BULLS 95-125 LBS. 70.00-105.00. PLAINER BULLS 80-115 LBS. 45.00-70.00. HOLSTEIN HEIFERS FEW 80-115 LBS. 250.00-300.00.

SHEEP: COMPARED TO THURS., SLAUGHTER LAMBS AND SLAUGHTER EWES STEADY TO 5.00 HIGHER.

SLAUGHTER LAMBS: CHOICE AND PRIME 2-3 40-60 LBS. 95.00-110.00; 60-100 LBS. 80.00-95.00; 100-140 LBS. 70.00-80.00. GOOD AND CHOICE 1-3 40-60 LBS. 80.00-90.00; 60-100 LBS. 75.00-80.00.

SLAUGHTER EWES: GOOD AND CHOICE YEARLINGS AND 2 YEAR-OLDS 40.00-65.00. UTILITY AND GOOD 1-3 30.00-45.00.

GOATS: BY THE HEAD, LARGE BILLIES 100.00-125.00, COUPLE 130.00-150.00, MEDIUM 75.00-100.00; CHOICE AND PRIME MUTTON 60.00-90.00; LARGE NANNIES 50.00-70.00, MEDIUM 35.00-50.00; CHOICE AND PRIME YEARLINGS 60.00-75.00; CHOICE AND PRIME KIDS 40.00-60.00, GOOD 20.00-40.00.

**Grantsville
Livestock**

Grantsville, Maryland
Report Supplied by Auction
Saturday, September 4, 1999

STOCK BULLS AND STEERS 200-500 LBS. 50.00-96.00.

STOCK HEIFERS 45.00-84.00. SLAUGHTER STEERS GOOD TO CHOICE, UP TO 61.50; MEDIUM TO GOOD 45.00-58.00.

HOLSTEIN STEERS GOOD 46.50-54.00, LIGHT 40.00-48.00.

SLAUGHTER HEIFERS GOOD TO

CHOICE 60.00-64.00, MEDIUM TO GOOD 50.00-58.50.

BULLS: HEAVY 35.00-46.00, LIGHT 35.00-50.00.

COWS: UTILITY HOLSTEINS 31.00-39.00, CANNERS 25.00-33.00, CULLS 22.00 AND DOWN.

BOB CALVES 30.00 AND DOWN. HOLSTEIN BULL CALVES RETURN TO FARM: 90-120 LBS. UP TO 90.00. HOLSTEIN HEIFER CALVES RETURN TO FARM UP TO 205.00.

BEEF X CALVES RETURN TO FARM, UP TO 85.00.

HOGS: TOP QUALITY UP TO 39.00, HEAVY UP TO 36.00, LIGHT 20.00-32.00, FEEDER PIGS BY THE HEAD UP TO 34.00.

MALE HOGS: 3.00-15.00.

LAMBS: 70-85 LBS. UP TO 84.00, 85-125 LBS. UP TO 79.00, 30-60 LBS. UP TO 85.00, CULLS UP TO 65.00.

SHEEP: UP TO 50.00.

GOATS: ALL BY THE HEAD, LARGE 40.00-155.00; MEDIUM 20.00-50.00; SMALL 7.00-39.00.

**Morrison Cove
Livestock**

Martinsburg, Pa.
September 6, 1999

Report Supplied by Auction

CATTLE: 110. STEERS CHOICE 63.75-67.75; GOOD 60.00-62.75.

HEIFERS: CHOICE 61.50-66.50; GOOD 56.00-60.00.

COWS: UTILITY & COMMERCIAL 34.50-40.00, CANNER AND LOW CUTTER 18.00-33.00.

BULLOCKS: GOOD & CHOICE 44.00-51.00.

BULLS: YIELD GRADE NO. 1 40.00-46.00.

FEEDER CATTLE: STEERS 52.00-75.00; BULLS 45.00-68.00; HEIFERS 48.00-65.00.

CALVES: 149. PRIME, NO MKT. TEST; CHOICE 75.00-88.00; GOOD 55.00-65.00; STANDARD 15.00-35.00; HOLSTEIN BULLS 90-130 LBS. 45.00-110.00; HOLSTEIN HEIFERS 90-130 LBS. 85.00-260.00.

HOGS: 176. US NO. 1-2 34.50-36.00; US NO. 1-3 33.00-34.00.

SOWS: US NO. 1-3 18.00-28.00.

BOARS: 5.00-16.00.

FEEDER PIGS: 2 HEAD. US#1&3 20-50 LBS. NO MARKET TEST.

SHEEP: 19. CHOICE LAMBS 80.00-85.00, GOOD LAMBS 75.00-80.00, SLAUGHTER EWES 22.00-35.00.

GOATS: 18.00-80.00.

**New Holland
Dairy**

New Holland Sales Stables
New Holland, Pa.

Wednesday, Sept. 8, 1999

Report Supplied By Auction

153 DAIRY COWS, 148 HEIFERS, 6 BULLS. MARKET STEADY, NOT AS MANY HIGH QUALITY FRESH COWS OFFERED.

LOCAL FRESH COWS 1000.00-1375.00.

FRESH HEIFERS 950.00-1500.00, FEW BETTER 1550.00-1700.00.

LOCAL SPRINGERS 1000.00-1450.00, FEW LESS DESIRABLE 700.00-900.00.

UPSTATE LOADS FRESH 1200.00-1700.00.

BETTER FRESH COWS: 1650.00-1900.00.

LOCAL JERSEY HERD DISPERSAL, 54 HEAD, BETTER YOUNG COWS SOLD 900.00-1360.00, SEVERAL OLDER MID LACTATION COWS 300.00-700.00.

SPRINGING HEIFERS LARGE 1200.00-1400.00, SMALL 785.00-1100.00.

SHORTBRED HEIFERS: 785.00-1100.00, FEW BETTER 1200.00-1300.00.

REGISTERED HEIFERS: 975.00-1375.00.

OPEN BREEDING AGE HEIFERS: 800.00-960.00.

SMALL OPEN HEIFERS 600.00-700.00, FEW SMALLER 310.00-550.00.

BULLS: 310.00-835.00, 1 REG. 900.00.

FREE COMMODITY MARKET NEWSLETTER

Whether your trade interests are grains or gold, Lehigh Valley Futures, Inc. has the knowledge and expertise to assist you in these markets. For a copy of our newsletter and/or a free trading kit, please contact:

Lehigh Valley Futures, Inc.

5000 Tilghman Street Suite 249
Allentown, PA 18104

1-800-543-8939 or 1-610-366-7979 Fax 1-610-366-9842
lvfuture@microserve.net

The risk of loss in trading futures and options on futures can be substantial. Futures and options trading may not be suitable for everyone. You should carefully consider the risks in light of your financial condition in deciding whether to trade.

**DURABED®
COW MATTRESS**

80 oz.
Waterproof
The Only One Of Its Kind



- ✓ The Heaviest
- ✓ The Driest
- ✓ The Most Effective
- ✓ The Strongest
- ✓ The BEST

Why Buy Anything Else?

North Brook Farms
Toll Free: 877-624-2638
Call for Dealer nearest you.



PENNSYLVANIA DEALERS:

- Martin's Farm Supply
Greencastle
717-597-4283
- Martin Construction Co.
Kutztown
610-683-6120
- Ammon Fisher
Ronks
717-687-0349
- Farmer Boy
Myerstown
717-866-7565

HEAVY DUTY FIBERGLASS GATES



Gate Prices
8' - \$63
10' - \$70
12' - \$78
14' - \$97

Contact Your Nearest Dealer:

- Paul B. Zimmerman, Inc - 50 Woodcorner Rd., Ephrata, PA 717-738-7350
- John A. Zook - Rt 30, Gap, PA
- Zook's Farm Store - Honey Brook, PA
- Gideon K. King - Elam Road, Kinzer, PA
- D&J Farm Store - Hess Road, Quarryville, PA
- Zimmerman Farm Service - Bethel, PA 717-933-4114
- Huber's Animal Health - Myerstown, PA 717-866-2246
- Umbergers of Fontana - Rt 322, Annville, PA 717-867-5161
- Pleasant Valley Store, Sproul Rd., Kirkwood, PA
- David S. King - Railroad St., Myerstown, PA 717-866-6556
- Rovendale Ag - Watsontown, PA 570-538-9564

WATERLESS TOILETS

"SUN-MAR" Composting Toilets

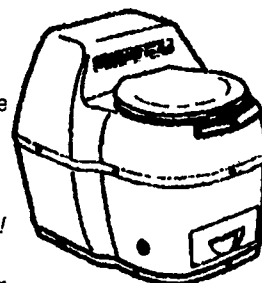
Several models available including non-electric.
• NO Septic System
• NO Chemicals

Save the Environment!
Recycle Back to Nature!

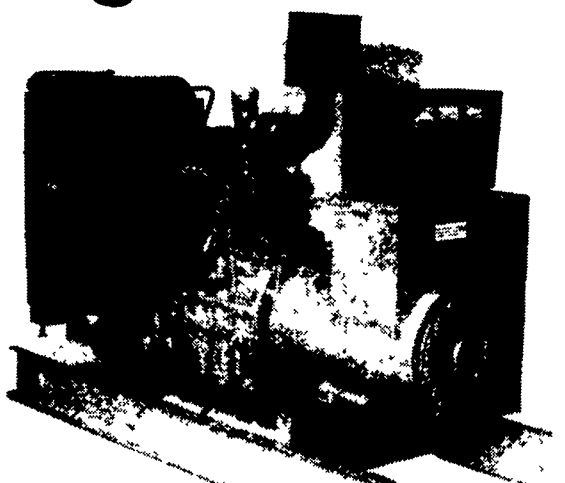
FREE:
12 Page Color Catalog

We Perform Septic Inspections & Certifications

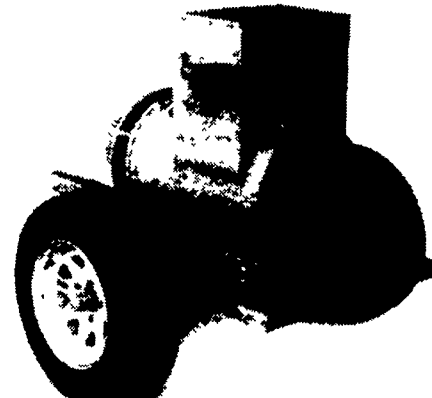
ECO-TECH Call Today 1-800-879-0973



Agricultural Generators



Automatic
L.P. Gas, Diesel,
Natural Gas Generators
5 to 2,000 KW



P.T.O.
Generators
25 to 135 KW Units
In Stock!

Service - Rental - New - Used

PENN POWER SYSTEMS
Power Generation Systems Specialists

330 Fonderwhite Road, Lebanon, PA 17042

Call Leonard Martin 717-273-4544
Fax 717-273-5186