

# GOOD YEAR THE RIGHT TIRES FOR THE WAY YOU FARM

## ULTRATORQUE RADIAL



Cuts Through Mud, Dirt, And All Kinds Of Soil

**\$589.00**  
380R5R28 TL  
Replace 149R28  
No Trade Needed  
Other Sizes Available

- Open center mud-channel for cleanability
- Centerline riding pads for smooth roading and excellent wear
- Conventional long bar design offers premium traction

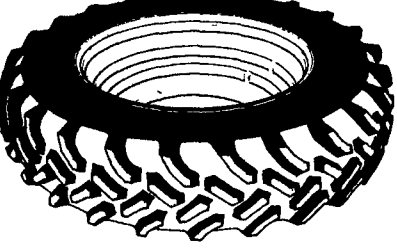
## DURATORQUE



Economy Bias-Ply  
**\$194.00**  
Priced With Long/ Long Bar  
13.6x28 Tubeless  
6 Ply TT

- Excellent roadability provided by over lapping lugs in the center
- Traction in a wide range of sizes due to the long bar design
- Long wear and durability from the braced lug design
- Easy lug cleanability

## DT710 RADIAL

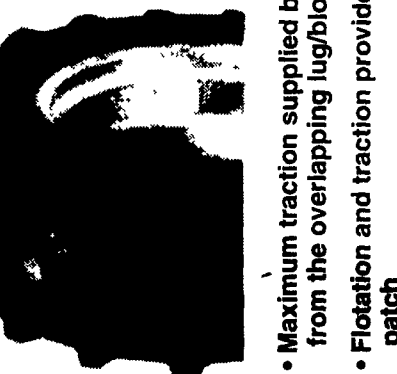


As Smooth On The Road  
As It Is Powerful In The Field

**\$499.00**  
184R38\*  
No trade needed  
Other Sizes Available

- New interlocking center lugs deliver important cushioning the ride on pavement
- 60% increase in biting tread edges lets you work faster in all kinds of soil - wet or dry

## IT510 RADIAL



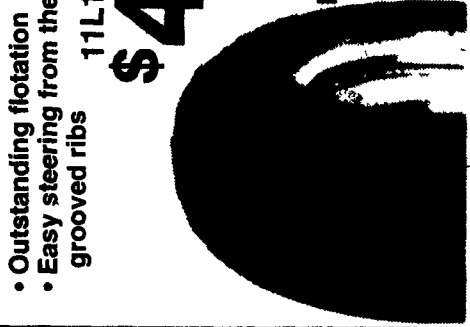
175 LR 24 8 Ply

**\$549.00**

Other Sizes Available

- Maximum traction supplied by additional biting edges from the overlapping lug/block pattern
- Flotation and traction provided by a larger contact patch

## FARM UTILITY

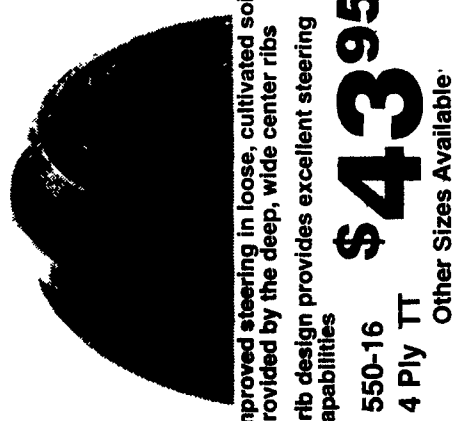


Outstanding flotation  
Easy steering from the heavy grooved ribs

11L15 8 Ply TT  
**\$46.95**

- Other Sizes Available
- Rib Implement Tire- Easy Operation For Many Types of Equipment

## TRIPLE RIB HD



- Improved steering in loose, cultivated soil provided by the deep, wide center ribs
- 3 rib design provides excellent steering capabilities

550-16  
4 Ply TT  
**\$43.95**

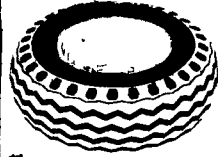
Other Sizes Available

## LABORER

Heavy Duty Industrial Tractor Front  
Wheels 11L-15 8 Ply

**\$89.95**

OTHER SIZES AVAILABLE



## INDUSTRIAL TIRES

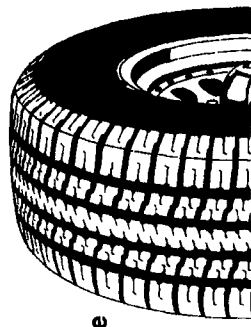


175L-24 - 8 Ply

**\$269.00**

Other Sizes Available

## Workhorse Radial



Other Sizes Available

Economy All-Weather Radial For Light Trucks

P235 75R15  
**\$75.95**

## SURE GRIP LUG

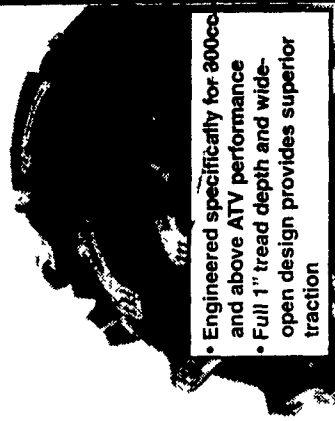


6 Ply  
10-16.5  
**\$99.00**

Other Sizes Available

## TRACKER MUD RUNNER

Our Most Aggressive  
ATV Mud Tire



- Engineered specifically for 300cc and above ATV performance
- Full 1" tread depth and wide-open design provides superior traction

**Bastian Tire Sales**  
Rt 11 & 15  
Shamokin Dam, PA  
1-800-326-9465

**Horlacher & Sherwood**  
153 E Tioga  
Tunkhannock, PA  
570-336-1116

**Neatons Tire**  
25 East Ave  
Easton, MD  
1-800-317-6152

**BHM Farm Equipment**  
RD 1 Rt 934 North  
Annville, PA  
717-867-2211

**Lebanon Valley Imp. Co.**  
700 E Linden St  
Richland, PA  
717-866-7518

**Service Tire Truck Centers, Inc.**  
1601 Manheim Pike  
Lancaster, PA 17604  
717-569-8473

**Dices Tire Shop**  
1421 Lincoln Way  
Chambersburg, PA  
717-264-9312

**Service Tire Truck Centers, Inc.**  
3403 Concord Road (pic Building)  
York, PA 17402  
717-755-8473

**Zimmerman Farm Service**  
School Rd  
Bethel, PA  
717-933-4114

**Bastian Tire Sales**  
R2603 Reach Road  
Williamsport, PA 17701  
1-800-362-5279

**Donald B. Rice Tire Co.**  
1420 Tilco Drive  
Frederick, MD 21701  
1-800-407-0556

**Service Tire Truck Centers, Inc.**  
4000 Fenton Ave  
Harrisburg PA  
717-561-8473

**TWO REASONS YOU CAN COUNT ON GOODYEAR**

**Goodyear's New Agricultural Warranties**  
See Your Local Goodyear For Full Details.



**CALL 1-800-FARMTIRE. GOOD YEAR As American As Farming.**

Check our Web Site @ [www.Goodyear.com](http://www.Goodyear.com) Click on tires-- Click on North America tire--Click on Farm & Industrial