

# Youth Qualify At Southcentral District Dairy Show

SHIPPENSBURG (Cumberland Co.) — A number of youth who exhibited dairy cattle recently at the Shippensburg Fairgrounds at the Southcentral District FFA & 4-H Dairy Show qualified for entry in the state dairy show Sept. 20 in Harrisburg.

The state district dairy shows are second level qualifiers for the state show. Judges at the district shows select animals deemed worthy of state competition and award blue ribbons, regardless of show placing.

During breed sanctioned and other shows, the show placings determine the worthiness of an animal, and placings accrued during the show season are recognized by breed associations. For example, Holstein exhibitors can qualify their animals for All-American and All-Pennsylvania honor consideration through consistent show season success.

However, since the quality of cattle isn't even throughout the state, the blue ribbon process for the youth allows lower placed animals in shows with high competition to qualify for entry in the state finals, held in conjunction with the Pennsylvania All-American Dairy Show at the state Farm Show Complex in Harrisburg.

It also allows judges to eliminate from state entry those animals with little competition that place high in their animal age class.

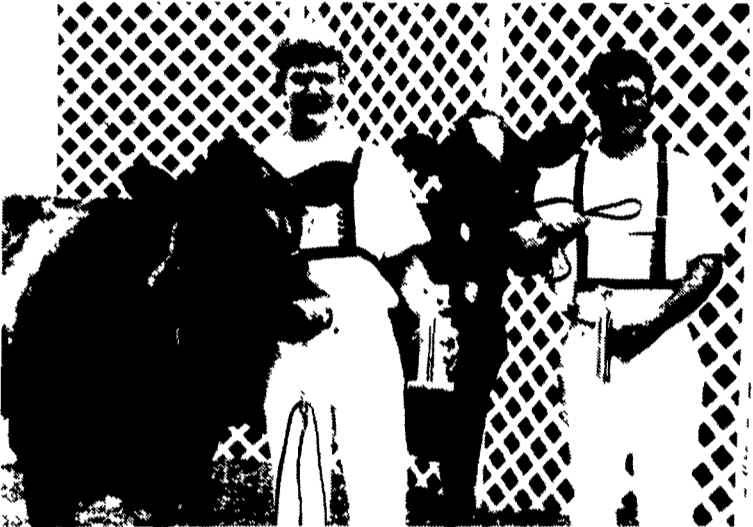
Depending upon local 4-H rules, which can prohibit some youth from qualifying at district shows if they have not met local 4-H program requirements, youth are no longer restricted to participating in a district show nearest to their home, but are free to enter any of the district shows held statewide July through August.

At the Southcentral District show, youth from Bucks, Cumberland, Franklin, Huntingdon, Lancaster, Perry and York counties participated.

The following is a list, by county, of those who received blue ribbons and may compete in Harrisburg at the state competition.



Showing the grand champion Jerseys of the Southcentral District FFA & 4-H Dairy Show are, from the left, Jack Rotz with the reserve grand champion, and Logan Horst with the grand champion.



Showing the grand champion Milking Shorthorn of the Southcentral District FFA & 4-H Dairy Show are, from the left, Travis Harshman with the reserve grand champion and Jason Nailor with the grand champion.



Showing the grand champion Brown Swiss of the Southcentral District FFA & 4-H Dairy Show are, from the left, Brain Nailor at the halter of Sarah Wickard's reserve grand champion, and Sarah with her grand champion.



Showing the grand champion Ayrshire of the Southcentral District FFA & 4-H Dairy Show are, from the left, Michelle Ocker with the reserve grand champion and Michael Wood with the grand champion.



Showing the grand champion Holstein of the Southcentral District FFA & 4-H Dairy Show are, from the left, Scott Jones with the reserve grand champion and Ben Mickey with the grand champion.



Showing the grand champion Guernsey of the Southcentral District FFA & 4-H Dairy Show are, from the left, Emily Stuff with the reserve grand champion, and Jason Nailor with the grand champion.

Owner	Breed	Class	Group
<b>Bucks</b>			
McCauley, Krista	Holstein	Summer Yearling	4-H
McCauley, Kristin	Holstein	Spring (Jr) Yearling	4-H
McCauley, Kristin	Jersey	Fall (Sr) Calf	4-H
<b>Cumberland</b>			
Blasco, Timothy	Holstein	Spring (Jr) Yearling	4-H
Blasco, Timothy	Jersey	Summer Yearling	4-H
Blasco, Timothy	Jersey	Summer Yearling	4-H
Blasco, Timothy	Jersey	Fall (Sr) Calf	4-H
Comman, Aaron B.	Brown Swiss	Spring (Jr) Calf	4-H
Comman, Aaron B.	Brown Swiss	Junior 2-year old	4-H
Comman, Rebecca A.	Jersey	Winter (Int) Calf	4-H
Comman, Rebecca A.	Jersey	Senior 2-year old	4-H
Comman, Rebecca A.	Jersey	Four-year old	4-H
Creek, Morgan L.	Holstein	Junior 3-year old	4-H
Day, Sarah	Holstein	Spring (Jr) Calf	4-H
Day, Sarah	Holstein	Spring (Jr) Yearling	4-H
Day, Sarah	Holstein	Senior 3-year old	4-H
Fuller, Ton Jo	Jersey	Spring (Jr) Calf	4-H
Fuller, Ton Jo	Jersey	Winter (Int) Calf	4-H
Fuller, Tori Jo	Jersey	Fall (Sr) Calf	4-H
Fuller, Ton Jo	Jersey	Spring (Jr) Yearling	4-H
Fuller, Ton Jo	Jersey	Winter (Int) Yearling	4-H
Hammond, Gregory F	Holstein	Winter (Int) Calf	4-H
Hammond, Mark C.	Jersey	Fall (Sr) Calf	4-H
Hoover, Linnea D.	Guernsey	Dry Cow 2-yr. & over	4-H
Hoover, Linnea D.	Guernsey	Dry Cow 2-yr. & over	4-H

Hoover, Linnea D.	Guernsey	Spring (Jr) Yearling	4-H
Hoover, Linnea D.	Guernsey	Spring (Jr) Calf	4-H
Kendrick, Brandon	Holstein	Winter (Int) Yearling	4-H
Kramer, Derek	Holstein	Spring (Jr) Yearling	4-H
Kramer, Derek	Holstein	Winter (Int) Calf	4-H
Kramer, Jennifer	Holstein	Winter (Int) Yearling	4-H
Kramer, Jennifer	Holstein	Spring (Jr) Calf	4-H
Nailor, Brian W.	Milking Shorthorn	Spring (Jr) Calf	4-H
Nailor, Brian W.	Guernsey	Spring (Jr) Calf	4-H
Nailor, Brian W.	Guernsey	Junior 2-year old	4-H
Nailor, Brian W.	Guernsey	Senior 2-year old	4-H
Nailor, Jason M.	Milking Shorthorn	Fall (Sr) Calf	4-H
Nailor, Jason M.	Milking Shorthorn	Fall (Sr) Yearling	4-H
Nailor, Jason M.	Milking Shorthorn	Dry Cow 2-yr. & over	4-H
Nailor, Jason M.	Milking Shorthorn	Junior 2-year old	4-H
Nailor, Jason M.	Guernsey	Junior 3-year old	4-H
Ocker, Michelle E.	Ayrshire	Spring (Jr) Calf	4-H
Ocker, Michelle E.	Ayrshire	Senior 2-year old	4-H
Potteiger, Chad	Jersey	Summer Yearling	FFA
Potteiger, Chad	Jersey	Fall (Sr) Yearling	FFA
Runker, Sonya L.	Holstein	Spring (Jr) Yearling	4-H
Runker, Sonya L.	Jersey	Spring (Jr) Yearling	4-H
Runker, Sonya L.	Holstein	Fall (Sr) Yearling	4-H
Runker, Sonya L.	Holstein	Four-year old	4-H
Wickard, Sarah A.	Brown Swiss	Fall (Sr) Calf	4-H
Wickard, Sarah A.	Brown Swiss	Summer Yearling	4-H
Wickard, Sarah A.	Brown Swiss	Winter (Int) Yearling	4-H
Wickard, Sarah A.	Brown Swiss	Dry Cow 2-yr. & over	4-H
Wickard, Sarah A.	Brown Swiss	Five-year old	4-H
Woods, Michael K.	Holstein	Junior 2-year old	4-H

Woods, Michael K.	Ayrshire	Four-year old	4-H
Woods, Michael K.	Guernsey	Four-year old	4-H
Zinn, Janel	Ayrshire	Winter (Int) Calf	4-H
Zinn, Jennifer	Ayrshire	Spring (Jr) Yearling	4-H
Zinn, Jennifer	Ayrshire	Four-year old	4-H
<b>Franklin</b>			
Burdette, Kyle	Holstein	Winter (Int) Calf	4-H
Burdette, Kyle	Holstein	Fall (Sr) Calf	4-H
Burdette, Kyle	Holstein	Winter (Int) Yearling	4-H
Burdette, Kyle	Holstein	Winter (Int) Yearling	4-H
Burdette, Kyle	Holstein	Dry Cow 2-yr. & over	4-H
Burdette, Kyle	Holstein	Senior 2-year old	4-H
Cordell, Kala B.	Jersey	Spring (Jr) Calf	4-H
Cordell, Melinda D.	Jersey	Fall (Sr) Calf	4-H
Cordell, Melinda D.	Holstein	Spring (Jr) Yearling	4-H
Corder, Alyssa K.	Holstein	Senior 2-year old	4-H
Corder, Andrew R.	Holstein	Winter (Int) Yearling	4-H
Corder, Andrew R.	Holstein	Senior 3-year old	4-H
Dunsmoor, Abby N.	Holstein	Spring (Jr) Calf	4-H
Dunsmoor, Ariel C.	Holstein	Spring (Jr) Calf	4-H
Eshelman, Jessica	Holstein	Spring (Jr) Calf	4-H
Eshelman, Jessica	Holstein	Winter (Int) Calf	4-H
Eshelman, Jessica	Holstein	Spring (Jr) Yearling	4-H
Eshelman, Jessica	Holstein	Junior 2-year old	4-H
Harshman, Travis L.	Milking Shorthorn	Junior 2-year old	4-H
Harshman, Travis L.	Milking Shorthorn	Spring (Jr) Yearling	4-H
Harshman, Travis L.	Holstein	Fall (Sr) Yearling	4-H