

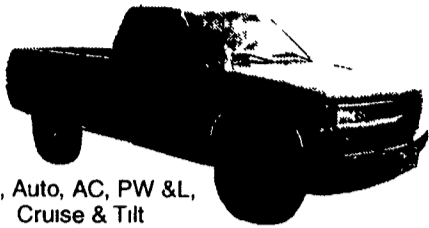
THE HONDRU EXPERIENCE

OVER 200 TRUCKS AVAILABLE FROM OUR 4 DEALERSHIPS

E-TOWN CHEVROLET

Oldsmobile Pontiac
Route 230 E-Town • 717-361-7776

1996 CHEVY 1500 SILVERADO 4X4



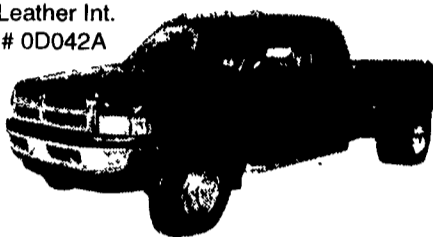
V-8, Auto, AC, PW & L, Cruise & Tilt
Z71 Off Road Pkg

E-TOWN DODGE

Route 230 E-Town • 717-367-6644

1997 DODGE RAM 3500 CLUB CAB SLT LARAMIE

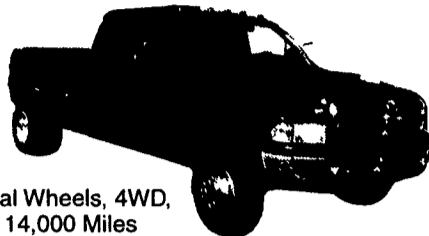
Cummins Turbo Diesel, Auto, Leather Int.
Stock # 0D042A



PHILLIPS FORD

Route 72 Manheim • 717-665-3551

1998 DODGE 3500 SUPER CAB

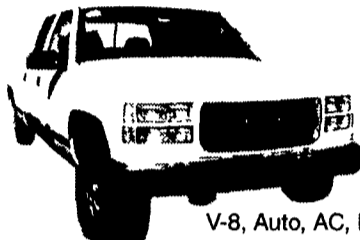


Dual Wheels, 4WD,
14,000 Miles

MANHEIM CHRYSLER PLYMOUTH GMC

Route 72 Manheim • 717-665-2473

1999 GMC 2500 CREW CAB



V-8, Auto, AC, PW & L, Cruise & Tilt, White
Stock #9G190

All prices Include Rebates, Exclude Tax, Tag and \$40 Dock Fee

**LOADS OF USED PICKUPS
CALL ANY STORE FOR DETAILS**

Email - hondruauto@aol.com

OVER 20 CHASSIS IMMEDIATELY AVAILABLE FOR BODY INSTALLATION
AT OUR LOCAL BODY COMPANIES!

KEENS

SERVICE, INC

OO "Since 1963" I

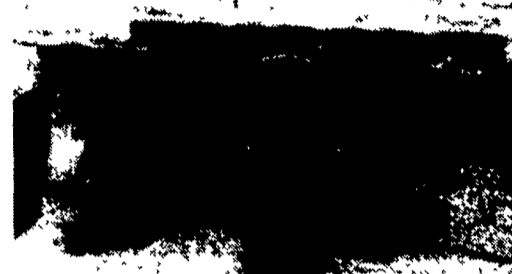
(717) 626-5420
Lititz, PA

• Sales • Rentals
• Service



40' Van Trailers Roll Doors \$1,800 to \$2,800

Air Ride Tandem \$1,200 to \$2,500



95 CHEV. 2500 EXT. CAB
Cheyenne, 4x2, 350 FI Eng., AT, A/C, AM-FM Cass., Cruise, Tilt, 8600 GVW, Teal Green, 60,000 Mi
\$15,900



95 CHEV. 3500 CREW CAB DUALLY
4WD, Cheyenne 6.5 Turbo Diesel, 5 Sp., A/C, AM/FM 9 ft. Flatbed Aluminum, 5th Wheel Hookup, 10,000 GVW, 4 10 Rear, 86,000 Mi., White
\$18,500



97 FORD F250 XLT SUPER CAB
4WD, 351, AT, A/C, AM/FM Cass., PW PL, Cruise, Tilt, 8 800 GVW, 44,000 Mi., Dark Green
\$21,900



96 CHEVY 3500 CHEYENNE CREW CAB
4WD, 350 Vortec 5 Spd., A/C, AM/FM, Cruise, 9200 GVW, 4 10 Lid, Slip Rear, 49,000 Miles, Dark Blue
\$20,900



97 FORD F-250 XL, SUPER CAB
4x4, 351 FI Eng., AT, AC, AM-FM Cass., 8,800 GVW, One Owner, 37,000 Miles, Red
\$20,900



96 GMC 2500 SLE
4WD, 350 Vortec, AT, A/C, PW, PL, Cruise, Tilt, AM/FM Cass., 4 10 Rear, 8600 GVW, 67,000 Mi., Blue & Silver
\$18,300

MARTIN'S AUTO SALES

1025 W. Main St. New Holland, PA 17557
(717) 656-6621

GRIMES TRUCK CENTER

12835 Salem Avenue • Hagerstown, Maryland 21740 • 301/790-2200

INTERNATIONAL RENEWED ENGINES 7.3L ENGINE

* 24 mo. unlimited mileage warranty *

- Delco Remy is the ONLY Authorized remanufacturer of V8 engines for International®.
- All engines are manufactured using parts from OEM approved suppliers.
- All engines are final factory tested using computer controlled equipment
- Our extensive warranty is honored at International dealers across the United States and Canada. They can provide you any service or part sales you require for your 7.3L diesel vehicle
- Through an exclusive agreement with International, Delco Remy IS THE ONLY REMANUFACTURER providing new cylinder heads on 7.3L engines, as required
- Delco Remy utilizes no heavy laced or welded cylinder heads



991515C94 Trimmed 7.3L Natural Aspirated, 1987+ International
991520C93 Trimmed, 7.3L Natural Aspirated, 1987+ F Series

The Best Value in the Industry

With the improved design, increased quality, leading warranty coverage, competitive pricing and the reputation of International and Delco Remy standing behind the product, you will have the piece of mind you need and the value you demand

Delco Remy \$4575⁰⁰ Exch.

800-474-6371

301-790-2200

CHEVROLET GMC

Sutliff

GM PARTS

GENUINE GM PARTS FOR ALL GM VEHICLES
800-932-0284

Free Delivery Routes In 12 Counties In Central PA
Call For Specifics

25 PARTS PROFESSIONALS TO SERVE YOU
ENGINES – TRANSMISSIONS
A.C. DELCO – SHEET METAL
ALL IN STOCK AND PRICED RIGHT
IF YOU NEED GM PARTS
WE'VE GOT WHAT YOU NEED

SUTLIFF GM PARTS

13th & Paxton
Harrisburg, PA



We Want Your Business

A **GM** Goodwrench Service Plus Dealer

The Plus means better.

CHEVY TRUCK

OLDS

BUICK

CADILLAC

PONTIAC