

KEYSTONE TARPS

SERVICE & SALES

Is A Manufacturer Of Custom Tarps

- Systems
- Tarp Straps
- Storage Covers
- Load Straps
- Gloves
- Used Railroad Ties



1-800-798-TARP
(8277)



FAX 717-435-0036 717-435-0752

1963 aluminum dump trailer, 24' w/bows & tarp, \$3650. Will reduce \$50/day starting 8/23/99 till sold. 717-534-1253

1985 GMC 7000

w/24' Super 10 Jerr-Dan rollback, good condition Lycoming Co.

(717) 494-0441

'94 Chevy Cheyenne HD 2500, 4x4, extended cab, 350 Fl, 5 spd, PS, PB, air, 8,600 GVW, towing package, new radials, excellent condition, \$14,500. 717-733-2873

1983 Mack MS200 midliner, Morgan body, new tires & battery, good condition, cab restored, 25,000 GVW, \$7900. 717/664-2337.

99 Ford 550 XLT 4x4 diesel AC, AT, AMB, Pkg. 12' flat dump 300 mi \$35,900. 610-837-0791.

1981 Ford 900 w/2000 gal. field tank w/hoses & pump, \$2000. 717-534-1253

FARM DUMP TRAILERS

(Direct from the Manufacturer)

6-Ton Dump Trailer

- 10 ft. x 7 ft.
- Floating Tandem Axle
- 3 ft. Front, 3 ft. Tailgate & Grain Chute
- 16 in. Extendable Sides
- 10 ga. Floor & Sides
- 11Lx15 Flotation Tires
- 2-Way 4 in. x 24 in. Hydraulic Cylinder includes hoses



7-Ton Road Dump Trailer

- Fifth wheel or bumper type
- 16 ft. x 8 ft. deck 3 ft. front rack and pockets side & back
- D.C. hydraulic pump & battery mounted in locking tool box.
- 12 ton drop leg jack
- 10 ga. floor
- 6x3x3/16 tube main frame
- Sealed beam lighting
- 7000 lbs. per axle rating
- Electric brakes on both axle
- 16" tires on white spoked rims
- \$6400 U.S. delivered in Northeast U.S.A.



BERKELMAN'S WELDING

RR 7, AYLMEER, ONTARIO, CANADA N5H 2R6
(519) 765-4230

WHITMOYER

FORD • MERCURY

YOUR FARM & PERSONAL TRUCK HEADQUARTERS

USED TRUCKS



1996 GMC Yukon
4x4, PS, PB, AC, PW&L, Burgundy
\$18,995



1995 Toyota Tacoma SR5
4x4
Auto., PW & L
\$18,500

1996 Chevy Tahoe
4x4, 4 Doors, Equipped, Local 1 Owner, Dark Green



1998 Ford Expedition XLT
Black, PW & L, Dual AC, 3rd Seat, Ciera Center, Only 4,000 Miles
\$31,995



1997 Ford Expedition 4x4
Tan, PW & L, Cruise & Tilt, Only 19,000 Miles



1995 Ford Bronco Eddie Bauer
Dark Green, PW & L, 56,000 Miles
\$16,900

Call for details . . . we probably have what you are looking for.



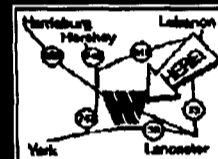
Whitmoyer

FORD • MERCURY

Rt. 283 & Rheems/L-town Exit • Elizabethtown
Sales Hrs: M-F 8:30 am - 9 pm • Sat. 9 am - 5 pm

717-367-7022 or 1-800-267-2088

www.auto-locate.com/whitmoyerford



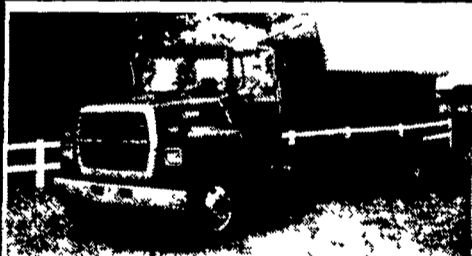
e-mail us at: whity@red.rose.net

AL HAMILTON MANAGEMENT COMPANY

P.O. Box 157 • 55 Doe Run Road • Manheim, PA 17545

Phone: 717-665-7145 • Fax 717-665-2137

★ ★ ★ ★
"CLEANEST TRUCKS AROUND"
★ ★ ★ ★



1992 Ford LN8000
C&C 7.8 L Diesel, 210 HP, 6 Spd. Trans., Custom Int., 234" WB, 168" CA, 33,000 GVW
\$19,500



1993 Int. 4900
C&C DT 466, 210 HP, 5 Sp. Trans, 2 Sp. Rear, 236 WB, 168" CA, 35,000 GVW
\$20,500



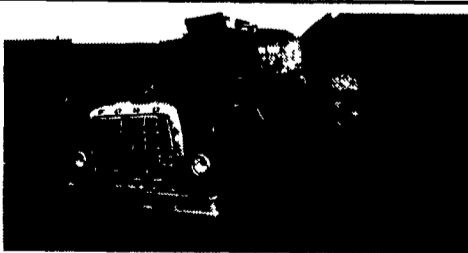
1991 Ford LN9000
w/New 10' Dump, L-10 Cummins, 9 Spd. Trans, 34,700 GVW
\$25,500



1980 Ford LN8000 C&C
3208 Cat, 210 HP, 5 Spd. Trans, 2 Spd. Rear, PS, Air Brakes, WB 204", CA 138"
\$11,500



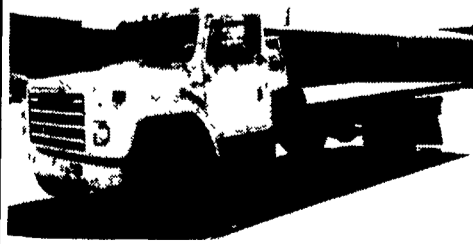
1988 Ford LN8000 Dump
7.8L, 240 HP, 7 Spd. Trans, 39,000 GVW, Custom Int., Excel. Cond., New 10' Dump
\$20,500



1983 Ford LN7000 C&C
3208 Cat, 210 HP, 5 Spd. Trans, 2 Sp. Rear, Hyd. Brakes, WB 220", CA 156", 24,000 GVW
\$10,500



1986 Ford LN8000 C&C
3208 Cat, 210 HP, 5 Spd. Trans, 2 Sp. Rear, Custom Cab, WB 240", CA 170"
\$14,500



1983 Int. S1600
18' Jerr-Dan Rollback w/Equip. Hitch, Alum. Bed w/Wood Floor, 6.9L Diesel, 5 Spd. Trans, Hyd. Brakes
\$10,500



1994 Ford LN8000 C&C
8.3 Cummins, 6 Spd. Trans, Custom Cab, AC, WB 246", CA 180", 33,000 GVW
\$21,500



1991 Ford LNT 8000 C&C
7.8L Diesel, 240 HP, 10 Spd. Trans, Custom Int., A/C, WB 264", CA 192", 56,000 GVW
\$26,500



Misc. Van Bodies
Your Choice
\$800