

THE LEGEND LIVES



- Durable And Reliable - Engine Life Routinely Exceeds 20,000 Hrs.
- Lower Fuel Consumption
- Exceeds All Pending Exhaust Emission Requirements
- Genuine Bosch Injection Equip.

Air Cooled And Water Cooled Engines In All Horse Power Ranges For A True Heavy Duty Diesel Without The Heavy Duty Price Tag, Call Today Used Deutz power units available

RUFUS BRUBAKER REFRIGERATION & POWER

76 Pumping Station Rd. Quarryville, Pa 17566
717-786-1617

24 Hr. Emergency Service Available

WANTED:

Good Used Milk Tanks - Any Size
No Ice Banks or Girton
1-800-448-4697

DIESEL ENGINE
Sales & Service



Also:

- Complete air systems
- Water pumps
- Skid loader & backhoe service

Smucker's Sales & Service

643 Peters Rd., New Holland, PA 17557

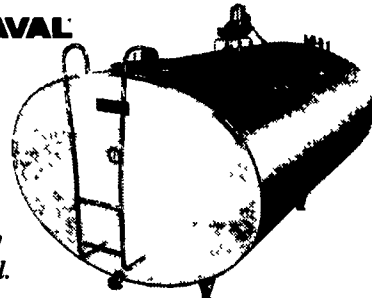
(717) 354-4158

If no answer, call (717) 351-1009

Amos Smucker, Proprietor

OUR SPECIALTY IS SALES AND SERVICE OF NEW & USED BULK MILK TANKS

DE LAVAL



Featuring The DeLaval New Century 600-5,000 Gal.

We Will Service Any Make Bulk Tank
H.W. MARTIN REFRIGERATION SERVICE

501 E. Woods Dr. Lititz, PA 17543
Phone: (717) 626-6355

Big Valley 24' livestock trailer, good condition, \$5000. 717-355-9262

Good #2 wire fence 1/2x1, 1x1, 1x2, 1 1/2x1 1/2, 2x2, 2x4, 50¢/lb; PVC coated 85¢/lb. Field fence 35¢/lb. Special price large amounts. 717-445-6885, 1-800-373-3703.

FREE FENCE GUIDE/CATALOG: Tensile, electric, portable. Cattle, deer, horse. 1-800-KENCOVE (536-2683), 724-459-8991, www.kencove.com.

Heavy Duty Fiberglass

| | |
|----------------|-----------------|
| 4ft - \$46.00 | 12ft - \$79.75 |
| 8ft - \$61.00 | 14ft - \$96.75 |
| 10ft - \$68.50 | 16ft - \$104.75 |

Heavy Duty Steel Tubing

| | |
|---------------------|-----------------|
| 2" 16 Gauge; 6-Rail | |
| 8ft - \$70.00 | 14ft - \$103.00 |
| 10ft - \$80.00 | 16ft - \$113.00 |
| 12ft - \$90.00 | 18ft - \$128.00 |

1" Galvanized Tube; 7 Rail

| | |
|----------------|----------------|
| 4ft - \$36.00 | 14ft - \$72.00 |
| 8ft - \$52.00 | 16ft - \$82.00 |
| 10ft - \$58.00 | 18ft - \$92.00 |
| 12ft - \$64.00 | |

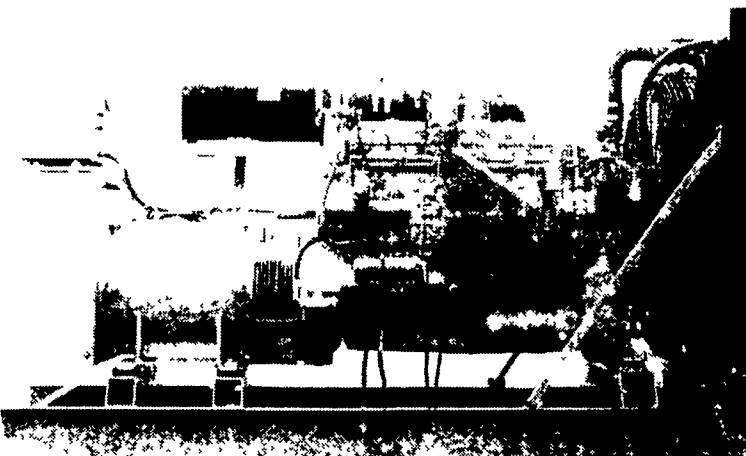
1" Painted Steel Tube; 6 Rail

| | |
|----------------|----------------|
| 8ft - \$49.00 | 14ft - \$62.00 |
| 10ft - \$51.00 | 16ft - \$75.00 |
| 12ft - \$55.00 | 18ft - \$87.00 |

New Mesh Deer Fence

8' - It's light
It works
Installation & Sales
Custom Made Cattle & Deer Guards
410-692-0250

GENERATORS



MARTIN ELECTRIC PLANTS • Manufacturer of: DIESEL, LP GAS, NATURAL GAS, PTO Automatic & Manual Start Systems
USED UNITS ALSO AVAILABLE

Call Us For All Your Generator Needs!

MARTIN ELECTRIC PLANTS

280 Pleasant Valley Rd., Ephrata, PA 17522-8620

800-713-7968

Tel: 717-733-7968 Fax: 717-733-1981

The FIRST WATERER DESIGNED FOR FREESTALL INSTALLATIONS

BIGspring Model #6100 Livestock Waterer
Designed for Quick & Easy Cleaning and a 10 Year Warranty



ALSO: 1, 2 & 4 Hole Water Fountains
Feed Bunks - Many sizes
MIRACO
A division of Ahrens Agricultural Industries

ROVENDALE AG & BARN EQUIP.

WATSONTOWN, PA 17777
570-538-9564 OR 570-742-4226
Exit 31, I-80 to I-180 Watonsontown Exit
Hours: Mon-Fri 8 to 5 Sat 8 to 12

RUBBER MATS

for Comfort Stalls, Free Stalls, Horse Stalls, Horse & Cattle Trailers, Hog Houses. Used Belting Material.

Welsh Hill Farm Supply
Paul N. Brubacher

610-286-5298 or
Raymond 610-286-0168
Glenn 610-286-0706

Melodie Ranch Fencing

Specializing in Hytensil Fences, Board Fences and Deer Control Fences
Check Our Prices



Carson Z. Martin, RR #3 Box 180
Selinsgrove, PA 17870

PRO FENCE

Call for prices on high tensile and board fence
140 High Rd Shippensburg, PA 17257
(717) 530-0128 1-800-433-6236

DUTCH HOLLOW FARMS

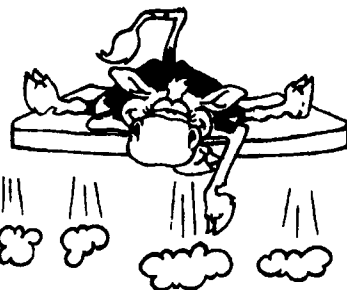
895 Meadow Road, Bridgewater, NJ 08807

Serving New Jersey's Fencing Needs

• High Tensile Fence

• CowCo/Palco Livestock Equip.

908/725-3049



Mighty Lite™ THE PROVEN DAIRY MAT

Still the same and still in use after more than 11 years.

- A Full 5 Year Warranty that protects you even against wear & tear in tie stall and freestall barns
- Non-absorbent closed cell foam does not support bacterial growth.
- Non-abrasive surfacing to protect hocks, teats and udders.

Far softer than hard rubber...far cleaner than mattresses... far easier to manage and handle than both.

ATTENTION

- 150 Gal Zero Self-Contained (nice)
- 150 Gal Mueller
- 155 Gal Sunset
- 180 Gal Milkkeeper (Self Contained)
- 200 Gal Majonnier Self Contained (nice)
- 200 Gal Mueller
- 200 Gal Milkkeeper (self Contained)
- 250 Gal Sunset
- 250 Gal Mueller
- 250 Gal Milkkeeper Self Contained
- 300 Gal Mueller M
- 300 Gal Sunset
- 300 Gal Girton
- 400 Gal Girton D4
- 400 Gal Milkkeeper (Self Contained)
- 400 Gal Mueller
- 400 Gal Jamesway
- 415 Gal Sunset
- 500 Gal Dankool
- 500 Gal Girton
- 500 Gal Mueller O
- 500 Gal Sunset
- 500 Gal Self Contained
- 500 Gal Majonnier
- 500 Gal Mueller M
- 500 Gal Mueller OH
- (3) 600 Gal Girton (D4)
- 600 Gal Majonnier
- 600 Gal Mueller OH
- 600 Gal **SOLD OH**
- 600 Gal Mueller M
- 600 Gal Sunset
- 600 Gal Storage
- 625 Gal Girton D5
- 700 Gal Mueller O
- 700 Gal **SOLD PA**
- 800 Gal Girton D5
- 800 Gal Girton D4
- 800 Gal Mueller O
- 800 Gal Dankool
- 800 Gal Mueller OH
- 800 Gal Storage
- 1000 Gal **SOLD PA**
- 1000 Gal Mueller M
- 1000 Gal Mueller OH (3)
- 1000 Gal **SOLD OH**
- 1000 Gal Mueller O
- 1000 Gal Storage
- 1000 Gal Sunset
- 1000 Gal Surge
- 1000 Gal Girton D5
- 1250 Gal Storage
- 1250 Gal Surge
- 1250 Gal Mueller M
- 1250 Gal Mueller OH
- 1250 Gal Van Vetter
- 1250 Gal Girton D5
- 1250 Gal DeLaval
- 1500 Gal Dankool
- 1500 Gal Surge
- 1500 Gal Storage
- 1500 Gal **SOLD NEB**
- 1500 Gal Mueller OH
- 1500 Gal Girton D4
- 1500 Gal Girton D5
- 1500 Gal Mueller OE
- 1500 Gal DeLaval (New Century) Late Model
- 2000 Gal Mueller O
- 2000 Gal Mueller OH
- 2000 Gal Dankool
- 2000 Gal Surge
- 2000 Gal **SOLD NY**
- 2000 Gal Zero
- 2500 Gal Storage
- 2700 Gal Storage
- 3000 Gal Storage
- 3000 Gal Globe (Dankool)
- 3000 Gal Milkkeeper
- 3000 Gal Mueller OH
- 3000 Gal Dankool
- 3500 Gal Storage
- 4000 Gal DeLaval
- 4000 Gal Storage
- 4000 Gal **SOLD MICH**
- 4000 Gal Globe (Dankool)
- 5000 Gal Milk or Storage
- 6000 Gal Milk or Storage

HEAT EXCHANGERS
• Therma Stor 80 • Therma Stor 100
• Mueller Fre Heater 105 Gal.
• Therma Stor III, 120 Gal. • Mueller Fre heater 50 Gal.
• 300-6000 Gal. Storage Tanks
Installation, Sales And Service

RAY SHENK

505 E Woods Drive Lititz, PA 17543
Sales 717-626-1151 24 Hr. Service



Show-Ease Stall Co.

573 Willow Road, Lancaster, Pa 17601

PHONE: (717) 299-2536

FAX: 717-299-1074

