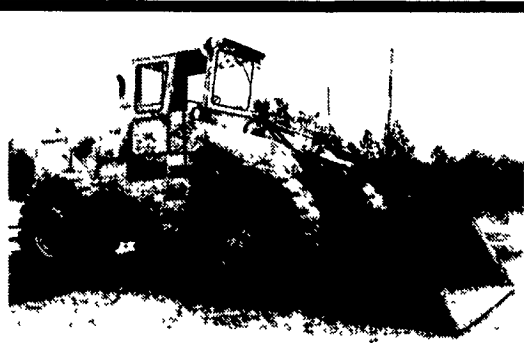


1A CONSTRUCTION EQUIPMENT

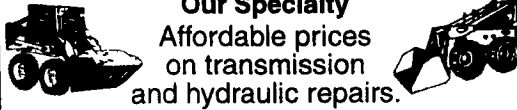


**1968 Hough Wheel Loader
\$10,500**

MARTIN LIMESTONE, INC.
390 Quarry Road, New Holland, PA 17557
Jim Conley (717) 354-1394

Jonestown Ag Repair Shop

Skid Loader Repairs & Rentals
Our Specialty



Affordable prices on transmission and hydraulic repairs.

Galaxy skid loader tires sold here.

Painting & Sandblasting

170 Old Rt. 22, Jonestown, PA 17038
Darvin Weaver
717-865-9427 717-865-9096 Fax

Equipment

CHALK

Sales -150 Forklifts
In Stock



410-686-6800
BALTIMORE, MD

**CASE 1845C
SKID LOADER**
New 12.00 16.5 Tires,
60" Dirt Bucket
w/Tooth Bar,
3400 Hrs.,
Very Nice



717-933-9186

PA TRACK & WELDING

"Your One-Stop Undercarriage Co."

- Track press service (1 day turnaround if scheduled)
- Exchange roller & idler program reduces downtime
- Pad regrousing & grouser bar
- New parts for most makes of loaders, dozers, & excavators
- Used parts (ready to install)
- In shop & field labor
- Bucket rebuilding & line boring
- PU & delivery

Call Dale at 1-888-387-2510

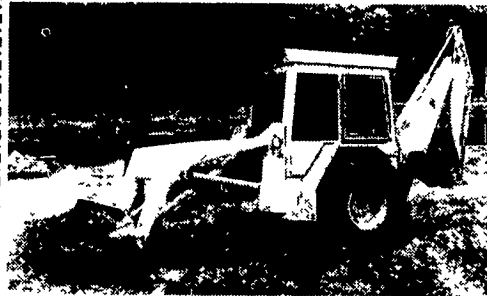
For quote or free undercarriage inspection

PA TRACK & WELDING

- 1) Set 977L/D-7E sait rails, 40%, turned P&B \$1,800 set
- 1) Set 977H track groups, new P&B, regr pads \$3,000 set
- 2) Set of rails, will fit 951C/955K/D-51 JD-655 & 750
- 1) Set track groups for JD1010/2010/440 w/loader pads, like new. . . \$1,100 set
- 1) Set JD-350 track groups, loader or dozer pads
- 1) Set track groups 955L/D-60 have loader & dozer pads avail
- Reshelled rollers in stock D-3 thru 977/D-7
- TD-25C/D/E track groups-80°10 sait rails

- We Also Sell New Parts For All Makes Of Undercarriage
- Track Press Service

**Call 1 (888) 387-2510
For More Details**



**John Deere JD410 Backhoe
\$10,000**

Heavy Equipment Loader Parts, Inc.
10070 Allentown Blvd, Grantville, PA 17028
(717) 469-0039 (800) 446-0505



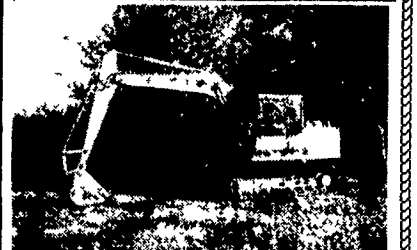
96 JD 450G Series IV, 1500 Hrs, Pedal Steer... \$42,500 or Rent



Cat 955L, 77 Model, Big U.C. \$26,000 or Rent



96 Case 1150 G, LGP, Long Track, 2600 Hrs., w/Warranty \$59,000 or Rent



91 Cat E110B. \$26,500 or Rent

JD 655B, LGP, 88 Model, New S.A.L.T. U/C, 6500 Hrs. \$29,500 or Rent

Cat 973 w/Cab & Ripper, 83 Model Coming In

Cat 953, 81 Model, 40% U.C., Rebuilt Motor \$29,000 or Rent

Lull 644 95 Model, 3000 Hrs., JD Dsl \$39,000 or Rent

'86 Liebherr 711 Dozer, 6-Way Blade, Cab, 4500 Hrs., Very Nice, Well Maintained machine \$19,500

Cat 973 w/Cab & Ripper, 84 Model \$42,000

**Rentals Available
Day, Week or Month**

**Jay Weaver, LLC
Reinholds, PA
717/336-7375**

Financing and Lease
Purchase Available
• No Sunday Calls



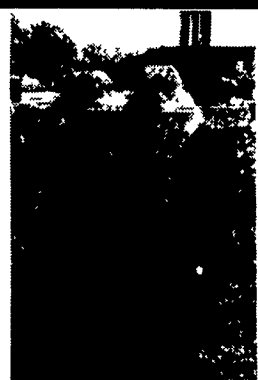
**LABOUNTY GRAPPLE
TR170 FOR CAT 245
SIZE MACHINE
\$17,900**



**PEMBERTON
GRAPPLE FOR PC400
SIZE MACHINE
\$7,900**



**48" LINKBELT
BUCKET
\$1,400**



**LABOUNTY HDR120
S/N 12682 FOR CAT
325L (C-LINKAGE)
\$11,900**



**18"/42" THUMB, HYD &
STIFF ARMS INCLUDED
\$2,500**



**LABOUNTY UP4
\$9,900**



**LABOUNTY HDR170
\$11,900**



**46" BUCKET FOR
CAT 245
\$2,900**



**PRENTICE GRAPPLE
\$1,400**



**LOGGING GRAPPLE
\$795**



**21" HYD. 4-IN-1
BACKHOE BUCKET
W/CYL. & HYD. HOSES -
\$1,495**



**410 PRENTICE GRAPPLE
\$1,900**



**WAGWAY GRAPPLE
FOR CAT 225
\$7,900**



**LABOUNTY TW120
GRAPPLE
9,900**



**FORKS WITH CLAMP
FOR CAT 966E SIZE
MACHINE - \$4,300**



**FORKS WITH CLAMP
FOR CAT 950 SIZE
MACHINE - \$1,400**



**NEW GRAPPLE FOR
EXCAVATOR
STARTING AT \$3,900**



**NEW STUMP SPLITTER
FOR EXCAVATOR
STARTING AT \$9,900**



**NEW KOBEX SHEAR
\$18,000**



**LABOUNTY MSD220
SHEAR FOR LARGE
EXCAVATOR - \$22,000**



**LOADER RAKE WITH
CLAMP
\$2,300**



**NEW CONCRETE
PULVERIZER FOR
EXCAVATOR
STARTING AT \$9,900**



**LOGGING FORKS
W/CLAMP FOR CAT
966C SIZE MACHINE
\$895**



**ORANGE PEEL
GRAPPLE
\$7,900**

**Call
Eric Ransome
609-778-4020
or
888-726-7863**