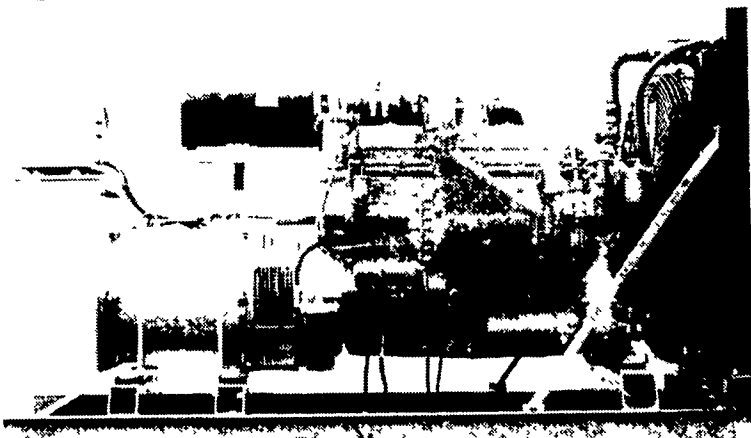


GENERATORS



MARTIN ELECTRIC PLANTS • Manufacturer of:
DIESEL, LP GAS, NATURAL GAS, PTO
Automatic & Manual Start Systems
USED UNITS ALSO AVAILABLE

Call Us For All Your Generator Needs!

MARTIN ELECTRIC PLANTS

280 Pleasant Valley Rd., Ephrata, PA 17522-8620
800-713-7968
Tel: 717-733-7968 Fax: 717-733-1981

LEHIGH AG EQUIPMENT, INC



PRE-OWNED EQUIPMENT

TRACTORS	
JD 6200 OPEN STATION, 2WD, 66 PTO HP	\$20,000
JD 7800 145 HP PTO, 1996, MFWD POWERQUAD	\$59,000
JD 9100, 1382 HRS, 260 HP, 4 SCV, 20 8x38 RADIAL TIRES..	\$78,000
CORN COMBINES/HEADS	
(2) JD 9500 CORN COMBINES, 1994, W/CHOPPER, 1310 SEPARATOR HRS, 1335 SEPARATOR HRS	Choice \$86,000
JD 9500 CONTOUR MASTER, GREEN STAR	\$91,000
JD 6620 TITAN II SIDEHILL DIAL-O-MATIC	\$39,500
JD 215 FLEX HEAD, POLY, DIAL-A-MATIC	\$4,900
JD 216 FLEX HEAD, DIAL-A-MATIC	\$5,495
JD 643 CORN HEAD, OIL BATH, LOW TIN	COMING IN
JD 643 CORN HEAD, OIL BATH, LOW TIN	\$10,900
JD 643 CORN HEAD, OIL BATH, LOW TIN	\$7,900
JD 918 FLEX HEAD, CONTOUR MASTER, HYD FORE & AFT, POLY	\$10,500
JD 915 FLEX HEAD, COMPLETELY REDONE.	CALL
PLANTERS/DRILLS	
JD 450 12 FT, 7 1/2" SPACING, PRESS WHEELS	\$5,500
JD 450 32" FOLDING DRILL, 54 X 7.5	\$14,995 \$10,500
JD 7000, 6 ROW, CONS, DRY FERT, UNIT COULTERS	\$7,000
HAY/FORAGE EQUIPMENT	
JD 1219 MOCO, EXCELLENT ROLLS	\$4,200
JD 2 ROW WIDE CORNHEAD	\$500
TRIUMPH 6 FT SICKLE BAR MOWER, HYD DRIVE	
PTO PUMP W/RESERVOIR	\$995
TILLAGE	
JD 635 DISC 20'9" FOLDING REAR HITCH/HOSES, 22" BLADES.	COMING IN
JD 635 DISC, 20'9" FOLDING, REAR HITCH/HOSES, 24" BLADES	COMING IN
UNVERFERTH ROLLING HARROW, 12' MAIN FRAME 20 FT WING FOLD, PULL TYPE, DOUBLE BASKET, 46" WINGS, DUAL WHEELS EACH SIDE, LIKE NEW	\$4,000
BEAR CAT 12 ROLLER HARROW, EXCELLENT ROLLS	\$2,300
UTILITY VEHICLES	
AMT 622 DUMP KIT	SOLD
	COMING IN
LAWN & GARDEN TRACTORS	
JD 316, 50" DECK, 18 HP, 1990	\$3,399
JD GX70, RIDER w/MULCH KIT	\$895
JD 111 GEAR 38" DECK W/BAGGER	\$599
JD LX176 38" DECK, BAGGER, HYDRO	\$2,499
JD 160 38" DECK	\$849
JD 130 30" DECK, BAGGER	\$995
JD STX38, 5-SPEED, 1994	\$1,299
JD STX46 HYDRO 1997	\$1,999
JD LX172, 14 HP, 38" MOWER	\$1,795
JD GT 242, 38" DECK	\$2,199
KUBOTA T1400H 40" DECK, HYDRO, BAGGER & MULCH KIT	\$1,895
CUB CADET 1105, 11 HP, 36" DECK..	\$895
JD 165 HYDRO, 38" DECK	\$995
JD 185 46" DECK, HYDRO	\$1,499
SIMPLICITY BROADMOOR HYDRO, 38" DECK, MULCH KIT	\$1,295
TROY-BILT MULCHER 13 5 HP, HYDRO	\$1,449
MIDDLEWORTH ZERO TURN MOWER, 46" DECK	\$1,499
WALK-BEHIND MOWERS	
HONDA 215 5HP, 21", HYDRO, REAR BAGGER OR MULCH (LIKE NEW)	\$495
JD 14SZ 21" W/BAGGER	\$449
COMMERCIAL MOWERS	
JD F1145, 72 4WD, DIESEL	\$12,995 \$12,995
SNOWBLOWERS	
SIMPLICITY 820 SNOW BLOWER, 2-STAGE, ELECT START, ALMOST NEW	\$995

Ruppville Road (Off Old 22 near Kuhnsville and Fogelsville), Allentown
HOURS: Mon.-Fri. 7:30 AM to 5:30 PM; Sat. 7:30 AM to 3:00 PM

(610) 398-2553
(800) 779-3616
fax (610) 398-0650



KELLER BROS. KUBOTA

GOOD SELECTION NEW KUBOTA TRACTORS IN STOCK!

FINANCING OR CASH DISCOUNTS AVAILABLE

Kubota TRACTORS & EQUIPMENT

Serving Central PA Since 1921

WE SHIP PARTS UPS

CALL FOR DETAILS ON LEASING

LEBANON	STORE HOURS	LANCASTER
Rt. #7, Box 405, Lebanon, PA 17042 Rt. 419 1 mile West of Schaefferstown 717-949-2000 Or TOLL FREE 1-877-4KUBOTA (458-2682)	MONDAY-FRIDAY 7:30-5:00 SATURDAY 7:30-12:00 2 Locations PILOTS! KELLER BROS. AIRPORT 2550 RUNWAY 600' From Dealership	1950 Fruitville Pike, Lancaster, PA 17601 At Route 30 & Fruitville Pike 717-569-2500 Or Toll Free 877-3KUBOTA (358-2682)

Visit our web site at www.kubotaparts.com • E-mail us at kubota@nbn.net

USED EQUIPMENT - Check for New Additions Weekly

Kubota B2150*, HSD, 24 HP, Turf Tires, Cab, Loader & 60" Mower \$13,500	Kubota B1550*, HSD, 17 HP, 4WD, Hyst Trans, Turf Tires, Q-Tack Loader \$9,975	New Holland TC 33D*, 4WD, Hyst, Supersteer, H D Ind Tires, Loader, H D Loader Bucket, 74 Hrs - CALL
Kubota L245 DT*, 25 HP Diesel, 4WD, STD, 3-Pt., PTO, 586 Hrs A 1 Shape - \$7,450	Kubota B8200 HSD*, 19 HP, Hyst, 4 WD, Low Hrs \$7,950	Kubota B7100 HST* (New Style) 4WD, Hyst, Q-Tack Loader, 60" Mid Mower, Low Hrs Call

TRACTORS: *at Lebanon Store

27180 Kubota B1550 HSDB, 17 HP Diesel, 4WD, Hyst, Bi Speed w/Loader & Hyd Angle Plow, Frt Blade, 37 Hrs	\$13,900
27523 Kubota B1750 HSDB, 20 HP Diesel, 4WD, Turf, Loader & Mower	SOLD \$11,900
27687 Kubota B2150 HSD, 24 HP Diesel, Hyst, 3 Pt., PTO, Loader, Cab w/Heater, 231 Hrs	\$13,975
27875 Kubota B2400 HSD, 24 HP, 4WD, Hyst Trans, 513 Hrs w/Loader & 60" Mower	SOLD \$14,003
27592 Kubota B1750 HSD, 20 HP, 4WD, Hyst Trans, w/Loader & 60" Mid Mower	\$12,400
27540 Kubota F2400, 24 HP Diesel, 4WD, Frt 72" Mower	\$9,495
26940 Kubota L5450 HDT, 60 HP, w/Hyd Shuttle, Ind. Tires, ROPS, Cab w/Heat, A-1 Shape, Low Hrs	\$28,750
26586 Kubota B6000 E, Diesel, w/3 pt. & 48" Mid Mower	\$3,995
27111 Kubota B6100, 14 HP Diesel, 3 Pt., PTO, (A 1 shape)	\$3,995
27475 Kubota B6100 DT, 14 HP Diesel, 4WD, Turf, Frt. Dozer Blade	\$4,995
27721 Kubota B6100 HSE, 14 HP Diesel, Hyst., 3 Pt., PTO, 5' Belly Mower	\$3,995
27681 Kubota B7100 HSD, 16 HP, 4WD, Hyst Trans., Turf Tires, 954 Hrs	\$5,995
24152 Kubota B7100 HSE 2WD, Hyst, w/5' Mid-Mower, 16 HP Diesel	\$5,995
24561 Kubota B7100 HSE, 16 HP, Diesel, Hydro w/48" Mid Mower	\$4,975
26827 Kubota F2000, 20 HP Diesel, 4WD, w/Hyst. Trans., 60" Frt. Mower	\$6,495
24350 Kubota G-4200H 12 HP Diesel, L.G.T. w/44" Mower & Grass Catcher	\$3,495
27103 Kubota G5200H, 14 HP, Diesel, Hyst., Trans., 48" Mower, (Good Cond.)	\$3,895
27607 Kubota T1400 HST, w/40" Mower & Catcher	\$1,495
26275 Ford LGT 14D, 14 HP, Diesel, Hyst, w/Hyd Lift, 48" Mower, Frt. Blade, Trac Vac, 427 Hrs	\$3,995
26275 Ford LGT 146, 14 HP Diesel w/48" Mower, Blade, Vac.	\$3,995
27476 Ford 1620 Diesel, 4WD, Hydro, Turf Tires, 966 Hrs	\$10,500
27535 Ford 145, 14 HP Lawn & Garden, Hyst, Hyd. Lift, 42" Mower, Trac Vac Unit	\$975
27202 Ford 2N, Good Paint, Good Tires, Runs Well	\$2,595
27320 Ford 8N w/3 pt. - P.T.O., Good Rubber, Good Paint	\$3,450
27004 John Deere 214, 14 HP, w/42" Mower	\$1,495
26608 Case "VAC" Restored 1948, New Tires, Painted, Runs Good, PTO, Pulley	\$2,475
27608 Wheel Horse C165 w/48" Mower	\$795
26225 Toro-Wheel Horse 2125 w/38" Mower & Catcher	\$1,495
27125 Toro Wheel Horse 264-6, 14 HP, 42" Mower (Good Cond.)	\$1,450
26625 Snapper Rider, 14HP, w/33" HiVac (Like New)	\$1,295
27391 Bolens C-154, Diesel, 4WD, w/48" Mower	\$2,995
27060 Bolens C154 Diesel, 4WD, w/48" Rear Tiller	\$4,595
27526 Ariens S-12H, w/48" Mower, 2-Stage S Blower	\$1,495
25022 Mitsubishi MT-372, Diesel w/3 Pt & PTO, 48" Mid-Mower, 300 hrs	\$3,900
MOWERS:	
26307 Kubota RC-54-B 54" mower w/Vac Unit (To fit B1550 & B1750)	\$1,195
27674 Kubota K-48 4' Mid Mower to Fit B6100 or B7100 Tractors (Like New)	\$450
27847 Woods RM-360, 3 pt 60" Finish Mower	\$895
27184 Woods RM-48, 4', 3 Pt, Finish Mower	\$650
25180 Woods Rm-48, 4', 3Pt, Finish Mower	\$595
26307 Kubota RC 54-B, 54" Mower w/Turbine Grass Catcher	\$1,195
BLADES:	
23683 Kubota B2030 Frt Dozer Blade w/Hyd Angle & Skid Shoes	\$895
25561 Speeco 5', 3-pt., Rear Blade	\$175
26730 Landpride 5', 3 Pt., Rear Blade	\$195
MISCELLANEOUS:	
27697 Kubota L4530, 3 Pt, 7-1/2' Backhoe w/Pump & Reservoir	\$2,975
27574 Cub Cadet, 5 HP, Rear Tine Tiller	\$495
27452 Brillion, 3 Pt., "64" Seeder (Like New)	SOLD \$1,795
27561 3 Pt. Aerator	\$750
27560 60" 3 Pt. Landscape Rake	\$350
27622 Brinly C-100 Cultivator	\$75
27623 Brinly 10" Sleeve, Hitch Plow	\$75
27100 36" Tow Aerator w/Elect/Hyd Lift	SOLD \$795
26007 3 pt. Snow Blower w/Elect Chute Rotator	\$1,495
Kubota B2650, 50" Frt Mtd Snow Blower to fit B1550, B1750, B2150 (never used)	\$2,100
New Idea 150 bu. PTO Driven Spreader	\$3,000
25598 Maibo Portable Air Compressor (Hi-Volume Output)	\$795
23789 Sears Tow Behind Sweeper 32" Mower, good Shape	\$195
27163 "RE" 7,000 lb. Two Axle Trailer, (very good cond.)	\$1,650
26489 7' 3 pt., PTO Snow Blower, Very Good Cond	\$1,995
27201 Worksaver 48" Forks to attach to Loader Bucket	\$345

KUBOTA GENERATORS IN STOCK