



**BACKHOES**

416B	1992	cab, 4WD, E-stick, 40% tires	\$27,500
416B	1994	cab, 4WD, E-stick, 80% front & 10% rear tires	\$31,500
416B	1996	cab, 4WD, E-stick, 35% tires	\$39,500
416B	1996	cab, 4WD, E-stick, 50% tires	\$38,000
416C	1997	cab, 4WD, E-stick, 20% tires	\$47,500
426	1987	cab, 2WD, E-stick, 15% front & 75% rear tires	\$18,000
426	1987	cab, 2WD, 60% tires	\$22,500
426	1990	cab, 2WD, new NPK H4XE hammer, 60% tires	P.O.R.
426B	1995	cab, 4WD, E-stick, 55% tires	\$45,000
426B	1996	cab, 4WD, E-stick, 70% tires (1 @ 5%)	\$38,500
426B	1996	cab, 4WD, E-stick, 60% tires	\$39,900
446B	1993	cab, 4WD, E-stick, 80% tires, no hammer lines	\$41,000
446B	1993	cab, 4WD, E-stick, 40% tires, no hammer lines	\$41,000

**DOZERS**

D3B	1985	canopy, 70% U/C, 6-way blade	\$37,000
D3B	1986	canopy, 80% U/C, 6-way blade	\$35,000
D3B	1987	canopy, new cat U/C, 6-way blade	\$48,000
D4C	1989	canopy, 60% U/C, 6-way blade	\$42,000
D4H	1987	canopy w/guards, Young grapple, 60% U/C	\$40,000
D4H	1990	canopy w/sweeps, 50% U/C, 6-way blade	\$50,000
D4H	1990	canopy, cab panels, heater, 50% U/C, 6-way blade	\$40,000
D4HLGP	1993	canopy, heater, 35% U/C, 6-way blade	\$49,500
D5C	1993	canopy, 50% U/C, 6-way blade	\$47,000
D5C	1996	canopy, 80% U/C, 6-way blade	\$65,000
D5C	1996	canopy, 50% U/C, 6-way blade	\$55,000
D5HLGP	1986	canopy, 50% U/C, 6-way blade	\$47,000
D6CLGP	1973	canopy, fair U/C, S blade w/tilt	\$29,900
D6DLGP	1985	cab, 40% U/C, 2-way blade	\$44,000
D6H	1987	cab, air, 85% U/C, S blade	\$68,000
D8R	1998	cab, air, 90% U/C, SU blade, 3rd valve	\$360,000

**EXCAVATORS**

312	1994	28,000 lbs., 9'9" stick, 28" pads, 30" & 60" buckets	\$58,500
315L	1997	35,000 lbs. 8'6" stick, 24" pads, 42" bucket	\$99,500
325L	1994	60,000 lbs., 10'6" stick, 32" pads, H140S Cat hammer	P.O.R.
330BL	1997	75,000 lbs., 12'10" stick, 33" pads, 48" bucket	\$215,000
350L	1996	108,000 lbs., 11'10" stick, 36" pads, 52" bucket	\$260,000

**WHEEL LOADERS**

950F	1994	cab, air, Balderson coupler, 3rd valve, 23.5x25 tires @ 90% front & 5% rear	\$66,000
950G	1998	cab, air, GP bucket, 23.5x25 tires @ 100%	\$174,000
980G	1996	cab, air, GP bucket, 29.5-25 tires	P.O.R.

**COMPACTORS**

826C	1994	cab, air, Caron feet @ 90%	\$205,000
------	------	----------------------------	-----------

**SCRAPERS**

627E	1986	cab, push-pull, cushion hitch, air dry 29.5x25 tires @ 20%	\$240,000
627E	1988	cab, push-pull, cushion hitch, air dry, 29.5x25 tires @ 30% front & 95% rear	\$240,000

**CRAWLER GRADERS**

953	1985	cab, GP bucket, 40% U/C	\$58,000
973	1986	canopy, GP bucket, 35% U/C	\$43,000
973	1988	cab, panels, GP bucket, 30% U/C	\$38,000
973	1989	canopy, GP bucket, 45% U/C	\$49,500
977	1973	cab, GP bucket, 45% U/C	\$24,900

**TRUCKS**

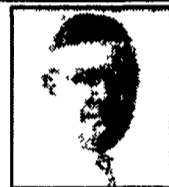
D350E	1997	cab, air, heater, heated dump body, 26.5x25 tires @ 70%	P.O.R.
D350E	1998	cab, air, heater, 26.5x25 tires @ 85% front & 60% rear	P.O.R.

**PAVERS**

AP800	1995	8'-16' screed	\$150,000
-------	------	---------------	-----------

**OTHER BRANDS**

John Deere 555G	1996	cab, panels, GP bucket, 40% U/C	\$47,000
Flat Allis FR20	1983	cab, GP bucket, 26.6x25 tires @ 20% front & 90% rear	\$18,500
I-R DD35	1989	40" double drum, vibratory asphalt roller	\$9,900
I-R SPF56	1980	canopy, 85" pad foot @ 90%, 50% tires	\$24,000
Case 1088	1989	45,000 lbs, thumb on stick, 28" pads, 52" bucket	\$22,000
Gradall G660	1973	diesel-diesel, 50% recapped tires, various buckets	\$7,500
Dynapac CA25	1989	canopy, 84" drum, was pad foot, pads removed	\$25,500



**Tom Rosser**  
215-245-2749  
trosser@ransome.com

Color Photos Available On Our Web Page [www.ransom.com](http://www.ransom.com)

**Darrin Hogeboom**  
215-245-2784  
dhogeboom@ransome.com



**QUALITY**

**VALUE**

**TRUST**



**Gehl 1060 w/Crop Processor**

Excellent condition, metal alert **\$13,500**

Special financing & pricing available due to severe drought Call for details  
Crop processor kits available for Gehl machines  
Gehl late-style corn and grass heads available

**Georgetown Manufacturing**  
Christiana, PA 17509  
610/593-2753

**Martin's Tractor Parts**

866 Greenspring Rd  
Newville, PA 17241

Used Tractors: MM M5 \$2,000, JD 6030 \$10,500, IH 1020, \$700, JD 4020, 71 Model \$8,000, JD 2955 Cab, 4WD, \$20,000; AC 220 \$8,000, JD 530 \$4,300

**Used Tractor Parts**

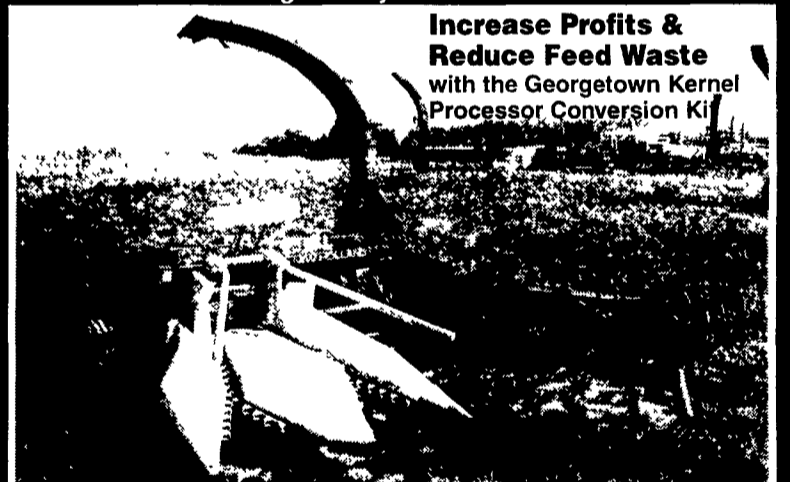
Most Makes and Models Have Large Selection  
Recent Arrivals JD 4440, White 2-105, DB 1200, AC XT190, IH 460; IH 574; Ford 9600, IH 656, JD 3020, JD B, JD 4020, JD 3020, IH 1466, JD 4020, IH 560, JD 4240; IH 1486; JD 3020, MM Jet Star 3; JD 2010, JD 4620; Oliver 77, IH H, MM U; Oliver 1750, IH 656; AC 185; JD 4230, AC 185, AC D17; AC D19; AC 170; Case 970; IH H.

Call (717) 776-7542 or 6057  
(717) 776-7327 Fax  
for detailed information

MON-FRI 8-5 SAT 8-12  
No Sunday Calls Will Ship UPS

**Positively No Out-Of-State Checks**

Now! Process Silage with your New Holland Harvester



**Increase Profits & Reduce Feed Waste**  
with the Georgetown Kernel Processor Conversion Kit

New Holland 900 with Crop Processor and NH 824 Corn Head  
Excellent Condition - \$19,200

NH 900 w/crop processor, metal alert, like new	\$18,750
NH 900 w/crop processor metal alert, excellent cond.	\$17,200
NH 900 w/crop processor	\$14,500
NH 900 w/crop processor, short tongue	\$12,500
JD 3950 w/crop processor, electric controls, excellent cond	Reduced \$14,500
NH 890 w/crop processor	\$10,900
JD 790 w/crop processor	\$13,000
(3) NH 892, rebuilt	\$3,700-\$4,200
JD 3960 excellent condition	\$4,500
NH 770	\$600
Gehl 1250 real good condition	\$2,950
1200 Gehl	<b>SOLD</b>
Gehl 1250 w/crop processor	\$11,500
1 - Gehl 600 with roller miller	\$9,000
Gehl 600 w/crop processor	\$8,500
1 - Gehl 600	\$1,250
1 - JD 3800	\$1,950

**CORN & GRASS HEADS**

2 - 824 NH Cornhead, excellent	\$2,350
1 - NH 360 N3 Cornhead, New	\$8,750
1 - NH 990W Grasshead	\$3,850
NH 939N3 cornhead, excel condior	\$3,500
3-row JD (late model) corn head, completely rebuilt, new gathering belts, grease luber, etc	\$4,500
3-row JD (late model) corn head, exc cond	<b>SOLD</b> \$3,200
880 W grass heads	\$400 to \$700
880 N2 corn heads	\$400 to \$600
2-row Gehl corn head, late style	\$1,450
(2) 3-row Gehl (late style) cornhead	<b>SOLD</b> \$1,950
Gehl (late style) grass head	\$1,250
Brady soybean extruder, excellent condition	\$2,900

Special Pricing and Financing Available Due to Severe Drought  
For Details, Call

Call for current stock & prices on other corn & grass heads  
New Harvester tables in stock, new & used Harvester parts

**GEORGETOWN HYDRAULICS**  
Answering Service  
610-593-2753 8 to 10 A.M.

**USED EQUIPMENT**

- Case 970 w/Loader
- Deutz 470 2WD, Cab
- NH 892 w/3 Row Head & Pickup Hd.
- NH 40 Blower
- NH 939 N4 Corn Head For
- NH 939N4 1900 or 1915
- John Deere Combine 6600 w/Heads
- NH TR96 Combine, 4WD, Low Hrs.
- Woods B320 Mower
- Brillion 10' Turf Seeder
- NH 316 Baler
- NH 855 w/Bale Command
- NH 660 Auto Wrap
- New NH 216 Rake \$13,500
- DA Hay Rake
- Hesston 9' Haybine
- NH 1496 Haybine
- NH 1495 Haybine
- NH 489 Haybine
- Hesston Hydro Discmower

**"Give Us A Try Before You Buy"**

**J. DAVID MULLINIX & SONS, INC.**  
(410) 489-4363 - FAX (410) 489-7634  
14420 Howard Rd., Dayton, MD 21036

**YORK COUNTY FARM EQUIPMENT**

Emigsville, PA

717/764-6412, 717/764-5115

Dealer of new Woods Equipment & Parts



New Delta Gooseneck Trailer 8'x20' w/4' Dovetail & ramps  
HD 3 pt. Hitch for Front Tractor Mount  
Int. 5130 4x4 w/Cab & Air  
MF 250 Diesel  
2600 Ford Diesel, PS  
Int. 574 Gas  
Ford 545A Diesel w/Loader  
Ford 445 Dsl. w/Cab & Loader  
Case 1845 Dsl. Skid Loader  
Case 1816B Gas Skid Loader  
JD 40 w/Loader  
Int. 140 w/Loader w/3 pt  
Int. 140's w/Mid Mowers  
PTO Irrigation Water Pump  
Glenco 6R No-Till Cultivator, Like New  
3 Pt. Flail Mowers  
Used Woods HD 315 Rotary Mower  
New Woods MD 315 Rotary Mower  
Woods Finish & Field Mowers & Snow Blowers in stock

100% Financing Available  
Lowest Prices Guaranteed  
Special 10% Cash Discount  
Woods, Emigsville, PA, AC, PW, Deluxe Interior, Custom Sun Visor, Radial Tires, 67,000 Miles, 24,500 GVW, Purchased New