



AUGUST 16-22, 1999

CAT NIGHTS BEGIN, AUGUST 17.

**SUPPLY AND DEMAND**

August 19 marks the anniversary, in 1856, of Gail Borden's condensed-milk patent. Borden was a dairyman from Norwich, New York, who also made a living as a surveyor. He was the man responsible for laying out the city of Galveston, Texas, where he was also a customs collector. As a dairyman, he had experimented with and developed a process for evaporating milk. Once he got the financial backing of Jeremiah Milbank, he was able to open the Borden Milk Company. Soon after, the Civil War intervened, creating a strong demand for his product, which was of great value to the armies. Later, Borden went on to promote concentrated fruit juices



*I am more of a sponge than an inventor.*

- Thomas Edison

**TIP OF THE WEEK**

For mildly sunburned skin, make a cooling bath with a cup of apple cider vinegar added to tepid water.

**CHOCOLATE CARAMELS**

- 1 can (15 ounces) sweetened condensed milk
- 1 cup light corn syrup
- 1 tablespoon butter
- 1/8 teaspoon salt
- 2 ounces (2 squares) unsweetened chocolate
- 1 teaspoon vanilla extract

235° F on a candy thermometer (soft-ball stage). Stir in remaining milk. Stir in chocolate, a square at a time. Boil until syrup reaches 235° F again. Remove and stir in vanilla. Pour into an 8x2-inch buttered pan. Cool and cut into half-inch squares. Makes 1 pound.



In a 1 1/2-quart heavy saucepan, mix together 1/3 cup of condensed milk, corn syrup, butter, and salt. Cook over medium heat, stirring constantly, until mixture reaches

www.almanac.com

**The OLD FARMER'S WEATHER PROVERBS**



*August sunshine and bright nights ripen the grapes.*

*Grasses of all kinds are loaded with seeds before a severe winter.*

*If the fall apples are one-sided, with thick, rough skins, expect a severe winter.*

*In haying season, when there is no dew, expect rain.*

**New Holland Sales Stables**

Report Supplied By USDA  
Monday, August 9, 1999

	Calves	Sheep	Goats
Today	197	861	1170
Last Week			
	210	815	955
Last Year			
	199	604	1002

CAVES: COMPARED TO THURS.'S AUCTION, VEALERS SOLD 1.00 HIGHER AND SLAUGHTER CALVES TRADED 2.00-5.00 HIGHER. HOLSTEIN BULL CALVES RETURNING TO FEED SOLD 15.00 TO AS 30.00 LOWER THAN THURS.'S ACTIVE MARKET. HOLSTEIN HEIFERS SOLD MOSTLY STEADY IN A LIGHT TEST.

VEALERS: GOOD AND CHOICE 70-110 LBS. 21.00-27.00. STANDARD AND LOW GOOD 60-90 LBS. 11.00-18.00.

SLAUGHTER CALVES: GOOD AND CHOICE 200-350 LBS. 85.00-95.00; 350-550 LBS. 65.00-75.00. STANDARD 300-600 LBS. 55.00-65.00.

RETURNED TO FARM: HOLSTEIN BULLS 95-125 LBS. 95.00-132.00. PLAINER TYPE BULLS 80-115 LBS. 47.00-100.00; 70-85 LBS. 24.00-42.00. HOLSTEIN HEIFERS 80-120 LBS. 200.00-255.00. PLAINER HEIFERS 140.00-195.00.

SHEEP: COMPARED TO THUR., SLAUGHTER LAMBS SOLD STEADY TO 2.00 LOWER. SLAUGHTER EWES TRADED STEADY TO 5.00 LOWER.

SLAUGHTER LAMBS: CHOICE AND

PRIME 2-3 40-60 LBS. 90.00-100.00; 60-110 LBS. 70.00-83.00. GOOD AND CHOICE 1-3 60-120 LBS. 65.00-75.00.

SLAUGHTER EWES: GOOD AND CHOICE YEARLINGS AND 2 YEAR-OLDS 40.00-55.00. UTILITY AND GOOD 1-3 25.00-40.00.

GOATS: BY THE HEAD, LARGE BILLIES 125.00-150.00, MEDIUM 100.00-125.00. THI 75.00-100.00; CHOICE AND PRIME MUTTON 70.00-95.00; LARGE NANNIES 50.00-75.00, MEDIUM 30.00-50.00; CHOICE AND PRIME YEARLINGS 60.00-90.00; CHOICE AND PRIME KIDS 40.00-70.00. GOOD 20.00-40.00.

FEEDER CATTLE: STEERS 275 LBS. 67.50; 410 LBS. 69.75; HEIFERS 165 LBS. 57.00; 300-435 LBS. 62.50-64.00.

CALVES: GOOD 85-95 LBS. 60.00-70.00; STANDARD AND GOOD 80-90 LBS. 45.00-58.00; UTILITY 70-80 LBS. 20.00-30.00.

FARM CALVES: #1 95-115 LBS. 116.00-139.00, #2 95-115 LBS. 75.00-110.00.

HOLSTEIN HEIFERS #1 80-120 LBS. 152.50-215.00; #2 80-120 LBS. 77.50-150.00.

BEEF TYPE BULLS AND HEIFERS 80-115 LBS. 72.00-128.00.

HOGS: 40-45% 230 LBS. 35.25.

SOWS: US#1-3 495-538 LBS. 22.00.

BOARS: 240-265 LBS. 10.00-12.00, 510-820 LBS. 6.00-6.25.

SLAUGHTER SHEEP: 115 LBS. 30.00.

**Lebanon Valley Livestock**

Fredericksburg, PA  
August 10, 1999

Report Supplied by Auction

STEERS: CHOICE 2-3 1210-1560 59.75-62.50; SELECT 1-3 55.00-58.50; STANDARD 1-2 48.50-52.25.

HOLSTEIN STEERS: CHOICE 2-3 1240-1460 LBS. 56.25-58.50; SELECT 1-2 52.50-55.00; STANDARD 1-2 46.50-52.00.

HEIFERS: CHOICE 2-4 1195-1360 LBS. 63.00-64.00; SELECT 1-3 56.00-58.50; STANDARD 1-2 51.75.

COWS: BREAKERS 75-80% LEAN 42.50-45.00; BONERS 80-85% LEAN 40.25-42.00; LEAN 85-90% LEAN 38.50-40.00; SHELLS DOWN TO 32.25-37.00.

BULLS: YG#1 1820-1940 LBS 49.00-50.25; YG#2 1255-1835 LBS. 41.50-44.25.

**North Jersey Livestock**

Hackettstown, NJ

Report Supplied by Auction  
Tuesday, August 10, 1999

CALVES .02-.290.  
COWS .06 1/2 -.44 1/2 .  
EASY COWS .05-.33% .  
FEEDERS 300-600 LBS. .25-.81.

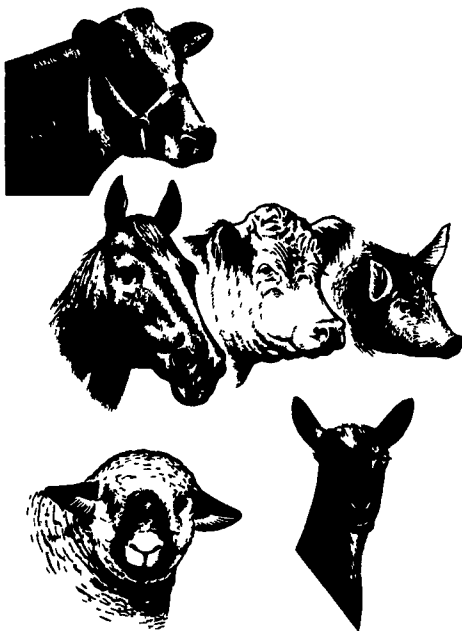
HEIFERS .14-.54% .  
BULLS .29-.62.  
STEERS .39-.65% .

HOGS, NONE.  
ROASTING PIGS EACH, NONE.  
BOARS, NONE.

SOWS, NONE.  
SHEEP .16-.47.  
LAMBS, EACH 20.00-72.50.  
LAMBS, PER LB. .35-1.17.

GOATS, EACH 37.00-175.00.  
KIDS, EACH 12.00-87.50.  
951 TOTAL.

**Free Enterprise...**



Two words that business people around the world take very seriously. Members of the Pennsylvania Livestock Auction Association take free enterprise very seriously too. They realize that producers have a choice when it comes time to buy and sell livestock and they are dedicated to making sure that producers can take advantage of the free enterprise system in the best way possible... at the local auction market.

Pennsylvania livestock markets strive to provide you with the kind of service you deserve as a business person and a friend. You can be assured that the honesty, integrity and solid marketing fundamentals found at your local market will ensure nothing less than the true market value for your livestock.

**PA LIVESTOCK AUCTION ASSOCIATION MEMBERS**

**Belleville Livestock Market, Inc.**  
570-935-2146  
Belleville

**Eighty-Four Auction Sales, Inc.**  
412-222-9965  
Eighty-Four

**Middleburg Auction Sales, Inc.**  
570-837-2222  
Middleburg

**Dewart Livestock Market, Inc.**  
570-538-9835  
Dewart

**New Holland Sales Stables, Inc.**  
717-354-4341  
New Holland

**Pennsylvania Livestock Auction, Inc.**  
412-627-9585  
Waynesburg

**Jersey Shore Livestock, Inc.**  
570-398-0111  
Jersey Shore

**Greencastle Livestock Market, Inc.**  
717-597-2171  
Greencastle

**Lancaster Stockyards, Inc.**  
717-394-2619  
Lancaster

**Leesport Farmers Market, Inc.**  
610-926-1307  
Leesport

**Mercer Livestock Auction, Inc.**  
412-662-2910  
Mercer

**New Wilmington Livestock Auction, Inc.**  
412-946-2921  
New Wilmington

**Union City Livestock Auction**  
814-438-3481  
Union City

**Carlisle Livestock Market, Inc.**  
717-249-4511  
Carlisle

**Valley Stockyards, Inc.**  
570-888-9333  
Athens

**Meadville Livestock Auction**  
814-763-2240  
Conneautville

**Morrison Cove Livestock Auction**  
814-793-2311  
Claysburg

**McElwee's Livestock**

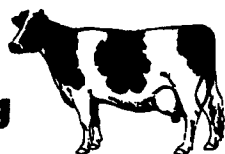
Home of Shippensburg Cownet  
3 Locations To Serve You



**Newburg** Mon. 9-4, Thurs. 9-2  
(717) 423-6869

**Woodsboro, MD**  
Tues. 9-2  
(301) 845-6232

**Chambersburg**  
Wed. 9-3  
(717) 267-3321



Receiving All Cows, Bulls, Steers, Calves  
Call For Daily Price Quotes