

Delmarva Broiler

ATLANTA, GA.
AUGUST 11, 1999

DELMARVA BROILER/FRYER MARKET. FEDERAL-STATE

Movement of ready-to-cook whole birds remained good and was sufficient to keep the bulk of offerings well cleared to short of inquiry, particularly on the larger sizes. Live supplies were mostly moderate; weights were mostly desirable to light. Processing schedules were moderately heavy. Less than trucklot asking prices were 1 cent higher at 51 to 63 cents. Trade sentiment was fully steady to firm. In the parts complex, sentiment was steady to firm, but was also cautious in some instances. Breast cuts were in short supply. Leg items were adequate to closely cleared. Wings were at least adequate.

ESTIMATED SLAUGHTER OF BROILER/FRYERS IN DELMARVA (000)
ESTIMATED ACTUAL AVG. WEIGHT
ACTUAL AVG. WEIGHT 08/11 08/09
08/09 08/04 08/02

2,444 2,436 4.99 2,456 4.96

*BROILER/FRYER CURRENT NEGOTIATED PRICES FOR IMMEDI-

ATE DELIVERY INCLUDES MOSTLY MULTIPLE-DROP SHIPMENTS OF BRANDED AND WING TAGGED TO NEW YORK CITY FROM DELMARVA BRANDED U.S. GRADE A RANGE 47-71 WEIGHTED AVERAGE 53.30 NO. OF BOXES 6,897 *6 of 8 plants reporting.

Morrison's Cove Livestock, Poultry & Rabbit Report

Martinsburg, Pa.
August 9, 1999

Report Supplied by Auction
ROOSTERS: 2.00-6.00.
HEAVY HENS 1.00-3.50.
BANTAMS .50-4.00.
GEESE 2.25.
GUINEAS KEETS .70-.90.
PIGEONS 1.95-2.90.
DUCKS 1.75-3.00.
BUNNIES 1.00-2.50.
RABBITS 3.00-5.25.
DOVES 3.25.
BANTY FAMILY 4.00-6.75.
AUCTION EVERY MON. 7:30 P.M.

E PA & NJ

Poultry

ATLANTA, GA.
AUGUST 09, 1999

SOUTHEAST HEAVY LIVE HEN REPORT, AUGUST 9, 1999. FEDERAL-STATE

Majority trading was unchanged to slightly lower when compared to a week earlier. Demand was light to moderate. Offerings were fully adequate to ample. Undertone was cautiously steady.

HEAVY TYPE HENS (7 POUNDS AND UP) *

FINAL PRICE, CENTS PER LB., GENERALLY FOR SLAUGHTER THE WEEK OF 09-AUG-99

RANGE MAJORITY WTD AVG AT FARM BUYER LOADING 10-18.5 CENTS/LB. 15-17 15.43 AT FARM PRODUCER LOADING TOO FEW TO REPORT FOB PLANT TOO FEW TO REPORT

* WEIGHTS UNDER 7 LBS. SUBJECT TO DISCOUNT.

NE Chicken

Parts 1&2

ATLANTA, GA.
AUGUST 12, 1999

NORTHEAST BROILER/FRYER PARTS - PART I FEDERAL-STATE

Trucklot buying interest continued to decrease in light of some reported supply inadequacies. Offerings were generally closely balanced with needs, however breast items became increasingly difficult to obtain. Retail and distributive movement was mixed as promotional activity was scattered with consumer buying irregular. The market tone continued strong on limited supplies of breast items and generally steady to fully steady on the balance.

PRICES PAID PER POUND, ICE PACKED AND CO2 PACKED BROILER/FRYER PARTS, DELIVERED TO FIRST RECEIVERS IN POOL TRUCKLOT AND TRUCKLOT QUANTITIES.

ITEM CURRENT NEGOTIATED TRADING*

BREAST - B/S 165-170 TENDER-LOINS 130-135 BREAST - WITH RIBS 74-75 BREAST - LINE RUN 74 LEGS

28-29 LEG QUARTERS (BULK) 18-19 DRUMSTICKS 31-32 THIGHS 18-19 B/S THIGHS 70-71 WINGS (WHOLE) 45-46 BACKS AND NECKS (STRIPPED) 10-12 LIVERS (5 POUND TUBS) 35-40 GIZZARDS (HEARTS) 40-45

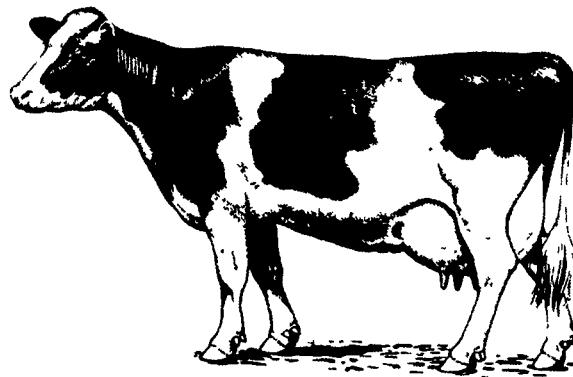
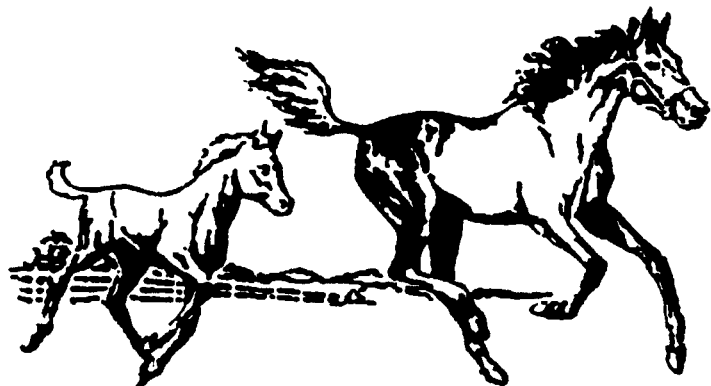
INCLUDES NEW YORK CITY METROPOLITAN AREA, NORTHERN NEW JERSEY, MASSACHUSETTS, CONNECTICUT, RHODE ISLAND, AND PENNSYLVANIA (NORTHEAST OF HARRISBURG). * TODAY'S NEGOTIATED SALES AS OF 11:30 A.M.



VISIT PENNFIELD FEEDS

AG PROGRESS DAYS

AUGUST 17, 18, 19 - DAIRY & LIVESTOCK TENT



HORSE FEEDS

- PERFORMANCE HORSE FEEDS
- BROODMARE/YEARLING FEEDS
- FOAL FEEDS
- SENIOR HORSE FEEDS
- PLEASURE HORSE FEEDS
- FEEDS WITH HIGH FAT
- FEEDS WITH SHREDDED BEET PULP

DAIRY FEEDS

- CUSTOM FORMULATED LACTATING RATIONS
- SUPER FLAKED GRAINS
- DAIRY RATIONS WITH WHOLE COTTON SEED
- PRE-POST FRESH FEEDS
- SUPER PALATABLE CALF STARTERS
- HEIFER GROWER WITH BOVATEC®
- ALL MILK MILK REPLACERS



**STOP BY AND SIGN UP FOR OUR
FREE FEED DRAWINGS
NEW WINNERS EVERY DAY**



**Round the Clock
Customer Service**

1-800-995-0333

www.dairyfeed.com

