

Day, Lawrence Top Limousin Show

LAWTON, Okla. — Doug Satter of Montague, Texas evaluated the competitive Limousin steer show conducted during the National Junior Limousin Show and Congress in Lawton, Okla. Dakota Day of Castalia, Ohio

took the purple banner in the progress steer show. Day's Class 5 winning steer is a 4/15/98 three-quarter blood son of Mr. SY Chevy 502B that weighed 1,270 pounds and measured 53.5 inches at the hip.

Jessica Smit of Lennox, S.D., showed the reserve champion progress steer with the Class 3 winner, a 3/20/98 purebred son of SLVL Stout. He stood 52.75 inches tall and weighed 1,119 pounds.

Lee Roy Lawrence of Anton, Texas claimed grand champion prospect steer honors. His 8/22/98 purebred son of TYRE Dean weighed 821 pounds, measuring 50.25 inches tall. Lawrence's steer had previously won Class 4, en route to the championship.

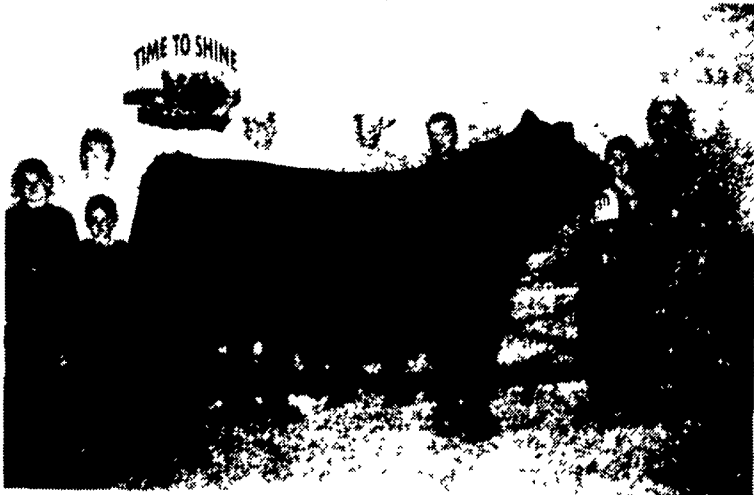
Taylor Maddox of Maryneal, Texas exhibited the reserve champion prospect steer with an 8/20/98 purebred son of Maverick HCJS 675A, measuring 49.25 inches and weighing 880 pounds. Maddox's steer stood second in a very competitive Class 4 to the eventual champion prospect steer.

Class winners in the progress steer show included Melissa Finnell of Gravette, Akr. Her 3/15/98

seven-eights son of Wulfs Rambler weighing 1,014 pounds took top honors in Class 1. Travis Lehman of Vernon, Texas led the Class 2 winner with a 1,080-pound son of EXLR Next Step, born 7/25/98. Erica Vorthman of McClelland, Iowa was at the halter of the Class 4 winning entry. Her 3/31/98 purebred son of MINE 008E weighed 1,256 pounds.

Prospect show class winners in-

cluded Kevin Middleton of Damascus, Ark. His winning entry in Class 1 is a 12/01/98 three-quarter blood, 652-pound son of FTL 172E. Montana Day of Castalia, Ohio took top honors in Class 2 prospect steers with an 11/23/98 purebred son of SLVL DVFC Planet Hollywood weighing 709 pounds. Barry Hanza of Lawton, Okla. campaigned the top steer in Class 3 with a 9/12/98 halfblood son of CHR Red Eye.



Champion progress steer at the National Junior Limousin Show and Congress was Dakota Day of Castalia, Ohio.



Where's your mustache?™

MARSHALL RYEGRASS

The Leader in Yield and Cold-Weather Tolerance!

Dairy producers report increased milk production when using Marshall Ryegrass over other winter forages. In addition, dairy & cattle producers report Marshall Ryegrass produces rich, green winter grazing much longer than other varieties - starts earlier in the fall and continues to give hearty grazing deep into spring.

In Cold Weather tests from agricultural universities that included all leading annual ryegrass varieties, Marshall ranked #1 for winter hardiness in 22 out of 24 tests.

FOR MAXIMUM PRODUCTION OF MARSHALL RYEGRASS

General Practices:

- ✓ If planted in autumn, allow first growth to obtain 8"-10" in height.
- ✓ Leave grass at 3"-4" so it will recover 50% faster.
- ✓ If cutting for hay, cut at a 3-inch height rather than the 1/2 inch height for Kentucky 31.
- ✓ If cutting for silage, cut at a 3-inch height rather than the 1/2 inch height for Kentucky 31 grass mixture.

Grazing: Overgrazing in the fall may reduce production in the spring when your cows need it most for milk production and rebreeding. Do not let winter annual pasture varieties get below three inches. And be cautious of undergrazing since it often results in lower nutrient values. Excessive accumulation of winter legume growth may often result in more winterkill.

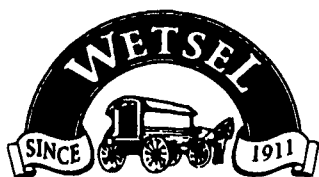
Planting Information For Marshall Ryegrass

Although conditions and methods vary from area to area, chiseling followed by disking generally prepares a good seedbed for most winter annual programs. It is best to eliminate surface vegetation and breaks up clods into a firm smooth seedbed. It is important that the seed come into contact with soil and receive sufficient light for seedling development.

Seeding: A pasture seeder or grain drill does the best job and lets you cut the broadcast seeding rate by a third to a half. Generally, your planting should be shallow, not more than a 1/4" to 1/2". It is important to firm the seedbed with a cultipacker or seed with a pasture seeder with a cultipacker attachment. **Plant 25-30 lb. per acre.**

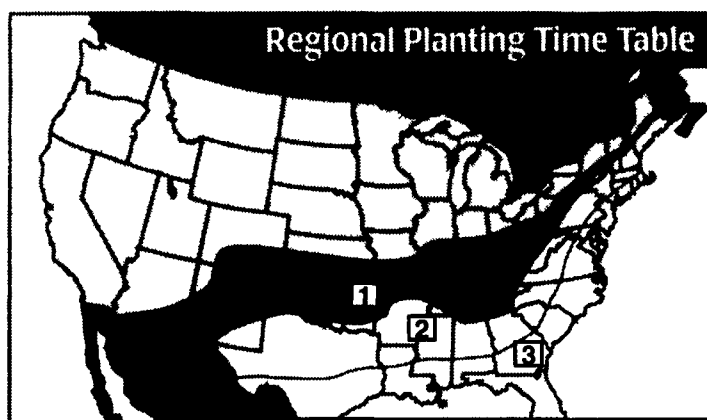
Fertility: Fertilizer and lime according to soil test recommendations.

Distributed by Wetsel, Inc.
Harrisonburg, VA



WETSEL, INC.
Your supplier of fine farm seeds

Marshall... America's #1 Ryegrass!



1 Aug. 1-Oct 20 2 Aug. 15-Nov. 10 3 Sept 15-Nov. 15

These are approximate dates. See your local county extension office for local planting information

Available from your local seed dealer.

Call: Jim Waid
1-800-572-4018

Or: Bob Wetsel
1-800-527-4018

For proven results with Marshall Ryegrass, please call the dairyman/dealer nearest you

BUY,
SELL,
TRADE
OR
RENT
THROUGH
THE
CLASSIFIED
ADS
IN
Lancaster
Farming

PHONE
717-626-1164
OR
717-394-3047

FAX
717-733-6058



Mon., Tues.,
Wed., Fri.
8 AM to 5 PM
Thurs.
7 AM to 5 PM

