

**Middleburg Livestock Auction**

Middleburg, Pa.  
August 3, 1999

Report Supplied By PDA  
SALE NOT REPORTED AUGUST 10 1999 VINTAGE LIVESTOCK AUCTION FOR MONDAY TUESDAY AUGUST 9 & 10 1999

CATTLE		
CALVES	SHEEP	GOATS
TUESDAY	1046	
860 14 3		
LAST WEEK	950	
816 13 1		
LAST YEAR	532	
766 0 0		

**Belleville Livestock**

Belleville, Pa.

Wednesday, August 11, 1999

Report Supplied By PDA  
CATTLE 356 [SUPPLIED BY THE AUCTION] HEIFERS Select 1 3 42.00-48.00 SLAUGHTER COWS Breakers 75 80% lean 42.00-46.50, Boners 80-85% lean 36.75-41.50, Lean 85-90% 28.00-36.50 Shells down to 10.00 BULLS Yield Grade 1 1100-1900 lbs 41.00-46.00 CALVES 84 VEALERS Standard and Good 85-100 lbs 22.00-25.00, Utility 70-85 lbs 12.00-21.00 FARM CALVES No 1 Holstein bulls 95-115 lbs 80.00-120.00, No 2 90-120 lbs 45.00-88.00 HOGS 35 SOWS US 1-3 400-600 lbs 18.00-21.00 FEEDER PIGS 154 US 1 3 30-50 lbs 8.00-17.00 - - per head SHEEP 28 SLAUGHTER LAMBS Choice 40 70 lbs 66.00-77.00, Good and Choice 75-90 lbs 64.00-68.00 SLAUGHTER SHEEP 28 00 44.00 GOATS 23 Large Billies 89.00-94.00, Medium 70.00-88.00, Large Nannies 50.00-60.00, Large Kids 25.00-47.00, Small 12.00-24.00 per head

**Four States Livestock**

Hagerstown, Md.  
August 11, 1999

Report Supplied By Auction  
SLAUGHTER COWS: 123 HEAD, MOSTLY STEADY SPOTS, 1.00 LOWER. UTILITY 37.00-41.00; HIGH DRESSING 41.50-43.75; CANNERS 33.00-37.00, SHELLY 32.00 DOWN. BULLS: 14 HEAD, GOOD DEMAND. YG#1 1450-1950 LBS. 47.00-50.75; 1 HIGH DRESSING 1790 LBS. A5 57.00; YG#2 43.00-46.00. FED STEERS: 30 HEAD. HIGH CHOICE #2-4 1100-1450 LBS. 65.00-67.25; CHOICE #2-3 62.00-65.75; LOW CHOICE 1050-1350 LBS. 59.00-61.75. FED HEIFERS: 9 HEAD. 1 HIGH CHOICE #2 1150 LBS. AT 63.50, 1 CHOICE #4 AT 57.75. CALVES: 148 HEAD. CULLS 85-110 LBS. 24.00-29.00, FEW TO 34.00, 60-80 LBS. 18.00-25.00, THIN AND ROUGH 17.00 DOWN. HOLSTEIN BULLS RETURNING TO FARM #1 95-120 LBS. 90.00-112.00, FEW TO 122.00; 88-95 LBS. 40.00-65.00, #2 90-110 LBS. 50.00-90.00, HOLSTEIN HEIFERS #1 95-120 LBS. 200.00-260.00, 1 FANCY AT 300.00; BEEF X BULLS 85-120 LBS. 90.0-117.00; BEEF X HEIFERS 80-115 LBS. 40.00-87.00. BUTCHER HOGS: 20 HEAD. #2-3

220-250 LBS. 33.50-35.75; 1 325 LBS. AT 20.50.

SOWS: 16 HEAD. 300-400 LBS. 14.00-19.00; 400-500 LBS. 15.00-20.00, THIN 12.00-15.00.

STOCK CATTLE: 329 HEAD. STEERS MED. AND LARGE FRAME 200-400 LBS. 75.00-90.00, 5 HEAD TO 108.00; 400-600 LBS. 75.00-88.00, 600-800 LBS. 64.00-73.50; 800-1000 LBS. 57.00-64.00.

HEIFERS: MED. AND LARGE FRAME 200-400 LBS. 70.00-85.00, 1 AT 94.00; 400-500 LBS. 74.00-87.00; 500-600 LBS 65.00-76.00, 2 AT 81.00, 600-800 LBS. 62.00-69.50.

BULLS: MED. AND LARGE FRAME 200-400 LBS. 74.00-93.00, 400-500 LBS. 71.00-85.00; 500-600 LBS. 65.00-77.00, 600-800 LBS. 53.00-59.00.

DAIRY REPLACEMENTS: 9 HEAD. LARGE SPRINGERS 935.00-1240.00; HOLSTEIN BULLS 1085 LBS. AT 53.50; 1 854 LB. AT 45.00; SMALL HOLSTEIN HEIFERS 170.00-355.00.

SHEEP: 22.00-46.00. LAMBS: 23 HEAD. HIGH CHOICE TO PRIME 100-130 LBS. 66.00-69.00; GOOD TO CHOICE 70-100 LBS. 68.00-69.00; 1 60 LB. AT 74.00.

GOATS: LARGE WETHER AT 63.00; MEDIUM 36.00-49.00; SMALL 15.00-25.00.

PIGS AND SHOATS: 28 HEAD MAINLY CULLS. BY THE HEAD, 1 LOT 40 LBS. AT 12.00; BY THE LB. 1 STOCK BOAR 286 LBS. AT 41.00.

**Frederick Livestock Auction**

Frederick, Md.  
August 9, 1999

Report Supplied By Auction  
SLAUGHTER COWS: 98 HEAD, 1.00-2.00 HIGHER. UTILITY 37.50-42.00; HIGH DRESSING 42.00-45.50; CANNERS 32.50-37.00; SHELLY 32.00 DOWN. BULLS: 1 HEAD. YG#2 2090 LBS. AT 48.25.

FED STEERS: 1 SELECT BLK. 1015 LBS. AT 56.50; LOW CHOICE HOLSTEINS 1600-1750 LBS. 47.00-49.75; 1 1190 LBS. AT 47.50.

FED HEIFERS: LOW CHOICE HOLSTEINS 1365-1680 LBS. 46.50-47.00. VEAL CALVES: 231 HEAD. LOW CHOICE 225-350 LBS. TO 70.00; CULLS 85-110 LBS. 24.00-30.00, 60-85 LBS. 18.00-25.00.

FARM CALVES: HOLSTEIN BULLS MOSTLY STEADY, SPOTS LOWER. #1 100-120 LBS. 95.00-112.00; 95 LBS. 85.00-97.00; 90 LBS. 40.00-70.00; 80-85 LBS. 30.00-45.00; HOLSTEIN HEIFERS #1 90-120 LBS. 225.00-292.00; #2 140.00-200.00; #1 75-90 LBS. 140.00-180.00, #2 60.00-130.00; BEEF X BULLS AND HEIFERS 62.00-97.00.

BUTCHER HOGS: 32 HEAD, 5.00 HIGHER. #1&2 260-270 LBS. 35.00-36.50; 270-280 LBS. 33.00-35.00. STOCK CATTLE: STEERS DAIRY X 400-700 LBS. TO 67.00.

HEIFERS: 300-500 LBS. 65.00-75.00; HOLSTEINS 300-350 LBS. 115.00-117.00; HOLSTEIN X 260-290 LBS. 84.00-86.00.

BULLS: 250 LBS. 84.00-91.00. DAIRY REPLACEMENTS: 1 HOLSTEIN FRESH 745.00; 1 JERSEY SPRINGER 460.00.

LAMBS: PRIME 80-100 LBS. 71.00-76.00; 1 GOOD 30 LBS. 85.00. GOATS: 1 LARGE AT 74.00; MED. 47.00-56.00.

**Greencastle Livestock**

Greencastle, Pa.  
August 9, 1999

CATTLE 647...PDA...SUPPLY INCLUDED 196 SLAUGHTER STEERS AND HEIFERS, 302 SL. COWS, 25 BULLS AND 124 FEEDER CATTLE. SLAUGHTER STEERS: HIGH CHOICE AND PRIME 2-4 1250-1400 LBS. 67.50-69.00, FEW TO 70.00, CHOICE 2-3 1100-1400 LBS. 60.00-66.50, SELECT 1-3 58.50-63.00, STANDARD 1-2 45.00-53.00.

HEIFERS: HIGH CHOICE AND PRIME 2-4 1100-1300 LBS. 64.50-67.00, CHOICE 2-4 1050-1300 LBS. 59.00-64.00, SELECT 1-3 56.00-61.00, STANDARD 1-2 40.00-51.00.

SLAUGHTER COWS: BREAKERS 75-80% LEAN 38.00-44.50, BONERS 80-85% LEAN 33.00-39.50, LEAN 85-90% LEAN 28.00-34.00. SHELLS DOWN TO 20.00.

BULLS: YG#1 1000-1950 LBS. 48.00-53.25, YG#2 950-2000 LBS. 41.00-48.00.

FEEDER CATTLE: STEERS MED. AND LARGE 1 200-300 LBS. 65.00-91.00, 300-500 LBS. 60.00-85.00, 500-700 LBS. 51.00-73.00; HEIFERS MED. AND LARGE 1 200-400 LBS. 75.00-115.00, FEW DOWN TO 60.00, 400-600 LBS. 53.00-77.50, 600-800 LBS. 50.00-81.00; BULLS ALL WEIGHTS 70.00-105.00.

CALVES: 540...VEALERS STANDARD AND GOOD 75-110 LBS. 11.00-22.00, UTILITY 50-90 LBS. 5.00-19.00.

FARM CALVES: #1 HOLSTEIN BULLS 90-120 LBS. 95.00-135.00, #2 85-115 LBS. 50.00-100.00; #1 HOLSTEIN HEIFERS 75-110 LBS. 225.00-350.00, #2 85-90 LBS. 100.00-210.00.

BEEF TYPE BULLS AND HEIFERS 75-120 LBS. 80.00-115.00.

HOGS: 44...BARROWS AND GILTS 45-50% LEAN 220-275 LBS. 33.00-36.50. SOWS: US#1-3 300-500 LBS. 19.00-24.00, 500-650 LBS. 22.00-28.00.

FEEDER PIGS: 0...NO MARKET TEST!

SHEEP: 89...SLAUGHTER LAMBS CHOICE 30-50 LBS. 75.00-90.00, 70-100 LBS. 65.00-77.00.

SLAUGHTER SHEEP: 19.00-38.00.

GOATS: 39...ALL BY THE HEAD, LARGE BILLIES 95.00-145.00, MED. 35.00-65.00, LARGE NANNIES 40.00-64.00, MED. 30.00-55.00, LARGE KIDS 20.00-45.00, SMALL 16.00-22.00 PER HEAD.

**Aberdeen Sales Company, Inc.**

Complete Auction & Appraisal Service  
Churchville, Md.

Report Supplied by Auction  
Wednesday, August 11

SLAUGHTER STEERS: STEADY. CHOICE 2-4 1100-1400 LBS. 65.50-68.50; SELECT & LOW CHOICE 1000-1500 LBS. 58.00-63.00; HOLSTEINS HI CHOICE & PRIME 1250-1400 LBS. 59.00-61.00; CHOICE 1200-1500 LBS. 55.00-59.00; SELECT, ALL WEIGHTS, NONE.

SLAUGHTER HEIFERS: STEADY. CHOICE & PRIME 950-1300 LBS. 64.00-67.00; SELECT ALL WEIGHTS 900-1400 LBS. 52.00-59.00.

COWS: 1.00 LOWER. BRK. UT. & COMM. 2-4 BULK 39.00-43.00; HI DRESSING 43.00-45.00; CUTTER & BON. UT. 36.00-39.50; HI DRESSING 39.50-42.00; CANNER & CUTTERS

31.00-36.00; LOW DRESSING 30.00 DOWN.

BULLS: 1.00 LOWER. ALL WEIGHTS 1100-1900 LBS. 43.00-56.00.

VEAL CALVES: 2.00 LOWER. CHOICE AND PRIME 200-400 LBS. 73.00-80.00; HI GOOD AND LOW CHOICE ALL WEIGHTS 54.00-69.00.

FARM CALVES: STEADY. HOL. BULLS 100-125 LBS. 110.00-132.00, HOL. BULLS 85-95 LBS. 65.00-95.00; HOL. HEIFER CALVES 100-120 LBS. 220.00-265.00; SMALL FRAME 70-105 LBS. 90.00-130.00; SLAUGHTER CALVES ALL WEIGHTS 15.00-30.00.

FEEDER CATTLE: 5.00 LOWER. BULLS & STEERS 400-900 LBS. 54.00-83.00; HEIFERS 300-700 LBS. 47.00-65.00.

LAMBS: STEADY. CHOICE & PRIME 90-110 LBS. 67.00-73.00; LIGHTER LAMBS 85.00-100.00; EWES - HEAVY 24.00-31.00, LIGHT 31.00-45.00.

GOATS: STEADY. SMALL 25.00-35.00; MEDIUM 40.00-65.00; LARGE 90.00-115.00.

HOGS: 3.00 HIGHER. 210-250 LBS. 33.00-37.00; 255-300 LBS. 31.00-36.00; SOWS - HEAVY 20.00-29.00; SOWS-LIGHT 15.00-23.00; BOARS ALL WEIGHTS 7.00-10.00.

**Central Carlot Beef Report**

Des Moines, IA  
Wed Aug 11, 1999

USDA Market News  
USDA NATIONAL CARLOT BEEF REPORT (includes major production areas in the Midwest and TX) as of 3:00 PM COW & BULL CARCASS FOB OMAHA Loads Reported. Compared to Tuesday's 3:00 P.M. report: Cow and bull carcasses not established.

UT,brk 2-4 450#/up unq UT,bng 1-3 400#/up unq Cutter 1-2 350#/up unq Bulls YG 1 500#/up unq

COW & BULL CARCASS CAF WEST COAST Loads Reported. Compared to last week:

Market for Week Ended: August 6, 1999 Lds Price Range UT,brk 2-4 450#/up UT,bng 1-3 400#/up 74.00 Cutter 1-2 350#/up 74.00 Bulls YG 1 500#/up

BONELESS PROCESSING BEEF/ BEEF TRIMMINGS 196.0 Loads Reported. Lean boneless processing beef 6.50-7.00 lower; 85% generally steady to 2.00 lower; 75% 1.00 higher; 65% mostly steady with instances 2.00 lower. Demand light to moderate for moderate to heavy offerings. Beef trimmings higher on fairly good demand and light to moderate offerings. FOB OMAHA BASIS: Chm Ln Lds Price Range Wtag 90% fr 18 100.0 - 105.5 102.17 90% fz unq 85% fr 12 94.0 - 99.0 97.00 85% fz 75% fr 8 76.0 - 77.0 76.63 75% fz 65% fr 13 60.0 - 64.0 62.92 65% fz 50% fr 116 45.50 - 48.00 46.76 50% fz unq 50% bx unq Bull 92-94 unq

FOB EAST TEXAS AND OKLAHOMA: Chm Ln Lds Price Range Wtag 90% fr 24 101.0 - 104.5 102.27 90% fz unq 85% fr 85% fz 75% fr 75% fz 65% fr 65% fz CAF NORTHEAST AREAS: Chm Ln Lds Price Range Wtag 90% fr 5 104.0 104.00 90% fz unq 85% fr unq 85% fz 75% fr 75% fz 65% fr 65% fz

CAF WEST COAST BASIS Market for Week Ended: 8/6/99 Chm Ln Lds Price Range Wtag 90% fr 106.00 -112.00 110.20 90% fz 113.00 -115.00 114.00 85% fr 97.00 -104.00 101.18 85% fz unq 75% fr unq 75% fz unq 65% fr 61.00 - 62.50 62.22 65% fz 50% fr 38.00 - 40.50 39.57 50% fz unq

\*\*ABCDE after quotes represents days since last actual market test. Quotes are dropped after 5 days of no test or before if they no longer reflect current market conditions.\*\*

**Carlisle Livestock**

Carlisle, Pa.  
August 10, 1999

Report Supplied By Auction  
SLAUGHTER CATTLE: STEERS, MOSTLY HOLSTEIN X OFFERED. CHOICE 55.00-57.00; SELECT 52.00-54.75.

COWS: BREAKERS 40.00-42.50, BONERS 35.00-42.00; LEAN 33.00-38.00; COUPLE LOW DRESSING DOWN TO 29.50; SHELLEY 28.00 AND DOWN.

BULLS: YG#1 NONE OFFERED, YG#2 1 AT 1560 LBS. 39.25.

FEEDER CATTLE: HEIFERS 400-600 LBS. 64.00-77.00, 650-900 LBS. 54.00-66.00; BULLS 600-850 LBS. 53.00-58.00; CALVES RETURNING TO FARM, HOLSTEIN BULLS #1 95-125 LBS. 109.00-126.00, HOLSTEIN HEIFERS #1 70-145 LBS. 100.00-260.00; BEEF X HEIFERS 95-110 LBS. 100.00.

SWINE: HOGS US#1-3 220-270 LBS. 38.50-39.00, SOWS US#1-3 300-600 LBS. 20.00-28.00, THIN/WEAK/ROUGH TO 19.50; FEEDER PIGS BY THE HEAD, 15-25 LBS. 17.00-21.00, 100-130 LBS. 35.00-37.50.

GOATS: BY THE HEAD, LARGE NANNIES AND BILLIES 85.00-136.00 FLESHY KIDS 36.00-58.00; SMALL/ THIN KIDS 22.50-34.00.

LAMBS: GOOD AND CHOICE 40-110 LBS. 72.00-100.00.

SHEEP: ALL WEIGHTS 25.00-39.00. SALE EVERY TUES. 5 P.M. FOR RABBITS, POULTRY AND EGGS. 6:30 P.M. FOR LIVESTOCK, STARTING WITH CALVES.

SPECIAL FED CATTLE SALES TUES., AUG. 17. THIS TUES. WE WILL HAVE 8 HOLSTEIN STEERS 500-800 LBS. AND 4 HOLSTEIN STEERS 350 LBS.

STATE GRADED FEEDER PIG SALE FRI., AUG. 13 AND 27.

SPECIAL FEEDER CATTLE SALES TUES., AUG. 17.

PEN LOTS OF CATTLE SOLD IN ORDER RECEIVED.

EARLYBIRD PENS CLOSE TUES. 2 P.M.

**Friend's Stockyard Inc.**

Accident, Md. 21520

Report Supplied by Auction  
Mon., Aug. 9, 1999

STOCK BULLS AND STEERS (200-500 LBS.) 50.00-90.00.

STOCK HEIFERS: 36.00-75.00.

SLAUGHTER STEERS: GOOD TO CHOICE 61.00-68.00; MEDIUM TO GOOD 50.00-60.00, HEAVY CHOICE OVER 1450 LB. 50.00-58.00.

HOLSTEIN STEERS: HEAVY CHOICE 40.00-52.00, LIGHT 35.00-46.50.

SLAUGHTER HEIFERS: GOOD TO CHOICE 60.00-64.00; MEDIUM TO GOOD 45.00-62.00.

BULLS: HEAVY 41.00-50.00, LIGHT 38.00-54.00.

COWS: UTILITY (HOLSTEIN) 36.00-41.00, COMMERCIAL TO GOOD 28.00-35.50, CULL COWS 28.00 AND DOWN.

VEALS: GOOD TO CHOICE 50.00-80.00, MEDIUM TO GOOD 20.00-47.00.

BOB CALVES: 30.00 AND DOWN. HOLSTEIN BULL CALVES - RETURN TO FARM (90 TO 120 LB.)-UP TO 120.00.

HOLSTEIN HEIFER CALVES - RETURN TO FARM (90 TO 120 LB.)-UP TO 200.00.

BEEF CROSS CALVES - RETURN TO FARM UP TO 98.00.

**Gypsum Agri-cycle Inc.**

A New Gypsum Supply Company:  
- Quality fertilizer, Calcium 23%, Sulfur 17.7%, and low amount of Boron & Magnesium.  
- Quality additive for composting, manure treatment, & no-till soil management.

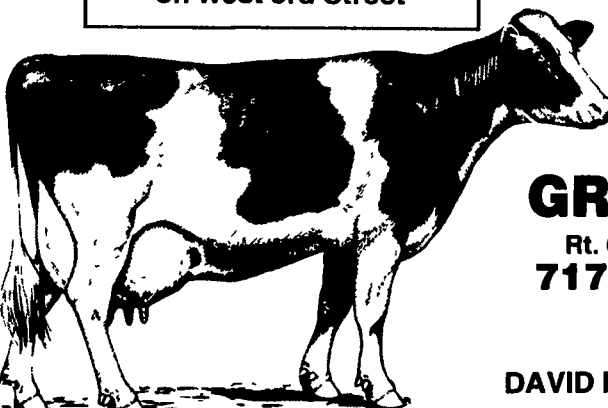
A New Paper Bale Company:  
- 50 lb. bales for easy handling.  
- Heavier paper and more absorbative than newspaper and comes shredded  
For deliveries and pricing...call

**717-394-8901**

**Feed those grains for big savings.  
We will roast on your farm.**

See Us At  
**Ag Progress Days**  
on West 3rd Street

Those roasted grains are really tasty



**SCHNUPP'S GRAIN ROASTING**

Rt. 6 - Box 840, Lebanon, PA 17046  
**717-865-6611** Fax #865-7334  
**800-452-4004**  
- or -  
DAVID N. GROFF, RD #3 Lewisburg, PA  
**717-568-1420**