

N.E. Weekly Shell Egg Report

August 3, 1999

Report Supplied by USDA

PRICES PAID PER DOZEN GRADE "A" BROWN EGGS IN CARTONS DELIVERED STORE DOOR:

	EX. LARGE	LARGE	MEDIUM	SMALL
MAINE	1.31	1.19	.74	.49
NEW HAMPSHIRE	1.23-1.27	1.11-1.15	.67-.71	.42-.46
MOSTLY	1.25-1.26	1.13-1.14	.69-.70	.44-.45
RHODE ISLAND	1.25-1.29	1.13-1.17	.70-.74	.45-.49
MOSTLY	1.25	1.13	.70	.45
VERMONT	1.31-1.34	1.20-1.22	.75-.77	.45
MOSTLY	1.34	1.22	.77	

North Atlantic Shell Eggs

August 5, 1999
Atlanta, Ga.

Report Supplied By USDA

IN PHILADELPHIA, PRICES DECLINED 4 CENTS ON ALL SIZES. IN BOSTON, EXTRA LARGE EGGS WERE UNCHANGED TO 3 CENTS LOWER, AND THE LARGE AND MEDIUM SIZES WERE UNCHANGED TO 2 CENTS LOWER. PRICES PAID TO PRODUCERS IN NEW ENGLAND DECREASED 4 CENTS ON THE EXTRA LARGE THROUGH MEDIUM SIZES, SMALLS WERE 2 CENTS LOWER, AND JUMBOS WERE UNCHANGED. THE MARKET TONE REMAINED WEAK. DEMAND WAS GENERALLY FAIR, USUALLY BETTER FOR THE OCCASIONAL FEATURE INTEREST. SUPPLIES OF JUMBO EGGS WERE CLOSE, BUT THE EXTRA LARGE AND SMALLER SIZES WERE ADEQUATE TO AMPLE WITH THE MEDIUM EGGS IN THE LONGEST POSITION. BREAKING STOCK SUPPLIES WERE FULLY ADEQUATE FOR THE LIGHT DEMAND. LIGHT TYPE HENS WERE ADEQUATE TO AMPLE FOR CURRENT SLAUGHTER SCHEDULES.

PHILADELPHIA: PRICES TO RETAILERS, SALES TO VOLUME BUYERS, USDA GRADE A AND GRADE A WHITE EGGS IN CARTONS, DELIVERED STORE DOOR, CENTS PER DOZEN: EXTRA LARGE 70-85, LARGE 68-83, MEDIUM 34-46.

BOSTON: PRICES TO RETAILERS, SALES TO VOLUME BUYERS, USDA GRADE A AND GRADE A, BROWN EGGS IN CARTONS, DELIVERED STORE DOOR, CENTS PER DOZEN. EXTRA LARGE 108-119, LARGE 97-107, MEDIUM 54-62.

NEW ENGLAND: PRICES PAID TO PRODUCERS, CASES EXCHANGED, GRADE YIELD BASIS, BROWN EGGS LOOSE, AT FARM, CENTS PER DOZEN. JUMBO 127-130, EXTRA LARGE .85-88, LARGE 74-77, MEDIUM 31-34, SMALL 8-11.

Heinsey's Poultry

Roots, East Petersburg
Tuesday, August 3, 1999

Report Supplied By Auction

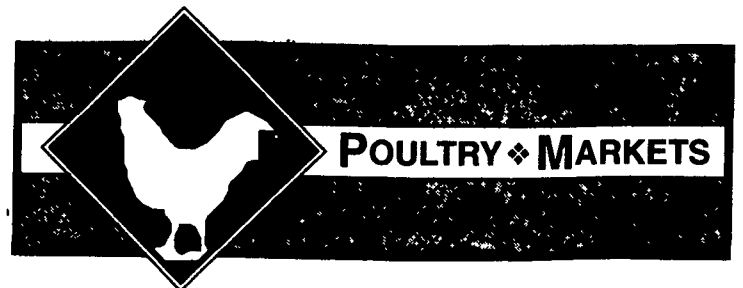
Muscovy duck drakes 1.02-1.30; hens 1.10-1.28.
Peking ducks .50-.64.
Red fowl 4-4 1/2 .50-.74, 5-6 .60-.94.
Crossbred fowl 5-9 lbs. .40-.86.
Crossbred roosters 4-6 lbs. .50-1.04, 7-11 lbs. .40-1.00.
Guinea fowl .45-2.10.
Bantam roosters 2.50-5.75 ea., hens 2.00-3.75.
Leghorn hens .18-.36.
Leghorn rooster .07-.22.
Silkies 2.25-3.00.
Geese, 9-14 lbs., not enough.
Pigeons 1.75-2.20 ea.
White pigeons 2.25-3.75 ea.
Rabbits 4-6 lbs. .60-1.04, 7-11 lbs. .50-.94.
Bunnies 1.00-5.50 ea.
Guinea pigs 4.00-6.50 ea.
Goats, 30.00-49.00.
Kids 15.00-30.00 ea.
Doves 3.50-6.00.
Chukars, not enough.
Pullets .60-1.10.
Total coops 652.

Morrison's Cove Livestock, Poultry & Rabbit Report

Martinsburg, Pa.
August 2, 1999

Report Supplied by Auction

ROOSTERS: 1.50-6.10.
HEAVY HENS 1.50.
BANTAMS .25-2.00.
PIGEONS 2.00-4.00.
DUCKS 2.10-4.25.
MUSCOVY DRAKES 6.00.
BUNNIES .50-2.00.
RABBITS: 4.00-6.00.
GOLDEN PHEASANT CHICK 5.25.
PARAKEETS 4.00-6.50.
COCKATEILS 10.50.
WHITE DOVES 3.00-4.00.
AUCTION EVERY MON. 7:30 P.M.



POULTRY ♦ MARKETS

Weekly New York Egg Market Northeast Quotes Prices Supplied By Urner-Barry

From July 30-August 5

	FRI	MON.	TUES.	WED.	THURS.
WHITE					
JUMBO	1.05	1.05	1.05	1.05	1.05
EX. LARGE	.93	.91	.87	.85	.81
LARGE	.87	.85	.81	.78	.74
MEDIUM	.51	.51	.47	.44	.40
PULLETS	.41	.41	.37	.34	.31
BROWN					
EXTRA LARGE	.90	.90	.90	.87	.87
LARGE	.85	.85	.85	.82	.82
MEDIUM	.51	.51	.51	.48	.48
UNDERGRADES AND CHECKS	.27	.26	.23	.21	.20

BREAKING STOCKS: FRI 42-44 LBS. .29-.31, 48-50 LBS. .41-.43, 50 LBS. AND UP .43-.44; MON. 48-50 LBS. .40-.42, 50 LBS. AND UP .42-.43; TUES. 42-44 LBS. .26-.28, 48-50 LBS. .37-.39, 50 LBS. AND UP .39-.40; WED. 42-44 LBS. .24-.26, 48-50 LBS. .35-.37, 50 LBS. AND UP .37-.38; THURS. 42-44 LBS. .22-.24, 48-50 LBS. .34-.36, 50 LBS. AND UP .36-37.

New York Egg Market ATLANTA, GA. AUGUST 03, 1999

NEW YORK EGGS, AUGUST 03, 1999. FEDERAL-STATE

Prices declined four cents on all sizes. The market tone was weak. Demand ranged fair to good, mostly fair, and was better where specials were in progress. Supplies were readily available for extra

large through medium. The New York State shell egg inventory decreased by 18 percent and the New Jersey inventory was 15 percent more than a week ago.

PRICES TO RETAILERS, SALES TO VOLUME BUYERS, USDA GRADE A AND GRADE A, WHITE EGGS IN CARTONS, DELIVERED STORE DOOR, CENTS PER DOZEN.

RANGE EXTRA LARGE 79-81 LARGE 76-79 MEDIUM 42-45

LANCASTER FARMING .. STAFF ..

Everett R. Newswanger, Editor

Lou Ann Good, Staff

Andy Andrews, Staff

Vernon Achenbach Jr., Staff

Ephrata Office Phone
(717) 626-1164

NEWS CORRESPONDENTS

Joyce Bupp, York County
Seven Valleys (717) 428-1865

Carolyn Moyer, Bradford County
Tioga & Susquehanna
Roaring Branch (570) 324-2482

Randy Wells, Indiana
Marion Center (412) 397-2529

Judith Patton, Union
Mifflinburg (717) 966-4770

Gall Strock, Mifflin
Huntingdon & Juniata
Belleville (717) 935-5675

Linda Williams, Bedford & Blair
Bedford (814) 623-5745

Gay Brownlee, Somerset
Salisbury (814) 662-2127

David Hiebert, Westmoreland
Scottsdale (412) 887-5929

Sandy Bradley,
Mercer & Crawford
Grove City (814) 786-7275

Virginia Wilt, Adams
Wrightsville (717) 252-2038

Karen Butler, Maryland
Mt Airy (301) 829-0909

SUBSCRIPTION INFORMATION

Subscription Price:

\$31.00 per year; \$59.00- 2 years

\$41.00 per year outside of.

PA, NJ, MD, DE, NY, OH, VA & WV

\$79.00 - 2 Years

Non-Refundable

Lancaster Farming (ISSN 0023-7485) is published weekly for \$31.00 per year, \$59.00 - 2 years by Lancaster Farming, P.O. Box 609 1 E Main Street, Ephrata, PA 17522 Periodicals postage paid at Ephrata, PA 17522 POSTMASTER Send address changes to LANCASTER FARMING, 1 East Main Street, P.O. Box 609, Ephrata, PA 17522

Telephone Lititz (717) 626-1164
Ephrata (717) 733-6397
Lancaster (717) 394-3047

FAX 717-733-6058

Circulation (717) 721-4412

(717) 721-4411

For address change form or new subscription see near Mailbox Markets.

Members of National Association of Agricultural Journalists Pa Newspaper Publishers Association, and National Newspaper Association. National Advertising Representative J.L. Farmakis, Inc. Phone (203) 966-1746

PUBLISHER'S LIABILITY FOR ERROR

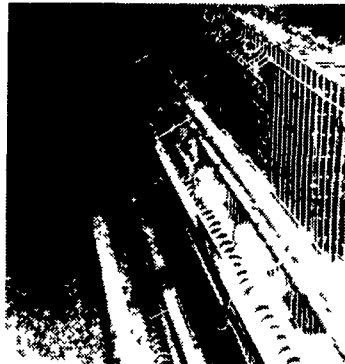
Lancaster Farming is protected by federal copyright statute. No part of this newspaper may be broadcast, reproduced or republished in any form or by any means without the prior, written permission of our General Manager. The advertiser agrees that Lancaster County Weeklies, Inc shall not be liable by reason of any error, omission and/or failure to insert an ad, or any part of an ad, beyond liability for the value of actual space occupied by the ad or item in which the error, omission and/or failure to insert occurred. Lancaster County Weeklies, Inc reserves the right to reject or cancel any advertisement at any time.

Needed by local egg production companies: Career farmers and family farms to build and manage egg layer houses or pullet houses



New Layer featuring Chore-Time Cages, Ultraflo® feeding and Chore-Time Turbo ventilation.

New Pullet house featuring Chore-Time cages with Ultraflo® feeder installed outside cage to save birds and reduce labor.



Excellent opportunity to provide income on Dairy, Swine and Crop farms.

Utilize the latest Advanced Farming Technology from Chore-Time Cage Systems.

- To simplify management
- Reduce Labor and
- Maximize Production

Authorized Master Distributor Since 1982

Northeast Agri Systems Inc
Flyway Business Park
139A West Airport Road
Lititz, PA 17543
Ph (717) 569 2702
1-800-673-2580

G&G Pressure Washing

Agricultural Pressure Washing

- Layer Houses
- Pullet Houses
- Largest Equipment In The Industry
- Ventilation Pipes Cleaned
- Quality Work At A Reasonable Rate

Hog Barns
Dairy Barns

Includes: Skid Loader Squeegee Service

Ventilation Pipes should be cleaned every two years to maintain efficiently

Barry L. Garber
Phone 717-367-3649
Pager 717-305-4123

WANTED

BROWN SPENT FOWL

- Highest wholesale prices paid
- Loading crew available
- All equipment clean and disinfected

RISSER'S POULTRY INC.
P.O. BOX 52 • LITITZ, PA
Tel. 717-626-5466

Layer Management Services

- Feed Formulation
- Flock Service Visits
- Quality Assurance Programs
- Risk Management Programs
- Agreement Supervision
- Accounting Services
- Flock Computer Records

Egg and Fowl Marketing
Joint Ownership Flocks
Financial and Performance Analysis

PMS Inc.
Heritage

2043 Horseshoe Pike • Annville, PA 17003
(717) 867-8366

LEBANON VALLEY LIVESTOCK MARKET, INC.

1 mile East of Fredericksburg along Rt. 22

Cattle Sale Every Tues. & Fri. at 1:30 P.M.

2nd & 4th Tues. Special Fed Cattle Sale

Horse Sale Every Second Sat. of Each Month

Dave Brubaker
(717) 865-2881

FREE COMMODITY MARKET NEWSLETTER

Whether your trade interests are grains or gold, Lehigh Valley Futures, Inc. has the knowledge and expertise to assist you in these markets. For a copy of our newsletter and/or a free trading kit, please contact:

Lehigh Valley Futures, Inc.

5000 Tilghman Street Suite 249
Allentown, PA 18104
1-800-543-8939 or 1-610-366-7979 Fax 1-610-366-9842
lvfuture@microserve.net

The risk of loss in trading futures and options on futures can be substantial. Futures and options trading may not be suitable for everyone. You should carefully consider the risks in light of your financial condition in deciding whether to trade.