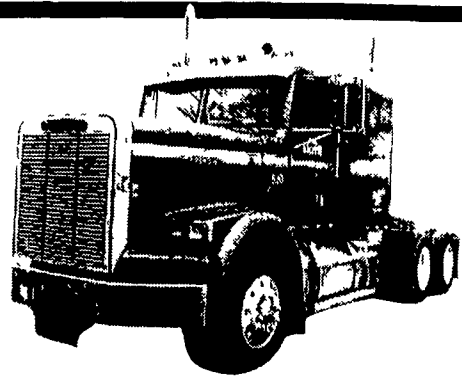


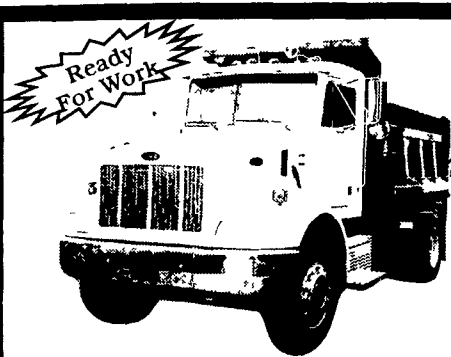
HUNTER KEYSTONE PETERBILT LP



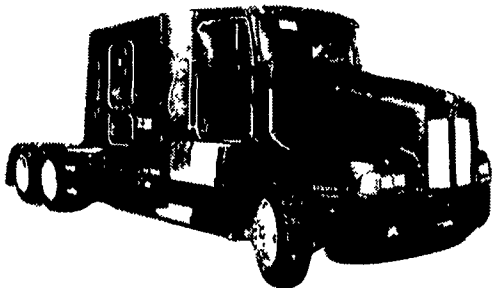
1467 Manheim Pike • Lancaster, PA 17604
717 299-6630 • 800 243-2458



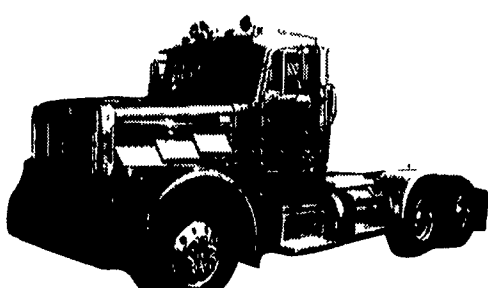
1988 Freightliner, Cummins 350 Eng, 9 Speed, 3.55 Ratio, 200" Wheel Base, 12,000# & 14,000# Axles, 36" Sleeper, Blue



NEW Peterbilt 330, 10' Dumps, Cat & Cumm Power, 9 Spd, 33,000 GVW, Locking Rear, Air Ride 10 23 Axles



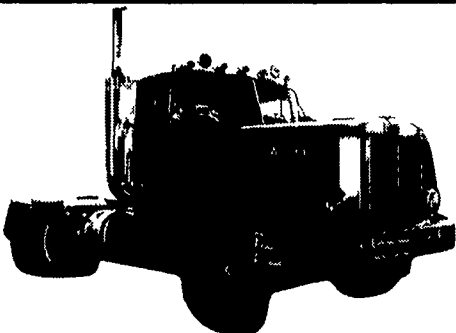
1994 Kenworth T600, 60" Sleeper Series 60, 430 HP Fuller 9 Speed, 3.90 Ratio, 235"WB, 11x24.5 Tires, Dual 135 Fuel Tanks



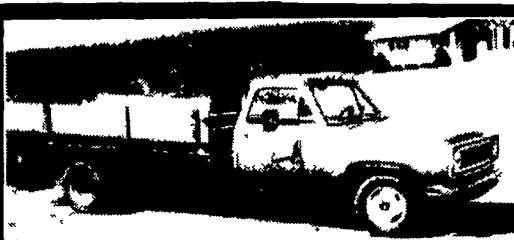
95 & 96 Peterbilt 379s, 350 Cat Eng., 10 Speed, 1 w/Wet Line, Jake Brake, Locking Rears, Light Weight



1980 Mack R Model, 300 HP, Engine Brake, 6 Spd., 44k Rears, Camel Back Susp., 14' Alum Bed



1980 Auto Car Cummins, 300 HP, 9 Spd., 12/38 Axles, Nice Clean Truck



75 DODGE TRUCK
12 Ft. Bed, New Factory Rebuilt Engine, Less Than 5,000 Miles, Garage Kept, No Rust, Inspected '99, Tags, A-1 Condition, Must See!
570/682-3408

35 TRUCKS & TRAILERS

1977 Int. Transtar, tri-axle, 350 Cummins, 13 Spd., w/1971 certified 5100 gal milk tank
1981 Int tri-axle 300 Cummins, 9LL trans, w/1971 Heil 5200 gal milk tank
717-653-8711



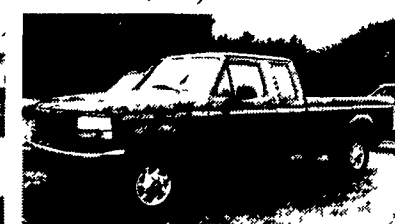
95 CHEV. 2500 EXT. CAB
Cheyenne, 4x2 350 FI Eng AT, A/C AM-FM Cass Cruise, Tilt, 8600 GVW Teal Green, 60,000 Mi
\$15,900



95 CHEV. 3500 CREW CAB DUALY
4WD Cheyenne 6.5 Turbo Diesel 5 Sp A/C AM/FM, 9 ft Flatbed Aluminum 5th Wheel Hookup, 10,000 GVW, 4 10 Rear, 86,000 Mi White
\$18,500



97 FORD F250 XLT SUPER CAB
4WD, 351, AT A/C AM/FM Cass, PW PL Cruise Tilt 8 800 GVW 44,000 Mi, Dark Green
\$21,900



97 FORD F250 XL SUPER CAB
4WD 351 AT A/C AM/FM Cass 8 800 GVW PA 1 Owner 37 000 Mi Red
\$20,900

MARTIN'S AUTO SALES

1025 W. Main St. New Holland, PA 17557
(717) 656-6621



97 FORD F350 4X4 CONTRACTOR DUMP Power Stroke Diesel, 5 Speed, A/C, Only 10,000 Miles, Blue F858



98 CHEV 3500 CREW CAB DUALY 4X4 6.5 Turbo Diesel, 5 Spd A/C, C. T, AM/FM Cass, 33,000 Miles, White, #C522



98 DODGE RAM 3500 4X4 QUAD CAB DUALY SPORT Cummins Turbo Diesel, 5 Spd, 4:10 Rear, A/C, Most Options, 20,000 Miles, Red, #D281



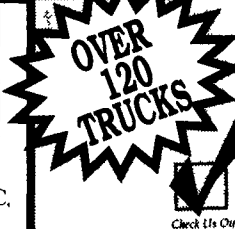
97 DODGE RAM 2500 CLUB CAB 4X4 Cummins Turbo Diesel, 5 Spd, 4:10 Rear, A/C, Most Options, CD Player, Only 28,000 Miles, Green #D277



95 CHEV K3500 DUALY 10 FT. DUMP 4x4, 5 Spd., 350 V8, AC, AM/FM, Boss P A Plow, 51,000 Miles, Blue, #C525



97 FORD F250 QUAD CAB 4X4 XL Trm, 4.6 V8, AT, A/C, C. T, Silver, only 17,000 Miles #F859



95 DODGE RAM 2500 4X4 5.9 Cummins Diesel, AT, PS, PB, A/C, SLT Pkg., 42,000 Mi., Blue & Driftwood, w/Complete Western Plow, #D283



96 FORD F350 4X4 10 FT. CONTRACTOR DUMP AT, Power Stroke Diesel, A/C, AM/FM Cass, 22,000 Miles #F854



90 GMC 3500 CREW CAB DUALY 350 V8, AT, A/C, 64,000 Miles, Charcoal Grey #G205



93 DODGE RAM 3500 CREW CAB CONVERSION DUALY 5-Spd, Cummins Turbo Diesel, A/C, Most Options, 89 000 Miles White #D278



88 FORD F250 HD, 4X4 7.3 Diesel, XLT, 5-spd, A/C PW, PL, C T 126,000 Miles, Grey/Silver #F840



96 DODGE RAM 1500 EXTRA CAB 4X4 318 AT, PS, PB, A/C, 41,000 Mi., SLT Pkg., Blue & Silver



96 FORD F250 SUPERCAB 4X4 XLT Power Stroke Diesel, 5 Spd., A/C, Most Options, Short Bed, Alloy Wheels, 32,000 Miles, Green, #F865



94 CHEV. 3500 CREW CAB DUALY 2WD AT, A/C, 454 EFI, Cass., Sport Stripe White 89,000 Miles, Extra Clean #C515



89 FORD F350 CREW CAB DUALY 460 EFI, AT, A/C, XLT, Most Options, 2-Tone Black & Silver, 83,000 Miles #F843



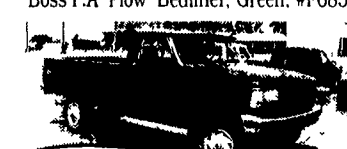
90 CHEV 1500 4X4 350 EFI, AT, A/C, Silverado Pkg, PW, PL, C, T, Fiberglass Cap, 2-Tone Brown/Gold, 103,000 Miles



97 FORD F250 SUPERCAB 4X4 XLT Power Stroke Diesel, AT, A/C, Most Options, Alloy Wheels, Green & White, 24,000 Miles, #F864



95 FORD F250 4X4 Powerstroke Diesel, 5 Spd., XL Trm, AM/FM, Dual Tanks 8,600 GVW, 38,000 Miles, Boss P.A Plow Bedliner, Green, #F865



97 FORD F350 4X4 Power Stroke Diesel AT A/C XL Trm 44 000 Miles Dk Green, #F861



89 FORD F350 CREW CAB DUALY 7.3 Diesel, AT, A/C, XLT, Most Options, Only 54,000 Miles, Blue, Very Good Cond. #F851



92 GMC 3500 CONTRACTOR DUMP 350 V8 AT PS PB AM/FM Only 27,000 Miles, White



96 FORD F250 CREW CAB DUALY Shortbed 4x4 Centuron Conversion Power Stroke Diesel 5 Spd A/C C T PW PB XLT Trm 30 000 Miles #F842



97 CHEV K3500 CREW CAB DUALY 4x4, 6.5 Turbo Diesel, AT, A/C, Silverado, Most Options, CD Player, Gooseneck Hitch, 53 000 Miles Med Blue #C504



93 FORD F250 4X4 351 V8, AT, A/C, C. T, 8,600 GVW 73,000 Miles Black #F539



92 CHEV K3500 EXT. CAB DUALY 4X4 454 V8, AT, A/C Silverado Pkg Power Angle Plow Only 51 000 Miles Med Blue & Silver #C527



96 CHEVY TAHOE 1500 LS 4X4 6.5 Turbo Diesel, AT, PS, PB, A/C Black w/Maroon Interior, 49,000 Mi., Perfect Condition



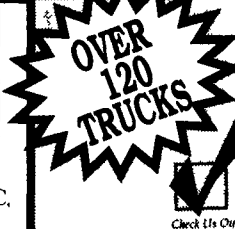
89 FORD F350 4X4 STAKE BODY DUMP Power Angle Plow, 351 V8, 5-Spd., PS, PB, 56,000 Miles, White, #F849

Bobby Gerhart's

Truck World

Mon. - Fri. 9-8, Sat. 9-3

2400
E. Cumberland St.
Rt. 422
Lebanon, PA
17042
717-273-7995



Preferred Warranties Available on Most Trucks

