

# FOR SALE

High Moisture Corn  
Round Bales Grass Hay  
Rolled Corn Silage

## AR-JOY FARMS

Cochranville, PA  
Duane **610-593-5998**  
Tom **610-593-1045**

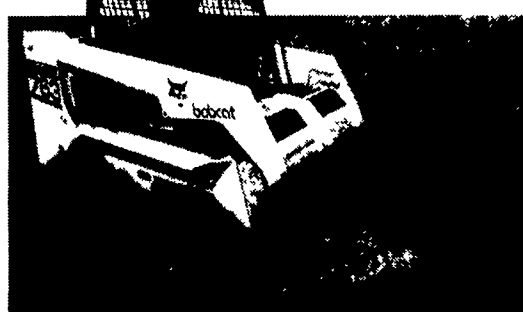
### Attention Combine Owners:

We have parts available for your combine, grain and corn heads. In addition to all of our used combines and head, we also have a large selection of NEW parts at HUGE savings.

- We stock:**
- new and used combine parts
  - rebuilt combine parts
  - after market tractor parts
  - new unload tubes and augers, most makes and models
  - new straw walkers
  - new corn head sheet metal
  - new combine belts most makes and models
  - new hydraulic pumps
  - new combine shafts
  - new sprockets and gears
  - new unload cylinder
  - new cylinder bars
  - Plus many other new parts
- We ship parts daily  
**Bryant Combine Parts**  
US 27 • Bryant, IN 47326  
219-997-6940 FAX 219-997-6881  
**1-800-255-1071**

Hours  
M-F 8 a.m. to 5 p.m.  
Sat 8 a.m. - 12 noon  
Email bryantcom@jayco.net

## 763 Improves Productivity



### MAJOR FEATURES OF 763:

- Long Wheelbase, Smooth Ride
- Powerful 46-hp Diesel Engine
- Additional Lift Height
- 1500-lb. Rated Operating Capacity
- 7 mph Travel Speed

#### SKID STEERS AVAILABLE

- 743 Bobcat
- 753 Bobcat
- 793 Bobcat
- 843 Bobcat, Hi Flow w/Cab Enclosure
- 440 Mustang
- 675 John Deere
- 575 John Deere
- L455 New Holland
- 1825 Case
- 1835 Case

### GRUMELLI FARM SERVICE, INC.

See Salesmen: Quarryville, Pa.  
Don Fichtner  
Tony Grumelli **717-786-7318**



## D. S. SPREADER New Easy Pull Spinner



- Very quiet
- Spreads 15-35 ft.
- 750-1500 Gallon
- Tank 10 ga. Corten Steel
- Bulge Ends for long life, crack free
- Options: rear or front spinner, sight gauge, auger

Also available

#### DRY HILL

Pit Pumps



#### Call About Used Spreaders

Spreader & Pump Rental Available

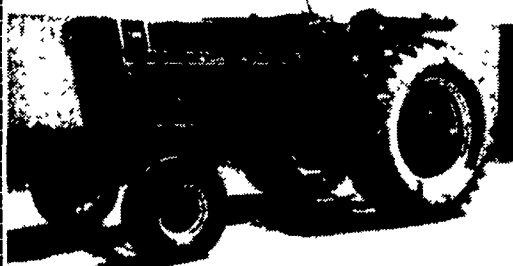
We Do Custom Fabricating

**D.S. Manufacturing**  
834 Pumping Station Rd.,  
Kirkwood, PA 17536  
**717-529-2282** Call 7:45-8:00 AM

5530 Hesston Round Baler  
5312 N.I. 12 Center Pivot Haybine  
Gehl Scavenger Spreader  
Ford 8N  
M.H. Pony Tractor w/Mower  
Krone 4x4 Baler  
Vermeer 504L Baler  
N.H. Hay Rakes  
Chisel Plows

### W.F. WELLIVER EQUIPMENT

Rt. 44, Jerseytown, Bloomsburg, PA  
**570/437-2430**



IH 766, TA, 3 pt., 38 rubber  
**\$6,800**  
**(717) 532-8926**

### NEW FARM TRACTOR TIRES

Large Quantity - Goodyear, Dyna Torque or Traction Torque (not bloms)

- 16.9x28.....\$150
- 13.6x28.....\$125
- 11.2x28.....\$100
- 1200x24 grader.....\$150
- 1300x24 grader.....\$200
- 900x10 implement...\$35



### PENN-HAZLE EQUIPMENT CO., INC.

Rt. 309, Hazleton, PA 18201  
**570-455-5091** FAX 570-455-1960 Anytime

### FARM EQUIPMENT

Vermeer 3', 4', 5', new and used round balers, wheel rakes, tedders, round bale trailers, slicers, wrappers, and film. Rock pickers, corn pickers, and finish cultivators. C. W. Neiderhiser Sales, 724-423-4076, 800-715-5586.

7-sh. disc chisel, \$2500; Brillion 15' mulcher \$1750. Both nice, both good. Zeisloff Eq. 800/919-3322.

Case 4690 4x4, 225hp, used on our farms past 2 years. Very good original paint, good runner, AC blows cold. Reduced from \$21,500 to \$18,500. Excellent value. Zeisloff Eq. 800/919-3322.

HIGH TORQUE DIESEL STARTERS with 3 yr. warranty for most domestic tractors and select imports. With 6 month no risk money back guarantee. Call Gary D. Sneath at 1-800-622-7892.

717 NH chopper, excel. cond. w/corn & pickup head, \$1500. Gehl self-unloading wagon, \$400. IH blower, \$250. 215-679-0544

Gallon Roller, 2-Wheels, 3-5 Ton, Int Power Shift, Water for Mats, New Paint \$500; Gallion Grader for Parts w/GMC 471 Eng. Gears in Tandem, Tires & Front End Steering. 570-769-6366.

BELTING: We specialize in flat belting, cut to order, baler throwers, self unloading wagons, long table blower belts. Franklin Co. 717-263-0573. NO Sunday calls.

CASE 2670, 4x4 w/duals, 220 hp, no 3 pt., no PTO, \$7,500. 410-833-9091

D15 AC, good condition, \$2,695. Lancaster Co, Evenings, 717-336-1282.

SP field queen harvester w/3R head, running cond. \$3,500. Hesston 7' pickup exc. cond \$2,000. NH #8 forage wagon for parts \$450 Chester Co. 610-273-3916.

JD 4430 quad, exc. rubber, original paint, very nice, just purchased. Zeisloff Eq. 800/919-3322.

JD 444 corn head, low tin, very nice cond, field ready, shed kept. 717-456-7372

Roskamp Roller Mill Grinder Mixer, digital scales, fold up auger, ready to use. No Sunday calls. 717-597-5623

JD 4430 C&A, QR, complete rebuilt on engine 225 hrs, new tires 18.4x38, exc cond. \$17,000. 301-874-3132.

New selection of JD, Gleaner & IH grain heads and corn heads arriving from Illinois. No rocks in that country! Call us for any make or size. Zeisloff Eq. 800/919-3322, Bloomsburg, PA.

Gotta Go! MF 550 diesel, AC, excellent rubber. Come steal if you must. Most any unreasonable offer accepted. Zeisloff Eq. 800/919-3322.

1982 MF 850 hydro, Illinois combine, very nice, good rubber, coming soon & priced below book value. 1st \$11,500 buys machine. Zeisloff Eq. 800/919-3322.

JD 3020 diesel, motor stuck, \$2600; JD 7' offset rotary mower, \$675; Oliver 4X plow mounted, \$275; Int. 55 pull type chisel plow, \$1500; McCormick 101 PTO spreader, \$550. 610/562-4464.

Need used tractor parts? Call Leaman Tractor Parts. Specializing in IH, including TA's & Clutches. 1-800-233-0743

Silage Processor Rolls. Also bearings, frames, sheaves. Horning Mfg. 717-445-9317

Electric screw Joy air compressor, 30hp, 717-859-3073.

AC 7030 good cond, w/or wo frontend ldr \$6,500 w/o ldr. 301-416-2544.

## Best Buys in Used Equipment

### TRACTORS

- CIH MX100 \$28,500
- CIH 7120 \$29,500
- CIH 7210 - MFD, 900 Hrs.
- CIH 7220 \$53,500
- CIH 5240 MFD, Cab
- CIH 5240, 1,800 Hrs.
- CIH 585 w/2250 Loader
- CIH 885
- Case 970 - \$5,500
- Case 995
- Case 1690
- IH 140
- IH 186 Hydro
- IH 966 Hydro
- IH 1066
- AC 7060
- JD 2840 w/Loader
- Ford 9N

### HAY EQUIPMENT

- JD 510 Round Baler
- NI 486 Round Baler
- NH 116 Hay Mower, 16 ft.
- Hesston 1010 Mower
- JD 920 Disc MoCo (nice)
- Vicon 3200 10 ft. Disc Mower (nice)
- JD 1219 Mower Conditioner
- Hesston 1150 12 ft. Mower
- IH 1190 Mower
- NI 290 Mower
- 6 ft., 3 pt. Disc Mower
- 7 ft., 3 pt. Disc Mower
- IH 35 Rake
- JD Bar Rake
- JD 762 Hyd. Drive Rake

### TILLAGE

- CIH 18 ft. Rockflex Disc
- IH 6 B18 Plow
- MF 4 Bottom Plow
- JD 345 3B Auto Reset
- MF 880 5B Auto Reset
- IH 5B Auto Reset
- IH 370 12 ft. Disc
- Krause 18 ft. Disc
- AC 20 ft. Wing Disc
- JD 4 Row Cultivator
- JD 14 ft. Field Cultivator

### MISCELLANEOUS

- Harvest-Tec Platform Feeder
- Balzer Platform Feeder
- 10x62 Grain Auger
- Buffalo 40 ft. Elevator
- 30 ft. Elevators
- White 5100, 6RN Planter
- JD 7000 6R Planter
- JD 8350 Drill - 21x7
- IH 5100 Drill, Press Wheels
- JD KBB 13x7 Drill
- (3) Weaverline 430 Cart
- NI Tandem Axle Spreader
- NI 3626 Spreader
- NI 213 Spreader
- Gehl 315 Spreader
- IH 1050 Grinder/Mixer
- IH 1250 Grinder/Mixer
- Rissler Portable TMR
- Farmmaster TMR
- Woods 7 ft. Rotary Mower
- Woods 6 ft. Rotary Mower
- 3 pt. Bale Shredder - \$500
- JD Axle Duals - 20.8x38
- MF 236 Loader

### HARVESTING EQUIPMENT

- Case IH 8720 Harvester w/2 Heads
- Hesston 7020 Harvester
- NI 868 Forage Harvester
- Gleaner R-62
- Gleaner M Combine, 6RN, 16' Platform
- Gleaner 20 ft. Flex
- MF 850 Combine 6RN Corn Head & 15 Ft. Grain Head
- JD 4420 Combine w/213 Flex (Reduced Price)
- NI 839 Husker
- NI 819 Combine
- Miller Pro Dump Box
- NI 8B Flex
- (2) NI 2-Row Corn Picker
- NI 838 Corn Picker
- NI 774 Corn Head
- Case IH 600 Blower
- Farmhand Grinder Blower
- IH 56 Blower
- NH 40 Blower
- JD Dump Box
- Miller Pro 5100, 18 ft.
- Gehl 980 Wagon
- JD Forage Wagon
- (2) Hesston Forage Wagons (Coming In)
- H&S Forage Wagon (Coming In)

### SKID LOADERS

- Case 1830
- Case 1835C
- Case 1840, 170 Hrs.
- (4) Case 1840
- Case 580B
- IH 2500 Loader



**L.H. Manuritagor**  
Traveling Reel with 1,200'  
1,300'6" Aluminum Pipe, 860 Gal. Per Minute, P.T.O. Pump, Used Very Little, In Excellent Condition - \$19,500 OBO  
**Lancaster 717-898-8158**

### Strong Durable Calf Hutches



Constructed of 1/4" Fiberglass and 1/2" Oressure Treated Plywood. Warm for Winter, Shade for Summer. "Calves Love Them". Available with or without Combined Hay & Grain Feeder

**J&L Equipment**  
156 Pompey Hill Rd., Stoystown, PA 15563  
**814-893-5086**

### ZIMMERMAN'S FARM SERVICE

1/2 Mile West Off Rt. 501 On School Rd., Bethel, PA  
**717-933-4114**